

Installation Guide

Model: SL01-A730N

Version: 1.0

English

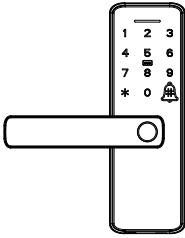
Important Safety Instructions

1. Please read this Installation Guide carefully and contact the Customer Care for any installation queries.
2. It is recommended that installation be carried out by a professional technician to prevent any potential service charges that can occur due to incorrect installation.
3. When the batteries are inserted in reverse positions, it may result in liquid leakage or damage.
4. DO NOT leave all mechanical keys indoors. It is recommended that at least one key be left in a safe place outside the home.
5. DO NOT attempt to disassemble or repair the device without authorization.
6. We regularly revise the contents of this Installation Guide and update our products without prior notice to enhance quality and performance.

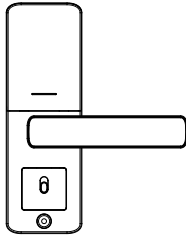
Table of Contents

What's in Box.....	2
Installation Diagram.....	3
Installation Procedure.....	3
1. Check Door Properties.....	3
2. Drill Holes on the Door.....	4
3. Install the Latch.....	5
4. Install the Exterior Assembly.....	5
5. Install the Interior Assembly.....	6
6. Install the Batteries and the Battery Cover.....	6
7. Install the Strike Plate and the Box.....	7
8. Physical Test.....	7

What's in Box



Exterior Assembly



Interior Assembly



Strike Plate and Box



Latch



Latch Screws



Spindle



Mounting Plate Studs



Interior Assembly Screws



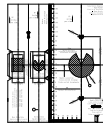
IC Card *2



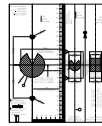
Mechanical Key *2



Silicone Plug



Installation Template



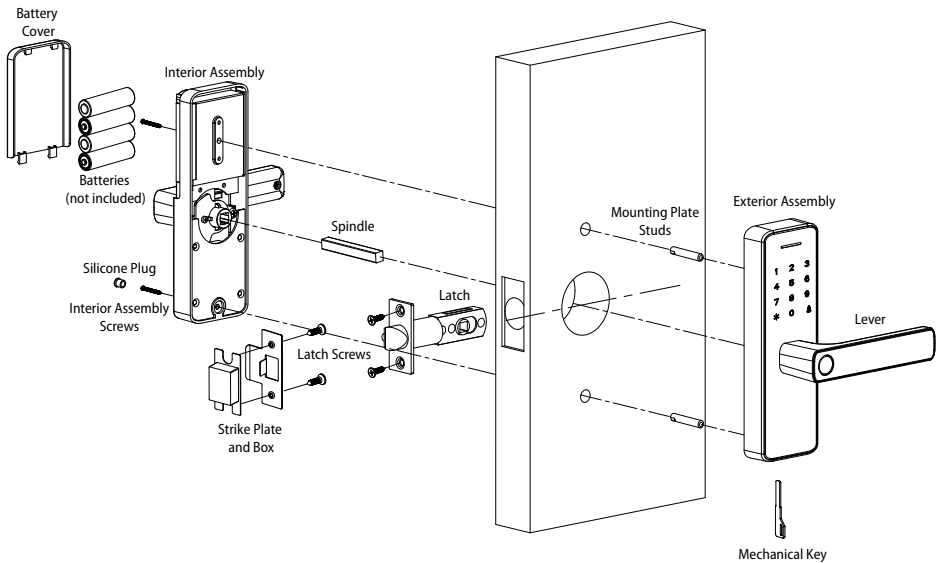
Installation Guide & User Manual



Door Thickness	Spindle	Mounting Plate Studs	Interior Assembly Screws
35 to 50 mm	63mm	35mm	30mm*1 35mm*1
50 to 60 mm			40mm*1 45mm*1

Note: Screws and Studs for the doors of thickness from 35 to 60 mm are included in the standard package. Please use the appropriate set of accessories as per your door's thickness to ensure the lock functions properly.

Installation Diagram



Installation Procedure

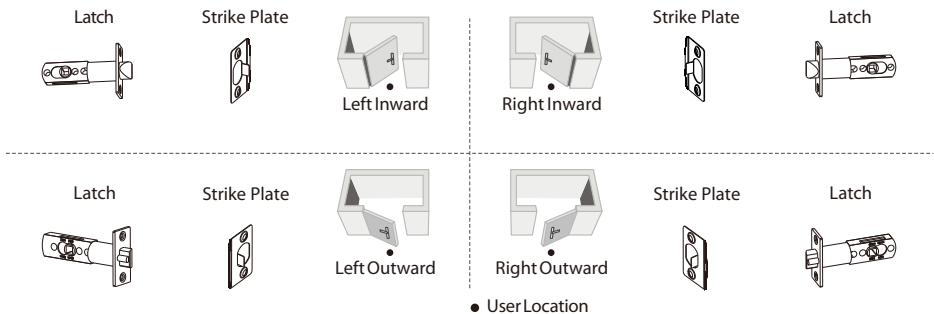
1. Check Door Properties

1.1 Measure the Door Thickness

Measure the door thickness and select the proper length of studs and screws. For details, please refer to the table in Page 2.

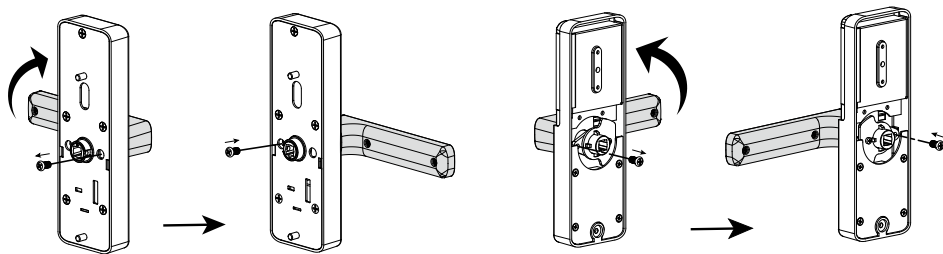
1.2 Check the Door Opening Direction

The position of the handle is determined by the opening direction of the door. Below is the graphical representation of door opening direction in reference to your location outside the room.



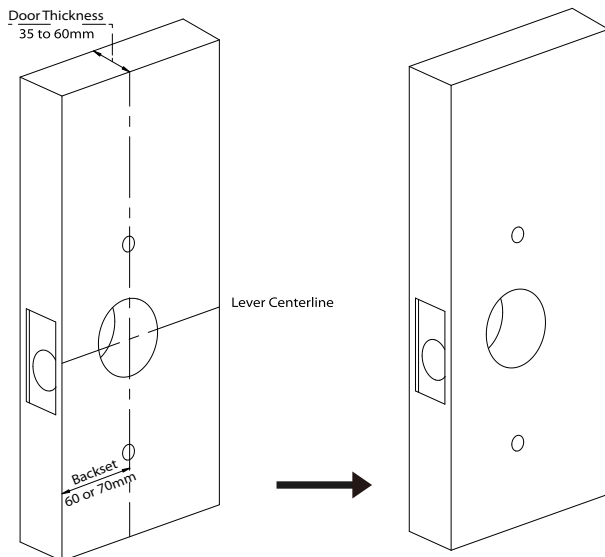
1.3 Change the Lever Direction (if needed)

- 1) Use a screwdriver to remove the screw.
- 2) Rotate the lever 180° to the opposite direction.
- 3) Install and secure the lever with the screws.



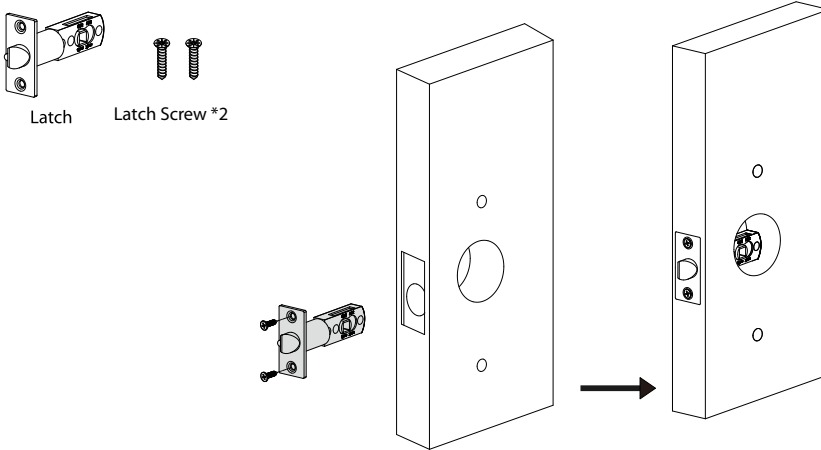
2. Drill Holes on the Door

- 1) Align and tape the Installation Template at the desired lever height.
- 2) Mark for the holes to be drilled and drill the marked places.



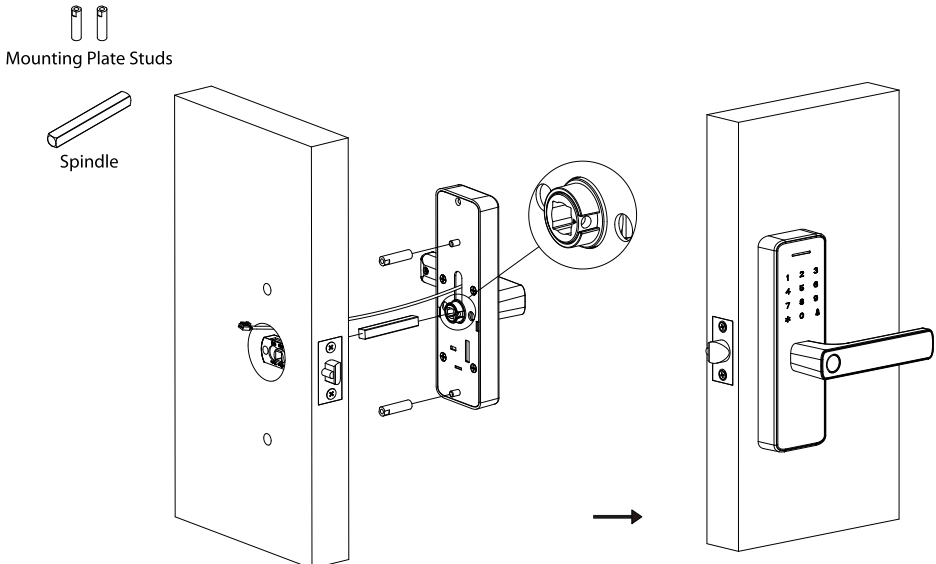
3. Install the Latch

Insert the Latch into the door and secure it with the Latch Screws.



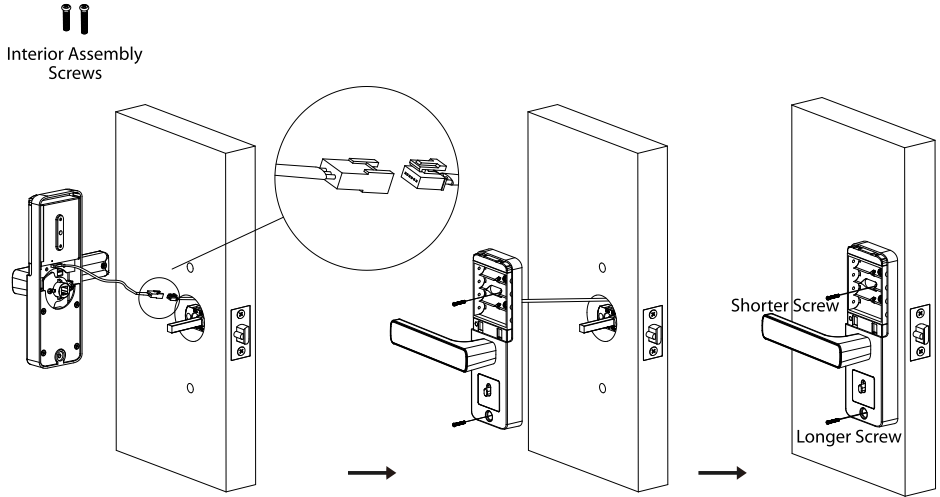
4. Install the Exterior Assembly

- 1) Install and secure the Mounting Plate Studs on the rear of the Exterior Assembly.
- 2) Insert the Spindle into the clutch, and make sure that the **triangle mark is facing the notch**.
- 3) Insert the cable through the hole, and insert the Exterior Assembly into the corresponding holes.



5. Install the Interior Assembly

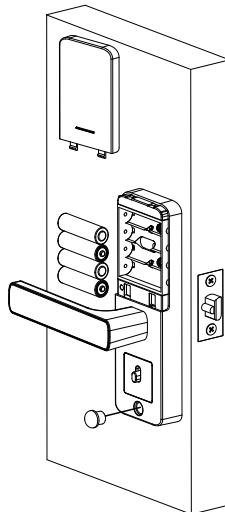
- 1) Connect the cable to the port on the Interior Assembly.
- 2) Remove the battery cover, place the Interior Assembly properly on the door, and secure it with the Interior Assembly Screws.



6. Install the Batteries and the Battery Cover

- 1) Insert four alkaline AA batteries and cover them with a Battery Cover.
- 2) Use the Silicone Plug to cover the screw hole at the bottom of the Interior Assembly.


Silicone
Plug *1



7. Install the Strike Plate and the Box

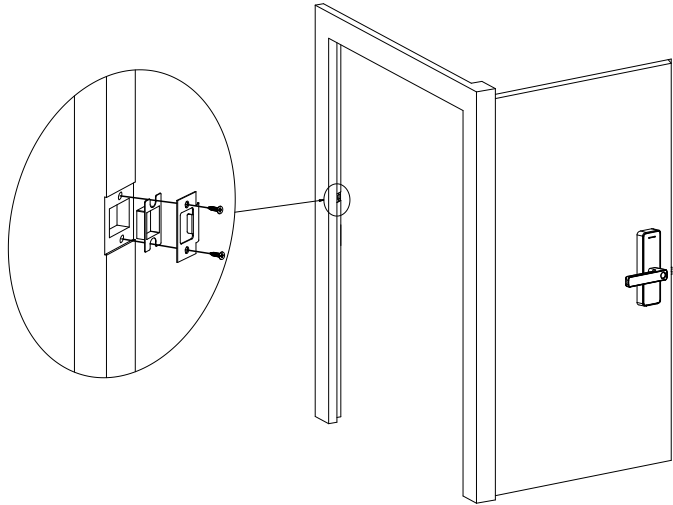
- 1) Make sure that the Strike Box is aligned with the latch bolt. Then, use the Installation Template to drill holes.
- 2) Align the Strike Plate and the Box with the drilled holes and secure them with provided Latch Screws.



Strike Plate
and Box *1



Screw *2



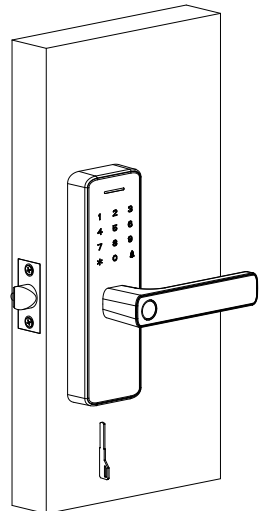
8. Physical Test

8.1 Test Lever and Latch

- 1) Rotate down the exterior lever, and check whether the latch bolt remain locked position.
- 2) Rotate down the interior lever, and check whether the latch bolt remain retracted (unlocked) position.

8.2 Test Mechanical Key

Insert the Mechanical Key into the key hole and rotate 90°, then rotate the lever in downward direction to unlock the door.



User Manual

Model: SL01-A730N

Version: 1.0

English

Important Notes

1. Please carefully read this manual before operating the product.
2. We regularly update this User Manual and our products without prior notice to enhance quality and performance.
3. Before registration, the new locks are initially can be unlocked by any authentication method by default.
4. **Please ensure that the device's Wi-Fi network remains stable, otherwise it will shorten the battery life faster.**
5. **Four Alkaline AA Batteries (not included) are required to power the device. Non-alkaline and rechargeable lithium batteries ARE NOT RECOMMENDED.**
6. Do not remove batteries from the lock while it is operating.
7. Batteries must be replaced immediately when the lock prompts the Low Battery Warning.
8. Do not keep all mechanical keys indoors. It is recommended that at least one key be left in a safe place outside the home.
9. **Fingerprint Collection Tips:**
Please move the different areas of your fingerprint to collect more details, and place your finger to maximize the fingerprint sensor surface, which helps to improve the success rate of fingerprint verification.



Note: Please use the correct method when pressing your fingers onto the fingerprint reader for registration and identification. Our company will assume no liability for recognition issues that may result from incorrect usage of the product. We reserve the right of final interpretation and modification concerning this point.

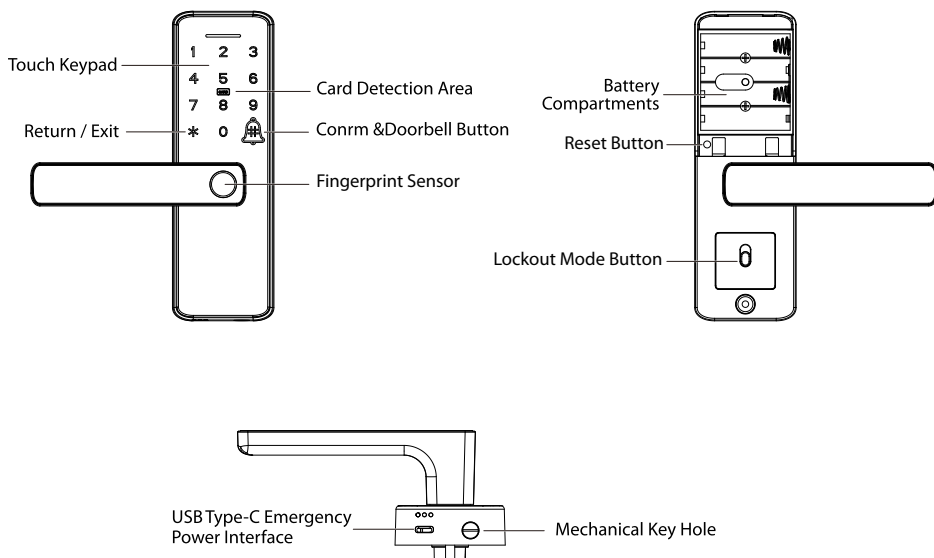
Table of Contents

Product Specifications.....	2
Product Overview.....	2
Product Features.....	3
Lock Setup.....	4

Product Specifications

Capacity	Fingerprint: 100 Passcode: 100 Card: 100
Card Reader	IC Card@13.56 MHz, NFC Supported
Wireless Communication	Wi-Fi (IEEE 802.11b/g/n) @ 2.4 GHz BLE 5.0 (only for network configuration)
Power Supply	4 * AA Alkaline Battery
Emergency Power Supply	USB Type-C Interface, DC 5V
Operating Temperature	-20°C to 55°C (-4°F to 131°F)

Product Overview



Product Features

User Roles: The lock can be handled by two user roles namely Administrator and User. The Administrator has the privilege to access the menu and open the door, and the Administrator cannot be a card. The User has the privilege to only open the door.

Initialization (Reset): All the registered user data will be deleted and the device will be restored to the factory setting.

Anti-Peeping Codes: To protect the passcode, users may enter their passcode with random digits before or after the actual passcode. The passcode can be set 6 digits, and the maximum number of entered digits must be less than or equal to 32.

Doorbell: When the visitor presses the Doorbell Button (# Key) on the touch keypad, the lock will generate a doorbell sound, and the App will send a push notification.

Temporary Access: The temporary passcode can be generated for visitors on the App. Periodic passcodes can be customized with a set schedule.

Passage Mode: This function is designed to keep the door unlocked at all times, which is suitable for places with no access restrictions.

Double Unlock Mode: It requires two different verifications to unlock the lock.

Lockout Mode: When the lockout mode is enabled, only the admin can verify to unlock from outside.

Emergency Charging: If the lock is out of power, a portable power bank can temporarily power it by connecting to the USB Type-C interface.

Emergency Mechanical Key: The mechanical key is utilized to unlock the door in case of an electronic malfunction with the lock.

Consecutive Attempts Alarm: After 5 failed attempts of the same verification method, the device will lock out the verification method for 5 minutes.

Low Battery Alarm: When the battery is low, the lock will prompt "Low power, replace the battery" after being unlock.

Lock Setup

Using the Lock in Standalone Mode

It is recommended to use the **NGTeco Home App** to configure your lock. If you don't have a smartphone or don't want to use the App, you can use the following programming instructions.

1. Register the First Administrator

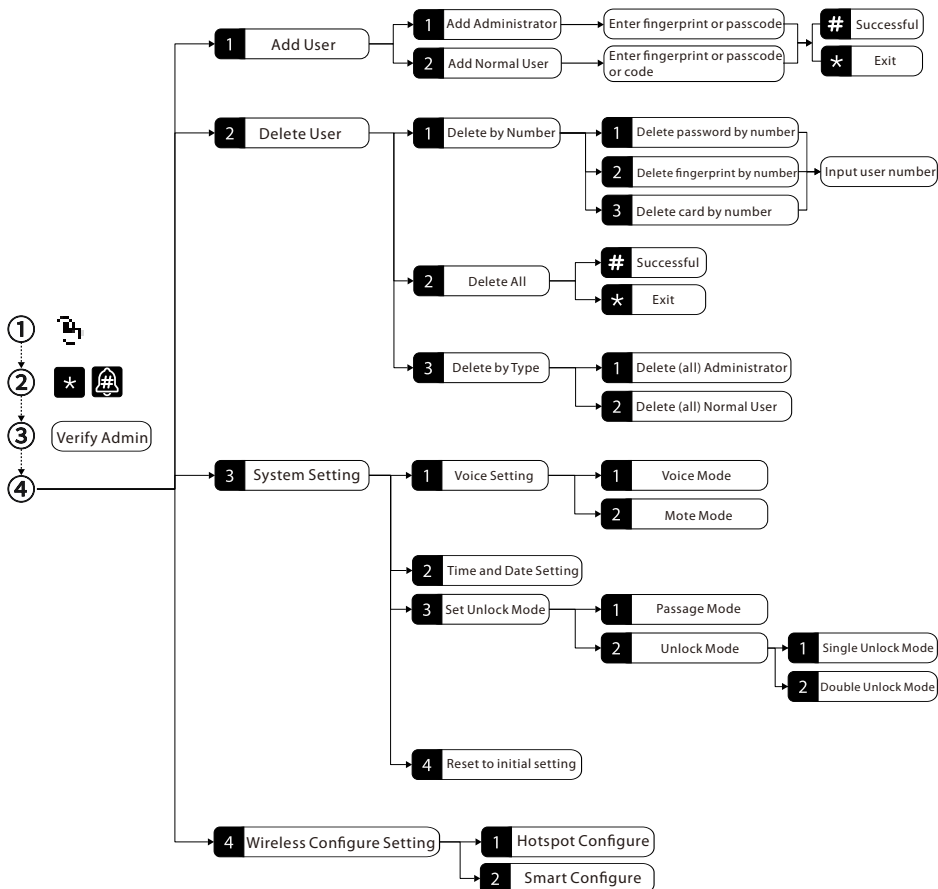
- ① Touch the keypad to activate the lock.
- ② Press the [*] and [#] buttons, and input "123456#" to access the system menu.
- ③ Select "1 Add User > 1 Add Admin".
- ④ Press fingerprint six times, or enter a six-digit passcode twice.

2. Operate Other Features through Menu Mode

- ① Touch the keypad to activate the lock.
- ② Press the [*] and [#] buttons, and verify the administrator's information to access the system menu.
- ③ Follow the audio guide and enter the digit corresponding to the desired function.

Note:

- 1) The default administrator password is "123456".
- 2) After any verification unlocks, the keypad lights up the "5" key. Then press "5" to announce the number of that verification number.
- 3) You can also press and hold the initialization button on the Interior Assembly for 6 seconds to enter the forced initialization mode. After initialization, all user registration information will be cleared.



Connecting the Lock with App

1. Search for the **"NGTeco Home"** App on the iOS App Store or Google Play Store, or scan the QR code to download the App. Open the **"NGTeco Home"** App, register, and sign in to the account.
2. Turn on **Bluetooth and Wi-Fi permission** on your smartphone, and stay near the lock (within 10 meters without obstacles).
3. Tap the "+" button on the top right corner of the interface, and then select the **"Add Device"** option.
4. Activate the lock and enter the system menu, select **"4. Wireless Configure Setting > 2. Smart Connection"**.
5. Tap the **"Add"** button once the device pop-up has appeared on the App. Follow the on-screen instructions to connect the device automatically.



Attachment 1

"Hereby, ZKTECO CO.,LTD declares that this Product is in compliance with the essential requirements and other relevant provisions of Directive 2014/53/EU.

This device complies with Part 15 of the FCC Rules.

Operation is subject to the following two conditions:

- (1) This device may not cause harmful interference, and
- (2) This device must accept any interference received, including interference that may cause undesired operation.

Warning: Changes or modifications to this unit not expressly approved by the party responsible for compliance could void the user's authority to operate the equipment.

Note: This equipment has been tested and found to comply with the limits for a Class B digital device, pursuant to Part 15 of the FCC Rules. These limits are designed to provide reasonable protection against harmful interference in a residential installation. This equipment generates, uses and can radiate radio frequency energy and, if not installed and used in accordance with the instructions, may cause harmful interference to radio communications. However, there is no guarantee that interference will not occur in a particular installation. If this equipment does cause harmful interference to radio or television reception, which can be determined by turning the equipment off and on, the user is encouraged to try to correct the interference by one or more of the following measures:

- Reorient or relocate the receiving antenna.
- Increase the separation between the equipment and receiver.
- Connect the equipment into an outlet on a circuit different from that to which the receiver is connected.
- Consult the dealer or an experienced radio/TV technician for help.

"This equipment complies with FCC RF radiation exposure limits set forth for an uncontrolled environment.

This equipment should be installed and operated with a minimum distance of 20 cm between the radiator and your body.

This transmitter must not be co-located or operating in conjunction with any other antenna or transmitter."

1600 Union Hill Road Alpharetta, GA 30005

E-mail: sale@ngteco.com

www.ngteco.com

