



TH600电容录音麦克风

TH600 CONDENSER RECORDING MICROPHONE

GENERAL DESCRIPTION

TH600 is a D & R condenser recording microphone. The 34mm large diaphragm capsule with cardioids poplar pattern delivers an eloquent and outstanding low frequency sound quality. Its fashion and concise fluting design increases the whole visual effect. What's more, the metal shock mount boosts microphone's metallic and reduce the thrill during recording at the same time.

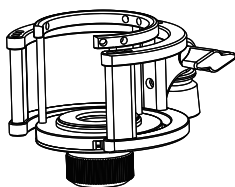
FEATURES

- * Cardioids condenser recording mic;
- * 34mm large diagram capsule;
- * Recording sound more warmth and natural;

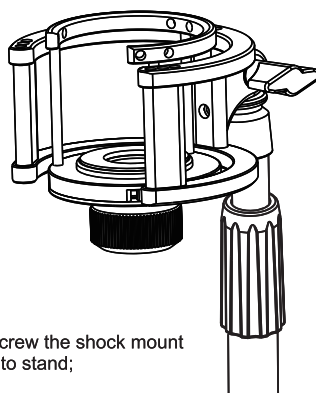
HOW TO USE MICROPHONE



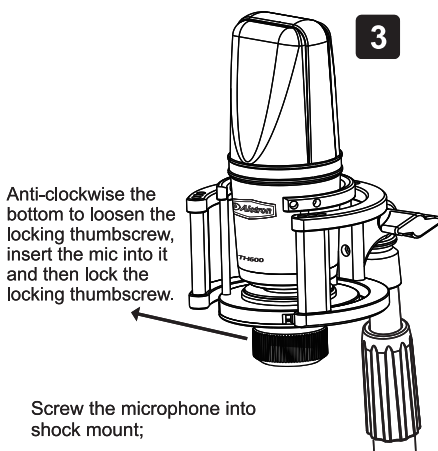
Microphone



Shock Mount

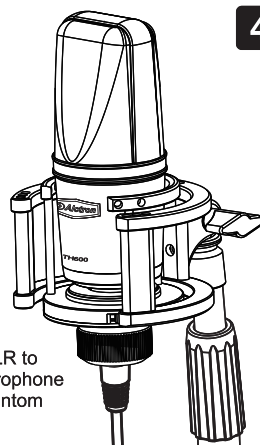


Screw the shock mount into stand;



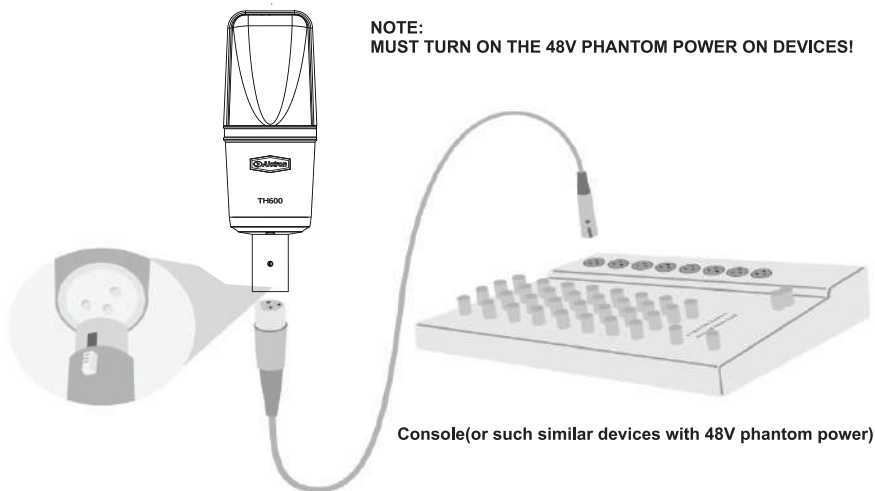
Anti-clockwise the bottom to loosen the locking thumbscrew, insert the mic into it and then lock the locking thumbscrew.

Screw the microphone into shock mount;



Use 3-pin XLR to connect microphone and 48V phantom power.

XLR CONNECTION



PROXIMITY EFFECT

Unidirectional microphones such as the TH600 progressively boost bass frequencies by 6 to 10 dB below 100 Hz when the microphone is at a distance of about 6 mm (1/4 in.) from the sound source.

This phenomenon, known as proximity effect, can be used to create a warmer, more powerful sound.

APPLICATION	SUGGESTED MICROPHONE PLACEMENT	TONE QUALITY
Vocals	Lips less than 15 cm (6 in.) away or touching the windscreen, on axis to microphone.	Robust sound, emphasized bass, maximum isolation from other sources.
	15 to 60 cm (6 in. to 2 ft.) away from mouth, just above nose height.	Natural sound, reduced bass.
	20 to 60 cm (8 in. to 2 ft.) away from mouth, slightly off to one side.	Natural sound, reduced bass and minimal "s" sounds.
	90 cm to 1.8 m (3 to 6 ft.) Away.	Thinner, distant sound; noticeable levels of ambient noise.
Guitar & Bass Amplifiers	2.5 cm (1 in.) from speaker, on-axis with center of speaker cone.	Sharp attack; emphasized bass.
	2.5 cm (1 in.) from speaker, at edge of speaker cone.	Sharp attack; higher frequency sound.
	15 to 30 cm (6 to 12 in.) away from speaker and on-axis with speaker cone.	Medium attack; full, balanced sound.
	60 to 90 cm (2 to 3 ft.) back from speaker, on-axis with speaker cone.	Softer attack; reduced bass.

GENERAL RULES FOR USE

Aim the microphone toward the desired sound source (such as the talker, singer, or instrument) and away from unwanted sources.

Place the microphone as close as practical to the desired sound source.

Work close to the microphone for extra bass response.

Use only one microphone to pick up a single sound source.

Use the fewest number of microphones as practical.

Keep the distance between microphones at least three times the distance from each microphone to its source.

Place microphones as far as possible from reflective surfaces.

Add a windscreen when using the microphone outdoors.

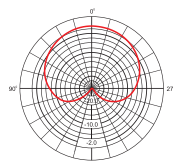
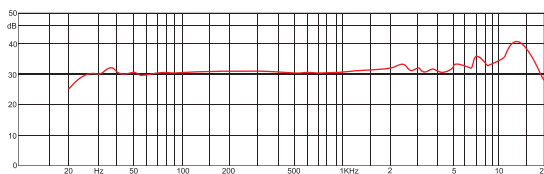
Avoid excessive handling to minimize pickup of mechanical noise and vibration.

Do not cover any part of the microphone grille with your hand, as this will adversely affect microphone performance.

TECHNICAL SPECIFICATIONS

* Capsule:	34mm
* Polar pattern:	cardioids
* Frequency response:	20hz-20khz
* Sensitivity:	-37dB \pm 2dB(0dB=1V/Pa at 1khz)
* Output impedance:	150 Ω \pm 30%(at 1khz)
* Load impedance:	\geq 1000 Ω
* Self-noise:	16dB A
* Max input SPL:	132dB(at 1khz \leq 1% T.H.D)
* S/N Ratio:	78dB
* Phantom power requirement:	48V phantom power

THE FREQUENCY RESPONSE CURVES AND THE POLAR DIAGRAM



Cardioid at 1KHz

* Cardioid—When this pattern is selected, the microphone picks up sounds directly in front of the microphone and is least sensitivity to those in back. This is the most commonly used pattern in studio recording and live-sound applications.

⚠ CAUTION

* Do not store the microphone under direct sunlight, near heating devices or in a hot, humid or dusty place. Do not allow the microphone to get wet;

* Do not install near any heat sources such as radiators, heat registers, stoves, or other apparatus (including amplifiers) that produce heat;

* Do not subject the microphone to strong impact;

* Do not disassemble, modify or attempt to repair the microphone;

* Clean only with dry cloth;

* When this product is used for a long time, the microphone may become discolored due to ultraviolet light (especially direct sunlight) or wear.

Copyright © Ningbo Alctron Electronics Technology CO.,LTD. All rights reserved. Specifications and appearance subject to change without notice.

Ningbo Alctron Electronics Technology CO.,LTD.

No.76 SanCheng Road, XiuFeng Industrial Area,GaoQiao Town, NingBo, China.

Tel:+0086 574 87150672

Fax:+86 574 87157176

E-mail:info@alctron-audio.com

www.alctron-audio.com