



www.jbctools.com

INSTRUCTION MANUAL



CC2002

Cable Collector
for NAS & NAN Stations



This manual corresponds to the following reference:

CC2002

Packing List

The following items are included:



Cable Collector for NAS & NAN Stations 1 unit

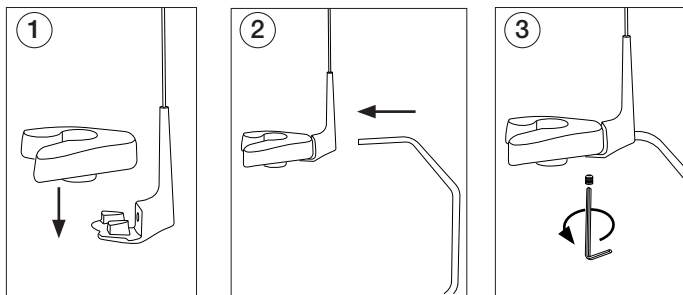


Allen Key 1,5 mm 1 unit
Ref. 0741610



Manual 1 unit
Ref. 0025685

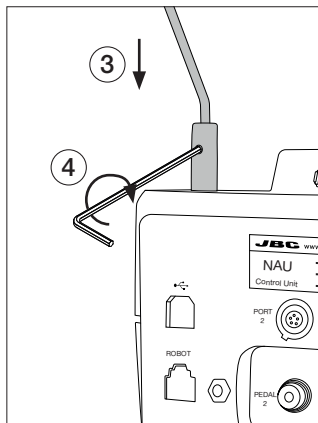
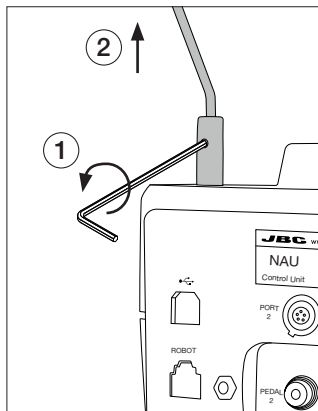
Assembly the Tool Holder



Replacing the Tool Holder

Loosen the screw (1) and withdraw the tool holder (2).

Insert the new tool holder (3) and tighten the screw (4).



Specifications

CC2002

Cable collector for NAS & NAN Stations

Ref.: **CC2002**

- Net Weight: 42 g / 0.09 lb
- Dimensions: 339 x 73 x 35 mm
(L x W x H) 13.35 x 2.87 x 1.38 in
- Package Dimensions / Weight: 235 x 40 x 40 mm / 70 g
(L x W x H) 9.25 x 1.57 x 1.57 in / 0.15 lb

Complies with CE standards.

JBC

Warranty

JBC's 2 year warranty covers this equipment against all manufacturing defects, including the replacement of defective parts and labour.

Warranty does not cover product wear or misuse.

In order for the warranty to be valid, equipment must be returned, postage paid, to the dealer where it was purchased.



This product should not be thrown in the garbage.

In accordance with the European directive 2012/19/EU, electronic equipment at the end of its life must be collected and returned to an authorized recycling facility.



www.jbctools.com