



[www.jbctools.com](http://www.jbctools.com)

## INSTRUCTION MANUAL



### CC2002

Cable Collector  
for NAS & NAN Stations

This manual corresponds to the following reference:

**CC2002**

## Packing List

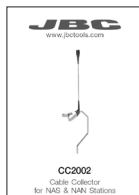
The following items are included:



**Cable Collector for NAS & NAN Stations ..... 1 unit**

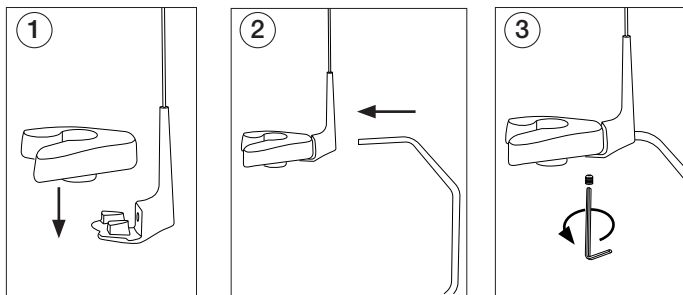


**Allen Key 1,5 mm ..... 1 unit**  
Ref. 0741610



**Manual ..... 1 unit**  
Ref. 0025685

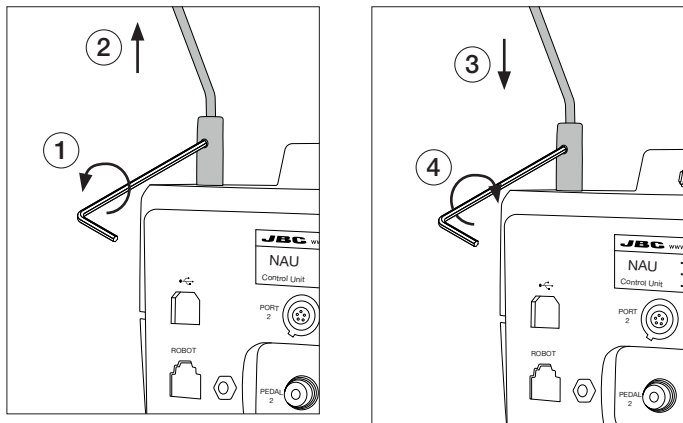
## Assembly the Tool Holder



## Replacing the Tool Holder

Loosen the screw (1) and withdraw the tool holder (2).

Insert the new tool holder (3) and tighten the screw (4).



# Specifications

## **CC2002**

### **Cable collector for NAS & NAN Stations**

Ref.: **CC2002**

- Net Weight: 42 g / 0.09 lb
- Dimensions: 339 x 73 x 35 mm  
(L x W x H) 13.35 x 2.87 x 1.38 in
- Package Dimensions / Weight: 235 x 40 x 40 mm / 70 g  
(L x W x H) 9.25 x 1.57 x 1.57 in / 0.15 lb

Complies with CE standards.

# JBC

## **Warranty**

JBC's 2 year warranty covers this equipment against all manufacturing defects, including the replacement of defective parts and labour.

Warranty does not cover product wear or misuse.

In order for the warranty to be valid, equipment must be returned, postage paid, to the dealer where it was purchased.



This product should not be thrown in the garbage.

In accordance with the European directive 2012/19/EU, electronic equipment at the end of its life must be collected and returned to an authorized recycling facility.



[www.jbctools.com](http://www.jbctools.com)