



DRIVER



MANUAL

[HTTP://WWW.DRAGONWAR.JP](http://www.dragonwar.jp)



SUPER LIGHT



DRAGON  
WAR

8K

2.4G

WIRELESS  
GAMING  
MOUSE

G28

USER MANUAL



3 MODE : Wireless | Wired | Bluetooth



## CONTENTS

PACKAGE CONTENTS / SYSTEM REQUIREMENTS	02
GAMING MOUSE LAYOUT	03
INSTALLING YOUR DRAGONWAR G28 MOUSE	04
CONFIGURING YOUR DRAGONWAR G28 MOUSE	05
ALTERNATE MOUSE BUTTON	06
SENSITIVITY & POLLING RATE OPTIONS	07

## PACKAGE CONTENTS / SYSTEM REQUIREMENTS

### PACKAGE CONTENTS

- Dragonwar G28 8K 2.4G Wireless Gaming Mouse
- User Manual

### SYSTEM REQUIREMENTS

- PC with a free USB 2.0 port
- Windows

## TECHNICAL SUPPORT

- 1 years limited warranty
- Free online technical support at [www.dragonwar.jp](http://www.dragonwar.jp)
- Driver download from : [www.dragonwar.jp](http://www.dragonwar.jp)

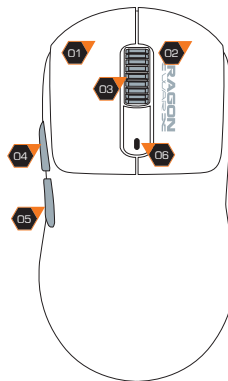
## TECHNICAL SPECIFICATIONS

- Customizable ergonomics to fit all hand sizes
- 26000dpi Optical sensor system
- 8Khz 2.4G Polling Rate Receiver
- USB A to Type-C Cable

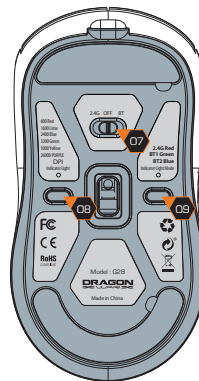
## CHARGING TIME

- Charging Time : 2.5hrs
- Usage Time : 2.4G Mode 8K Polling Rate 18 hrs / 1K Polling Rate 70 hrs

## GAMING MOUSE LAYOUT



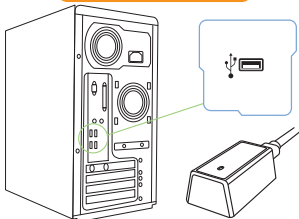
1. Left Mouse Button
2. Right Mouse Button
3. Scroll Up / Down
4. Forward
5. Backward
6. Battery Indicator Light



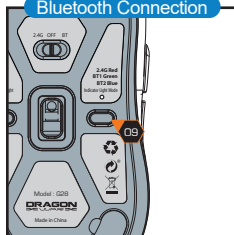
7. Power Off / 2.4G / Bluetooth
8. DPI Switching
9. Connection Mode Switch
  - Short Press The Bluetooth Channel Switch
  - Long Press 3 Seconds Make a pairing

## INSTALLING YOUR DRAGONWAR G28

### 2.4Ghz Connection



### Bluetooth Connection



### 2.4Ghz Connection :

- Step 1: Download and install software from the [www.dragonwar.jp](http://www.dragonwar.jp)
- Step 2: Plug the Dragonwar G28 Receiver into the USB port of your computer.
- Step 3: Run the installer and follow the Programme.
- Step 4: Wait until the software automatically downloads and installs.
- Step 5: Open the programme, then set up

### Bluetooth Connection :

- Step 1: The power switch to the Bluetooth Mode light is blue
- Step 2: Long press "9" key for about 3 seconds, light will flash blue quickly, then please turn on devices to be pairing. Search via Bluetooth when show "G28BT1" or "G28BT2", please connect in time.
- Step 3: Short press "9" key to select the Bluetooth channel.  
G28BT1 Green light flashes ;  
G28BT2 Blue light flashes.

## CONFIGURING YOUR DRAGONWAR G28

### MOUSE TAB

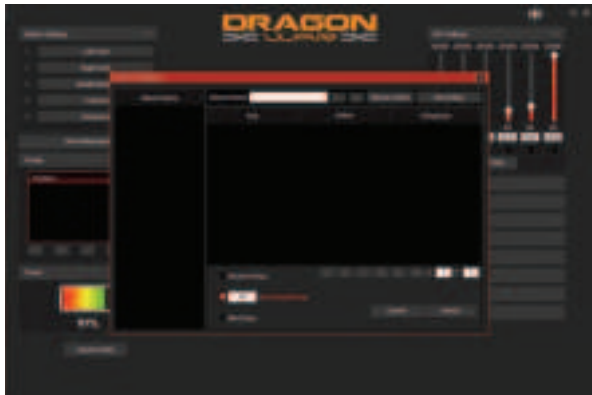
The Mouse Tab is your default tab when you first install Programme. This tab allows you to customize your device's profiles, button assignments.



### ALTERNATE MOUSE BUTTON

Initially, each of the mouse buttons is set to DEFAULT.

You can use Macro management to set your own key combinations



### SENSITIVITY OPTIONS

Sensitivity pertains to how much effort is needed to move the mouse pointer in any direction. The higher the sensitivity, the more responsive the mouse will be.

1. Select the number of sensitivity stage needed.
2. Click on the stage you would like to preset and adjust using the arrow on the slider below.
3. Click "Apply" when done. To switch between different sensitivity stages, simply assign the Sensitivity Stage Up and Sensitivity Stage Down functions to the desired buttons.



### POLLING RATE SETTING

2.4G receiver can use 8K Polling Rate  
Cable can use 1K Polling Rate

