

## 4G Wireless Router Manual

### This book declares that

Thank you for purchasing our 4G wireless router!

This installation guide applies to the 4G wireless router and provides the configuration method and its steps based on the WEB interface. The operating system interfaces mentioned in the manual are based on Windows 7 system as an example.

We reserve the right of final explanation for any changes in product appearance, product specifications, etc. without prior notice.

### Packing List

4G Wireless Router X 1  
Type C USB Cable X 1  
User's manual X 1

### Interface Description

Interfaces	Functional Description
POWER	DC power input connector, connect to 5V/1.5A power adapter
RESET	Press and hold for 3 seconds to release the device to reboot Press and hold for 10 seconds to release the device to restore factory settings
ETH	Rj45 network port, 10/100M adaptive, WAN/LAN adaptive
SIM	SIM card slot, supports Nano SIM card only

### LED Indicator Description

Light	Meanings	Statuses	Functional Description
	WiFi	Ever Bright	WiFi working properly, no device access
		Extinguish	The device didn't power on and turn on or WiFi works abnormally
		Blinking	WiFi has device-side access
	Network Port Indicator	Ever Bright	The network port is working normally and there is terminal access
		Extinguish	No terminal access or abnormal operation of the network port
	4G Indicator	Extinguish	Failure to switch on the computer properly / SIM card not detected after switching on the computer
		Ever Bright	Device data status is normal and dialled
		Speedy flickers	Normal recognition of SIM card on boot, searching the network in the
		Slow flickers	Resident to the network, but not dialling

### Working environment

In order to ensure the normal operation of the equipment, the recommended working environment of the equipment is as follows.

- Keep away from heat sources and maintain ventilation.
- Please place the device on a horizontal tabletop
- Please place the equipment in a dust-free and dry environment.
- In thunderstorms, please remove the power supply and all wires from the equipment to avoid damage from lightning strikes.

Note: Please use the rated power supply of the device, if you use a mismatched power supply, it may cause damage to the router.

### Specification

Power adapter: DC power supply, 5V/1.5A USB power adapter

### Steps for using the router

#### Quick Steps

- Device inserts SIM card.
- Device inserts SIM card.
- After the device is automatically switched on and the 4G indicator and WiFi indicator are always on, you can connect to this device WiFi (initial hotspot password please get it from the sticker on the body of the device).
- If you need to change the device WiFi password: you can change it on the device WEB management page. (The initial password of WEB management interface should be obtained from the sticker on the device body).

#### Turn on the power

Please use the original factory standard power adapter to power the 4G Wireless Router, plug it in and wait for a few moments as the device will take some time to boot up. After startup, the WiFi indicator light is always on. After successfully registering for 4G network, the 4G indicator light will be on all the time. At this point, you can use your computer, mobile phone or other terminals to connect to the device via WiFi (refer to the sticker on the device for the WiFi name) or network cable to access the Internet using 4G traffic.

### Router configuration

If you need to manage and configure this router, you can connect to the 4G wireless router wirelessly or wired, please refer to the body sticker on top of the router for the default gateway address of this router. These network parameters can be modified according to the actual situation, and the default values will be described in the text.

#### Login to the router configuration page

- Open the browser of your computer or smartphone/tablet, and enter the background IP address 192.168.100.1 on the sticker on the back of the router in the address bar to enter the background login interface.
- In the pop-up login window, enter the username/password: admin; then click 'Login'.

## Warranty Card

Dear customers, thank you for using our Company product. In order to better serve you, please read, fill in and keep this Warranty Card after purchasing the product.

#### User Information

Company or personal name	
Mailing address / Postal code	
Contact number	
E-mail	
Product No.	
Product serial No.	
Product IMEI No.	
Date of purchase	
Invoice No.	
Distributor name	
Distributor address	
Distributor phone	

Kept by users, No reissuing if lost.

Distributor: (seal)

## Warranty Description

For the products of our Company purchased through legal channels, if there is a failure caused by non-human causes within 12 months from the date of purchase, you can enjoy free repair service at a designated and authorized repair place with the purchase invoice.

To guarantee your legal rights, please note the following items:

- The Warranty Card takes effect only after stamped by the distributor.
- The Warranty Card should be properly kept by the user. No reissuing if lost, and invalid if altered.

During the use of the user, one of the following conditions is not covered by free warranty:

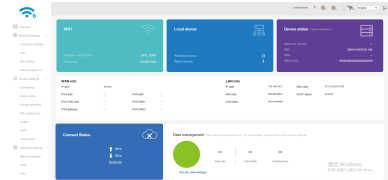
- Malfunction and damage caused during transportation, loading and unloading.
- Malfunction due to human reasons such as disassembly, modification, etc.
- Malfunction caused by the use environment's not meeting the product requirements.
- Malfunction or damage caused by force majeure (such as fire, earthquake, lightning strike, war, etc.).
- Damage caused by failure to use, maintain, or preservation as specified in the equipment manual.
- Damage to the equipment outer case, power supply, etc. caused during use.
- The Warranty Card does not match the product serial No. or the Warranty Card has been altered.

To the products that are not covered by free warranty, and can be repaired, we provide with paid repair services.



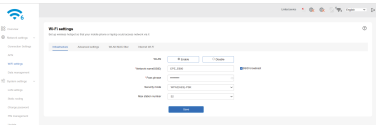
Tip: The initial management user name/password is: admin, users can change the user name/password after entering the system.

3. After entering the correct user name/password, you can enter the router WEB configuration interface.



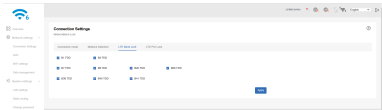
#### WiFi connection settings

Click the "WiFi Settings" button on the homepage to enter the WiFi settings to get and set the basic WiFi information.



### Manual BAND settings

By default, this router will automatically register the 4G network, if the signal of the base station is blocked or the signal is poor, you can manually select the best frequency band to reside in the network. On the left side of the home page, 'Connection Settings' - 'LTE Band Lock', tick one or more bands, and then click save to take effect!



### 4G Internet Settings

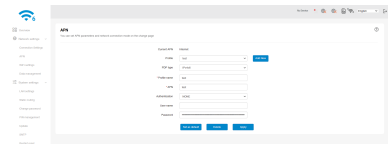
This router supports the function of automatic configuration of 4G dialling parameters for most of the global operators' 4G network dialling parameters, without the need for users to manually configure. If you have special APN customisation requirements, please follow the steps below to enter the settings:

#### (1) APN Setting

Step 1: Make sure the SIM card is valid and works properly;

Step 2: Confirm that the 4G dialling settings of this router meet the setting requirements of the local operator. The procedure is as follows:

Please click on the left side of the home page 'APN' - 'Profile' column ticked click on the new, fill in the profile name, APN parameters, authentication methods, user name, password. Then click Save--Set as default.



#### (2) Setting of the way to find the net

Please click on the left side of the home page, 'Connection Settings' - 'Network selection' column ticker Manual, click on the search, the process of searching for the network about 3-5 minutes, the network list will pop up, including all the searched for networks, the user from the list to tick one of the available networks, click on the Register, the device will be registered to the network selected by the user.

