

BLUETTI

TECHNOLOGY PIONEER
IN CLEAN ENERGY

BLUETTI App

User Manual V2.0

For optimal experience and performance, ensure your device is fully charged and updated to the latest firmware before initial use.

Copyright © 2024 Shenzhen PowerOak Newener Co., Ltd. All rights reserved.

No part of this document may be reproduced or transmitted in any form or by any means without the prior written consent of Shenzhen PowerOak Newener Co., Ltd.

Notice

BLUETTI's products, services, and features are subject to the agreed-upon terms and conditions during purchase. Please note that some products, services, or features described in this manual may not be available under your purchase contract. Unless otherwise specified in the contract, BLUETTI makes no representations or warranties of any kind, express or implied, with respect to the contents of this manual.

The contents of this manual are subject to change without notice. Please get the latest version from: <https://www.bluettipower.com/pages/user-guides>

If you have any questions or concerns about this manual, please contact BLUETTI support for further assistance.

Shenzhen PowerOak Newener Co., Ltd.

F19, BLD No.1, Kaidaer, Tongsha RD No.168, Xili street, Nanshan, Shenzhen, China

Web: <https://www.bluettipower.com>

Contents

1. Getting Started	01
1.1. Download the App	01
1.2. Sign up	01
1.3. Log in	02
1.4. App Languages	02
1.5. Exit	03
2. Connection	04
2.1. Bluetooth	04
2.2. QR Code	05
2.3. Configure the network	05
3. Account Security	06
3.1. Modify Avatar & Username	06
3.2. Change Password	06
3.2. Change Password	07
4. Firmware Upgrade	08

1. Getting Started

1.1. Download the App

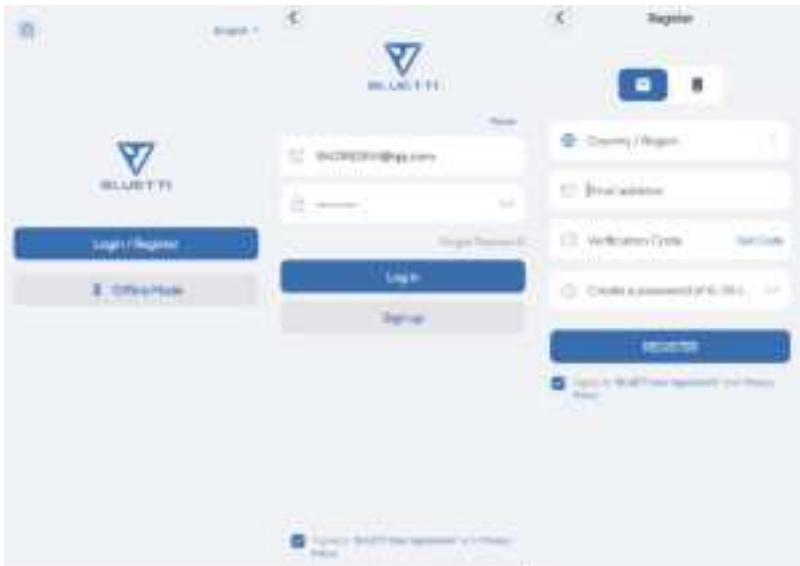
Scan the QR code below to download the BLUETTI App, or search for "BLUETTI" in the App Store or Google Play.



Supported operating systems: iOS 11.0 or above, Android 8.0 or above.

1.2. Sign up

1. Open the App and tap **Login/Register**.
2. Tap **Sign up** and enter your email address.
3. Enter the verification code and tick the checkbox.
4. Tap **Register** to create your BLUETTI account.

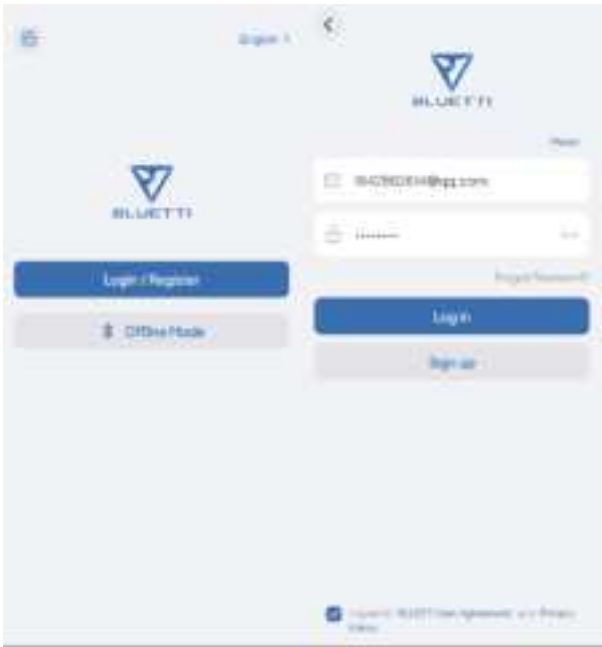


Note: If you don't receive the email with verification code, check your Junk or Spam folder. If you still can't find the email, try "Get Code" again as there may be a delay. If the code is still unavailable, please contact BLUETTI Customer Service for assistance.

1.3. Log in

- 1. Open the App and tap **Login/Register**.
- 2. Enter your account details.
- 3. Tick the checkbox and **Log in**.

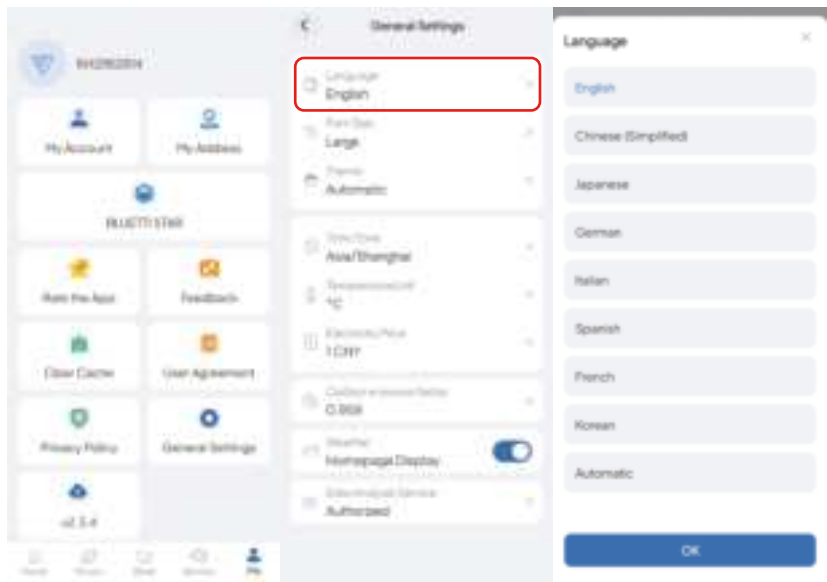
Note: If you forget your password, tap **Forgot Password?** to reset it.



1.4. App Languages

- 1. Go to the **Me** page and tap **General Settings**.
- 2. Go to **General Settings**, choose your desired language, and tap **OK** to save the changes.

Note: By default, the App adapts to the language settings of your mobile device's operating system.



1.5. Exit

- 1.Go to the **Me** page, and tap on your avatar or **My Account**.
- 2.Tap **Sign Out** on the **Account** page.

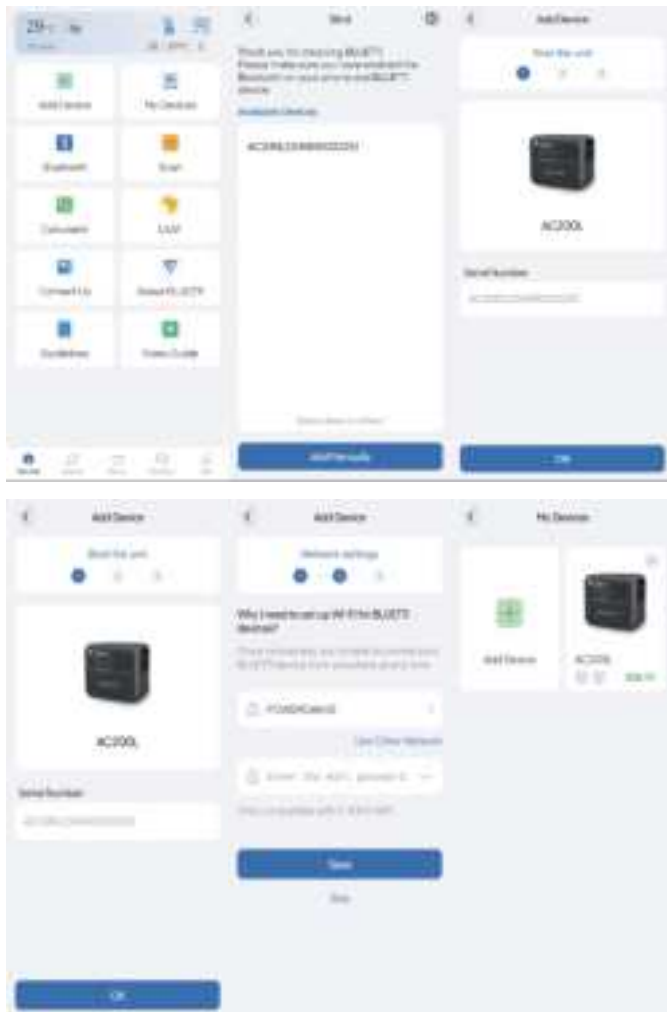


2.Connection

Make sure you are enabled Bluetooth and location service (e.g. GPS) on your phone. If you can't find your device, get closer and Click to refresh the list (recommended range: 5m).

2.1. Bluetooth

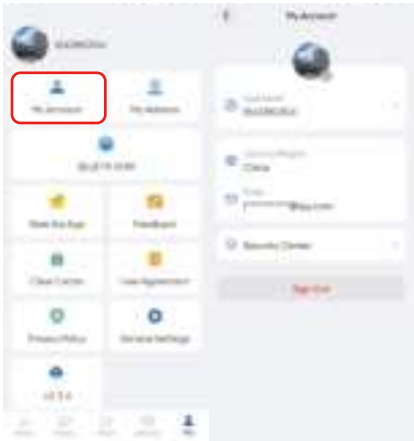
1. Tap **Add Device** on the **Home** page, or tap **Add Device**.
2. On the **Bind** page, select your device's SN number and tap **OK** to finalize the binding process.
3. You can view the bound devices on the **My Devices** page.



3. Account Security

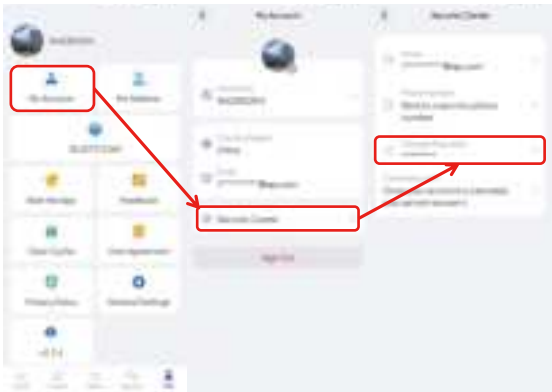
3.1.Modify Avatar & Username

- 1. On the **Me** page, tap on your avatar or **My Account**, and you'll be taken to the **Account** page.
 - 2. Tap on your avatar and you're required to take a photo or select a photo from your album.
- As for the name, tap on the Username and edit a new one. Tap **OK** to save the changes.



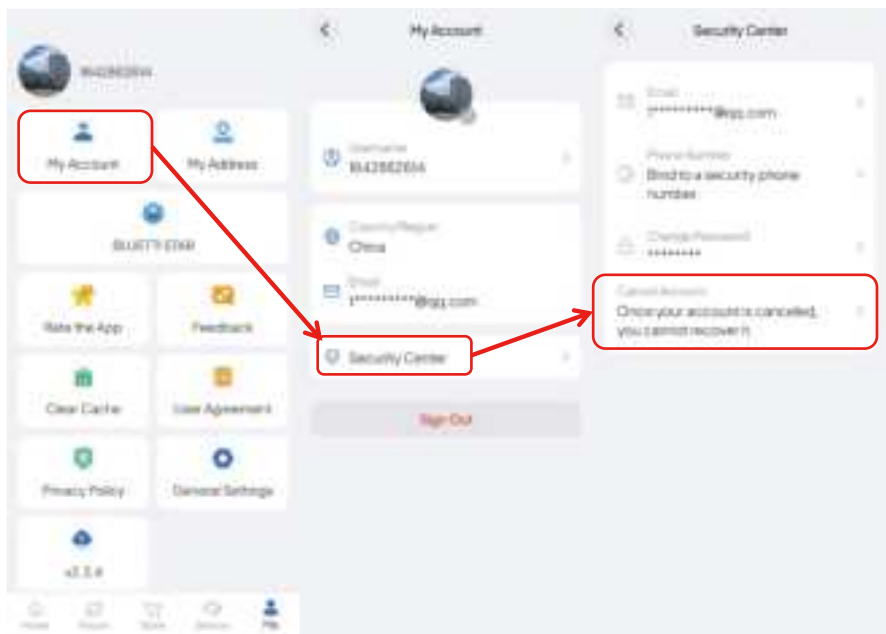
3.2.Change Password

- 1. On the **Me** page, tap on your avatar or **My Account**, and you'll be taken to the **Account** page.
 - 2. Tap **Security Center** at the bottom.
 - 3. Select the **Change Password** from the menu.
 - 4. On the **Change Password** page, enter your passwords and tap **OK** to save the change.
- Note:** For safety purposes, it's recommended that you update the password regularly.



3.3.Cancel Account

- 1. On the **Me** page, tap on your avatar or **My Account**, and you'll be taken to the **Account** page.
- 2. Tap **Security Center** at the bottom.
- 3. Tap **Cancel Account**, and follow the prompts.




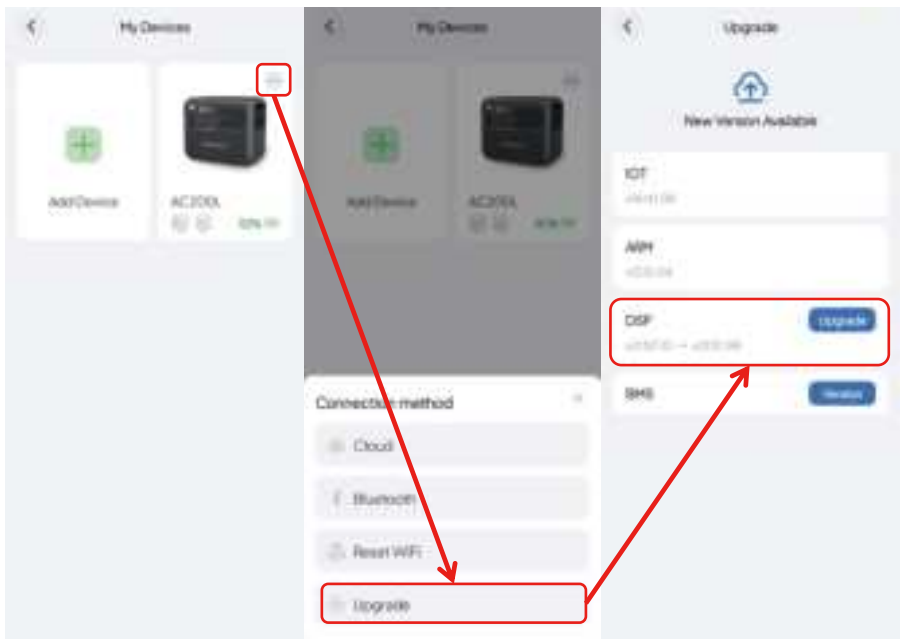
4.Firmware Upgrade

Note:


- Only available when you connect to the product via Bluetooth.
- For a stable connection, keep your phone and product close together (recommended range: 5m).
- During the upgrade, you cannot perform charging, discharging, or any other operations.

The First Method:

- 1.Tap My Devices on the app's Home page.
- 2.Tap  in the upper right corner of the device you want to upgrade on the My Devices page.
- 3.Tap **Upgrade**.
- 4.The App will jump to the Firmware Upgrade page.
- 5.Select the upgrade option.



The Second Method :

- 1.Click  in the upper right corner of the operation status page.
- 2.On the settings page, click Upgrade.
- 3.The application will jump to the Upgrade page.
- 4.Select the upgrade option.

