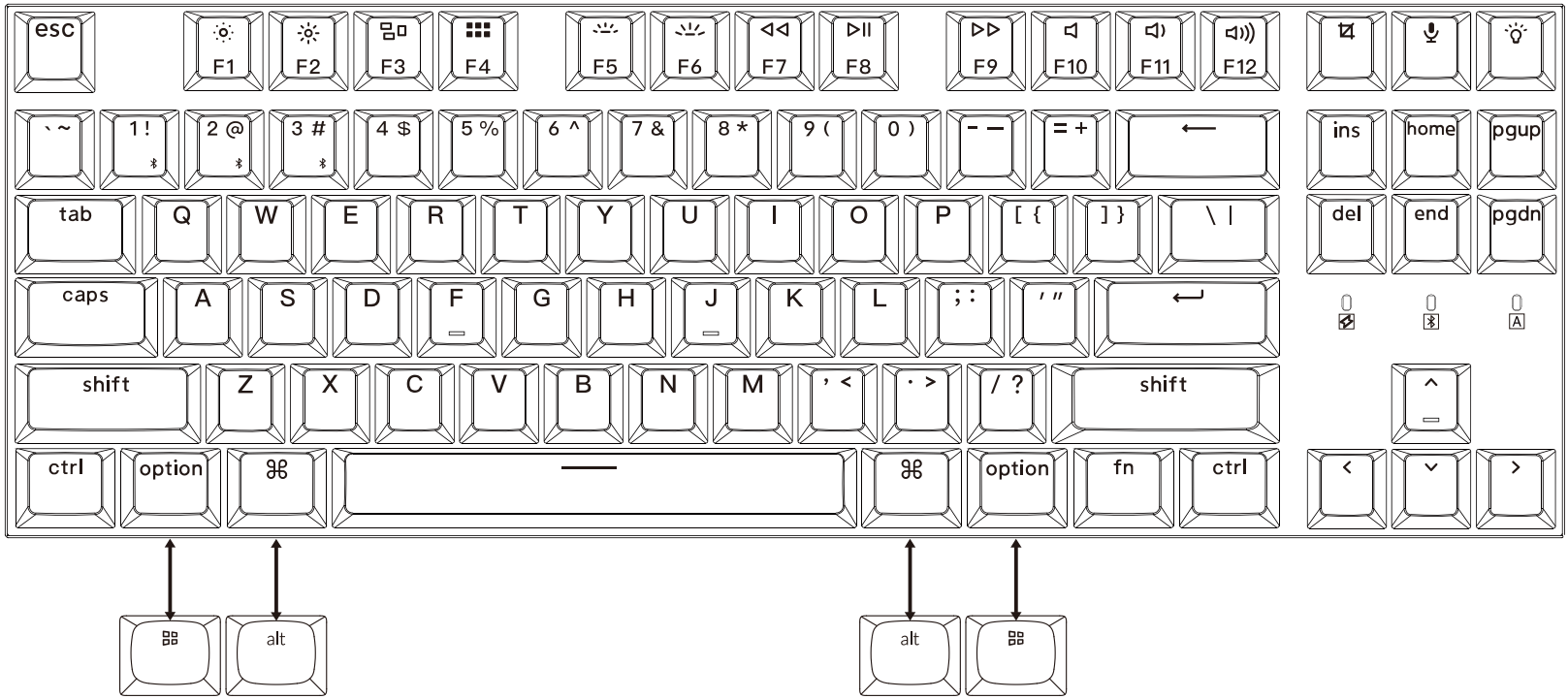
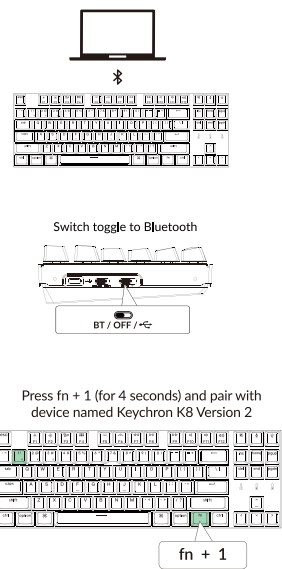


正面:尺寸:318\*160

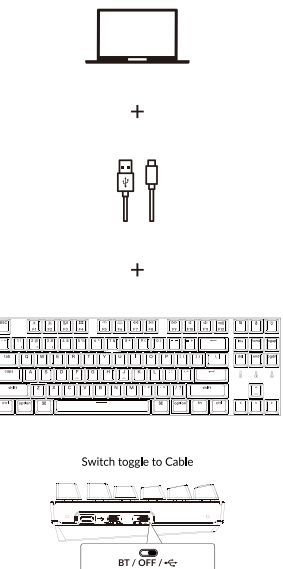
If you are a Windows user, please find the appropriate keycaps in the box, then follow the instructions below to find and replace the following keycaps.

Quick Start Guide

1 Connect Bluetooth



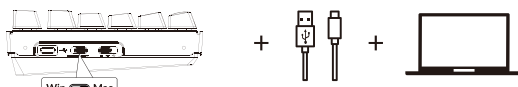
2 Connect Cable



反面:尺寸:318\*160

3 Switch To The Right System

Please make sure the system toggle on the top left corner has been switched to the same system as your computer's operating system.



4 The Backlight

Press fn + Q to change the lighting effect



Press fn + tab to turn the backlight on/off

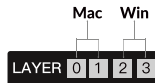


5 The Layers

There are four layers of key settings on the keyboard. The layer 0 and layer 1 are for the Mac system. The layer 2 and layer 3 are for the Windows system.

If your system toggle is switched to Mac, then the layer 0 will be activated.

If your system toggle is switched to Windows, then the layer 2 will be activated. Remember that if you are using it in Windows mode, please make changes to the layer 2 instead of the top layer (the layer 0). This is a common mistake people are making.



6 The Keychron Launcher App

Please visit [launcher.keychron.com](https://launcher.keychron.com) to use the online Launcher web app to remap the keys, create macro commands, or flash the firmware. If the Launcher cannot recognize your keyboard, please reach our support to get the instructions.



\*The online Launcher can only run on the latest version of Chrome, Edge, and Opera browsers.  
\*The Launcher only works when the keyboard is connected by wire to the computer.

7 Factory Reset & Firmware Update



Troubleshooting? Don't know what's going on with the keyboard?

Factory reset your keyboard

1. Power on your keyboard.
2. Press and hold fn + J + Z (for 4 seconds). The keyboard backlight will flash in red quickly for 3 seconds, indicating that the keyboard has been reset.

Flash your keyboard firmware

1. Visit [launcher.keychron.com](https://launcher.keychron.com) to open the online Launcher web app.
2. Ensure the keyboard is in Cable or Wired mode and plug in the power cable.
3. Find the 'Firmware Update' tab on the left side of the Launcher and connect your keyboard with it.
4. Follow the instructions on the Launcher and complete the firmware update.

\*Step-by-step guide, search the keyword "firmware" on [keychron.com](https://keychron.com).

8 Warranty

The keyboard is highly customizable and easy to be rebuilt. If anything goes wrong with any of the keyboard components of keyboard during the warranty period, we will only replace the defective parts of the keyboard, not the whole keyboard.

