



## FiiO CP13 Portable Hi-Res Cassette Player User Manual

[Home](#) » [FiiO](#) » FiiO CP13 Portable Hi-Res Cassette Player User Manual 

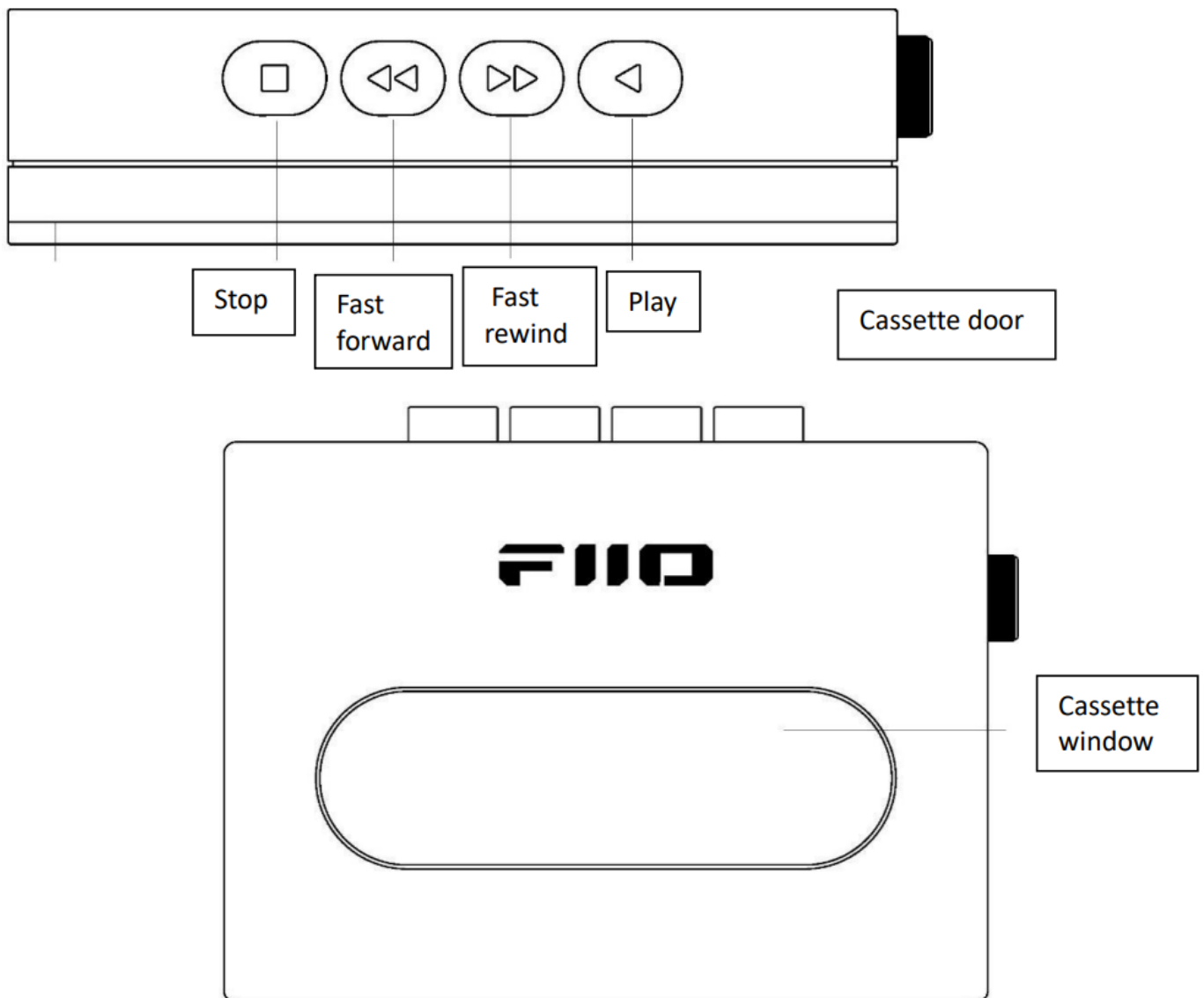
### FiiO CP13 Portable Hi-Res Cassette Player

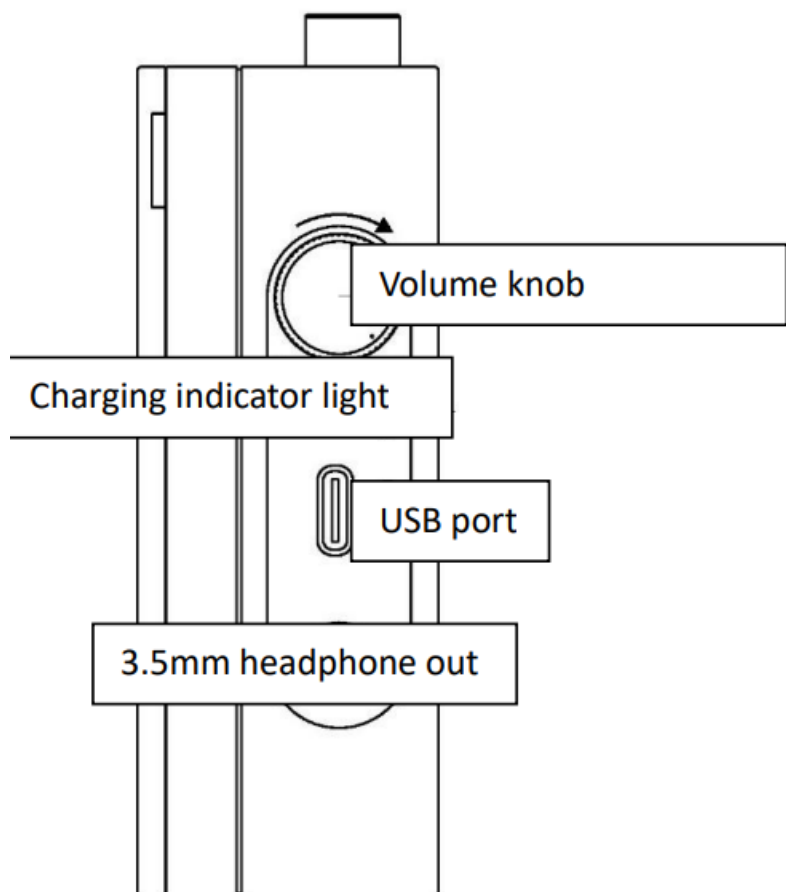


## Contents

- [1 Buttons and Ports Labeled](#)
- [2 Take out and Put in the Cassette](#)
- [3 Charging](#)
- [4 Button Operation](#)
- [5 Notes and Precautions](#)
- [6 Documents / Resources](#)
  - [6.1 References](#)
- [7 Related Posts](#)

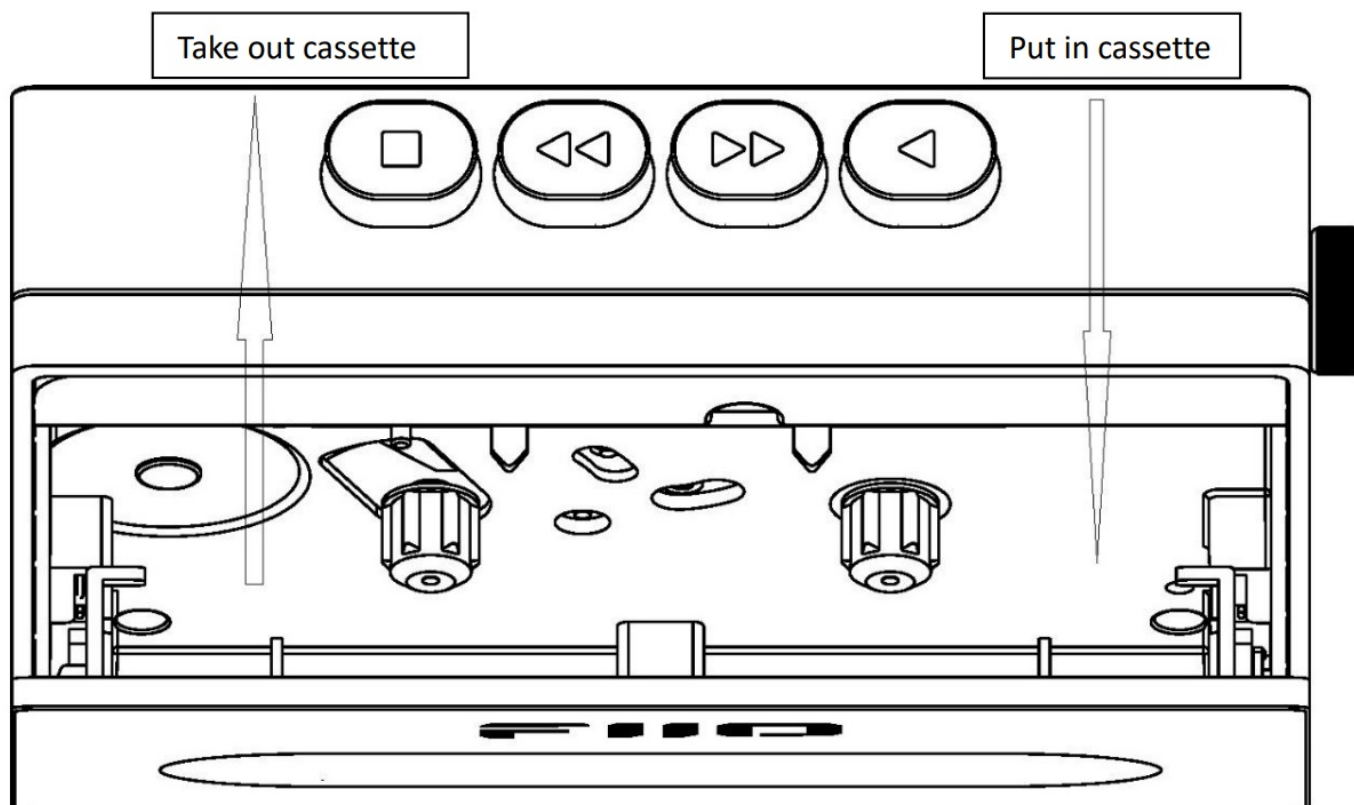
## Buttons and Ports Labeled





## Take out and Put in the Cassette

Please open the front cassette door to take out or put in the cassette in the direction shown in the picture, and then close the door after the cassette is in the right place.



## Charging

The CP13 has a USB port marked as "POWER IN". It is suggested to use a 5V 2A power adapter for power supply and charging.

The color of the charging indicator light represents the current charging status of the device. The red light on means the battery is being charged, and the green light on means the battery is fully charged. If the device is not in the charging state, the indicator light is off.

## Button Operation

**Play:** Press and the left spindle will start to rotate. If there is a cassette in the device, it will start to play normally.

**Fast forward:** Press and the left spindle will start to rotate fast. If there is a cassette in the device, it will start to move forward fast and no music will output at this time.

**Fast rewind:** Press and the right spindle will start to rotate fast. If there is a cassette in the device, it will start to rewind fast, and no music will output at this time.

**Stop:** In the playback, fast forward or fast rewind state, press the Stop button to stop the device. After removing the finger, it will automatically rebound to its original position.

**Volume knob:** The volume level can be adjusted by rotating the volume knob- rotate clockwise to increase the volume and anticlockwise to decrease the volume.

## Notes and Precautions

- Please do not put the battery in a high-temperature environment. The battery is prohibited from use if it is soaked in water, or if it gets swollen. Please do not disassemble, hit, crush, or puncture the battery, and do not put it on fire.
- Please do not place the device in circumstances of excessive high/low temperatures (above 45°C or below 0°C), or in an enclosed high-temperature environment, such as in a car.
- Please do not repair or disassemble the product on your own and do not put it near water.
- If the device is to be left unused for a long time, please recharge it periodically to preserve its battery life.
- You might not be able to hear the sound of the surroundings when using headphones. For your safety, please avoid using headphones in dangerous situations.
- It is recommended to use a suitable charger in case of a high-voltage adapter causing damage to the device.
- When using this product, please keep it away from magnetic objects to prevent any effect on the use of the product or irreversible damage to the product itself.

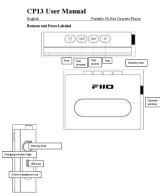
**List of Items Included** (please check if the following items are included)

CP13  
USB cable  
User manual  
Warranty card



## To Learn More

1. For related video instructions of the CP13 and FAQ (Frequently Asked Questions), please scan the QR code below.
2. To learn more about the product, please visit our website: [www.fiiio.com](http://www.fiiio.com)

## Documents / Resources

	<p><a href="#">FiiO CP13 Portable Hi-Res Cassette Player</a> [pdf] User Manual</p> <p>CP13 Portable Hi-Res Cassette Player, CP13, Portable Hi-Res Cassette Player, Hi-Res Cassette Player, Cassette Player, Player</p>
---	--

## References

-  [FiiO--Born for Music](#)
-  [FiiO--Born for Music](#)
- [User Manual](#)

[Manuals+](#), [Privacy Policy](#)

This website is an independent publication and is neither affiliated with nor endorsed by any of the trademark owners. The "Bluetooth®" word mark and logos are registered trademarks owned by Bluetooth SIG, Inc. The "Wi-Fi®" word mark and logos are registered trademarks owned by the Wi-Fi Alliance. Any use of these marks on this website does not imply any affiliation with or endorsement.