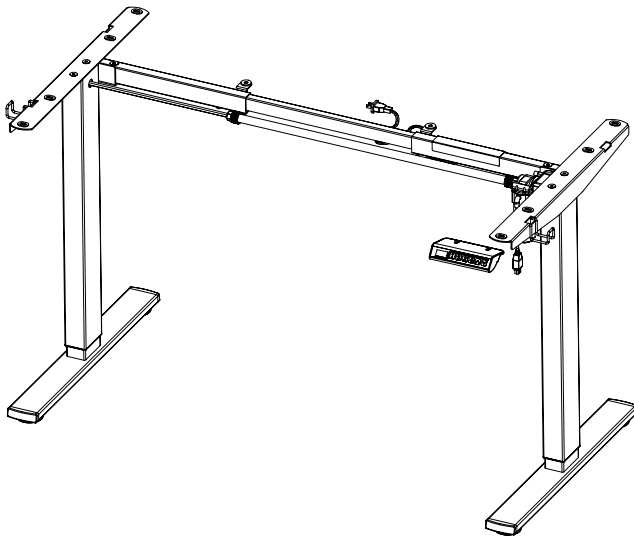




Black Electric Single Motor Desk Frame

Instruction Manual



SKU: DESK-V100EBY



Scan the QR code with your mobile device or follow the link for helpful videos and specifications related to this product.

<https://vivo-us.com/products/desk-v100eby>

GET IN TOUCH | Monday-Friday from 7:00am-7:00pm CST



help@vivo-us.com



www.vivo-us.com
Chat live with an agent!



309-278-5303



WARNING!

If you do not understand these directions, or if you have any doubts about the safety of the installation, please call a qualified technician. Check carefully to make sure there are no missing or defective parts. Improper installation may cause damage or serious injury. Do not use this product for any purpose that is not explicitly specified in this manual and do not exceed weight capacity. We cannot be liable for damage or injury caused by improper mounting, incorrect assembly, or inappropriate use.

ELECTRICAL SAFETY INSTRUCTIONS

THIS PRODUCT IS POWERED BY ELECTRICITY. IN ORDER TO AVOID BURNS, FIRE AND ELECTRIC SHOCK, PLEASE READ THE FOLLOWING INSTRUCTIONS CAREFULLY.

- DO NOT CLEAN PRODUCT WHILE POWER IS CONNECTED.
- DO NOT DISASSEMBLE OR REPLACE COMPONENTS WHILE POWER IS CONNECTED.
- NEVER OPERATE THE SYSTEM WITH A DAMAGED CORD OR PLUG. PLEASE CONTACT YOUR SELLER TO REPLACE DAMAGED PARTS.
- NEVER OPERATE SYSTEM IN DAMP ENVIRONMENTS OR IF ANY ELECTRICAL COMPONENTS HAVE MADE CONTACT WITH LIQUIDS.
- ALTERATIONS OF THE GIVEN POWER UNIT ARE NOT ALLOWED.
- OUTDOOR USE IS PROHIBITED.

WARNING: CHOKING HAZARD

SMALL PARTS - NOT FOR CHILDREN UNDER 3 YEARS. ADULT SUPERVISION IS REQUIRED.

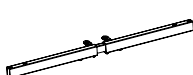
PACKAGE CONTENTS



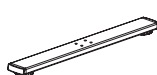
A (x1)
Leg



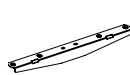
B (x1)
Motorized Leg



C (x1)
Crossbar



D (x2)
Foot



E (x2)
Side Bracket



F (x1)
Tray



G (x1)
Sync Rod



H (x1)
Control Panel



I (x1)
AC Adapter



J (x1)
Power Cable



K (x2)
Hook



S-A (x4)
M8x50 Screw



S-B (x4)
M8x12 Screw



S-C (x8)
M6x35 Screw



S-D (x12)
ST4.2x16 Screw



S-E (x5)
Cable Clip



T-A (x1)
5mm Allen Wrench



T-B (x1)
Wrench

TOOLS NEEDED



Phillips
Screwdriver



Drill

DO NOT EXCEED WEIGHT CAPACITY.

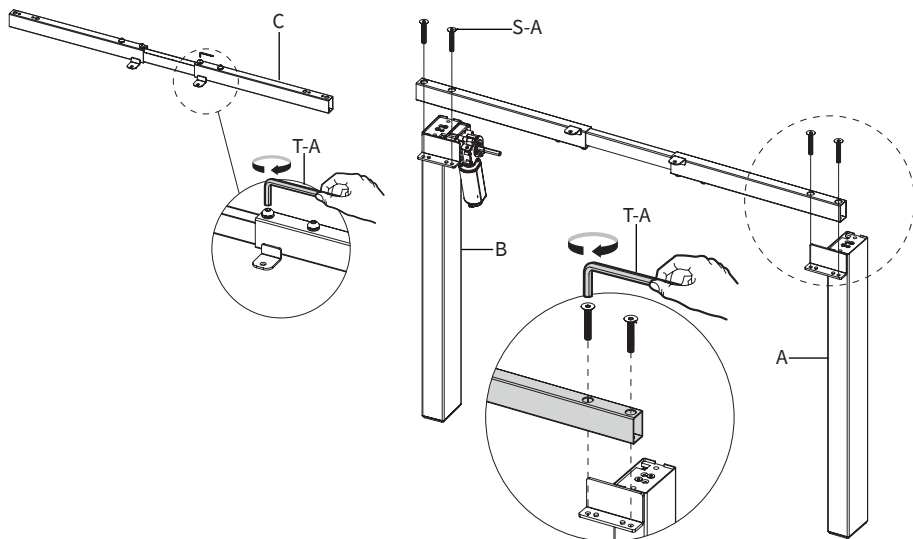
Failure to do so may result in serious injury.



ASSEMBLY STEPS

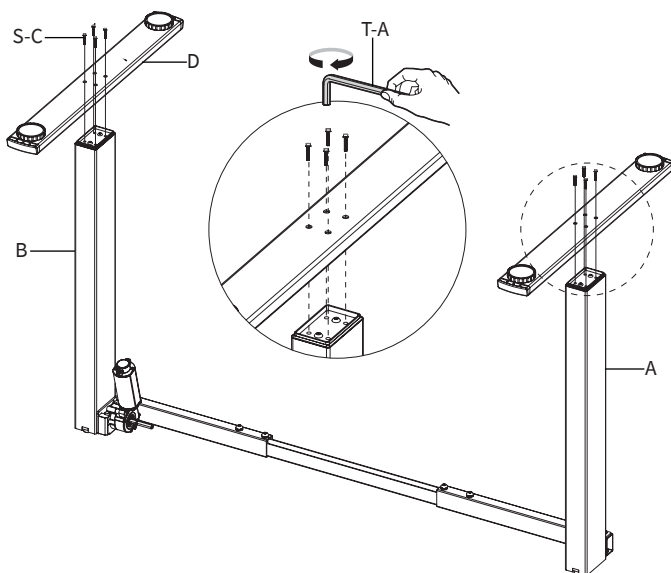
STEP 1

Loosen the screws on Crossbar **(C)** using 5mm Allen Wrench **(T-A)** and extend. Assemble Crossbar **(C)** to Leg **(A)** and Motorized Leg **(B)** using M8x50 Screws **(S-A)** and 5mm Allen Wrench **(T-A)**.



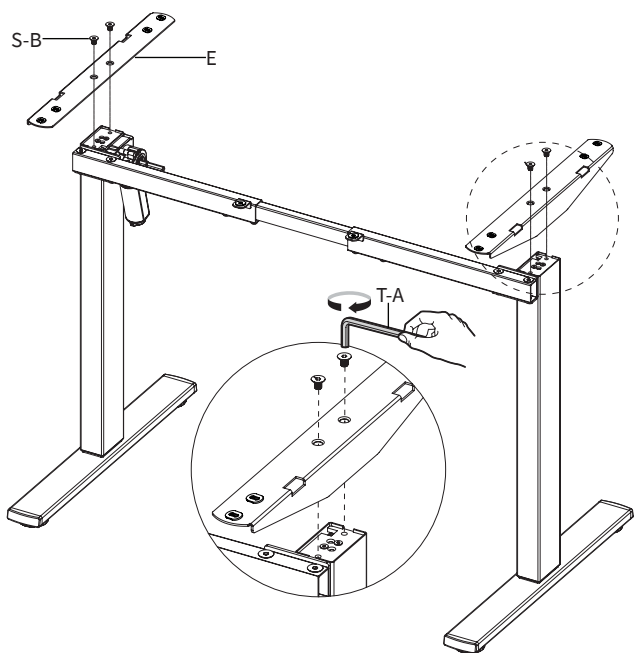
STEP 2

Assemble Feet **(D)** to Leg **(A)** and Motorized Leg **(B)** using M6x35 Screws **(S-C)** and 5mm Allen Wrench **(T-A)**.



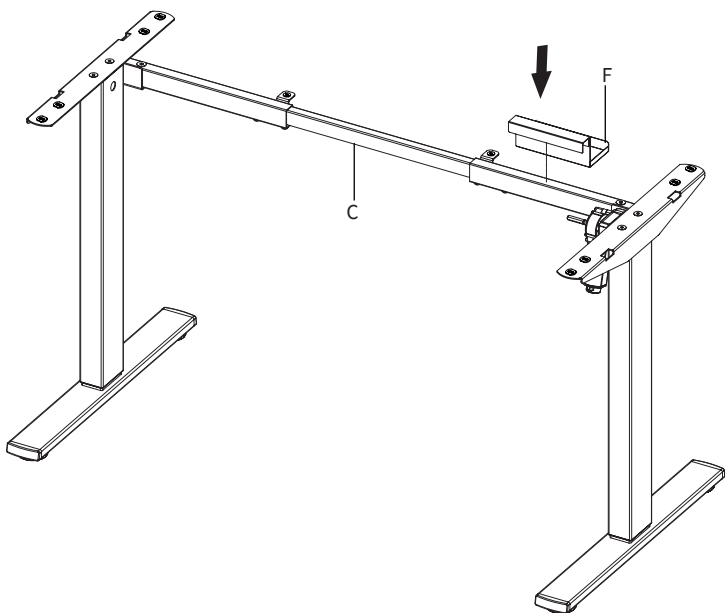
STEP 3

Mount Side Brackets (**E**) to the frame assembly using M8x12 Screws (**S-B**) and 5mm Allen Wrench (**T-A**).



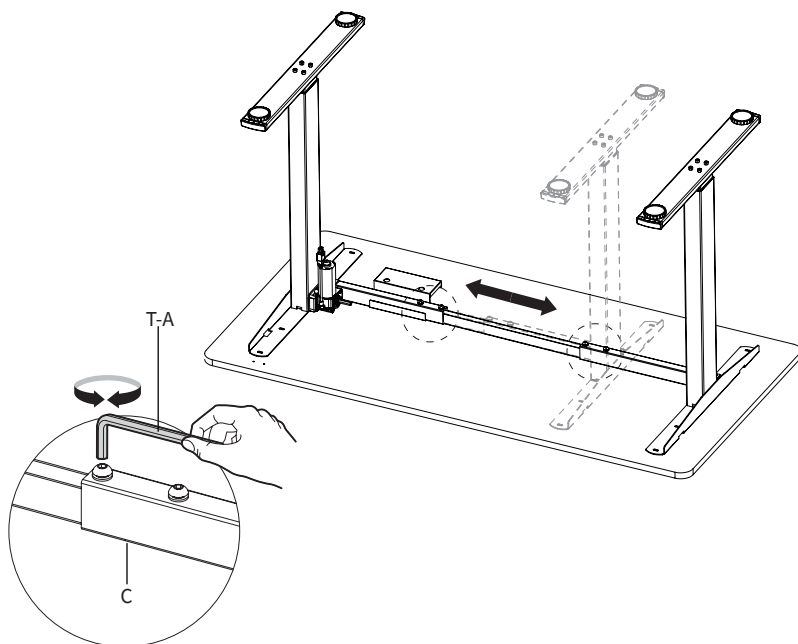
STEP 4

Hang Tray (**F**) over Crossbar (**C**).



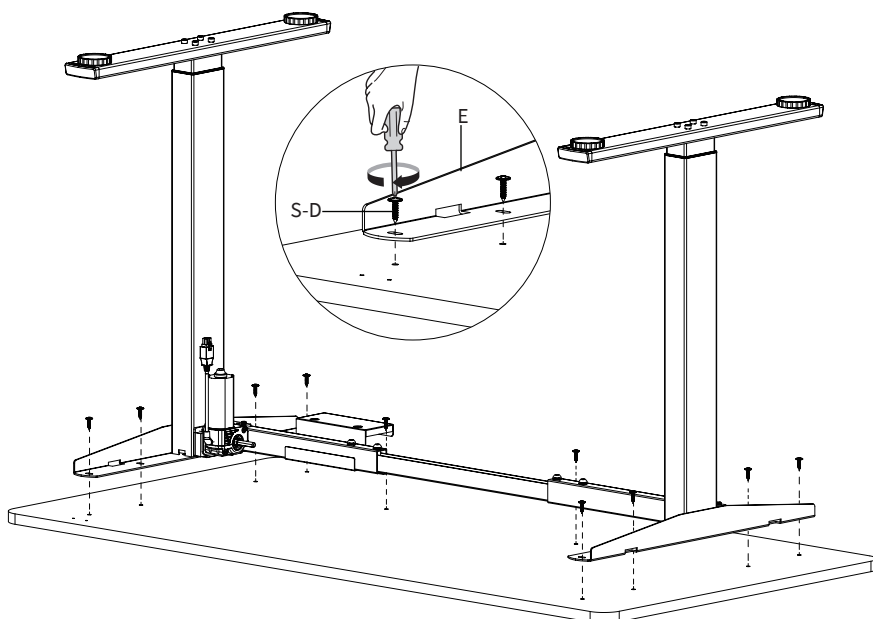
STEP 5

Loosen the screws on Crossbar **(C)** using 5mm Allen Wrench **(T-A)** and extend to fit your desktop. Once adjusted, retighten the screws.



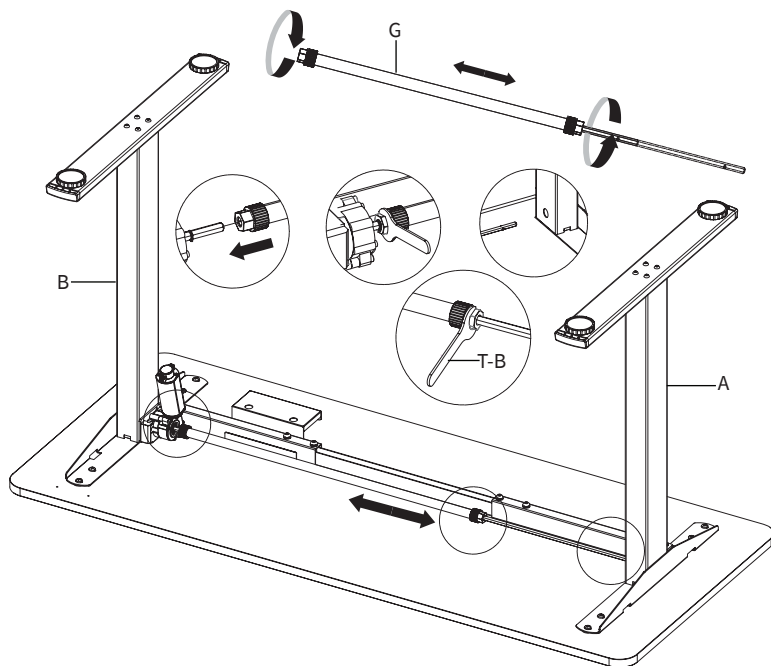
STEP 6

Mark and drill pilot holes to a depth of 3/8" (10mm) using a 1/8" (3mm) bit where Side Brackets **(E)** align on the desktop. Secure the frame assembly using ST4.2x16 Screws **(S-D)** and a Phillips screwdriver.



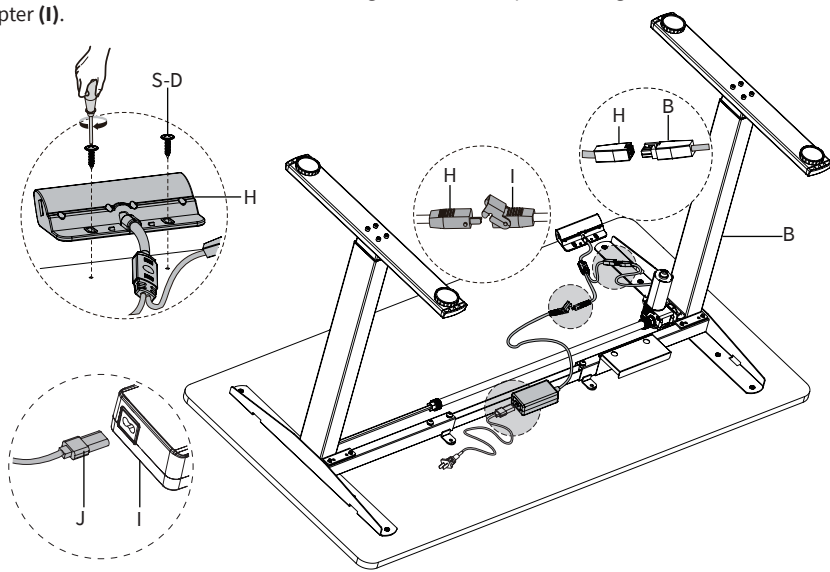
STEP 7

Loosen the knob on Sync Rod (**G**) and extend the larger end onto the hex shaft on Motorized Leg (**B**). Tighten the nut onto the hex shaft using Wrench (**T-B**). Extend the hex shaft on Sync Rod (**G**) into Leg (**A**). Tighten the nut using Wrench (**T-B**).



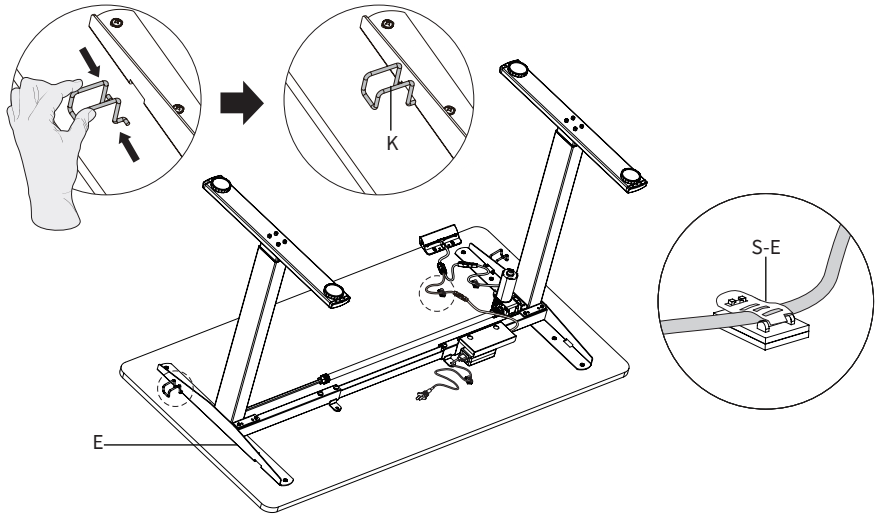
STEP 8

Use Control Panel (**H**) to mark and drill pilot holes to a depth of 3/8" (10mm) using a 1/8" (3mm) bit. Mount Control Panel (**H**) to the desktop using ST4.2x16 Screws (**S-D**) and a Phillips screwdriver. Connect cables from Control Panel (**H**) to Motorized Leg (**B**) and AC Adapter (**I**). Plug Power Cable (**J**) into AC Adapter (**I**).



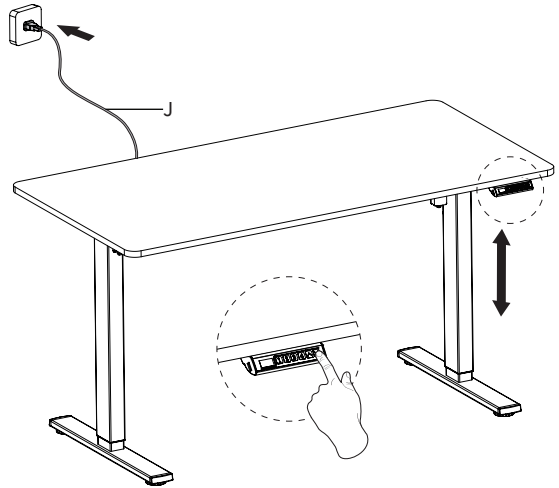
STEP 9

Insert Hooks **(K)** into Side Brackets **(E)**. Place AC Adapted **(I)** in Tray **(F)**. Organize cables using Cable Clips **(S-E)**.



STEP 10

Plug Power Cable **(J)** into an AC power outlet. The desk is now ready for use. Please refer to the Control Panel User Guide for operational instructions.



CAUTION!



Do not exceed desk weight limit.



Keep area of vertical motion free of obstacles.



Keep weight on desk balanced for correct operation and longer life of



Leave enough slack in cables to allow for full range of vertical motion.

Failure to follow these instructions may result in property damage and/or personal injury.



Open **Monday - Friday 7:00am - 7:00pm** CST,
our dedicated support team can offer immediate assistance with rapid response times. If any
parts are received damaged or defective, please contact us. We are happy to replace parts to
ensure you have a fully functioning product.



309-278-5303

AVG. RESOLUTION TIME (*within office hrs*): **5M 4S**



www.vivo-us.com
Chat live with an agent!

AVG. RESOLUTION TIME (*within office hrs*): **< 15 M**



help@vivo-us.com

AVG. RESPONSE TIME (*within office hrs*): **1HR 8M**

- 23% within < 15m
- 38% within < 30m
- 61% within < 1hr
- 83% within < 2hr
- 92% within < 3hr