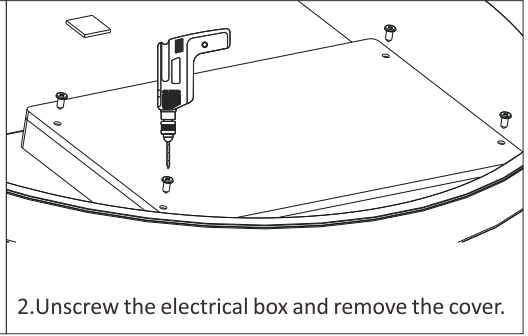
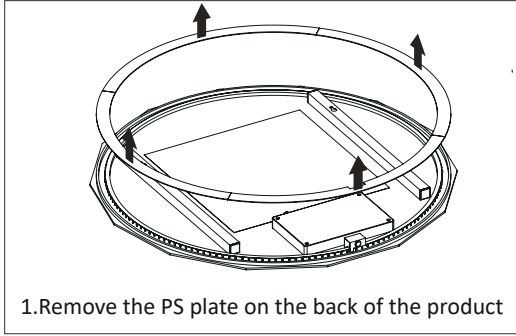


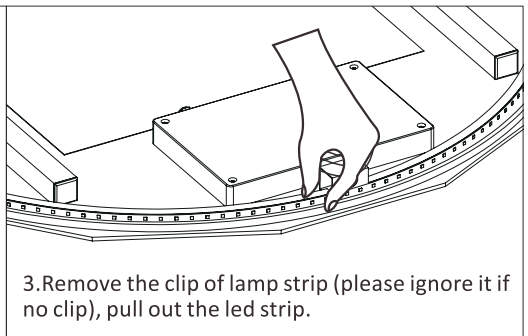
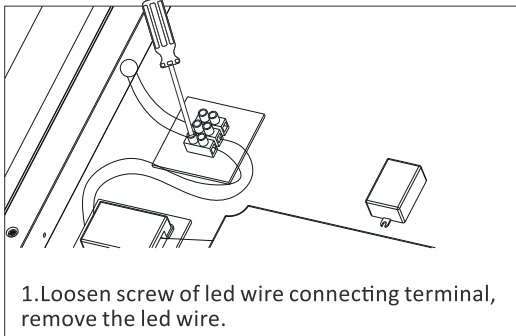
# LED strip and LED driver removal instruction manual

TURN OFF ELECTRCITY SUPPLY BEFORE WORK IS CARRIED OUT

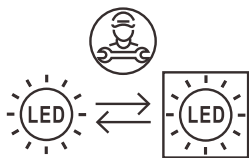
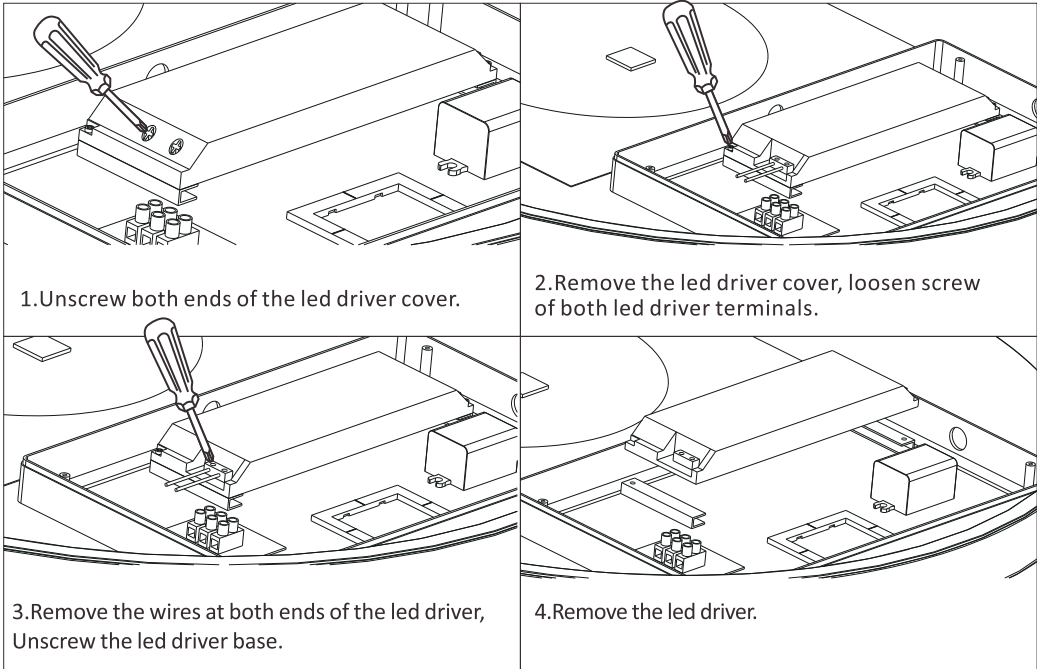
Open the backboard or electrical box firstly:



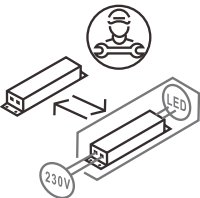
LED strip removal step:



**LED driver removal step:**



Replaceable (LED only)  
light source by a professional



Replaceable control gear  
by a professional

This product contains a light source of energy efficiency class ‘E’  
The pictograms are available in .jpg and eps format through the following link: