

LIBERO C PDF Logger & Indicator

Operation Manual



ELPRO-BUCHS AG

Warranty conditions and liability disclaimer

Liability

- ELPRO-BUCHS AG does not accept any liability for direct, indirect, special, incidentally occurring, randomly occurring or subsequent damage or losses including lost profit or data resulting from the use of their data loggers, sensors, accessories, software products or information from the documentation.
- ELPRO-BUCHS AG does not bear any responsibility for the installation of the software products.
- ELPRO-BUCHS AG does not provide any guarantees, either explicit or implicit, regarding the usability or suitability of their products for a specific purpose.
- In the interest of our customers we reserve the right to make changes and discontinue the product on the basis of technical advancement. For this reason the functionality, diagrams, descriptions and scope of supply can be modified without prior notification!
- As individual countries or states do not permit the concept of an implicit warranty or a liability disclaimer for incidental or subsequent damage, the restrictions and disclaimers may not apply to all customers. If one of the provisions of this warranty is declared by a competent court to be invalid or not enforceable, this does not affect the validity or enforceability of the remaining provisions.
- ELPRO-BUCHS AG does not accept any liability for transport damage.
- In general the statutory regulations of Switzerland apply.

Guarantee

- The guarantee obligations of ELPRO-BUCHS AG are limited to reworking, reimbursement of the purchasing price, repair free of charge or the replacement of a faulty product that is returned within the guarantee period to ELPRO-BUCHS AG or an approved reseller of ELPRO-BUCHS AG.
- There is no obligation to provide on-site customer support by an employee of ELPRO-BUCHS AG.
- The guarantee is only applicable to the original purchaser or end user and customer of an approved reseller of ELPRO-BUCHS AG.
- Resellers approved by ELPRO-BUCHS AG are not authorized to enter into any extended or different guarantee obligations in the name of ELPRO-BUCHS AG.
- ELPRO-BUCHS AG provides a guarantee of 24 months on the following new products:
 - Data logger
 - Brackets
 - Accessories excluding probes and third-party products
- This guarantee is valid for material faults or production faults.
- ELPRO-BUCHS AG provides a guarantee of 6 months for the following products and services:
 - All servicing and repair work
 - Temperature probe
 - Humidity probe
- ELPRO-BUCHS AG provides a 90 day guarantee that the medium on which the software product is supplied is free from material and processing faults under normal conditions. All main items of the software product comply with the operating instructions and the information in the help file.
- The guarantee does not apply to consumables, disposable batteries or any other product that ELPRO-BUCHS AG deems to be:
 - misused
 - modified
 - replaced by an incorrect product
 - damaged as the result of an accident or operational or handling conditions that do not comply with the specifications.
- Wear, cable breakage and corrosion are not covered by the guarantee.
- For third-party products ELPRO-BUCHS AG provides the maximum guarantee period of the manufacturer.
- ELPRO-BUCHS AG only provides a guarantee and customer support for discontinued products for a limited period.
- Repair work covered by the guarantee is solely carried out at the works (ELPRO-BUCHS AG) or by an agent approved by the works.
- ELPRO-BUCHS AG does not offer any guarantee for the standard or SCS calibration of the data loggers and probes. The stated data correspond to the situation during the calibration process.

Software

- The software products of ELPRO-BUCHS AG are subject to internal quality requirements and are validated regularly at the works. In the event of program errors, circumvention of the error is regarded as constituting its elimination.
- Software manuals do not contain either instructions on basic operation of a computer or the basic functions of the Windows® operating system. For information on the operation of the computer or the operating system please refer to the applicable computer manuals.

Data loggers, sensors and accessories

- ELPRO-BUCHS AG applies the highest quality standards during production of the data loggers and their accessories as well as a certified quality management system in compliance with ISO 9001:2008.
- For information on operation of the data loggers and their accessories please refer to the respective product documentation.
- During the installation of data loggers, probes and accessories, compliance with the locally valid installation regulations is mandatory.
- When used in potentially explosive atmospheres, the zone category and the application and safety instructions of ELPRO-BUCHS AG must be complied with.
- In the event of a guarantee claim, customers receive a repair cost estimate from ELPRO-BUCHS AG to obtain the corresponding consent before starting work.
- The customer will bear the transport costs incurred for any repairs carried out by ELPRO-BUCHS AG. The DAP (value added tax) is borne by ELPRO-BUCHS AG.
- ELPRO-BUCHS AG reserves the right to invoice the customer for costs incurred for repair/part replacement.
- After repair work the product is returned to the purchaser, who will be charged with the return shipping costs (FOB shipping point).

Trademarks

All stated company and product names and their trademarks are the protected property of the respective owner.

Table of Contents

| | | |
|----------|--|-----------|
| 1 | LIBERO Cx safety information | 8 |
| 1.1 | Influence of temperature | 8 |
| 1.2 | Battery..... | 8 |
| 1.3 | Disposal | 8 |
| 1.4 | Exceptional environmental conditions..... | 9 |
| 2 | Quick start..... | 10 |
| 3 | Configuration of a LIBERO Cx..... | 11 |
| 3.1 | Introduction to liberoCONFIG | 11 |
| 3.1.1 | Configuration file till SmartStart Pack & Go exe file..... | 11 |
| 3.1.2 | System requirements..... | 12 |
| 3.2 | Status information LIBERO Cx display | 12 |
| 3.2.1 | EoL - End of Life | 13 |
| 3.2.2 | Schedule: Start to stop of logging..... | 14 |
| 3.2.3 | Error codes | 14 |
| 3.2.4 | Temperature alarm | 14 |
| 3.2.5 | Configuration mode | 15 |
| 3.3 | Start of liberoCONFIG..... | 16 |
| 3.3.1 | Options | 18 |
| 3.3.2 | Menus | 20 |
| 3.3.3 | Buttons | 20 |
| 3.3.4 | Confirmation | 20 |
| 3.3.5 | Configuration Profiles | 21 |
| 3.4 | Configuring the LIBERO Cx | 21 |
| 3.4.1 | Description..... | 22 |
| 3.4.2 | Logging | 23 |
| 3.4.3 | Alarm conditions | 24 |
| 3.4.4 | Time settings | 29 |
| 3.4.5 | PDF Options | 30 |
| 3.4.6 | Handling Options | 33 |
| 3.4.7 | Apply Configuration Profile | 34 |
| 3.4.8 | View/Print configuration..... | 34 |
| 3.5 | Passwords | 36 |
| 3.6 | Calibration - View/Print | 37 |
| 3.7 | Check PDF Report Integrity | 39 |

| | | |
|----------|--|-----------|
| 3.7.1 | Example: Check the PDF Report Integrity..... | 39 |
| 3.8 | LIBERO SmartStart settings | 41 |
| 3.8.1 | Items | 43 |
| 3.8.2 | Configuration Report | 46 |
| 3.8.3 | Create SmartStart Pack & Go..... | 52 |
| 3.9 | Help..... | 53 |
| 4 | Using SmartStart Pack & Go | 54 |
| 4.1 | Change of Settings | 56 |
| 4.2 | Error Messages..... | 57 |
| 5 | Miscellaneous..... | 58 |
| 5.1 | Software license..... | 58 |
| 5.2 | ELPRO Customer Service Information | 59 |
| 5.3 | Revision History | 59 |

Symbols and designations



Information



IMPORTANT INFORMATION AND WARNING

⇒ Reference to supplementary section [xxx / yyy / zzz; e.g. 3.4.4 *Time settings* / Summer time / start date] or document

| | |
|-------------------|---|
| LIBERO Cx | Name of the data logger or indicator. |
| PDF report | Logged transport information is created as ****.pdf file. |
| liberoCONFIG | Program for the configuration of a LIBERO |
| LIBERO SmartStart | Application for simple and reliable assignment of configuration profiles on a LIBERO. |



In the interest of our customers we reserve the right to make any changes resulting from technical advancement. For this reason diagrams, descriptions and the extent of delivery are subject to change without any notice!

This manual is valid for software release 2013.6.3.x.

Introduction

LIBERO Cx is used for monitoring the transport of temperature sensitive goods. Temperature limits, the mean kinetic temperature (MKT) and the logging time can be set as alarm criteria and monitored during transport. Upon arrival the LIBERO Cx is connected to any USB port and automatically generates a PDF report with the transport logging results. No additional software is required to read out the LIBERO Cx. The PDF report is created in PDF/A format and is compliant with the ISO 19005-1 Document Management Standard which permits long-term archiving of the PDF report without further conversion.

The LIBERO Cx settings are made with the liberoCONFIG configuration software. During configuration not only the device settings such as the logging interval, alarm limits and device behavior can be set, but also the text information and the content of the PDF report can be specified. The selected settings can be saved as a configuration profile and easily transferred to other LIBERO Cx.

If there are several LIBERO Cx that are to be configured with the same setting, previously created configuration profiles can be transferred directly with the LIBERO SmartStart application. Transfer is absolutely reliable and safe as no device settings are accessible during this process. LIBERO SmartStart is used to load the correct configuration profile onto the LIBERO at the start of transport quickly and reliably. When assigning a profile with the LIBERO SmartStart, previously defined fields can be filled with shipment-related information such as the transport number, order number, carrier etc. This permits creation of shipment-related PDF reports with all details of the transport.

The data logged with the LIBERO Cx can additionally be analyzed, evaluated and commented with the elproVIEWER software.

In addition to the LIBERO Cx for transport monitoring, the LIBERO Tx device family provides a wide selection of LIBERO data loggers for the widest range of applications (multiple usage, dry ice and cryo-monitoring, temperature and moisture logging etc.).



A LIBERO PDF REPORT IS A PDF/A - ISO STANDARD FILE ONLY OPEN THE FILE WITH A PDF READER

Always save the PDF file from the LIBERO Cx directly and without opening it or send it as an e-mail attachment. Opening and saving of the PDF file with a PDF editor can make additionally embedded data unusable for subsequent processing with elproVIEWER, elproASSISTANT or liberoMANAGER. The integrity of a PDF report can be checked with the "Check PDF file integrity" function in liberoCONFIG. The mentioned software performs this check automatically.

Common LIBERO Cx

- Single use
- Logging of 8800 values
- Interval of 1 to 60 minutes
- No special device driver required
- Fully user configurable

Types



LIBERO CS

PDF logger

- Multi alarm zones, time and MKT alarm
Up to four high alarm zones (H) can be defined
Up to three low alarm zones (L) can be defined.
PDF report with graph



LIBERO CD

PDF logger

- For dry ice shipments
- Multi alarm zones, time and MKT alarm
Up to four high alarm zones (H) can be defined
Up to three low alarm zones (L) can be defined.
PDF report with graph



LIBERO CB

PDF logger

- Single alarm, time and MKT alarm
Only one high alarm zone (H) and one low alarm zone (L) can be defined
PDF report with graph



LIBERO CI

PDF indicator

- Multi alarm zones, time and MKT alarm
Up to four high alarm zones (H) can be defined
Up to three low alarm zones (L) can be defined.
PDF report without graph



THE PDF REPORT OF A LIBERO CI DOES NOT CONTAIN A GRAPH OF THE TEMPERATURE CURVE!

1 LIBERO Cx safety information

1.1 Influence of temperature

⇒ For the application range: www.elpro.com.

- There is danger of a gas explosion when the lithium battery heats up to temperatures exceeding 100 °C.
- Do not throw LIBEROs into fire, the battery could explode.

1.2 Battery

Lithium battery

Material Safety Data Sheet (form according to EEC Directive 93/112/EC) and shipment recommendation are available from ELPRO-BUCHS AG.

- Lithium, manganese dioxide
- Non-rechargeable button cell battery
- No shipping declaration necessary

1.3 Disposal

1

Europe

WEEE



This product has to be disposed of according to WEEE (Waste Electrical and Electronic Equipment, 2002/96/EC)!

U.S.A.

Find a drop-off center for electronic waste in your area to dispose of the LIBERO. In any case it is recommended to contact the local EPA (U.S. Environmental Protection Agency) office. <http://www.epa.gov>

International

If possible, dispose of the LIBERO in an official drop-off center for electronic waste in your area. Many countries enforce electronic recycling.

http://en.wikipedia.org/wiki/Electronic_waste.

1.4

Exceptional environmental conditions

Infrared radiation
Microwaves
X-Ray

Pay attention to the following if you use the LIBERO Cx under exceptional environmental conditions:

- IR radiation (heat) and superheated steam can result in deformation of the case.
- There is a risk that the battery may explode if the logger is used in conjunction with microwaves.
- X-rays can harm the LIBERO. The specifications are on file at ELPRO-BUCHS AG.

⇒ 3.4.5.1 *Status information and error messages in the PDF report*

CE



This product must be certified with CE

The manufacturer warrants this product is compliant to the following guidelines EN 61000-6-2:2006 and EN 61000-6-4:2006.

EMI

LIBERO Cx PDF loggers and indicators meet the requirements regarding electromagnetic interference (EMI) for portable electronic devices for use on airplanes in accordance with the definition in the Advisory Circular 91-21.1B of the Federal Aviation Administration (FAA,) and were tested in accordance with RTCA/DO-160G Environmental Conditions and Test Procedures for Airborne Equipment.

2 Quick start

Case elements



1. Protection cap
2. USB connector
3. Display; a non-configured LIBERO Cx displays "ConF".
4. Start/Stop button
5. Exp:XX/YYYY
Expiry date: The LIBERO Cx can no longer be used after this date.
Device ID: 7100 0000 000

Display



1. Run
Flashes when the LIBERO Cx is active; data logging or delay
2. Battery exhausted
Signals a low battery charge. Access to the data through the USB ports is still possible.
3. Profile
The displayed value corresponds with the Profile-ID
⇒ see 3.4.6 *Handling Options - Profile-ID*
4. Alarm indicator
The alarm indicator shows whether everything was within limits to date or if limits were violated.
5. Temperature unit
6. Measured value or information



Start/Stop button



- A configured LIBERO Cx is started by pressing and holding the Start/Stop button for at least three seconds.
⇒ 3.4.6 *Handling Options*
- The Profile-ID can be displayed by briefly pressing the Start/Stop button when the LIBERO Cx is configured or stopped.
- A running LIBERO Cx is stopped by pressing and holding the Start/Stop button for at least three seconds.
- The Start/Stop button can be deactivated.
⇒ 3.4.6 *Handling Options*

3 Configuration of a LIBERO Cx

3.1 Introduction to liberoCONFIG

liberoCONFIG is the software to configure LIBERO PDF loggers and indicators. The necessary configuration parameters of the LIBEROs can be set and additionally saved in a configuration profile. The profile contains all information regarding the monitored transport and the information that is documented in the PDF report. SmartStart Pack & Go allows to assign to larger number of LIBEROs quickly and safely a configuration profile.

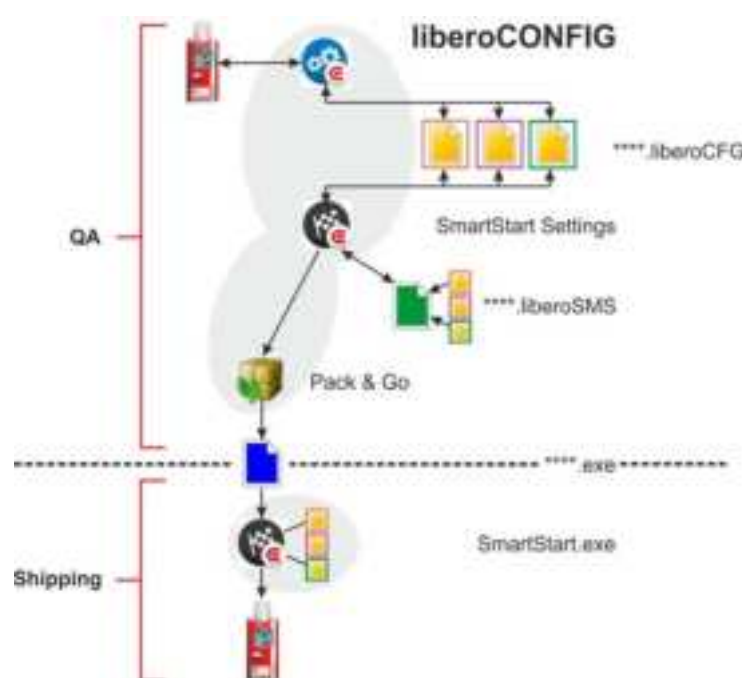


In this operation manual the designation LIBERO Cx stands for the types LIBERO CS, LIBERO CB and LIBERO CI.

Details on the current models and their data sheets are available at www.elpro.com

3.1.1 Configuration file till SmartStart Pack & Go exe file

The configuration of an individual LIBERO Cx is carried out with liberoCONFIG. This work is simplified considerably if configurations are repeated frequently by the use of SmartStart and Pack & Go.



Configuration variants



SmartStart Pack & Go exe file with a LIBERO Cx can be used on any PC without installation or a special driver.

3.1.2

System requirements

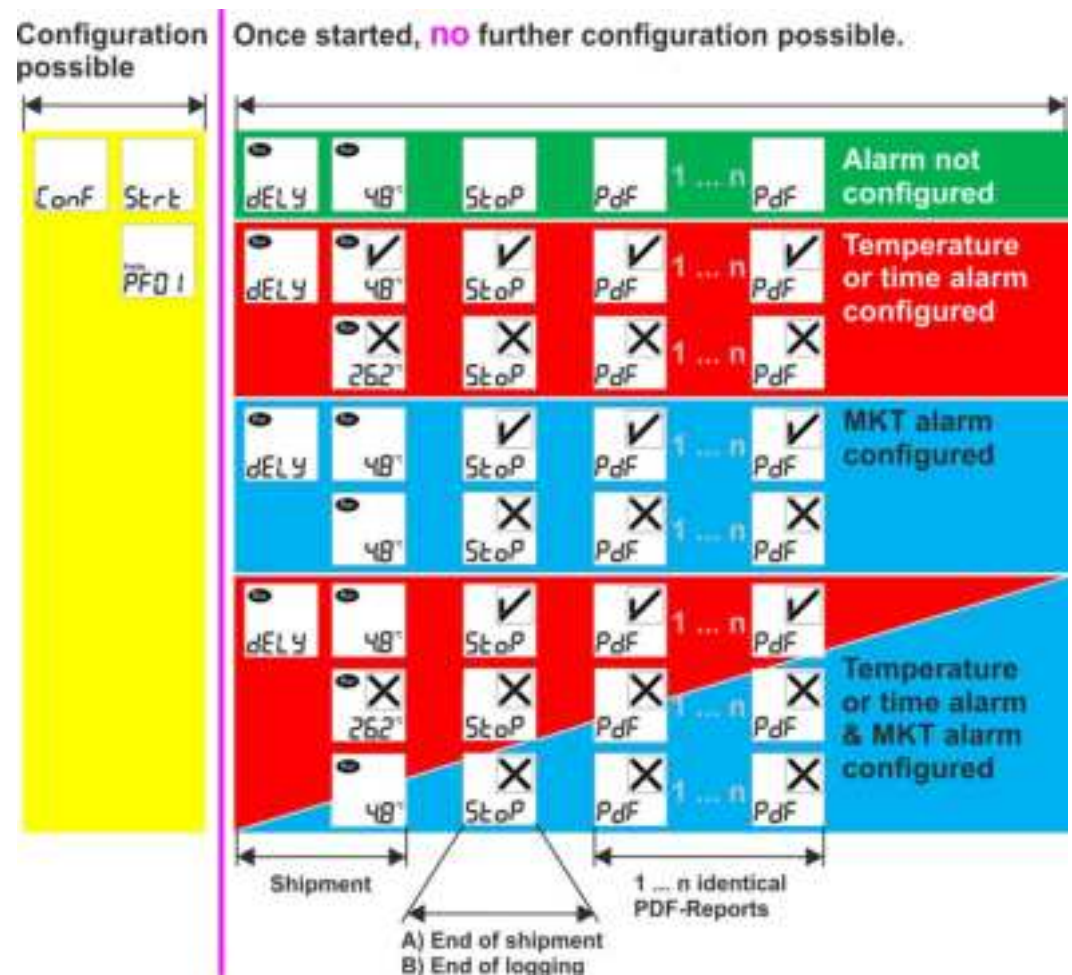
- Windows XP, 7 or 8
- CPU 1.5GHz
- Memory: 512 MB RAM
- Free hard disk space: 100 MB
- Monitor: 800 x 600 Pixel



Information on the latest functions is given in the "ReadMe" file.

3.2

Status information LIBERO Cx display



LIBERO Cx Display

A) End of transport
B) End of logging

If the end of transport is marked with the Start/Stop button, the LIBERO Cx logs the data until connection to a USB port. This data does not have any influence on the status information in the PDF report, but can be evaluated with elproVIEWER.

If the end of transport is marked by connection to a USB port, no more data is logged.

Depiction of an alarm
or error message



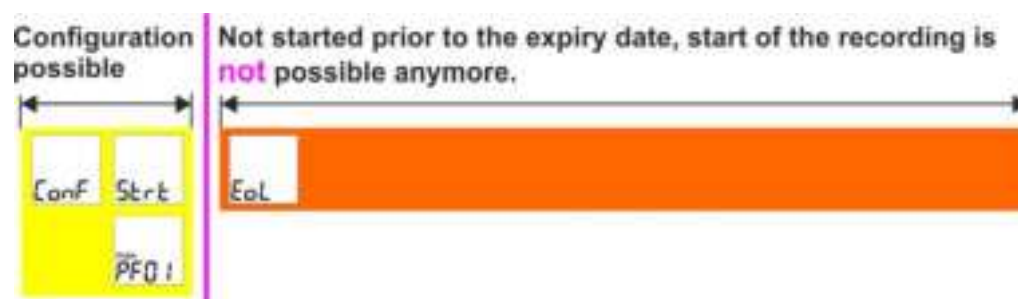
Alarm indicator

⇒ 3.3 Start of liberoCONFIG

⇒ 3.4.3 Alarm conditions

3.2.1

EoL - End of Life

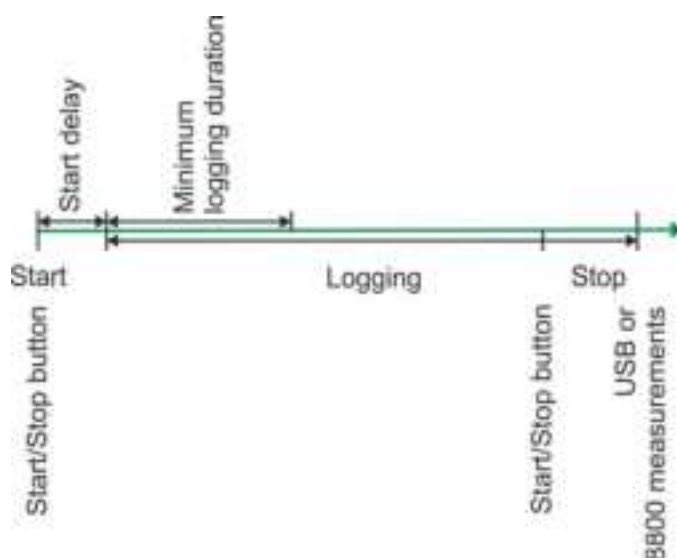


LIBERO Cx Display "EoL"

If the LIBERO Cx is started before the expiry date, it continues logging until it is stopped, the battery is exhausted or the memory is full. Logged data is available even the battery is exhausted.

After the expiry date, a LIBERO Cx may not be started again.

3.2.2 Schedule: Start to stop of logging



LIBERO Cx - Start/stop time

⇒ 3.4.2 *Logging - Start options*

⇒ 3.4.6 *Handling Options - Stop options*

3

3.2.3 Error codes



Exxx

Exxx

In the event of device errors, an alarm indicator and the error code are displayed. The error is documented in the PDF report. In such a case please contact the ELPRO Customer Service.

⇒ 3.4.5.1 *Status information and error messages in the PDF report*

- Logging status is not changed
 - PDF report evaluation is possible
 - Displayed error code remains visible
-
- Configuration data are invalid
 - Start is not possible
 - Error is deleted after a valid configuration

E210

3.2.4

Configuration mode

The configuration mode is used to set or change all logging features (profile). liberoCONFIG is used for these settings.

Configuration is only possible if "ConF", "Strt" or the Profile-ID is displayed.

⇒ 3.4.2 *Logging*

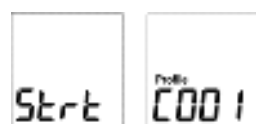
⇒ 3.4.3 *Alarm conditions*

Display: New LIBERO Cx



Unconfigured LIBERO Cx show "ConF" on the display.

Display: Configured LIBERO Cx



Either "Strt" or the Profile-ID is shown on a configured but not started LIBERO Cx.

Start configuration



As soon as the LIBERO Cx is connected to the USB port, it switches to configuration mode.

⇒ Continue with 3.4 *Configuring the LIBERO Cx*

Configuration completed



After configuration remove the LIBERO Cx from the USB port.

Either "Strt" or the Profile-ID is shown on the display.

Communication error



THE FOLLOWING CASES COULD CAUSE COMMUNICATION PROBLEMS:

- **Bad USB extension cable**
- **Passive USB hub. Please use an active USB hub or connect the LIBERO Cx directly to the PC.**

3.3 Start of liberoCONFIG

In this view, all available LIBEROs are visible.



Start window of liberoCONFIG with 3 LIBERO Cx

The following information is shown

- LIBERO ID
- Type
- Firmware Version
- Expiry date

3

Single / multiple device selection





Except "Edit configuration", all functions described in the following chapters can be applied to multiple LIBERO Cx selected at the same time.



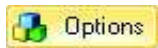
A LIBERO CX IN STOP MODE DOES NOT APPEAR IN THE START WINDOW!

Application



-  Refresh
 Refreshes the start window of liberoCONFIG
-  Edit configuration
 ⇒ 3 *Configuration of a LIBERO Cx*
-  LIBERO SmartStart
 ⇒ 3.8 *LIBERO SmartStart settings*
-  Check the PDF file integrity
 ⇒ 3.7 *Check PDF Report Integrity*

First-time use



Before using liberoCONFIG for the first time make the following settings:

- Language
 - Default file locations
 - Password length
 - Specify the paper format for the reports
- ⇒ 3.3.1 *Options*



Shows the information about the current program version and license number.

3.3.1 Options

In "Options" various general program settings can be made.

3.3.1.1 General Settings



Options - General settings

3

Language

- German
- English
- Spanish
- French
- Italian
- Dutch

Default File Locations

3 different file locations may be defined or selected:

- ⇒ For the configuration profiles see 3.4 *Configuring the LIBERO Cx*
- ⇒ Calibration Profiles

It is not possible to assign a calibration profile to a LIBERO Cx, see 3.6 *Calibration - View/Print*.

- ⇒ 3.8 *LIBERO SmartStart settings*

3.3.1.2

Additional Settings



Options - Additional Settings

Parameters

Data entry field used for the definition of the minimum password length.

View & Print Template for Calibration Data



- Not available for LIBERO Cx.
- Settings only apply for LIBERO Tx.

Paper Size

You may choose between A4 and Letter.

3.3.2

Menus

Chapter



3.4 *Configuring the LIBERO Cx*



3.5 *Passwords*



3.6 *Calibration - View/Print*



3.7 *Check PDF Report Integrity*

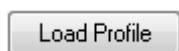
3.8 *LIBERO SmartStart settings*

3

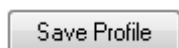
3.3.3

Buttons

The following buttons are used within liberoCONFIG:



- Load Profile
Used to open a formerly saved profile for setting-up LIBERO Cx.



- Save Profile
Used to save a new profile in a file

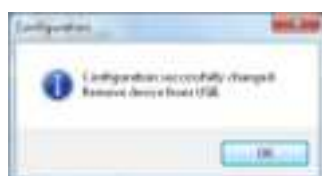


- Apply
The currently displayed configuration settings are transferred to the LIBERO Cx.

3.3.4

Confirmation

All successful actions are confirmed, e.g. configuration.



3.3.5

Configuration Profiles

A configuration profile represents all set-up information used by the selected LIBERO for a monitoring task and defined by liberoCONFIG such as:

- Description of the PDF report
- Logging interval
- Alarm settings
- Format settings
- Handling options

Configuration profiles saved as "****. LiberoCFG" files can either be applied to multiple LIBERO Cx or saved for later use.

Profile Checksum

4-11 Inverted: .Y
/M1 210 210

The checksum is used to prove the validity of the profile and as reference value for a configuration check. It is displayed in the "Configuration" window and is documented in the section "LIBERO Configuration" of the PDF report.

3.4

Configuring the LIBERO Cx

The following chapter represents a step-by-step procedure for the configuration.



LIBERO Cx selected for configuration

Menu: Edit - Device configuration



The following chapters (3.4.1 *Description* - 3.4.6 *Handling Options*) are related to the functions within the menu: Device.

LIBERO Cx Display

⇒ 3.2 Status information LIBERO Cx display



Configuration or creation of a configuration file (****.liberoCFG) is only possible if at least one LIBERO Cx is shown in the start window.

3.4.1

Description

Red frame = field with the profile checksum

Configuration Utility CS 302 720000000000

Description

LogPath
 Temperature Alarm
 RST and Duration Alarm
 Time Settings
 POP Options
 Handling Options

Description

Report Title: Enter one line of text (up to 80 char.) This will appear in Title of the report. Additional Information: Enter 6 fields of text (up to 15/25, 40/40, and 6 lines of text (up to 80 char./line). This will appear in the Additional Information section of the report. Additional Information: Enter two lines of text (up to 80 char./line). This will not be visible in the report, but will be available in the last data POP. Example: From: to: 01/01/2000 to: 01/01/2000. The location of the installed POP will also be visible in the "The Main Menu".

POP Report Data

L&L POP Segment Summary Report

Additional Information

| | | | |
|--------------|--------------|--------------|--------------|
| Field 1 (15) | Field 2 (25) | Field 3 (15) | Field 4 (15) |
| Field 5 (15) | Field 6 (25) | Field 7 (15) | Field 8 (25) |

Download DataCOM file from: www.sjpc.com
 and configure L&L POP with your own settings.

Additional Information (not visible in POP report)

HolderLine1 (80)
 HolderLine2 (80)

POP Report Name

L&L POP Report ☐ Add Alert Paths

Profile Description
 312-183-7272

Load Profile Save Profile Apply Cancel Help

PDF Report Title

Information used as a header on the PDF report; up to 60 characters

3

Additional Information

Free text that can be added to the profile to appear on the PDF report.

1. 4 text fields limited to 15 characters; fields 1, 3, 5 and 7
2. 4 text fields limited to 25 characters; fields 2, 4, 6 and 8
3. 6 lines of 80 characters

Hidden Information

Two lines with text (limited to 80 characters) that do not appear in the PDF report. This information is only visible in both applications elproVIEWER and liberoMANAGER.

PDF Report File-
name

Specified file name of the PDF report.

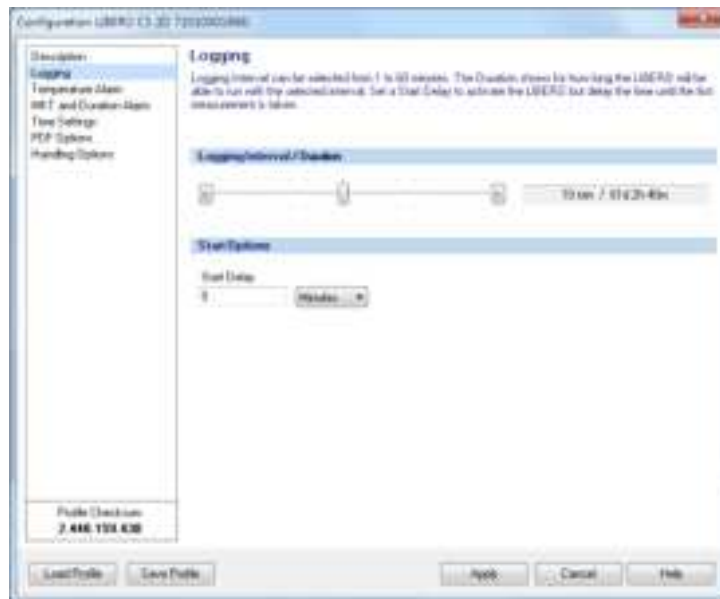
Add Alarm Prefix

Depending on the recorded data and the alarm conditions, "ALARM" or "OK" is added to the file name.

3.4.2

Logging

The logging interval and recording time will be displayed. You can adjust settings by clicking on the arrow buttons or by dragging the sliding bar.



Logging Interval / Duration

The measuring interval ranges from 1 to 60 minutes.



THE DISPLAY OF THE LIBERO CX IS ONLY UPDATED AT THE MEASURING INTERVAL.

3

Start Options



Start-up delay

After starting the LIBERO Cx by pressing the Start/Stop button, data logging only starts when the delay time has elapsed. "dELY" is shown on the display before logging is started and "Run" flashes.



Start delay = 0

After starting the LIBERO Cx by pressing the Start/Stop button, data logging starts immediately. The current measurement value is shown on the display and "Run" flashes.

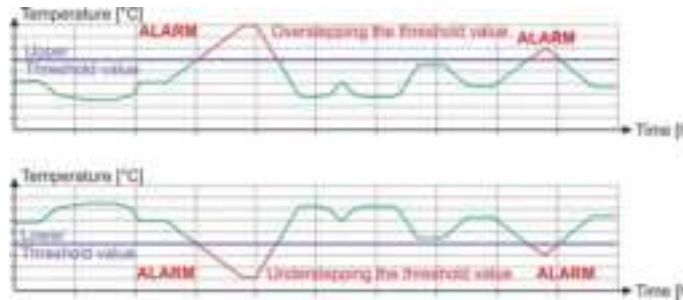
Logging can also be influenced with "Stop Options" as another parameter.

⇒ 3.4.6 Handling Options

3.4.3

Alarm conditions

Threshold violation



AN ALARM CANNOT BE RESET!

Alarm mode

- There are two different alarm modes:
 - Single alarm zone
 - Multi alarm zone
- The available alarm mode depends on the employed type of the *LIBERO Cx*.
- A checked box activates the alarm mode.

3



3.4.3.1

Single alarm zone, LIBERO CB

Only alarm zones H1 and L1 are available



| Zone | T (°C) | Alarm type | Event | Execution |
|------|--------|------------|--------|-----------|
| H1 | 40 | Warning | Single | Audio |
| L1 | 20 | Warning | Single | Audio |

Temperature alarm activated for LIBERO CB with single alarm zone

3.4.3.2

Multi alarm zones, LIBERO CS and CI

The function "Multi alarm zones" splits the alarm conditions in up to 8 independent zones; H1 - H4, G and L1 - L3. Zone G represents the temperature range in which none of the alarm conditions are fulfilled.

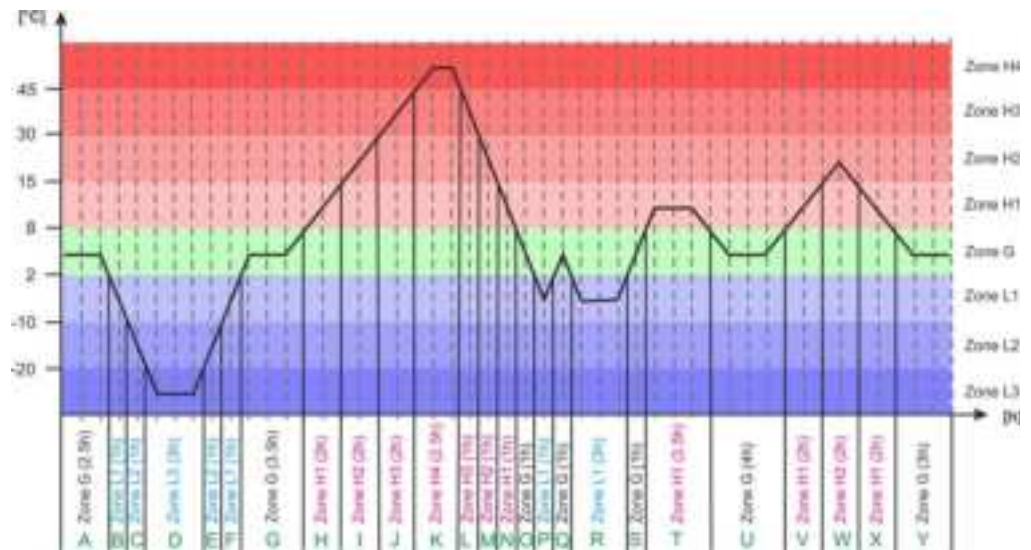


Temperature alarm activated for LIBERO CS, LIBERO CD and LIBERO CI with multi alarm zones

Alarm Zones

- Used
These check boxes are used to select the desired alarm zones.
- T[°C] or T[°F]
Data entry fields for the threshold values.
- Alarm after
An alarm is not triggered until the threshold violation has lasted longer than the specified time.
- Event
 - Single
The delay time restarts for each threshold violation.
 - Cumulative
An alarm will be triggered as soon as the elapsed time of all violations together has reached the delay time.
- Excursions
Accepted number of excursions, without respect to the set alarm delay time.
- Zone H1 + L1 coupled.
If this field is checked, the information entered for the alarm zone in H1 are used for both H1 overstepping and L1 understepping. (Total time and number of excursions overstepping and understepping).

Graphical Representation / Evaluation



Temperature plot with zones

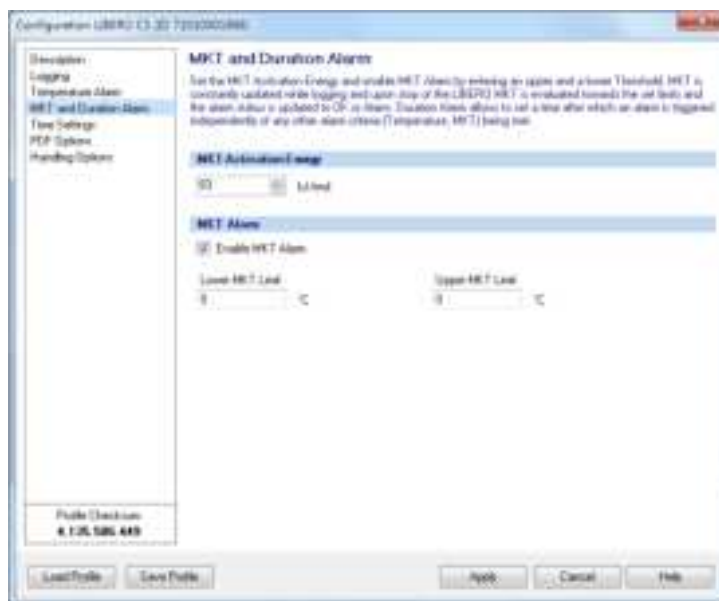
Data

| Zone | Temperature range [°C] | Alarm duration Add-up time [h] | Number of threshold violations | Plot section used for calculation |
|------|------------------------|-----------------------------------|--------------------------------|-----------------------------------|
| H4 | over 45 | 2.5 | 1 | K |
| H3 | over 30 | 5.5 | 3 | J+K+L |
| H2 | over 15 | 10.5 | 6 | I+J+K+L+M+W |
| H1 | over 8 | 21 | 11 | H+I+J+K+L+M+N+T+V+W+X |
| G | 2 to 8 | 16 | 7 | A+G+O+Q+S+U+Y |
| L1 | below 2 | 11 | 7 | B+C+D+E+F+P+R |
| L2 | below -10 | 5 | 3 | C+D+E |
| L3 | below -20 | 3 | 1 | D |

3.4.3.3

MKT Alarm

MKT Mean Kinetic Temperature



MKT alarm and duration alarm



Only the section "MKT Alarm" is shown on this screen. For the maximum duration see 3.4.3.4 Duration Alarm

3

MKT Activation Energy

Possibility to enter a product specific value for the MKT activation energy between 42.... 125 kJ/mol. (standard value: 83 kJ/mol.)

MKT Alarm



- Enable MKT alarm
A checked box activates the alarm mode.
- Lower MKT Limit
Data entry field for the threshold value.
- Upper MKT Limit
Data entry field for the threshold value.

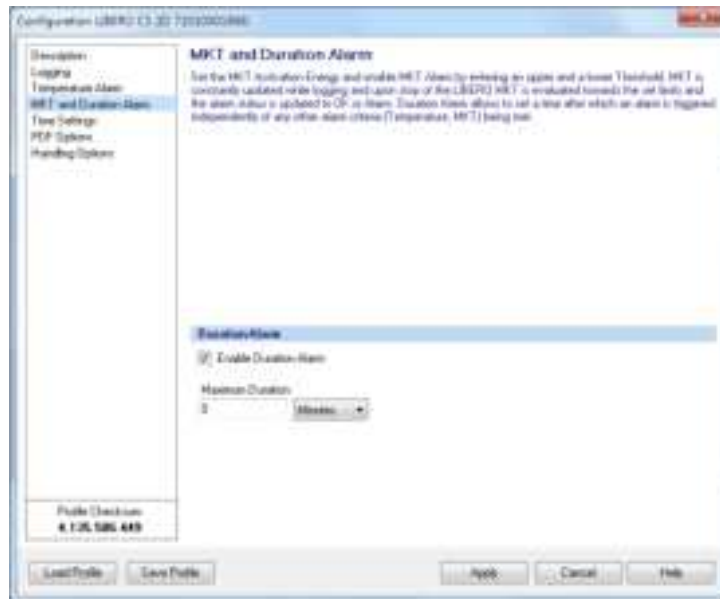


As a reference value for the lower MKT threshold we recommend 0 °C. This entry only serves to complete the general specifications for threshold values (min. - max. value).

3.4.3.4

Duration Alarm

Logging time



MKT alarm and duration alarm

3



Only the section "Duration Alarm" is shown on this screen. For MKT see 3.4.3.3 MKT Alarm

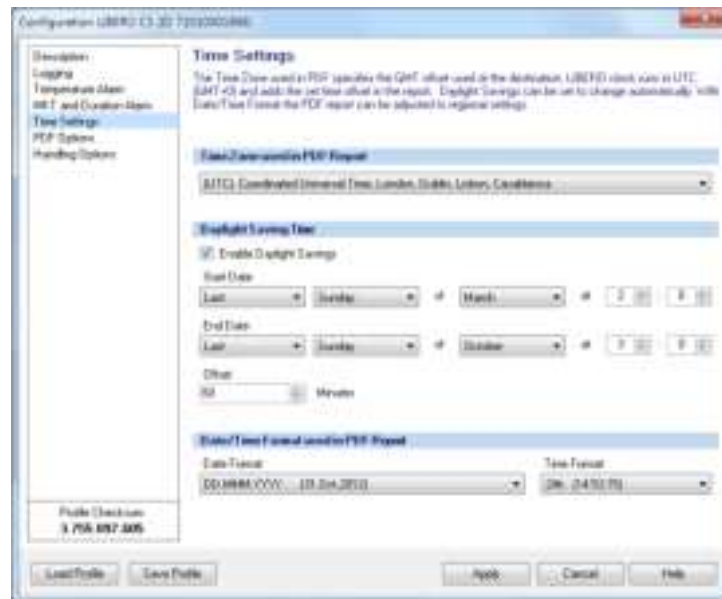
Duration Alarm



- A checked box activates the alarm mode.
An alarm is triggered if the logging time oversteps this value.
- Maximum Duration
Data entry field for the threshold value.
Maximum possible alarm duration = logging interval * 8800 measurements

3.4.4 Time settings

Country-specific settings.



Time Zone used in PDF Report

Represents the time zone used in the PDF report. This setting is based on UTC.

Daylight Saving Time



A checked box activates switchover between daylight saving time and winter time.

Data input fields for:

- Start date
- End date
- Offset (difference between daylight saving time and winter time)

Default setting

UTC

Date/Time format used in PDF Report

Choose format settings for date and time.

Default setting

DD.MM.YYYY (31.Oct.2012)

3.4.5

PDF Options

Selection of the information contained in the PDF Report



Y-Axis Scaling of Chart in PDF Report

- Automatically Zoom
The Y-axis will automatically be scaled according to the range of the measured values.
- Use Preset Zoom
The Y-axis will be scaled according to the lower and upper threshold values.

PDF Report Customizing



The following customizing options are activated by a checked box.

- Hide alarm conditions in the PDF report
- Hide the alarm status in the PDF report
- Hide logging results in the PDF report
- Hide the chart in the PDF report
- Hide the alarm indicator in the PDF report

Measurement Value Format used in PDF Report

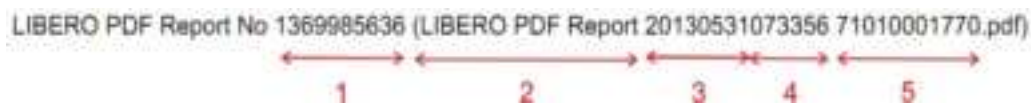
Selection of various display formats for

- Temperature unit °C or °F
- Decimal separator: xx.yy (point) or xx,yy (comma) status information

3.4.5.1

Status information and error messages in the PDF report

File name



1. Unique PDF report number comprising the device ID and the timestamp of the PDF report
2. File name specified for the PDF report during configuration
3. Date of report creation
4. Time of report creation
5. Device ID

Logging Results - File created

This timestamp corresponds to the time at which the LIBERO Cx was connected to a USB interface for the first time.

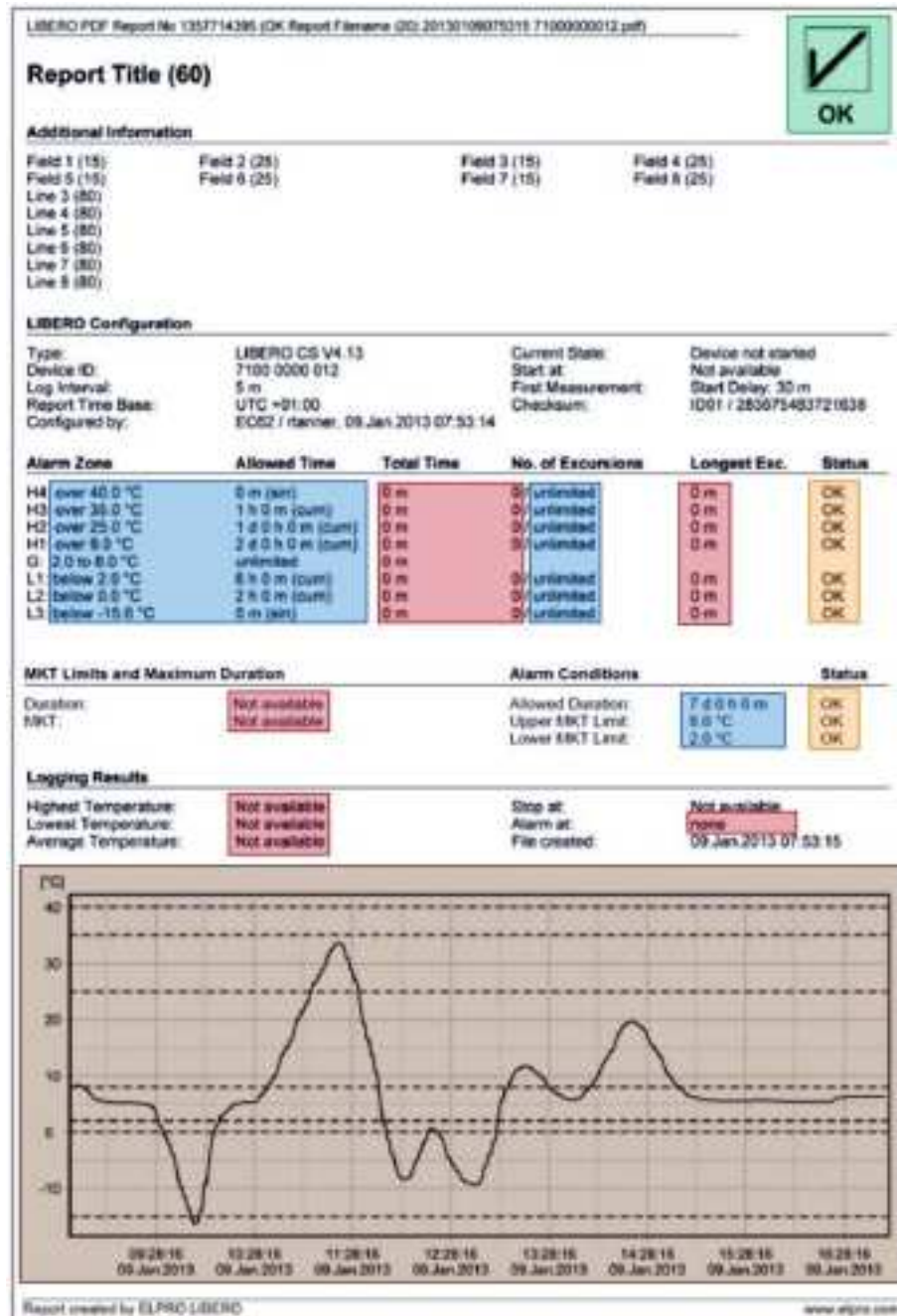
WARNING: Device Error EXXX

In the event of an error or if the data are not complete, a warning is given with an error code above the graph.



3.4.5.2

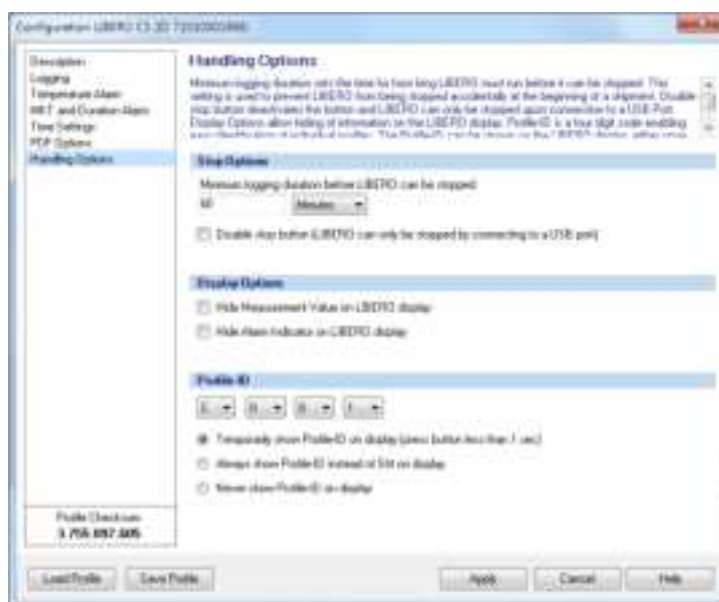
Example: PDF report



- Hide alarm conditions in the PDF report
- Hide the alarm status in the PDF report
- Hide the alarm indicator in the PDF report
- Hide logging results in the PDF report
- Hide the chart in the PDF report (Only LIBERO CS and CB)

3.4.6 Handling Options

Are used to specify the button functionality, the data shown on the display and the specified Profile-ID.



Stop Options

- Minimum logging duration
Enter the minimum logging time. During this time the, LIBERO Cx cannot be stopped with the Start/Stop button or by connecting it to a USB interface.
- Disable stop button
When the box is checked, logging can only be stopped by connecting to a USB port.

3

Display Options



By checking the box it is possible to:



- Hide the measurement value on the LIBERO Cx display



- Hide the alarm indicator on the LIBERO Cx display

235 °C

Profile-ID

- 4 selection windows for defining the Profile-ID



The character set for the Profile-ID is restricted to the display capability.

- 3 display options for the Profile-ID
Different views are shown on the LIBERO Cx display depending on the selected option.
 - Temporarily show the Profile-ID on the display
The Profile-ID is displayed by briefly pressing the Start/Stop button (less than 1 second)
 - Always show Profile-ID instead of "Strt"
 - Never show the Profile-ID



Default setting

C001

3.4.7

Apply Configuration Profile

All selected LIBERO Cx are directly assigned a previously saved profile.



3

3.4.8

View/Print configuration

Creates a report with all configuration data. This report contains as many pages as LIBERO Cx selected.



3.4.8.1

Example: Configuration report



Menu bar

LIBERO Configuration Report

| | | | |
|---------------------------|--|-------------------------|---------------------|
| Profile Checksum: | 2.058.027.152 | Configuration Password: | No |
| Profile-ID: | dEm | Data Access Password: | No |
| Type: | LIBERO CS (V4.13) | Expiry Date: | 06/2014 |
| Logger ID: | 7101.0001.868 | Start Delay: | 10 m |
| Log Interval / Duration: | 10 min / 61d 2h 40m | | |
| Configured by: | CL361, EC82/agubler 02.07.2013 13:38:19 (UTC) | | |
| Report Title: | Your LIBERO CS Sample PDF Report | | |
| Info Field 1-4: | | | |
| Info Field 5-8: | | | |
| Info Line 3: | The LIBERO C portfolio includes a Multi-Level PDF Logger, a Multi-Level | | |
| Info Line 4: | PDF Indicator and a PDF Logger with upper and lower alarm thresholds. | | |
| Info Line 5: | Besides many innovative features such as secure Start/Stop button, minimum | | |
| Info Line 6: | logging time before LIBERO can be stopped or auto copy functionality, all | | |
| Info Line 7: | LIBERO C models can alarm based on duration or MKT. | | |
| Info Line 8: | This is a sample only, download liberoCONFIG and create your own settings. | | |
| Hidden Line 1: | | | |
| Hidden Line 2: | | | |
| Filename: | LIBERO CS Demo PDF Report | | |
| Temperature: | Allowed Time: | Event Mode: | Allowed Excursions: |
| H4: over 50,0 °C | 0 m | Single | 0 |
| H3: over 40,0 °C | 4,0 h | Cumulative | 5 |
| H2: over 30,0 °C | 5,0 d | Cumulative | 10 |
| H1: over 25,0 °C | 10,0 d | Cumulative | unlimited |
| G: 2,0 °C to 25,0 °C | unlimited | | |
| L1: below 2,0 °C | 48,0 h | Cumulative | unlimited |
| L2: below 0,0 °C | 30 m | Single | 1 |
| L3: below -5,0 °C | 0 m | Single | 0 |
| Zone 3+5 coupled: | No | | |
| MKT Alarm Enabled: | No | MKT Activation Energy: | 83 kJ/mol |
| Duration Alarm Enabled: | No | | |
| Time Zone: | UTC +00:00 | Daylight Saving Time: | No |
| Date Format: | DD.MM.YYYY | Time Format: | 24h |
| Temperature Unit: | °C | Decimal Separator: | .(Point) |
| Y-Axis Scaling of Chart: | Automatically Zoom | | |
| Hide Alarm Conditions: | No | Hide Alarm Status: | No |
| Hide Chart: | No | Hide Alarm Indicator: | No |
| Hide Logging Results: | Yes | | |
| Minimum Logging Duration: | 10 m | Stop Button Disabled: | No |
| Display Hide Indicator: | No | Profile-ID on Display: | By button |
| Display Hide Menu: | No | | |

Printed: liberoCONFIG 2013.8.1.0 / agubler / 03.07.2013

3.5

Passwords



LIBERO Cx uses 2 different password functions. Both passwords can be set, changed and reset as long as the LIBERO Cx has not been started.

- Configuration password

Is used to protect the LIBERO Cx against unauthorized configuration changes.

- Data access password

If a data access password is set, the data of the PDF report can only be evaluated if the password is known.

Set/Change



If "New Password" & "Retype new Password" are left blank, the password will be reset.

3

Reset



If you have forgotten the password:

1. To reset the password the displayed "Request-Code" and the ID number has to be mailed to ELPRO-BUCHS AG (password-reset@elpro.com).
2. ELPRO-BUCHS AG will send the "Reset Code" by e-mail after clarifying ownership.



Calculation of the "Reset Code" is only possible at ELPRO-BUCHS AG. This code is just valid for the respective LIBERO Cx.

3.6

Calibration - View/Print



Creates a validation certificate for all selected LIBERO Cx. This contains as many pages as LIBERO Cx selected.

Example: Validation certificate



Menu bar



Validation Certificate

Certificate Number: VC-71010001868

Device Type: LIBERO CS
 Device ID: 7101 0001 868
 Device Revision: 4.13
 Expiry date: End of 06/2014

ELPRO performs a 100% temperature calibration of all sensors plus a 100% electrical calibration during assembling. With an additional rolling "Lot Acceptance Test" based on the daily production, the measurement accuracy and device functionality is verified and documented. ELPRO-BUCHS AG certifies that the LIBERO mentioned above has been manufactured according to ELPRO's Quality Assurance procedures and has passed the following tests:

| Test | Test and method | Acceptance criteria | Result |
|--|---|---------------------|--------|
| Temperature calibration of sensor | Temperature calibration at 0 °C in liquid | ± 0.3 °C | passed |
| | Temperature calibration at 15 °C in liquid | ± 0.3 °C | passed |
| | Temperature calibration at 25 °C in liquid | ± 0.3 °C | passed |
| Electrical calibration of LIBERO during assembling | Electrical calibration at -3 °C | ± 0.2 °C | passed |
| | Electrical calibration at 25 °C | ± 0.2 °C | passed |
| "Lot Acceptance Test" | System calibration and functionality test at -10 °C in liquid | ± 1.0 °C | passed |
| | System calibration and functionality test at 0 °C in liquid | ± 0.5 °C | passed |
| | System calibration and functionality test at 25 °C in liquid | ± 0.5 °C | passed |

All used reference standards are certified by SCS (Swiss Calibration Service) and traceable to the national standard (equivalent to NIST, UKAS, OXDI).

All certificates for the used reference standards are on file at ELPRO-BUCHS-AG.

This is a non-signed document produced (and reproduced) by a validated system.

Page 1/1

3.7 Check PDF Report Integrity



The software liberoCONFIG has the capability to validate the integrity of the PDF report. If the files have passed, test results will be shown and can be printed or archived.

Procedure: LIBERO PDF Report Integrity

1. Select and open PDF files which should be checked.
2. Check PDF File
A report with the check results will be created. This report contains as many pages as LIBERO Cx selected.

3.7.1 Example: Check the PDF Report Integrity



Menu bar

Check LIBERO PDF File Integrity

Device

Logger ID: 71010001868
Type: LIBERO CS

PDF File

Report number: 1372767794
File created: 02.07.2013 12:23:14 (UTC +00:00)
File name: M:\Entwicklung\Dokumentation\Anleitungen\LI Libero\LIBERO C - Diverses\Testdateien\OK LIBERO CS Demo PDF Report 20130702122314 71010001868.pdf

Check Results

File content: Checked - OK
Embedded data: Checked - OK

Printed: liberoCONFIG 2013.6.1.0 / agubler / 02.07.2013

3.8

LIBERO SmartStart settings



*LIBERO SmartStart
Create and make set-
tings see 3.3.2 Menus
- Extras*

The LIBERO SmartStart application allows bulk configuration of multiple LIBERO Cx. End users can select from a list of possible pre-defined profiles and then have the option to add shipment-specific information that will later appear on the PDF report.

First, the "LIBERO SmartStart Settings" menu is used to select configuration profiles that have already been created and saved. An appropriate title and color are assigned to each profile for easier selection.

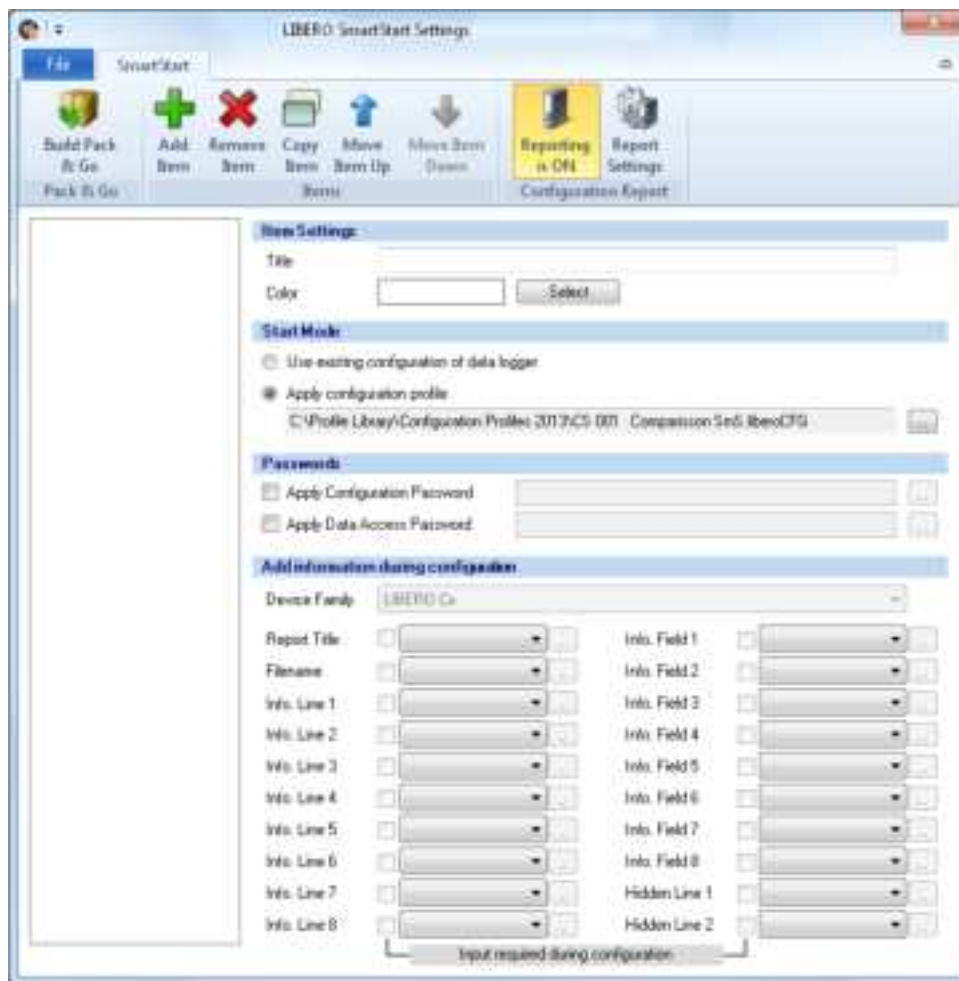
Then, the LIBERO SmartStart allows additional information fields to be defined so that shipment-specific information can be easily added (i.e. carrier, tracking number) and viewable on the PDF report. During the final programming process, information can be added either in the form of plain text or dropdown menu. All other critical device settings in the configuration profile, such as handling and alarm settings, are static and cannot be changed. After the initial settings are defined in the LIBERO SmartStart menu, a LIBERO SmartStart Pack & Go file (*.exe) file is created.

Another feature of the LIBERO SmartStart Pack & Go is an automatic report of the LIBERO ID, applied configuration profiles and the additional information that was entered. The automatic report is called the SmartStart Configuration Report (SSCR). The SSCR can be processed further and replaced error-prone manual listings of which LIBERO data logger (or indicator) is contained in which shipment.

*The basic configura-
tion process using
Pack & Go is as fol-
lows:*

1. Open the Pack & Go file
2. Select the appropriate configuration profile (by name and/or color)
3. Add shipment-specific information manually or from a drop-down menu

Start



LIBERO SmartStart Settings

- ⇒ 3.8.1 Items
- ⇒ 3.8.2 Configuration Report
- ⇒ 3.8.3 Create SmartStart Pack & Go

File



✕ Exit SmartStart Settings

⇒ Return to liberoCONFIG.

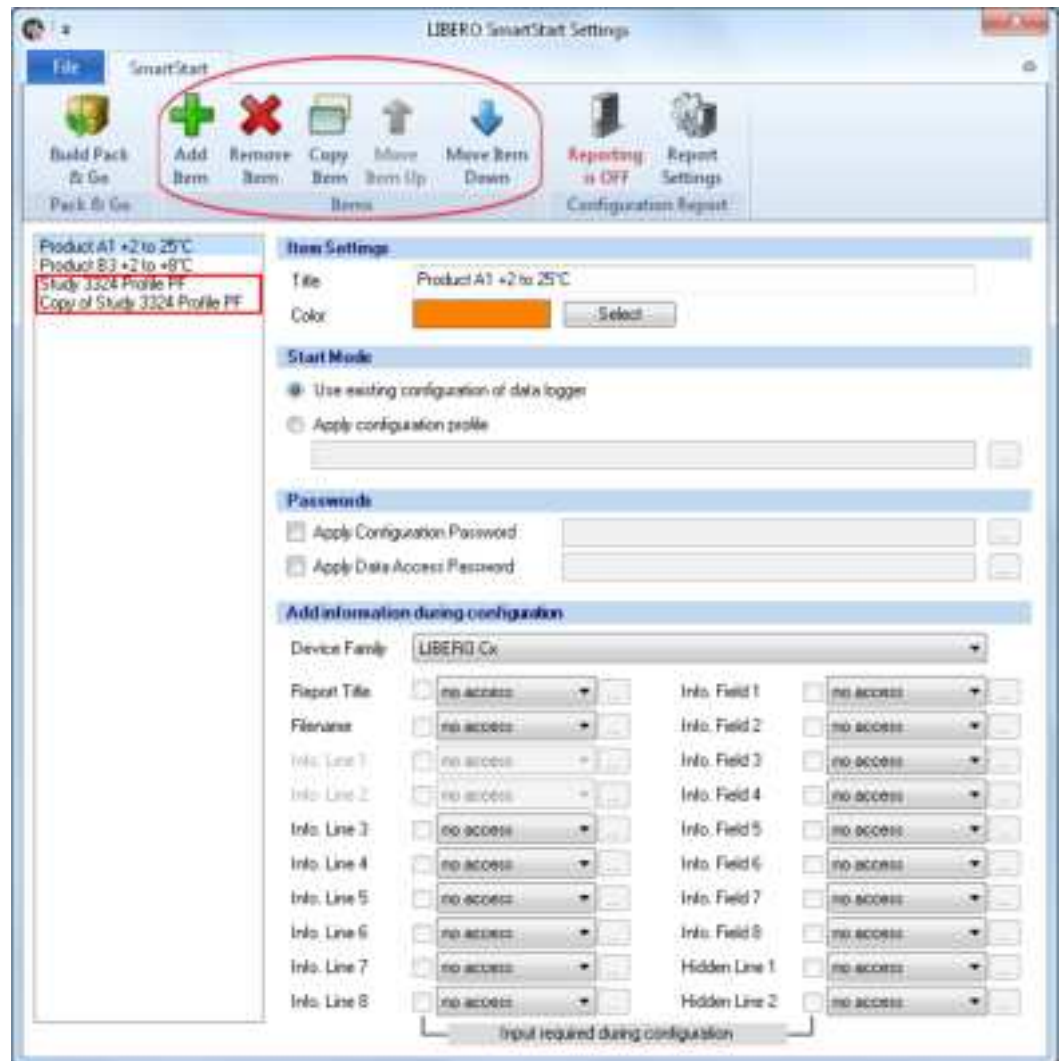
File format

****.liberoSMS

3.8.1

Items

Manage items



Overview: LIBERO SmartStart Settings

Icons



Use the "Items" function to add, modify or remove new items of the LIBERO SmartStart file. The new entry is added at the end of the list. Up to 500 LIBERO SmartStart items can be defined.

Typically one item is created per profile, product or study number.



Adds a copy of the selected items to the item list with the name: "Copy of xxxxx". This copy can be used as the basis for another item.



The respective input field is activated by checking the box.



This icon opens a window for the definition of the variable information.

Item settings

- Title

The title is the designation for the selected item. Enter a short, clear name.

- Color

Each item can be assigned a color. The color serves to identify the item quickly at a later point while working with LIBERO SmartStart.

Start mode

- Use existing data logger configuration

Is used if it is not necessary to assign a specific profile to the LIBERO Cx. The LIBERO Cx retains the current configuration.

- Apply configuration profile

A profile previously created with liberoCONFIG is used.



ONLY PROFILES FROM THE SAME LIBERO DEVICE FAMILY CAN BE ASSIGNED.

Passwords

Configuration and data access passwords can be entered. They will be automatically added to each LIBERO configured with LIBERO SmartStart.



- A checked box opens the window for entering the password.
- An empty field deletes the existing password.



Apply password

3.8.1.1

Add information during configuration

Device family

Manual or automatic recognition of the device family.

- When a configuration profile is assigned, LIBERO SmartStart automatically enables the available information options.
- If the existing LIBERO configuration is used, manually select which device family is used.

Add information during configuration

It is possible to make entries for all variable information of the PDF report during profile assignment.

3



no access:

There are no entries possible

If all entries are set to "no access", no entry prompts appear during profile assignment with SmartStart Pack & Go. In all other cases an entry window is opened to enter text with a barcode reader or with the keyboard.

add text

Entries can be added to the existing text.

edit text

The existing text can be supplemented and changed.

add dropdown

Opens the "Edit Dropdown" window for selection of predefined information. The existing line content is supplemented.

insert dropdown

Opens the "Edit Dropdown" window for selecting pre-defined information. The existing line content is always overwritten.

Commentary

--XXXXXXXXXX

Two minus signs in front of the text are treated as a comment in the dropdown and cannot be added or inserted in a mandatory field.



A checked box permits editing of the text in the "Dropdown" list during configuration.

Input required during configuration



Successful configuration is only possible when all activated fields are filled out.

3.8.2

Configuration Report



The configuration report is optional extra and not required for LIBERO SmartStart Pack & Go to function correctly.

If no automatic reporting of the configured LIBERO Cx is needed, skip this section and continue with 3.8.3 *Create SmartStart Pack & Go*.

3



Menu bar - configuration report

The configuration report documents all configurations done by LIBERO SmartStart. With the aid of the "Placeholder Editor" the used file name, path and the parameters documented may be customized.

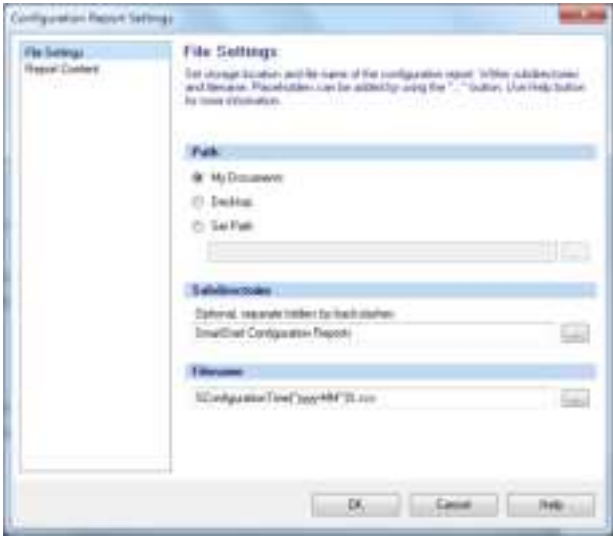
Reporting ON / OFF



Configuration report - ON

The logging of the actions in the configuration report is switched ON / OFF.

3.8.2.1 Report Settings



File settings

Path Default setting for saving the configuration report.

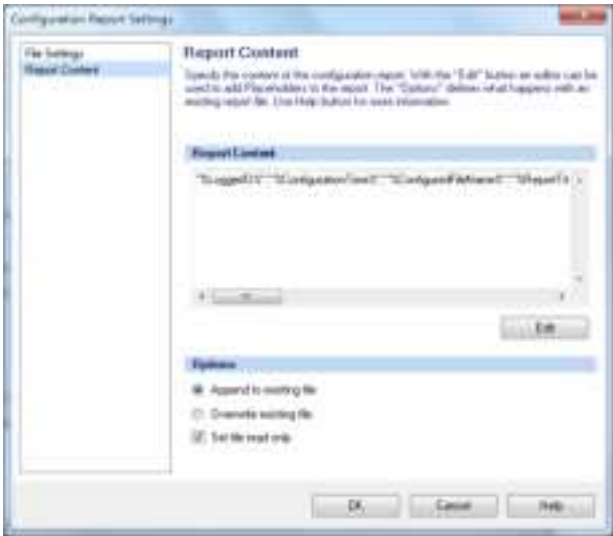
Subdirectories
Filename



This button is used to insert placeholders for the designation of subdirectories and file names.

3.8.2.2 Report Content

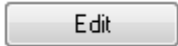
This window is used to define the placeholders and the formats used to create the report.



Report Content

Options

The current report can be added as an extension to the existing one or the existing report replaced by the new one.



This button starts the „Placeholder Editor“. The selected placeholders determine the content of the PDF report.

3.8.2.3

Placeholder Editor

Placeholders are expressions that appear as variable information in the report.

This is the syntax of the placeholder "DataloggerID" as shown in the window.

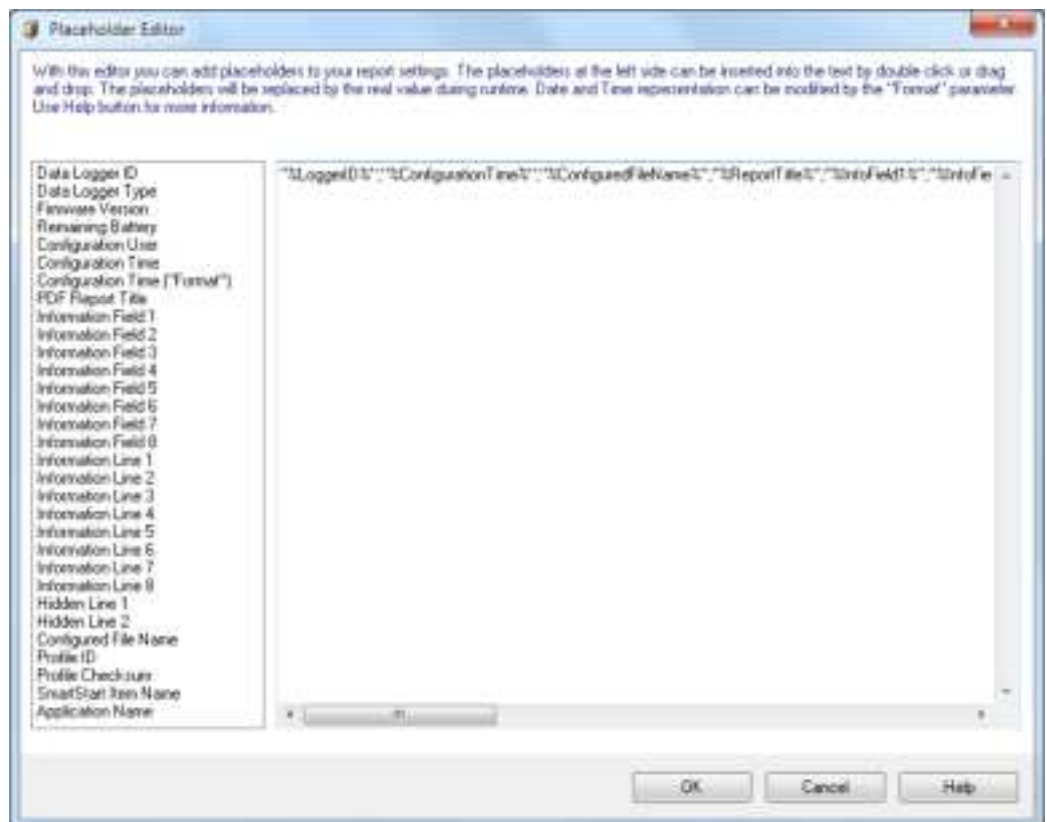
During the creation of the PDF report the placeholder is replaced by the current information, of the LIBERO configured with LIBERO SmartStart.

Example

Data logger ID

%Logger ID%

71010001789



| Description | Syntax | Function |
|-------------------------------|----------------------------------|--|
| Data Logger ID | %LoggerID% | ID of the data logger configured with SmartStart. |
| Data Logger Type | %LoggerType% | Type of the LIBERO Cx (CB, CD, CI, CS), configured with LIBERO SmartStart. |
| Firmware Version | %FirmwareVersion% | Firmware version of the LIBERO Cx configured with LIBERO SmartStart. |
| Remaining Battery | %RemainingBattery% | Current battery level of the LIBERO Cx at the time of configuration with SmartStart. |
| Configuration User | %ConfigurationBy% | Computer and user name |
| Configuration Time | %ConfigurationTime% | Point of time of the data logger configuration. Format settings according to regional settings of the computer. Time zone corresponds to PDF settings. |
| Configuration Time ("Format") | %Configuration-Time("Format")% | Time of the configuration of the LIBERO Cx with user-defined date-time format |
| PDF Report Title | %ReportTitle% | Title of the PDF report ⇒ 3.4.1 <i>Description</i> |
| Information Field 1 ... 8 | %InfoField1% ... %InfoField8% | Field 1 to 8 of the additional information in the PDF ⇒ 3.4.1 <i>Description</i> |
| Information Line 1 ... 8 | %InfoLine1% ... %InfoLine8% | Line 1 to 8 of the additional information in the PDF ⇒ 3.4.1 <i>Description</i> |
| Hidden Line 1... 2 | %HiddenLine1% %HiddenLine2% | Hidden line 1 to 2 of the additional information in the PDF ⇒ 3.4.1 <i>Description</i> |
| Configured File Name | %ConfiguredFile-Name% | Configured PDF file name ⇒ 3.4.1 <i>Description</i> |
| Profile-ID | %ProfileID% | User defined profile ID ⇒ <i>Profile-ID</i> |

| Description | Syntax | Function |
|----------------------|-----------------------|---|
| Profile Checksum | %ProfileChecksum% | Automatically calculated checksum |
| SmartStart Item Name | %SmartStartItem-Name% | Name of the selected LIBERO SmartStart item |
| Application Name | %ApplicationName% | Corresponds to the "Window Title" |
| | | ⇒ 3.8.3 Create SmartStart Pack & Go |

Placeholder: Configuration Time ("Format")

This placeholder allows a customized date and time format.

| Place- holder | Function |
|------------------|--|
| dd | Day with leading zero |
| MM | Month with leading zero |
| MMM | Shortcut month (Jan, Feb, Mar. ...) |
| MMMM | Name of month not abbreviated |
| yyyy | Year with four digits |
| hh | Time in 12-hour format with leading zero |
| HH | Time in 24-hour format with leading zero |
| mm | Minutes with leading zero |
| ss | Seconds with leading zero |
| tt | AM/PM designator |
| zzz | UTC Offset in format hh:mm |

Examples

("Format")

| | |
|----------------------|-----------------------|
| yyyy MMM dd hh:mm:ss | 2013 Jul. 17 16:23:12 |
| dd MMM. yyyy | 17 Jul. 2013 |
| yyyy-MM | 2013-07 |
| dd/MM/yyyy | 17/07/2013 |

3.8.2.4

Example of a configuration report

The following line numbers refer to the line of text in the "Placeholder Editor"

The used control characters quotation marks ("...") and semicolon (;) are interpreted according to the country settings of MS Excel. Depending on the country settings different characters for the described functions have to be used.

Notes

| Line | Description |
|------|---|
| 1 | Date and time configured with the placeholder: Configuration time ("Format") configured. |
| 2 | Text |
| 3 | <ul style="list-style-type: none"> Always use placeholder with quotation marks. In this case a semicolon (;) used within the text of the placeholder, will not be interpreted as column formatting. Semicolon (;) between placeholders are used for column formatting. Control characters have no effect on reports opened with an editor. |
| 4 | Entire line in quotes <ul style="list-style-type: none"> Text and parameters are not separated into different columns. Control characters have no effect on reports opened with an editor. |

Placeholder Editor examples

```

1) %ConfigurationTime% yyyy MM dd hh mm "%s"
2) %DateLogger Type and ID%
3) %DateLogger Type and ID% "%LoggedID%" %LoggerType%
4) %DateLogger Type and ID% "%LoggedID%" %LoggerType%

```

Report opened with MS Excel

| | A | B | C |
|----|---------------------------------------|----------|-------|
| 1) | 2011 Jan 19 01:23 | | |
| 2) | DateLogger Type and ID | | |
| 3) | DateLogger Type and ID | 16002844 | Tel-N |
| 4) | DateLogger Type and ID;16002844;Tel-N | | |

Report opened with an editor

```

% 2011 Jan 19 01:23
% DateLogger Type and ID
% "DateLogger Type and ID" "16002844" "Tel-N"
% "DateLogger Type and ID;16002844;Tel-N"

```

Example of a report

| | A | B | C | D | E | F |
|---|---------------------|------------|--------------------------|----------------------|------------------------|--------------|
| 1 | 18.01.2011 11:58 AM | 1°C/Sydney | 24°C non freeze products | Delivery Nr:12345678 | Shipping Box Nr: 010_2 | Buenos Aires |
| 2 | 18.01.2011 11:58 AM | 1°C/Sydney | 24°C may freeze products | Delivery Nr:12345679 | Shipping Box Nr: 120_5 | New York |
| 3 | 18.01.2011 11:57 AM | 1°C/Sydney | 15-25°C products | Delivery Nr:12345680 | Shipping Box Nr: 100_5 | Singapore |

3.8.3 Create SmartStart Pack & Go



Menu bar - Pack & Go

This is a function to set up an executable file of LIBERO SmartStart including all required settings and configuration profiles.

This file permits the configuration of a LIBERO Cx with a given profile, without any additional programs and without installation.

File format

(.exe)

Pack & Go runs:

- on any PC
- from a WEB, FTP or file server
- or from the Internet

3.8.3.1 SmartStart Pack & Go Settings

3



Settings

Program Window

- Window Title
Window title bar of the executable (.exe) file. This title can provide information such as: Service provider, location or version.
- Language
 - English
 - German
 - French
 - Italian
 - Spanish
 - Dutch

Pack & Go Security

- Start Password - only authorized staff is permitted to run SmartStart Pack & Go.
- Expiry Date - the program is going to run until this date only.

Workflow of Pack & Go

1. Define profiles and LIBERO SmartStart settings.
 - ⇒ 3.4 *Configuring the LIBERO Cx*
 - ⇒ 3.5 *Passwords*
2. Create an (.exe) file which includes the following information:
 - Defined profiles and LIBERO SmartStart settings
 - File name and title of the window
 - Optionally: Password and expiry date
3. Send the (.exe) file to the respective department.
4. The recipient runs the (.exe) file and configures the LIBEROs.
 - ⇒ 4 *Using SmartStart Pack & Go*



3.9

Help

Help

Used to search for a specific help topic.

4 Using SmartStart Pack & Go



When starting the SmartStart Pack & Go (.exe) file created with liberoCONFIG, a window with predefined settings appears. The window text and the respective color code is defined in the LIBERO SmartStart settings.

⇒ 3.8 LIBERO SmartStart settings

Mode

The LIBERO Cx must be in Conf or Strt mode!



The first item from the LIBERO SmartStart list is displayed, showing the assigned color and title.

4

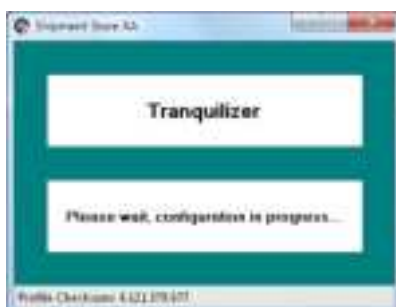
Profile Checksum 4421379477



THE PROFILE CHECKSUM CORRESPONDS TO THE PROFILE CHECKSUM OF THE CONFIGURATION!

⇒ 3.3.5 Configuration Profiles

Now the LIBERO can be plugged into the USB port.



SmartStart Pack & Go then automatically sends the selected profile to the LIBERO.



The image shows a 'SmartStart Configuration Data' window. It contains several sections: 'Report Title' with a text field 'Segment Data in Night US (to ELPRO)' and a red asterisk; 'Information Fields' with two columns of dropdown menus (1-6 and 7-8); 'Information Lines' with a list of lines (3-8) and a red asterisk; 'Warning Lines' with two lines of text and a red asterisk; and 'PDF Filename' with a text field 'SmartStart 2024' and a red asterisk. At the bottom, there is a checkbox 'Remember settings for next configuration' and 'Apply' and 'Cancel' buttons.

If LIBERO SmartStart allows input of additional information, a window will open. The information can be entered via the keyboard or barcode reader.

Key to entries

1. Edit text
 2. Add dropdown
 3. Insert dropdown
 4. Add text
- ⇒ 3.8.1 Items

4



Fields highlighted in gray cannot be edited.

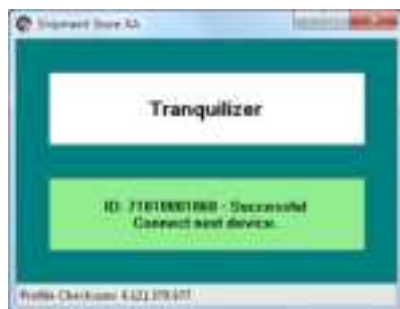
Missing variable

* Required information



Error message

When all entries have been made, the profile settings and the variable entries are sent to the LIBERO.

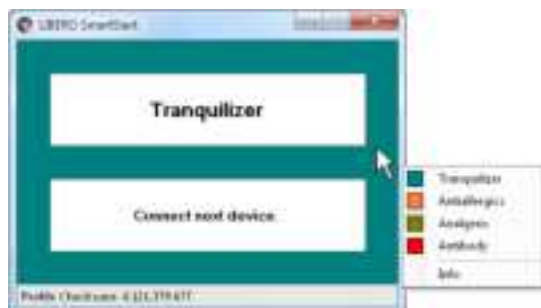


Now disconnect the LIBERO from the USB port and continue with the next LIBERO.

4.1

Change of Settings

A SmartStart Pack & Go can contain several items / profiles. Click the setting window with the right mouse button and select the right profile, for example: Antiallergics.



After changing the profile you can proceed with the next LIBERO.

4.2 Error Messages

In case of an error, a message will be displayed.



Reasons for error messages:

- Profile incompatible
- "Cancel" selected during data download
- LIBERO has been disconnected during configuration.

5.1 Software license

The software liberoCONFIG is available for downloading from the website www.elpro.com. The license key required for licensing is sent to you free of charge e-mail.

This license information is sent in the email:

```
=====
User name: xxxxxx xxxxxx
Company name: zzzzzz
serial number: yyyy-yyyy-yyyy
=====
```

1997-1998
 1999-2000
 2001-2002
 2003-2004
 2005-2006
 2007-2008
 2009-2010
 2011-2012
 2013-2014
 2015-2016
 2017-2018
 2019-2020
 2021-2022
 2023-2024
 2025-2026
 2027-2028
 2029-2030
 2031-2032
 2033-2034
 2035-2036
 2037-2038
 2039-2040
 2041-2042
 2043-2044
 2045-2046
 2047-2048
 2049-2050
 2051-2052
 2053-2054
 2055-2056
 2057-2058
 2059-2060
 2061-2062
 2063-2064
 2065-2066
 2067-2068
 2069-2070
 2071-2072
 2073-2074
 2075-2076
 2077-2078
 2079-2080
 2081-2082
 2083-2084
 2085-2086
 2087-2088
 2089-2090
 2091-2092
 2093-2094
 2095-2096
 2097-2098
 2099-2100
 2101-2102
 2103-2104
 2105-2106
 2107-2108
 2109-2110
 2111-2112
 2113-2114
 2115-2116
 2117-2118
 2119-2120
 2121-2122
 2123-2124
 2125-2126
 2127-2128
 2129-2130
 2131-2132
 2133-2134
 2135-2136
 2137-2138
 2139-2140
 2141-2142
 2143-2144
 2145-2146
 2147-2148
 2149-2150
 2151-2152
 2153-2154
 2155-2156
 2157-2158
 2159-2160
 2161-2162
 2163-2164
 2165-2166
 2167-2168
 2169-2170
 2171-2172
 2173-2174
 2175-2176
 2177-2178
 2179-2180
 2181-2182
 2183-2184
 2185-2186
 2187-2188
 2189-2190
 2191-2192
 2193-2194
 2195-2196
 2197-2198
 2199-2200
 2201-2202
 2203-2204
 2205-2206
 2207-2208
 2209-2210
 2211-2212
 2213-2214
 2215-2216
 2217-2218
 2219-2220
 2221-2222
 2223-2224
 2225-2226
 2227-2228
 2229-2230
 2231-2232
 2233-2234
 2235-2236
 2237-2238
 2239-2240
 2241-2242
 2243-2244
 2245-2246
 2247-2248
 2249-2250
 2251-2252
 2253-2254
 2255-2256
 2257-2258
 2259-2260
 2261-2262
 2263-2264
 2265-2266
 2267-2268
 2269-2270
 2271-2272
 2273-2274
 2275-2276
 2277-2278
 2279-2280
 2281-2282
 2283-2284
 2285-2286
 2287-2288
 2289-2290
 2291-2292
 2293-2294
 2295-2296
 2297-2298
 2299-2300
 2301-2302
 2303-2304
 2305-2306
 2307-2308
 2309-2310
 2311-2312
 2313-2314
 2315-2316
 2317-2318
 2319-2320
 2321-2322
 2323-2324
 2325-2326
 2327-2328
 2329-2330
 2331-2332
 2333-2334
 2335-2336
 2337-2338
 2339-2340
 2341-2342
 2343-2344
 2345-2346
 2347-2348
 2349-2350
 2351-2352
 2353-2354
 2355-2356
 2357-2358
 2359-2360
 2361-2362
 2363-2364
 2365-2366
 2367-2368
 2369-2370
 2371-2372
 2373-2374
 2375-2376
 2377-2378
 2379-2380
 2381-2382
 2383-2384
 2385-2386
 2387-2388
 2389-2390
 2391-2392
 2393-2394
 2395-2396
 2397-2398
 2399-2400
 2401-2402
 2403-2404
 2405-2406
 2407-2408
 2409-2410
 2411-2412
 2413-2414
 2415-2416
 2417-2418
 2419-2420
 2421-2422
 2423-2424
 2425-2426
 2427-2428
 2429-2430
 2431-2432
 2433-2434
 2435-2436
 2437-2438
 2439-2440
 2441-2442
 2443-2444
 2445-2446
 2447-2448
 2449-2450
 2451-2452
 2453-2454
 2455-2456
 2457-2458
 2459-2460
 2461-2462
 2463-2464
 2465-2466
 2467-2468
 2469-2470
 2471-2472
 2473-2474
 2475-2476
 2477-2478
 2479-2480
 2481-2482
 2483-2484
 2485-2486
 2487-2488
 2489-2490
 2491-2492
 2493-2494
 2495-2496
 2497-2498
 2499-2500
 2501-2502
 2503-2504
 2505-2506
 2507-2508
 2509-2510
 2511-2512
 2513-2514
 2515-2516
 2517-2518
 2519-2520
 2521-2522
 2523-2524
 2525-2526
 2527-2528
 2529-2530
 2531-2532
 2533-2534
 2535-2536
 2537-2538
 2539-2540
 2541-2542
 2543-2544
 2545-2546
 2547-2548
 2549-2550
 2551-2552
 2553-2554
 2555-2556
 2557-2558
 2559-2560
 2561-2562
 2563-2564
 2565-2566
 2567-2568
 2569-2570
 2571-2572
 2573-2574
 2575-2576
 2577-2578
 2579-2580
 258

bioactive compounds. Numerous studies have shown that the addition of γ -irradiation to a food system can enhance the activity of natural antioxidants and inhibit the growth of microorganisms. In this study, the γ -irradiation was used to enhance the activity of natural antioxidants in the food system.

The download link is also contained in the e-mail. The software can be downloaded up to twice with the supplied link. Re-registration is necessary afterwards.

5.2 ELPRO Customer Service Information

If you need any assistance from the ELPRO Customer Center, please make sure you can provide the following information:

- Software version; Select "Info" in the menu option "Application"
- Used LIBERO type
- PDF report of the LIBERO
- Which actions were carried out before the problem arose (exact description of the LIBERO handling: time, temperature, shock etc.)
- Specification of the error, error codes

5.3 Revision History

| Author | Date | Version | Description |
|--------|------------|---------|---|
| AG | 16/08/2013 | - | first edition |
| AG | 07/05/2015 | a | New functions for LIBERO Cx Firmware version 4.16 |
| AG | 08/09/2016 | b | LIBERO CD for dry ice shipments added |

Index

A

- Actions - confirmed 20
- Alarm duration 26, 28
- Alarm indicator 10
- Alarm mode 24, 25, 27
- Alarm reset 24
- Alarm zones 25
- Apply 20
- Available Liberos 16

B

- Battery 8, 10
- Buttons 20

C

- Calibration Certificate 37
- Case 10
- CE 9
- Checksum 21
- Color 44
- Configuration 52
- Configuration Mode 15
- Configuration password 36
- Configuration report 34
- Copy 44
- Cumulative events 25

D

- Data access password 36
- Date 50
- Daylight saving time 29
- Decimal separator 30
- Default file location 18
- Device 21
- Device error 14
- Device family 45
- Device selection 16
- Display 10
- Disposal 8

E

- Edit dropdown 45
- EMI 9
- EoL - End of Life 13
- Error message 14
- Exceptional environmental conditions 9
- Expiry date 10, 16, 53

F

- Factory settings 15
- File format 21, 42, 52
- File name 22, 31
- Format 19
- Format Measurement Value 30

I

- Indicator 7
- Indicators 13
- Influence of temperature 8, 11
- Information - hidden 22
- Infrared radiation 9
- Integrity 39

L

- Language 18
- License key 58
- Lifetime 16
- Lithium 8
- Load Profile 20
- Logger 7
- Logging 14
- Logging interval 23

M

- Mac OS 12
- Measuring value unit 25
- Menu bar - report 34
- Microwaves 9
- MKT activation energy 27
- MKT alarm 27
- Multi Alarm 25

P

- Pack & Go 53
- Pack & Go - settings 52
- Password 19, 36, 53
- Password length 19
- PDF file check 39
- PDF report 32, 45
- PDF/A - ISO standard 6
- Placeholder 49
- Placeholder Editor 51
- Prefix 22
- Profile 10, 20, 21
- Profile Checksum 22
- Profile default locations 18
- Profile ID 34
- Program version 17

R

Registration 58
Report 47
Report title 22
Request-Code 36
Reset code 36
Reset Password 36
Run 10

S

Save profile 20
Selection 44
Serial number 58
Single events 25
SmartStart 41
SmartStart - configuration 44
SmartStart - configuration report 46
SmartStart - items 44
SmartStart - Pack & Go 52
SmartStart - password 44
SmartStart - Placeholders 49, 50
SmartStart - report 51
Start 10
Start delay 23
Start options 14
Start/Stop button 10
Stop mode 13
Stop options 14
System requirements (PC) 12

T

Temperature unit 30
Threshold violation 24
Time 50
Time format 29
Time Zone 29
Title 44

U

UCT Coordinated Universal Time 29
USB-Port 15

V

Validation certificate 37
Violations 25

W

WEEE 8, 9

X

X-Ray 9

Y

Y-axis 30



ELPRO-BUCHS AG
Langäulistrasse 45
9470 Buchs
SWITZERLAND
email: swiss@elpro.com



For local representatives see:
www.elpro.com

