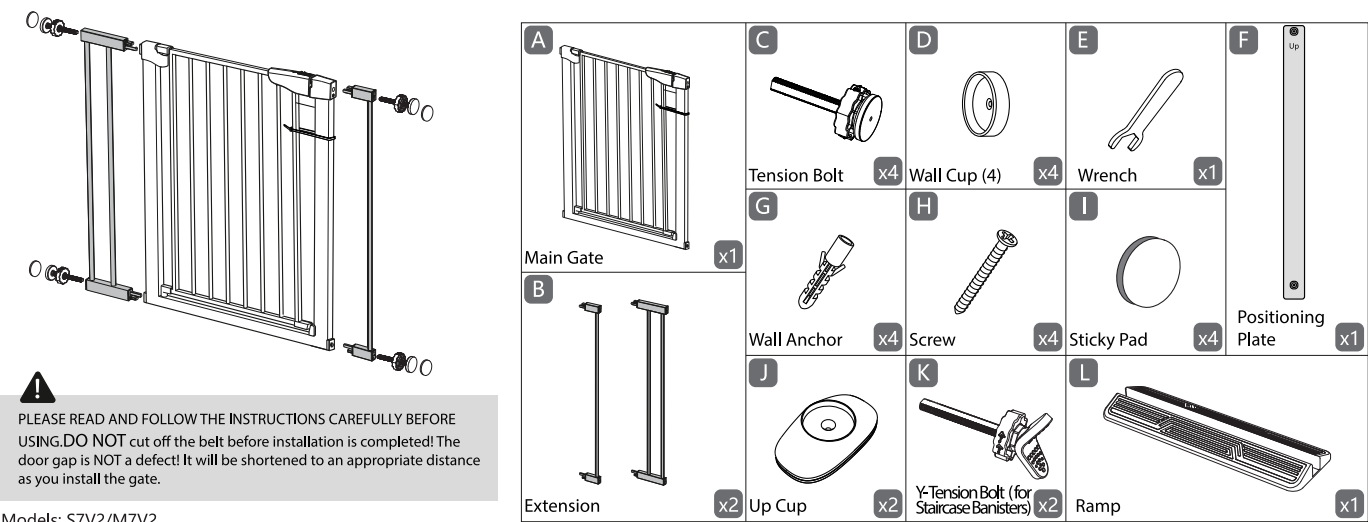
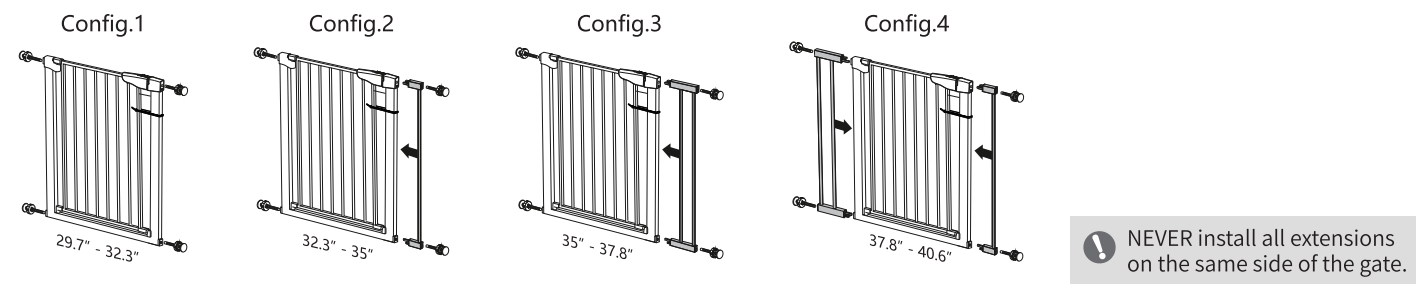


Cumbor

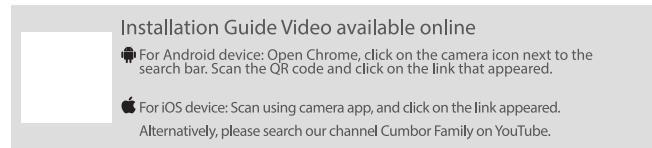
CONTENTS



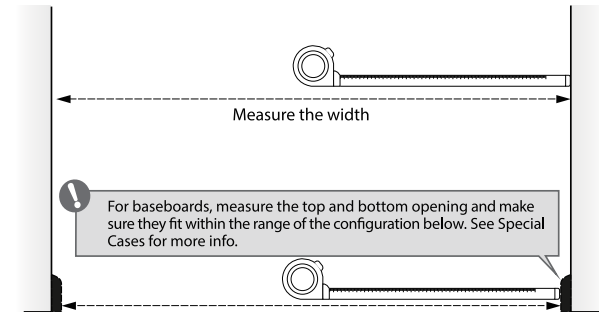
WIDTH OPTIONS



INSTALLATION



STEP 1 Measure Opening Width



STEP 2 Select Extension

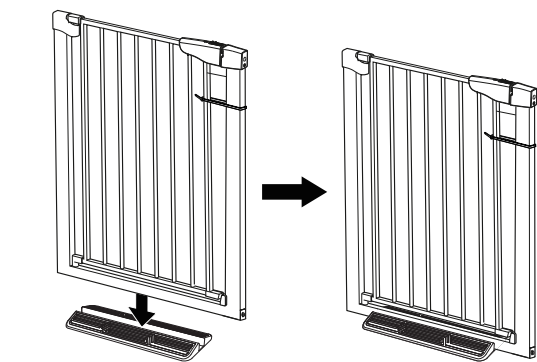
| | | | |
|---|---------------|---|---------------|
| 1 | 29.7" - 32.3" | 2 | 32.3" - 35" |
| 3 | 35" - 37.8" | 4 | 37.8" - 40.6" |

According to the opening size you measured, select the extension you need. See the section 'Width Options' above.

NOTE: The larger the number of extensions and the wider the expansion, the overall stability strength of the guardrail will be reduced, for your maximum safety, it is recommended to use the hardware installation.

STEP 3 Assembled ramp

Place the bottom crossbar of the safety gate in the ramp groove.



STEP 4 Choose the installation method

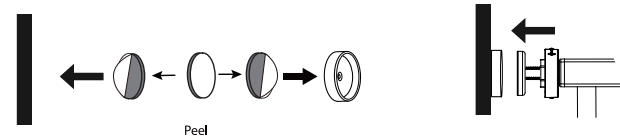
Depending on the use scenario and needs, different installation options are available:
A. Pressure-mounted installation (for areas with low safety hazard potential)
B. 3M Sticky Pad installation
C. Hardware-mounted (screws) installation

A. Pressure-mounted installation:

Install accessories C

B. 3M Sticky Pad- Installation:

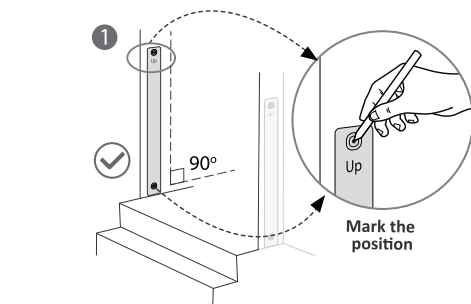
Install accessories C, D, I
Remove backing from one side of the sticky pad. Attach the pad to the Wall cups.



C. Hardware-mounted (screws) installation:

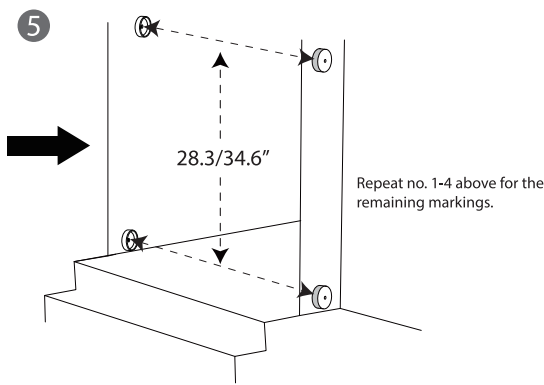
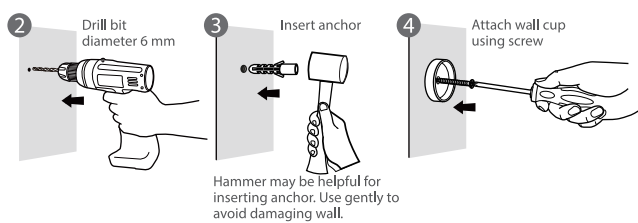
Install accessories C, D, G, F, H

(C.1) Use the positioning plate to mark the position of wall cups. Ensure the plate is upright.



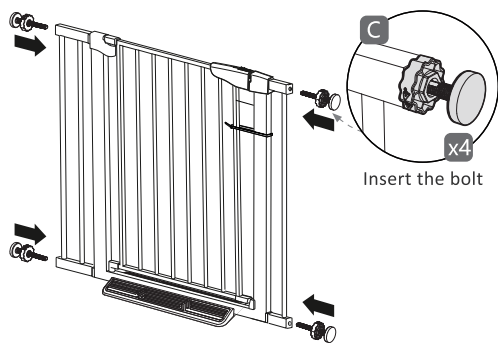
(C.2) Drill the marked points and attach wall cups using supplied anchors and screws.

This method is mandatory for installation at staircases or other areas with high safety hazard.



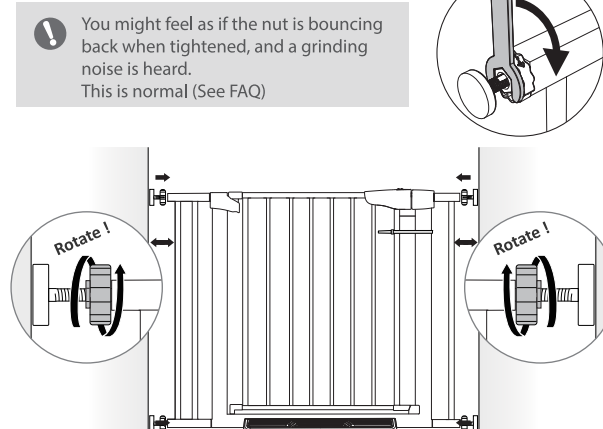
STEP 5 Install Tension Bolts

It is normal for the bolts be loose, as the holes are not threaded. (See FAQ)

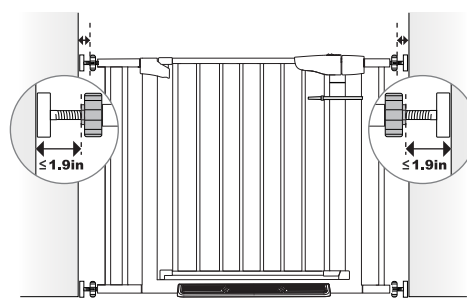


STEP 6 Tighten the Bolts and Complete Installation

6.1 Pull out the bolts at the left and right side at equal distance and rotate the nuts to tighten.

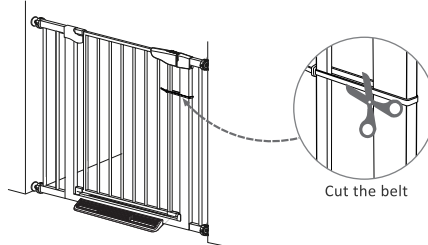


6.2 Make sure the left and right clearance between the gate and the wall is consistent, and the gate is perfectly upright (not skewed)

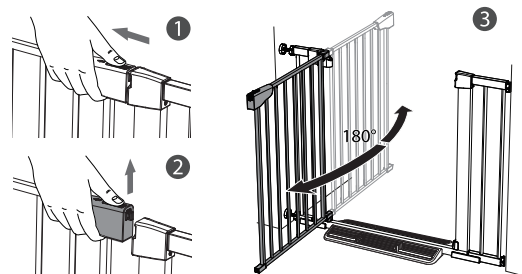


OPERATION

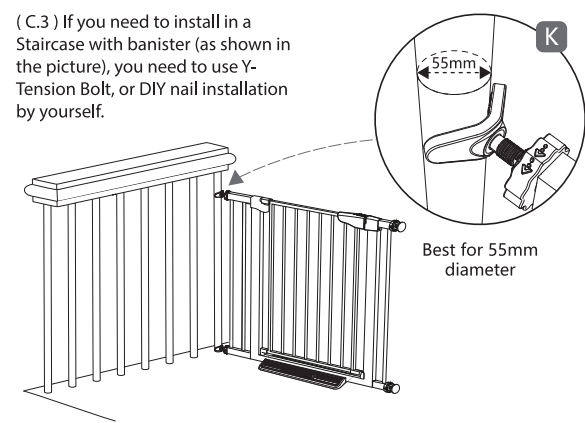
1. Cut off the belt.



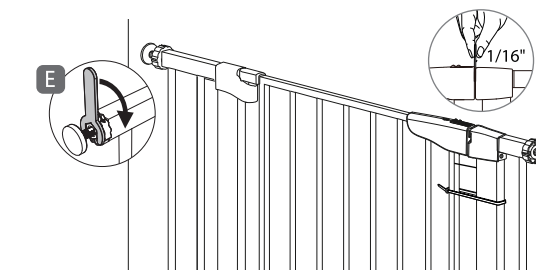
2. Open the gate by pulling back the switch and lifting up the door. (dual lock mechanism, see FAQ for more).



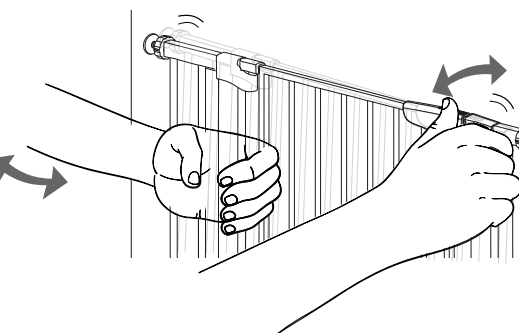
(C.3) If you need to install in a Staircase with banister (as shown in the picture), you need to use Y-Tension Bolt, or DIY nail installation by yourself.



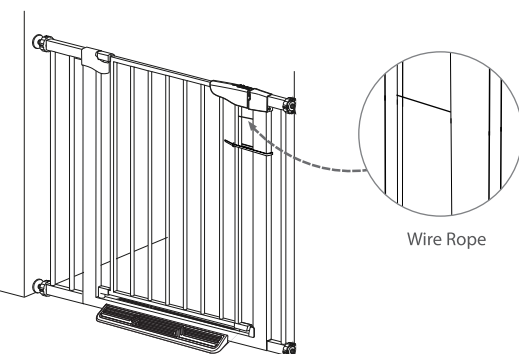
6.3 Use the supplied Wrench (E) to tighten the bolt further until the gap of the latch is 1/16" wide (roughly the thickness of the supplied wrench).



6.4 Test the gate by slightly shaking the gate firmly to check if the installation is secure and sturdy.



STEP 7 Remove the wire rope



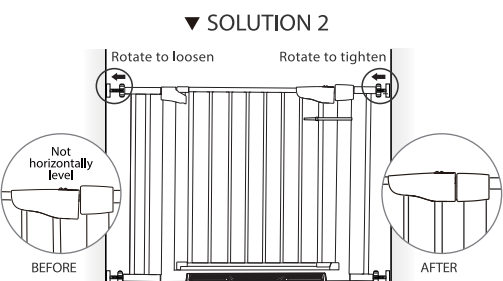
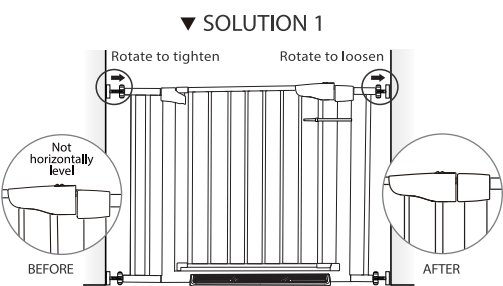
When the gate is installed correctly, the wire rope can be removed directly. When the wire rope cannot be removed, it means that it is necessary to tighten the tension bolt more.

❓ TROUBLESHOOTING

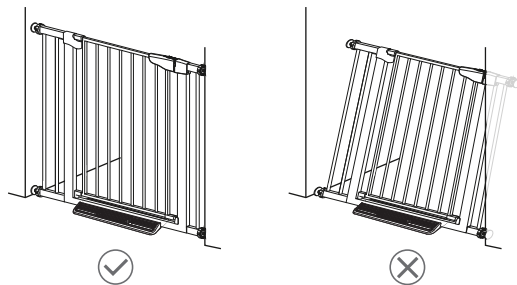
If the gate does not open or interact properly:

A. The gate is over-tightened or not tight enough.
Suitable clearance of the door gap is 1/16".(Please refer to step 6)

B. The latches are not level.
Solution:Adjust the tension bolts on each side of the door until it is centered and leveled, with equal distance between the gate and wall on both side, top and bottom.



C. Gate is not properly aligned onto the door frame.
Solution: Adjust the gate by loosening all tension bolts and repositioning the gate. Make sure the gate is properly aligned onto the door frame/door opening, then re-tighten tension bolts.



If you happen to cut the belt by accident or need to reinstall the gate elsewhere in the future:

Solution: Use another rope/belt to tie the guardrail before removing otherwise you may need the assistance of others to help you with installation it.

If you need to place it in a doorway that has baseboard:
Please see Special Cases.

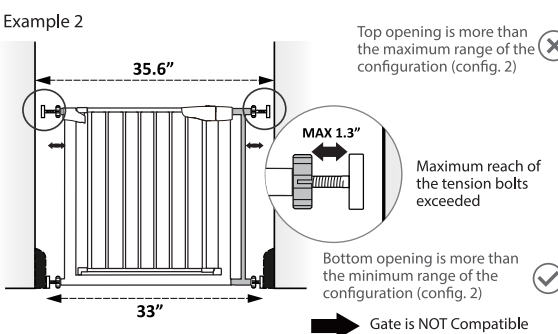
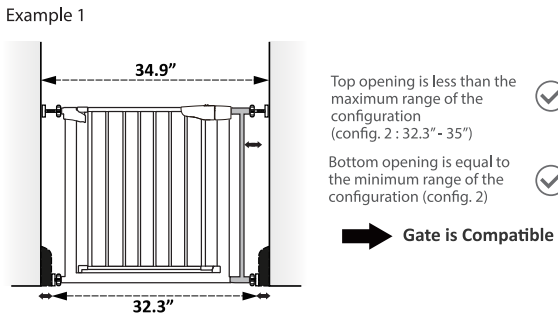
If the gate becomes loose on the wall:
Solution: Check if the gate is properly tightened (please refer to Step 6)

⚙️ SPECIAL CASES

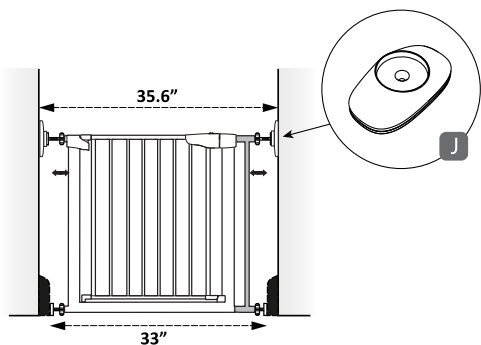
1 For Use with Baseboards

Check if your baseboard is compatible with the gate.

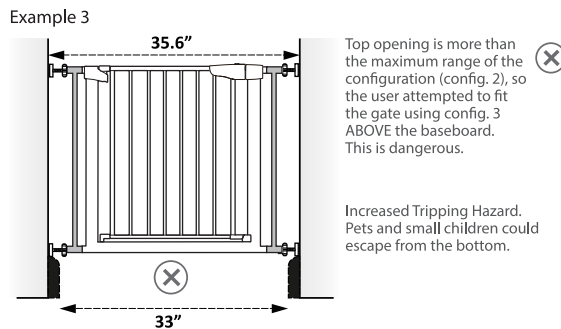
The gate is compatible when (1) the top opening is less than or equal to the maximum range of each configuration of extensions , AND (2) the bottom opening is greater than or equal to the minimum range of each configuration. When one of the two criterias are not met, the gate is not compatible. See examples below.



In this case, the supplied Up Cup (J) may be used to add the reach of the upper tension bolt. Please do note that for thick baseboards, the Up Cup may not be sufficient.



DO NOT attempt to fit the gate by installing above the baseboards. This will highly increase the risk of tripping and compromise the safety.

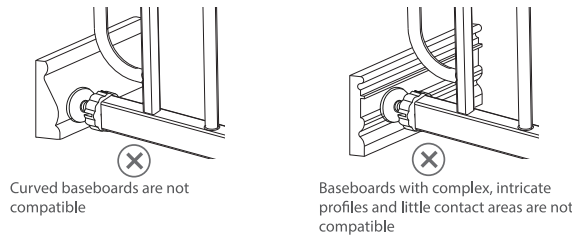


2 For Use with Banisters and Irregular Surfaces

Check if your banister/surface is compatible with the gate.

This gate is compatible with flat surfaces with sufficient contact area. Surfaces such as round banisters, banister with very little contact area, or curved and irregular baseboards are not compatible.

Attempting to install on these surfaces would increase the risk of gate falling and may result in serious injury.



🗨️ FREQUENTLY ASKED QUESTIONS (FAQ)

1 Why is my gate looks slightly crooked/bent and why is there a gap between the latch and the post? (Before Installation)

This is completely normal. The gate looks as it sprung at the top (or crooked) due to the nature of the pressure-mounted design. This enables the gate to 'push' against the walls, securing it in place upon installation.

The gate comes with preinstalled wire rope or plastic belt to hold the door and the post together. This makes installation easier as the pressure is handled by the wire/belt before installation.

However, if the gap is too wide, the wire rope or belt may have snapped. If this happened, reinstall the wire rope by pushing the gate together (closing the gap), and insert the wire rope through the hole and slide it to the top. Alternatively, a plastic tie/belt may be used to hold the gate in place. You may need assistance of others for this procedure.

2 Why are there no threads on the holes for the bolts to screw in? and why are they all loose in the holes?

The tension bolt mechanism works independently of the gate. The bolts do not need to be screwed in to the holes (only loosely inserted); thus eliminating the need for threads.

The part of the tension bolt that exerts pressure to the gate is the nut/adjustment knob. As the nut is tightened, it will push against the gate, and the other end of the bolt push against the wall; securing the gate in place.

3 What if I need more extensions than the ones supplied?

Unfortunately our extensions are not sold separately. Please ensure that the gate you purchased is capable to cover your opening.

4 What if the gate is not compatible with my opening? Is there any way to keep the gate utilized?

Some baseboards or banister setups may not be compatible with the gate, even with all the supplied accessories used. In this case third-party accessories may be used. However, please do note that any damage or loss resulted from the use of third party accessories are not the liability of the manufacturer.

5 What is the maximum travel of the tension bolt?

The maximum travel of the tension bolt is approximately 1.3". When the nut /adjustment knob and the end of the bolt is considered, the total maximum length is approximately 2".

6 What is the Dual-lock mechanism and how does it work?

The Cumbor gate is equipped with a dual lock mechanism for child safety. The top latch is responsible as the first lock, whereas the bottom latch acts as the second one. To open the bottom latch, slightly lift the gate upwards and it would release the bottom lock. This is designed so that a child would not easily open the gate, preventing them from potential danger.

⚠️ WARNING

IMPORTANT! Keep for future reference:

- To prevent serious injury or death, securely install gate and use according to manufacturer's instructions.
- Never use with a child able to climb over or dislodge the gate.
- This product will not necessarily prevent all accidents.
- Never leave child unattended.
- Use only with the locking mechanism securely engaged.
- Intended for use with children from 6 months through 24 months of age.
- Stop using gate if any parts are missing or become damaged.
- Periodically check all fasteners to be sure they are tight and secure.
- Adult assembly required.
- The surfaces that the gate is to be fixed to must be suitable for the purpose and must be structurally sound.

- Indoor use only, is not to be exposed to outdoor elements.
- Install this gate away from heaters and other sources of heat.
- Children have died or been seriously injured when gates are not securely installed.
- Always install and use gates as directed using all required parts.
- You must install wall cups to keep gate in place. Without wall cups, child can push out and escape.
- Never use to keep child away from pool.
- Gates must be installed at least 4 inches from the first step of the stair.
- Use of any third-party accessory is not covered by warranty; and any consequences of such usage is not the liability of the manufacturer or brand.
- The gate must be installed against the floor while not using the ramp.

🔧 MAINTENANCE

- Clean by using a sponge with warm water or mild detergent.
- DO NOT use abrasive cleaners or bleach.
- Check the gate regularly to ensure all hardware and mounts are securely tightened.
- DO NOT use if any component are damaged or missing.