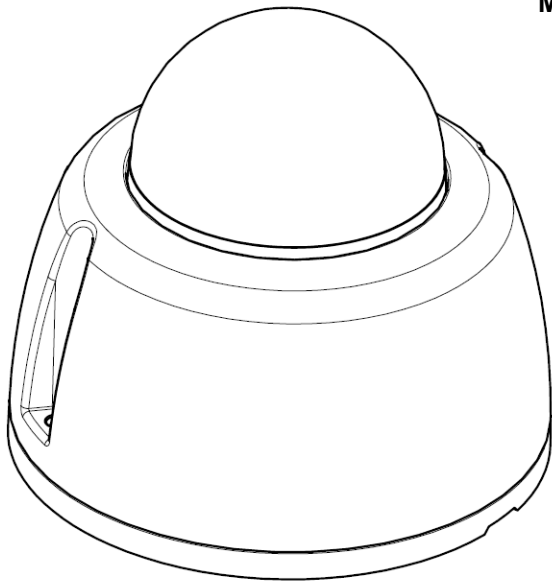


# **AI-Eye 8M Fixed Lens Dome Network Camera**

## **Quick Start Guide**

**Model:**

VS68200

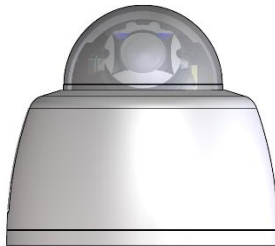


### 1.1 Accessing via Web Browser

Default IP address	User name	Password
<a href="https://192.168.0.11">https://192.168.0.11</a>	admin	AbAi.Camera1

### 1.2 Appearance Description

The overview of the dome camera is shown below:



# AI IP Camera Quick Start Guide

### 1.3 Packing list

[illegible]

## AI IP Camera Quick Start Guide

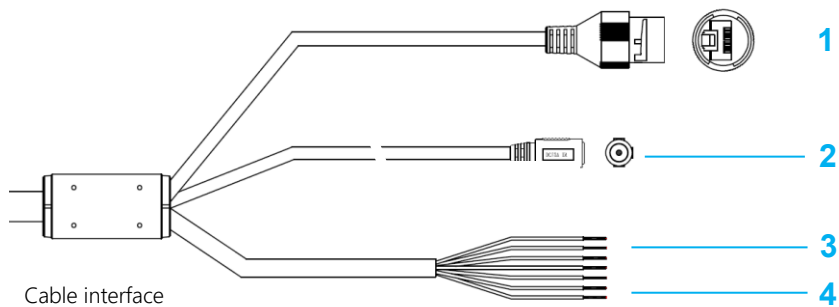
---

### 1.4 Cable

No	Item	Description
1	LAN/POE	Ethernet/POE connection. This interface supports POE.
2	DC 12V+ / DC 12V –	Power input interface. DC 12V ( 9.0V ~ 15.0V )
3	ALARM_OUT COM	Alarm output and COM interfaces. The interface work together to form the alarm output.
	ALARM_IN ALARM_GND	Alarm input interface. There may be multiple alarm interfaces. For a given number of interfaces, n, they are numbered (for example: ALARM_IN0, ALARM_IN1, ...,ALARM_INn). Each one connects to the ALARM_GND connection to form a single alarm input.
4	AUDIO IN/ AUDIO OUT/ AUDIO_GND	Audio input (connect to MIC)/output interface and audio ground interface.

## AI IP Camera Quick Start Guide

---















## 2. Installation

Indoor use only and external circuits installed wholly within the same building structure.

### 2.1 Note

2.1.1 Make sure the device in the package is in good condition and all the assembly parts are included.

You will need the following:

 Video surveillance tester	 Hammer drill (for mounting a camera on the ceiling or wall)	 PVC insulation tape	 Phillips screwdriver (Head model: 1# and 2#.)	 RJ-45 connector crimping tool	 Measuring tape
 Claw hammer (for mounting a camera on the ceiling or wall)	 Cable stripper	 Waterproof tape	 Glass cement	 Utility knife	 Wiring terminal

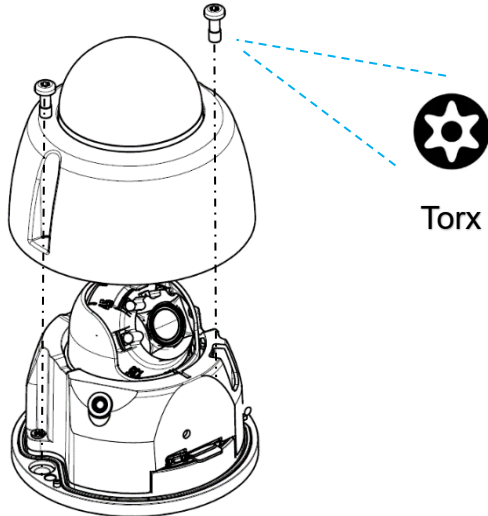
### 2.2 Caution

Please do not lift a camera by its cable.



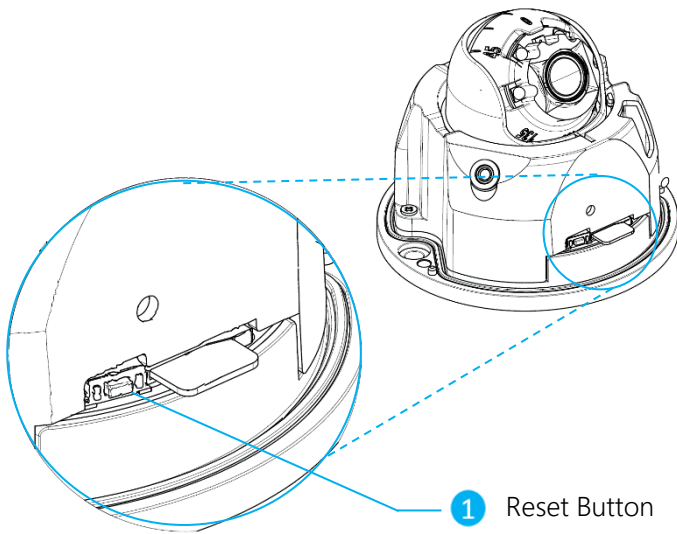
### 2.3 Top cover of the camera removes

- Use a Trox screwdriver to remove the Top cover of the camera, and lift the cover to open it. Then, you can see the Reset button and an SD card slot.



### 2.4 Reset Button

- To restore the camera to factory settings and software reboot the camera, you need to press and hold the reset button 5~10 seconds.
- To restore the camera to factory settings and hardware reboot the camera, you need to press and hold the reset button more than 10 seconds.

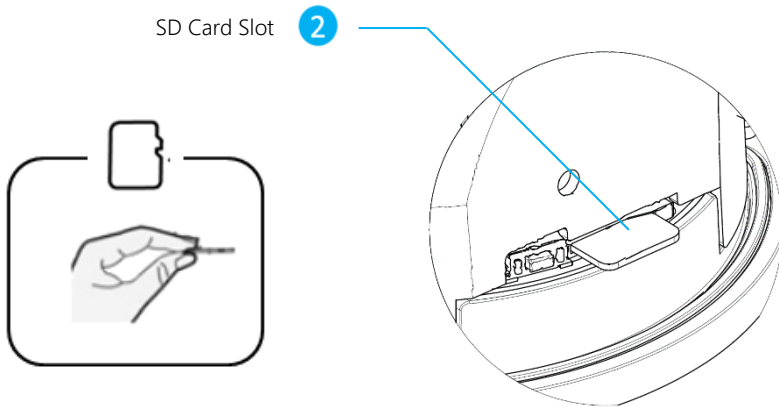




### 2.5 Micro SD card installation

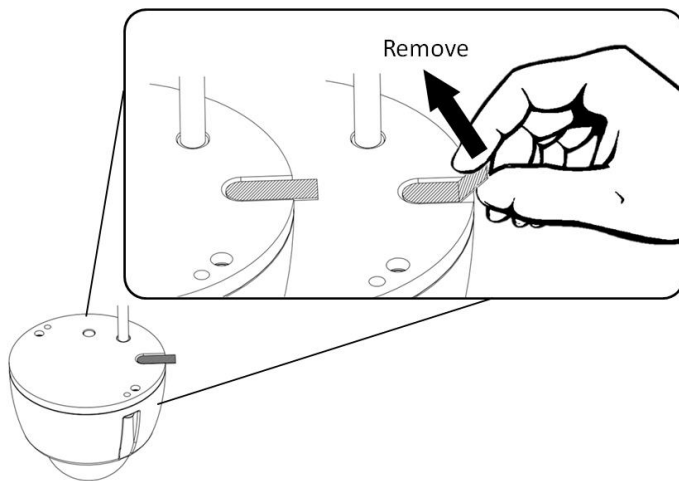
The SD card slot supports only class 6 or higher Micro SD card. To replace a Micro SD card, the device must be powered off. Otherwise, system exception may occur. When a Micro SD card is used for the first time, log in to the web client of the device and format the Micro SD card. For details, see the Configuration Guide.

Please refer to figure 2.5, insert the memory card to memory card slot on the rear housing of the camera. During SD card installation, you are advised to turn the camera maintenance position upward and insert the SD card into the SD card slot from upon to avoid accidentally dropping the SD card into the camera.



### 2.6 Remove the Anti-moisture Sticker

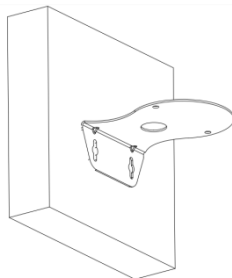
Before mounting the camera onto its install position, please remove the anti-moisture sticker in the first place to get the air vent start working.



### 2.7 Wall Mount Installation with wall mount stand

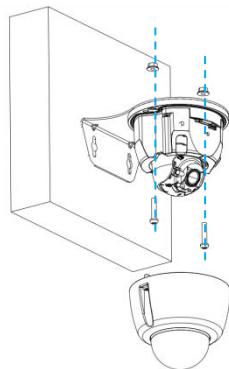
#### Step 1

Use a 5mm drill bit to drill four 35mm deep holes in the positions marked by the drilling sticker. Use a hammer to carefully drive the white plastic expansion tubes into the holes. Then use 2 screws to mount the wall stand onto the wall.



#### Step 2

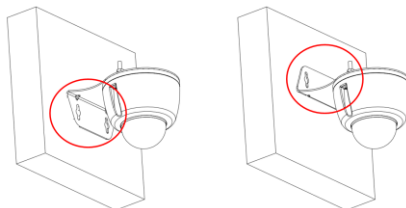
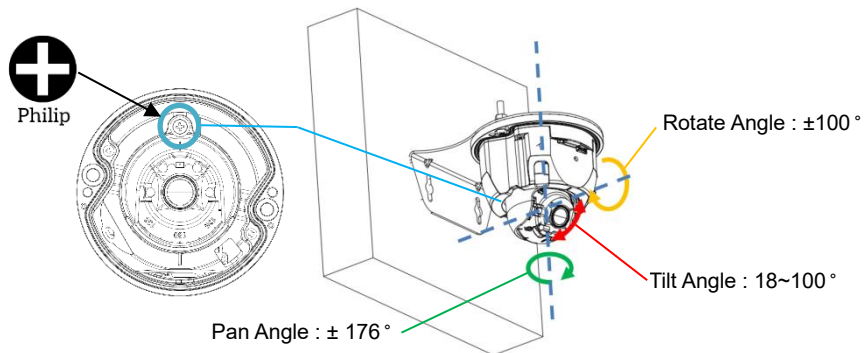
Place the camera onto the wall-mount bracket such thread the cables through the hole of the bracket as well as. Then use 2 pairs of screw and nut to mount the camera onto the wall-mount bracket.



## AI IP Camera Quick Start Guide

### Step 3:

Loosen the Philips head screws and adjust the camera to the required angle. Then re-tighten the screws. Finally, fasten the top cover of the camera. (Note. Depending on the usage and the space limitation, the mounting can be done as the two stances shown in the figures.)

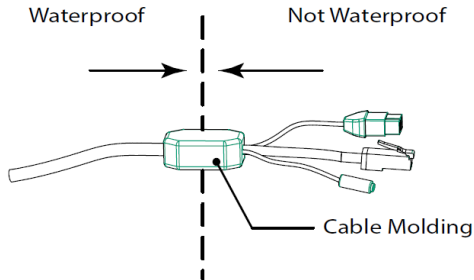


Downward/Upward Stance

## 2.8 Cable connection

### 2.8-1 For safety precautions

- The lightning arrester must be installed and grounded if you install camera outdoor.
- Strong and weak current cables must be kept at least 5 cm apart from each other. When connecting the cables to the device, take care to avoid connecting strong current cables to weak current interfaces or you will damage your device.
- The tail of cable must be cut if it cannot pass through the wall, please keep the label on tail of cable. And please make sure to use insulating tape and waterproof tape to insulate and waterproof all tail of cable to avoid short circuits and water leakage.
- Wrap all pigtail cables in insulated, waterproof, rubber tape to prevent short circuits or water damage.



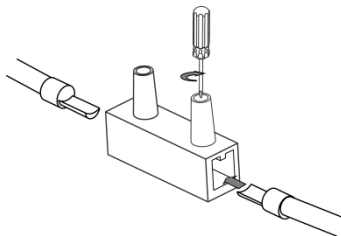
### 2.8-2 Power cable connection

Connect the power cable to the device.



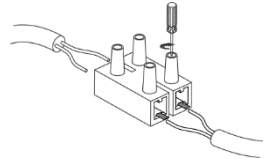
### 2.8-3 Ground cable installation

Please connect ground cable of camera to ground.



### 2.8-4 Audio and alarm cable installation

Connect the ground cable to ground the device, and then connect the power cable. If crimp terminals are not used, the wire thickness cannot exceed  $1.5\text{mm}^2$ , and the length cannot exceed 25m. If crimp terminals are used, the wire can be up to  $0.75\text{mm}^2$  for a 15m length of wiring or up to  $1.0\text{mm}^2$  if 20m is required. Longer wiring is not supported. The ground impedance cannot exceed 5 ohms.



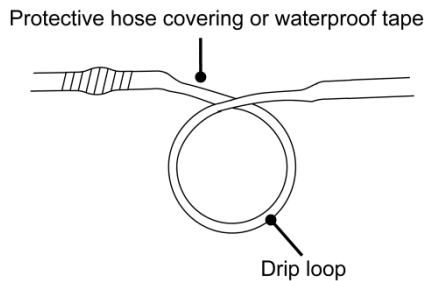
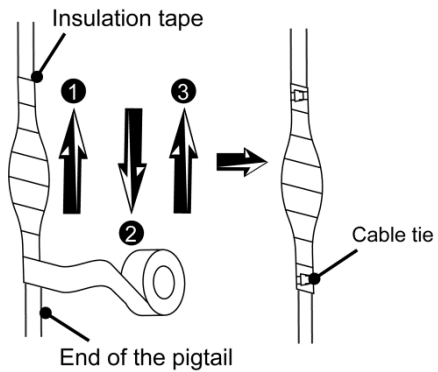
### 2.9 Cable waterproof and insulation

Waterproof and insulate all cables including power cables, network cables, and unused pigtails.

1. Wrap one layer of insulation tape around each cable joint.
2. Stretch the waterproofing tape evenly to twice its original length. Then apply it for three layers from bottom to top, from top to bottom, and from bottom to top again.
3. Stretch the insulation tape evenly to twice its original length. Then apply it for three layers from bottom to top, from top to bottom, and from bottom to top again. Finally tie the upper and lower ends with cable ties. Then use cable ties to secure the both ends.
4. Cover the rest of the cabling in a conduit or with protective waterproof rubber tape. Make a drip loop as shown below to create an artificial lowest point of the cable.

## AI IP Camera Quick Start Guide

---



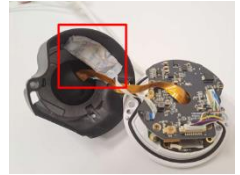


# AI IP Camera Quick Start Guide

---

## 3. Desiccant Bag Replacement

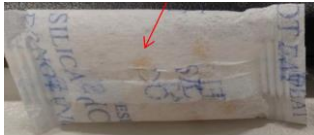
If the camera is experiencing fogging, you will need to replace the existing desiccant bag (The rectangular object inside the camera frame.)



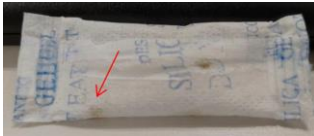
### 3.1 Identification of Desiccant Bag's Functionality

The remained functionality of the desiccant bag can be identified by the color of the silica gel beads among the desiccant, which are:

**Bright Yellow** - Dry



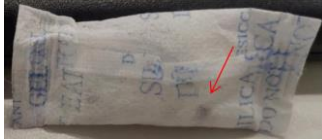
**Light Green** - Some moisture is absorbed



# AI IP Camera Quick Start Guide

---

**Dark Green** - A considerable amount of moisture was absorbed

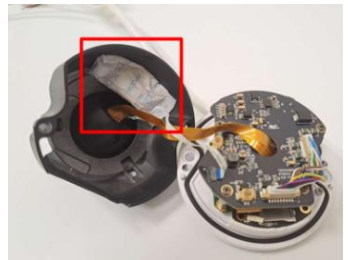


To replace the desiccant bag, please follow the steps mentioned in the following sections, and the procedures should be done by the engineering staff.

## 3.2 Replace the Desiccant Bag

### Step1

Open the housing and the BoxPan of camera and locate the desiccant bag. The desiccant bag will be attached to the inner surface of the BoxPan. (For more information, please refers to the user's manual of your camera model.)

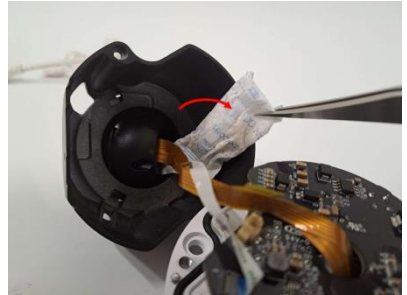


## AI IP Camera Quick Start Guide

---

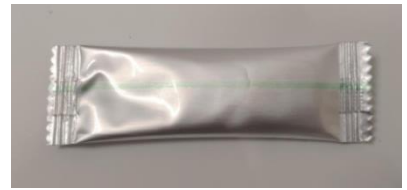
### Step2

Remember the place of desiccant bag and remove it.(Note: Be careful, do not exert any pressure in the camera lens or other components.)



### Step3

Open the aluminum foil pack that is included in the camera box. The desiccant bag is included inside it.



## AI IP Camera Quick Start Guide

---

### Step4

Stick a double-sided tape on desiccant bag. Pull the adhesive tape cover in order to attach the desiccant bag to the camera. (Note: Some of desiccant bags already stick a double-side tape, so just remove the tape cover then attach the desiccant bag to the housing.)



### Step5

Place the desiccant bag to the same place as the old one. Be sure to press it tightly so that it won't fall after.



### Step6.

## AI IP Camera Quick Start Guide

---

Put back the BoxPan & housing of the camera as soon as the bag is replaced. (If you leave it open too long, the desiccant bag will start absorbing water from the environment.)



## AI IP Camera Quick Start Guide

---

### Step7

Be sure the housing is closed tightly.



### 4. Check Item

Please confirm the following to ensure that the equipment is installed correctly.

Check Item	Result
All screw fully tightened	YES <input type="checkbox"/> NO <input type="checkbox"/>
The camera is securely installed to the mount or wall	YES <input type="checkbox"/> NO <input type="checkbox"/>
The ambient temperature meets the device specifications.	YES <input type="checkbox"/> NO <input type="checkbox"/>
Insulation and waterproofing measures have been taken to protect cables installed in humid environments, and the drip loops are in correct positions.	YES <input type="checkbox"/> NO <input type="checkbox"/>
The camera can power on normally.	YES <input type="checkbox"/> NO <input type="checkbox"/>
You can access the camera web portal using the IP address you configured.	YES <input type="checkbox"/> NO <input type="checkbox"/>
On the camera web portal, you can view live video from camera.	YES <input type="checkbox"/> NO <input type="checkbox"/>
You can view the surveillance from camera web pages and the image is clear, as shown in the following figure.	YES <input type="checkbox"/> NO <input type="checkbox"/>
In night vision mode, the surveillance is can be viewed clearly.	YES <input type="checkbox"/> NO <input type="checkbox"/>

# AI IP Camera Quick Start Guide

Declaration of toxic and hazardous substances in electronic and electrical products

設備名稱(Equipment name) :				型號 ( 型式 ) Type designation (Type) :		
單元 Unit	限用物質及其化學符號 Restricted substances and its chemical symbols					
	鉛 Lead	汞 Mercury	鎘 Cadmium	六價鉻 Hexavalent chromium	多溴聯苯 Polybrominated biphenyls	多溴二苯醚 Polybrominated diphenyl ethers
	(Pb)	(Hg)	(Cd)	(Cr <sup>+6</sup> )	(PBB)	(PBDE)
PCBA	-	○	○	○	○	○
塑膠件	○	○	○	○	○	○
金屬件	○	○	○	○	○	○
Cable	○	○	○	○	○	○
電池	-	○	○	○	○	○
<p>備考1. “超出0.1 wt %” 及 “超出0.01 wt %” 係指限用物質之百分比含量超出百分比含量基準值。          Note 1: “Exceeding 0.1 wt %” and “exceeding 0.01 wt %” indicate that the percentage content of the restricted substance exceeds the reference percentage value of presence condition.</p> <p>備考2. “○” 係指該項限用物質之百分比含量未超出百分比含量基準值。          Note 2 : “○” indicates that the percentage content of the restricted substance does not exceed the percentage of reference value of presence.</p> <p>備考3. “-” 係指該項限用物質為排除項目。          Note 3 : The “-” indicates that the restricted substance corresponds to the exemption.</p>						



### **FCC compliance statement**

This device complies with part 15 of the FCC Rules. Operation is subject to the following two conditions: (1) this device may not cause harmful interference, and (2) this device must accept any interference received, including interference that may cause undesired operation.