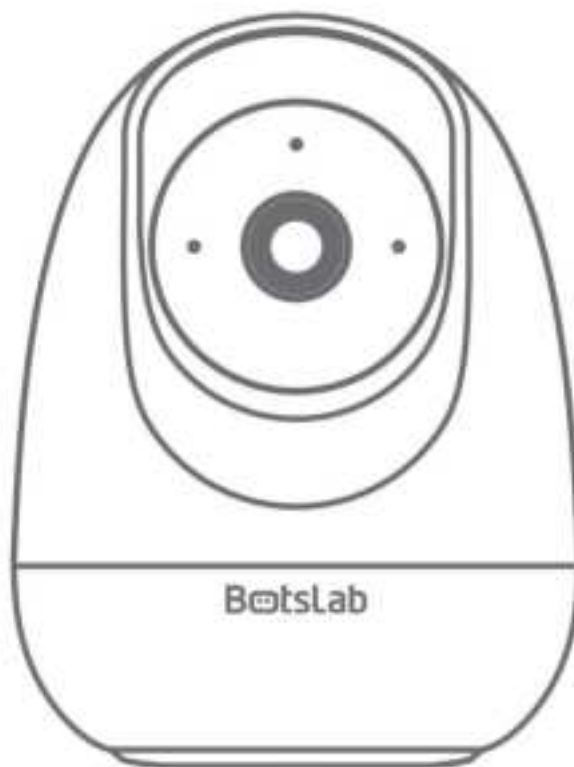


BotsLab

Be Secure, Be Botslab



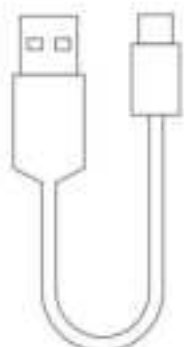
Botslab Indoor Cam 2E Pro Quick Start Guide

Packing list

Please check whether the main unit and all accessories are complete upon unpacking.



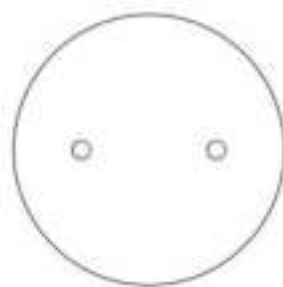
Main camera
unit x 1



Power
cable x 1



Wall mount
base x 1



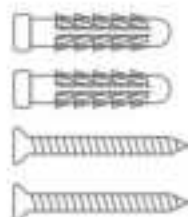
Positioning
sticker x 1



Quick Start
Guide x 1

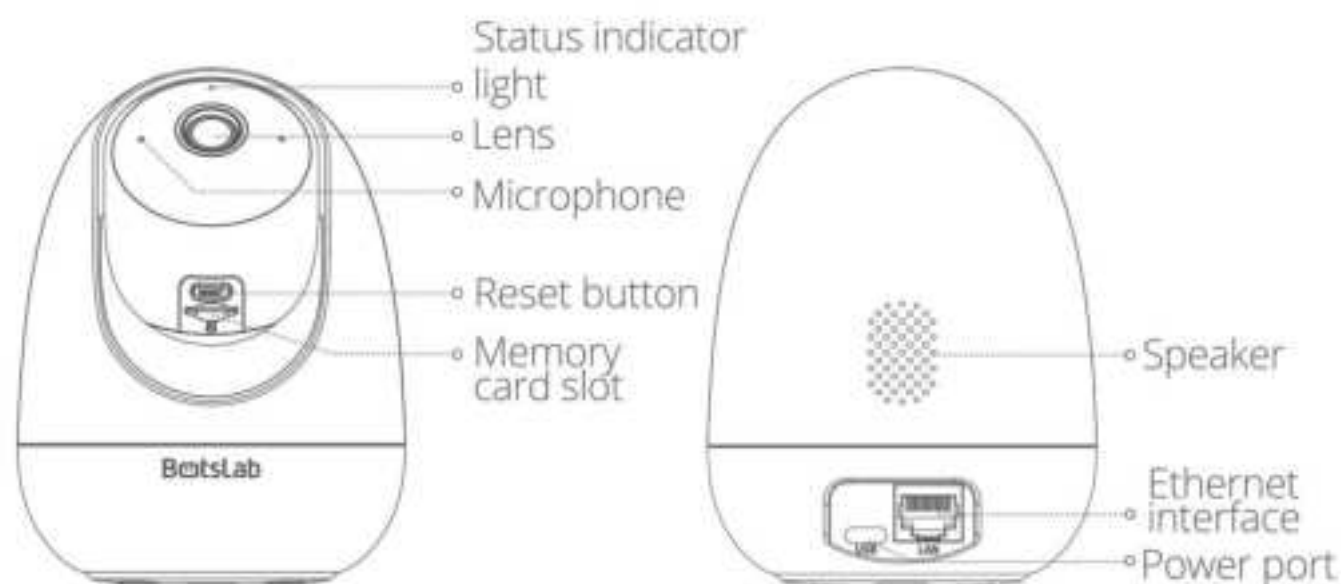


Power
adapter x 1



Screw pack for
installation x 1

Product appearance



Reset hole: When the camera is powered on, press the reset hole with the thimble for 5 seconds, and the "Di" sound indicates a successful reset.

Memory card: Maximum storage of 256 GB.

Network configuration instructions

Download and install the APP

Method 1: Scan the QR code below with your mobile phone to download and install the Botslab APP.

Method 2: Search and download the Botslab APP from App Store or Google Play, and then install it.



Scan to download
Botslab APP



Connect to a power

Find the power socket on the bottom of the product and connect it to a power supply. When the product status indicator lights up in flashing green, it indicates that the camera is powered on for network configuration.

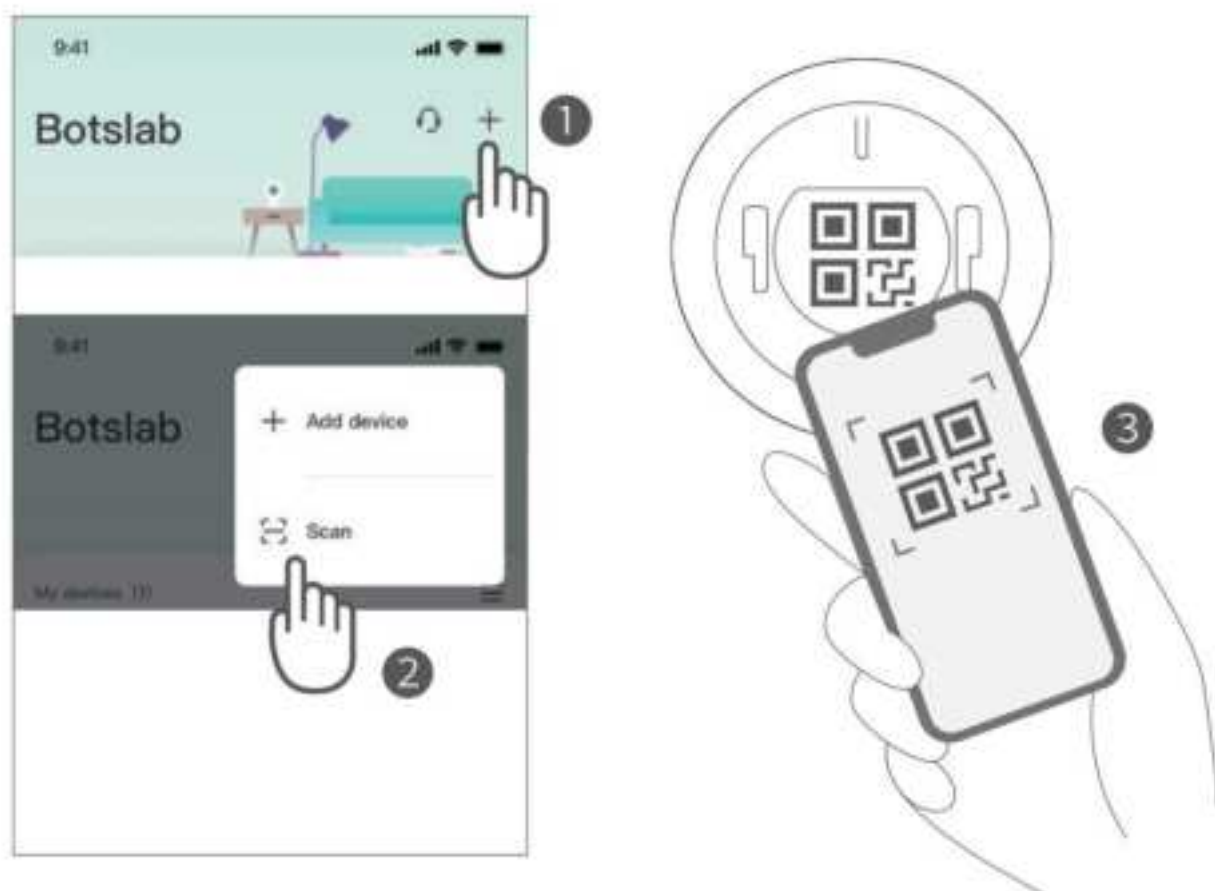
Note: If the status indicator lights are not flashing green, reset the device now.

Add camera

Launch the Botslab APP, tap the "Sign up" button, and start creating your account. If you already have an account, please log in directly and add a camera.

Method 1: Tap the "+" button in the upper right corner of the APP homepage to "Scan" the code, then use your mobile phone to scan the QR code at the bottom of the camera to enter the distribution page, and add the camera as instructed.

Method 1: Tap the "+" button in the upper right corner of the APP homepage to "Add Device", tap the "Camera" button, tap and select the "Botslab Indoor Cam 2E Pro C213" icon to enter the distribution page, and add the camera as instructed.

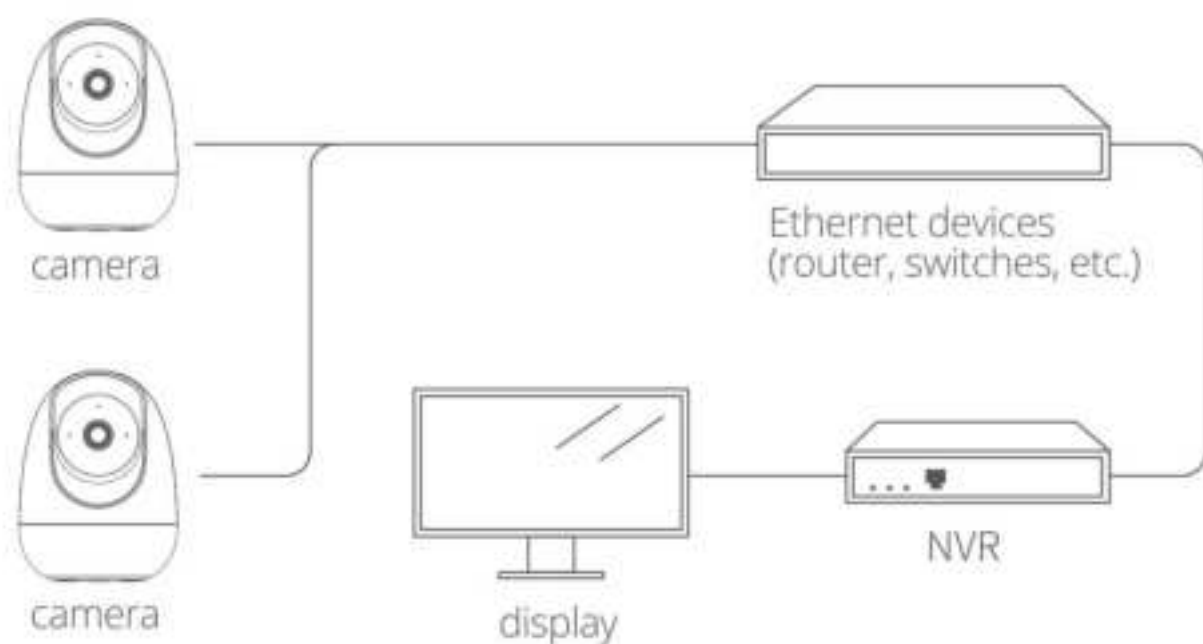


Note:

- Complete the sound wave pairing in a quiet environment.
- Support network cable connection.
- When using WiFi connection, please ensure that the camera is connected to a Wi-Fi network in the 2.4GHz frequency band.

Use with Network Video Recorder (NVR)

First, bind the camera to the app, then follow the steps (shown in the picture below) to connect the camera to the NVR. Once added to the NVR interface, the camera will be ready to use.



Note: Support the mainstream NVR.

Installation guide

Method 1: On a table

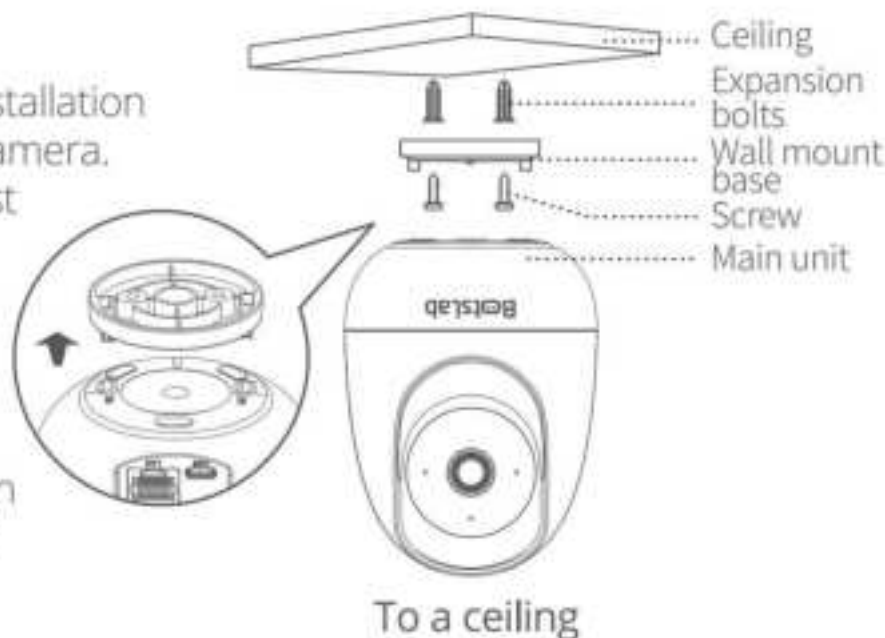
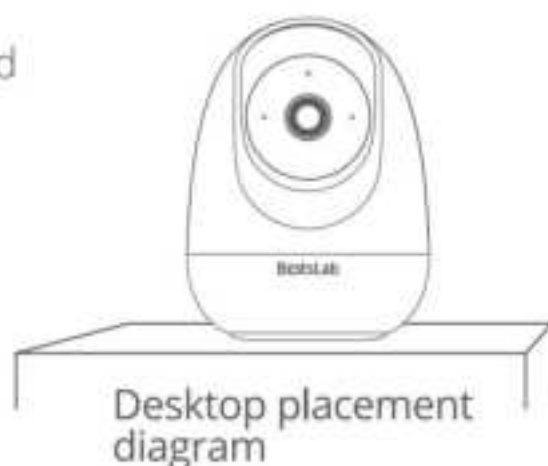
The camera can be placed on the leveled surface of a desk, table, tea table, etc.

Method 2: To a ceiling

- Drill holes in the ceiling and install expansion bolts, and fix the base on the wall with screws.
- Align the fixing groove at the bottom of the camera with the buckle on the base, and gently push it in until it cannot be pushed to complete the installation.

Notes:

- Please start ceiling-mount installation after you have added the camera.
- The ceiling for mounting must be able to bear at least 3 times the total weight of the camera and the base.
- Please rotate the picture for ceiling-mount installation:
Settings - Image, night vision and sound - Rotate Image - Inverse camera.



Notes

1. For better night vision imaging, do not use the camera with the front or sides of the lens near reflective materials such as glass and white walls; otherwise, the images of things nearby will be rendered bright while those far away dark or even white.
2. Try to place the device in a place with good network signal reception. The distance between the device and metal objects (e.g., metal supports, metal doors, and windows) or other signal interference sources should not be too close.
3. Do not place the device near the heat source, e.g., electric heater, oven, or stove fire.
4. The applicable working temperature of this product is -10°C – $+45^{\circ}\text{C}$. Please do not use it in an environment where the temperature is too high or too low.
5. Please do not use this product in an environment that is excessively humid and may cause water ingress.

Operating mode description

Status indicator light	Operating mode description
Constant blue	Camera connected
Flashing blue	Someone viewing video
Constant green	Camera turned on/failure
Flashing green	Waiting for network configuration/Camera offline
Quickly flashing green	Camera upgrading

- i** The manufacturer reserves the right to adjust the functional status of the product through firmware upgrades or software adjustments.

Important

Personal information security

For the safety of you and your family, please make sure that the products you purchase are not bound to any unauthorized person. Botslab will take strict measures to protect the information security of you and your family.

Description of Hazardous material Contents

Component	Toxic and Harmful Substances and Elementst					
	Lead (Pb)	Mercury (Hg)	Cadmium (Cd)	Hexavalent Chromium (Cr (VI))	Polybrominated Biphenyls (PBB)	Polybrominated DiphenylEthers (PBDE)
Plastic enclosure	○	○	○	○	○	○
Circuit board components	×	○	○	○	○	○
Power cable	×	○	○	○	○	○
Adapter	×	○	○	○	○	○
Lens	○	○	○	○	○	○
<p>This form is prepared in accordance with SJ/T11364.</p> <p>○ : Indicates that for each item in this produce ,said hazardous substance id below the requirements set forth by the standard GB/T26572.</p> <p>×</p> <p>It indicates that the hazardous substance in at least one homogeneous material of this part exceeds the limit specified in GB/T26572. However, it satisfies limit requirements specified in the List of Exempt Applications of Hazardous Substances Identified in the Management Catalog.</p>						



Note: A small patch of electronic components for special purposes is marked with "X" in the table (such as high voltage resistors, ceramic resistors, diodes), in which the lead content may exceed 0.1% . As the screws and the core in the data cables using alloy with better performance, the lead content may also be exceed 0.1%. These components are in accordance with the require- ments of the exemption clause of the EU RoHS directive. Limited by the current global technology development, there are no other alternative technologies and components. The external lead contents of these components are in accordance with enviornmental protection requirements.

FCC Statement

This device complies with Part 15 of the FCC Rules. Operation is subject to the following two conditions: (1) This device may not cause harmful interference, and (2) this device must accept any interference received, including interference that may cause undesired operation.

Warning: Changes or modifications not expressly approved by the party responsible for compliance could void the user's authority to operate the equipment.

Note: This equipment has been tested and found to comply with the limits for a Class B digital device, pursuant to Part 15 of the FCC Rules. These limits are designed to provide reasonable protection against harmful interference in a residential installation.

This equipment generates, uses, and can radiate radio frequency energy and, if not installed and used in accordance with the instructions, may cause harmful interference to radio communications. However, there is no guarantee that interference will not occur in a particular installation. If this equipment does cause harmful interference to radio or television reception, which can be determined by turning the equipment off and on, the user is encouraged to try to correct the interference by one or more of the following measures: (1) Reorient or relocate the receiving antenna. (2) Increase the separation between the equipment and receiver. (3) Connect the equipment into an outlet on a circuit different from that to which the receiver is connected. (4) Consult the dealer or an experienced radio / TV technician for help.

This equipment must be installed and operated in accordance with provided instructions and the antenna(s) used for this transmitter must be installed to provide a separation distance of at least 20cm from all persons and must not be collocated or operating in conjunction with any other antenna or transmitter.

Declaration of Conformity

Hereby, Botslab,Inc. declares that the radio equipment type C213 of Botslab Indoor Cam 2E Elite is compliance with Directive 2014/53/EU and this product is allowed to be used in all EU member states. The full text of the EU declaration of conformity is available at the following internet address: www.botslab.com

Operation frequency (Max power)

Bluetooth:2402-2480(0.9dBm)

Wifi:2412MHz-2472MHz(18.5dBm)

RF exposure statement

RF exposure information: The Maximum Permissible Exposure (MPE) level has been calculated based on a distance of $d=20$ cm between the device and the human body. To maintain compliance with RF exposure requirement, use product that maintain a 20cm distance between the device and human body.

Hereby, Botslab,Inc. declares that the radio equipment type C213 of Botslab Indoor Cam 2E Elite is compliance with the UK Radio Equipment Regulations SI 2017 No. 1206. The full text of the system UK declaration of conformity is available at the following internet address: www.botslab.com

After-Sales Service

1. Product Warranty Policy

This product comes with a One-year Local Warranty Service. For detail of warranty service, please kindly contact local Authorized Distributors in your country.

2. Product Non-Warranty Policy

- Cannot present valid warranty certificate and purchase invoice.
- Damage caused by use, maintainance, or keeping of the product not in accordance with product description, damage caused by disassembly and repair unauthorized by Botslab, or artificial damage.
- Damages which result of force majeure.
- Normal decoloration and wastage during usage will not be included into warranty service.



This symbol means the product must be discarded as household waste, and should be delivered to an appropriate collection facility for recycling. Proper disposal and recycling helps protect natural resources, human health and the environment. For more information on disposal and recycling of this product, contact your local municipality, disposal service, or the shop where you bought this product.