

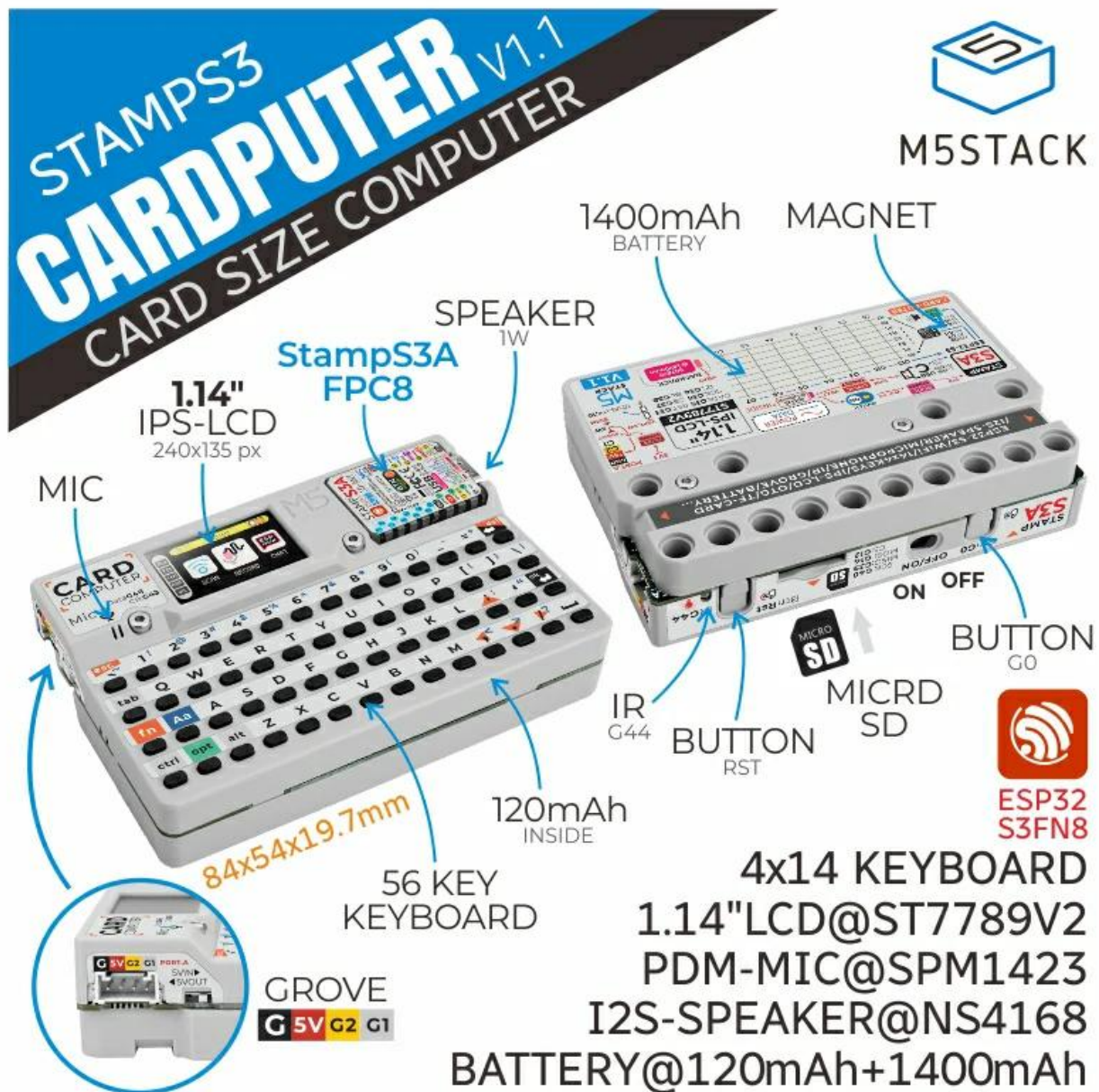
# M5Stack Cardputer V1.1

此类产品是物联网**开源开发版**，**可擦写系统**，并可二次编程修改，刚入门消费者有可能因错误操作，导致设备无系统状态，故无法开机，并非质量问题，只需重新刷**烧录官方固件**即可正常使用。类似电脑错误删除系统文件，导致系统无法开机，只需重装系统，硬件设备一切正常。

已烧录第三方开源固件，遇到问题，请烧录回**官方出厂固件**!!! 否则有权**不承担售后**。

## Factory Firmware

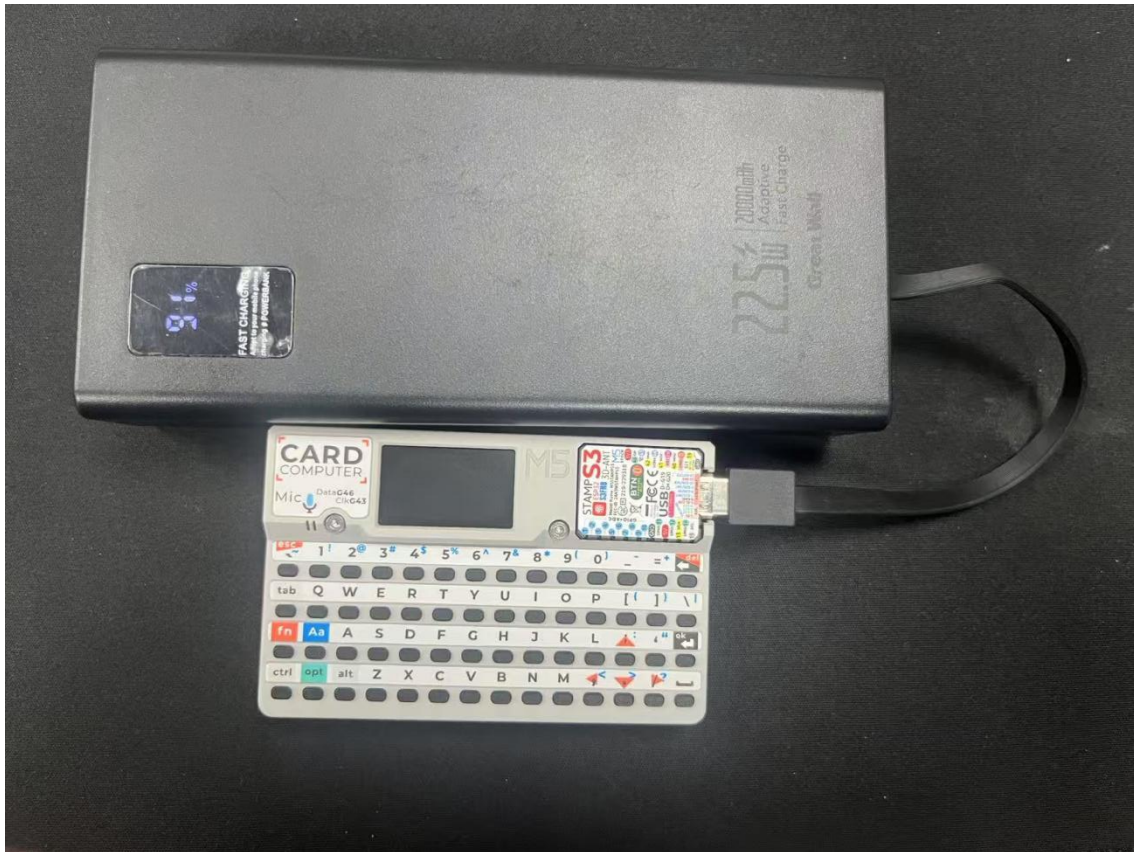
When the device encounters operational issues, you can try re-flashing the factory firmware to check if there is any hardware malfunction. Refer to the following tutorial. Use the M5Burner firmware flashing tool to flash the factory firmware onto the device.



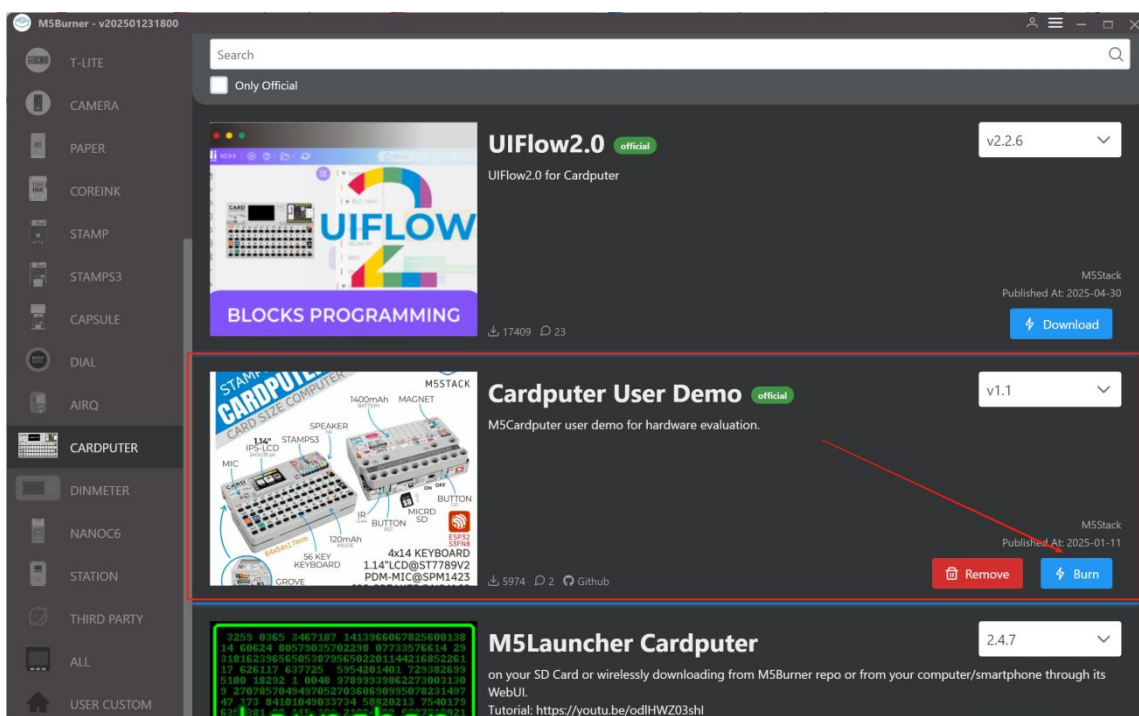


# FAQ

Q1: Why is my Cardputer v1.1 black screen/won't boot?



**Solutions:** M5Burner Burn **official** Factory Firmware "Cardputer User Demo"











**Solutions:** “Bruce for Cardputer” This is an unofficial firmware. Flashing unofficial firmware can void your warranty, cause instability, and expose your device to security risks. Proceed with caution.  
Please Burn back **official firmware**.

MSBurner - v202501231800

Search

Only Official

**MSLauncher Cardputer**

MSLauncher for Cardputer. With this app you can turn your device into a swiss knife, loading any .bin you have on your SD Card or wirelessly downloading from M5Burner repo or from your computer/smartphone through its WebUI.  
Tutorial: <https://youtu.be/odlHWZ03shI>  
Support me: <https://buymeacoffee.com/bmorcelliz>

bmorcelliz  
Published At: 2025-03-22

Download

1.9.1

<https://discord.gg/WJ9XF9czVT>

owner  
Published At: 2024-02-02

Remove Burn

**Notice**

This is an unofficial firmware. Flashing unofficial firmware can void your warranty, cause instability, and expose your device to security risks. Proceed with caution. Are you sure you want to continue?

No Continue

**NEMO For Cardputer**

Firmware for high-tech pranks

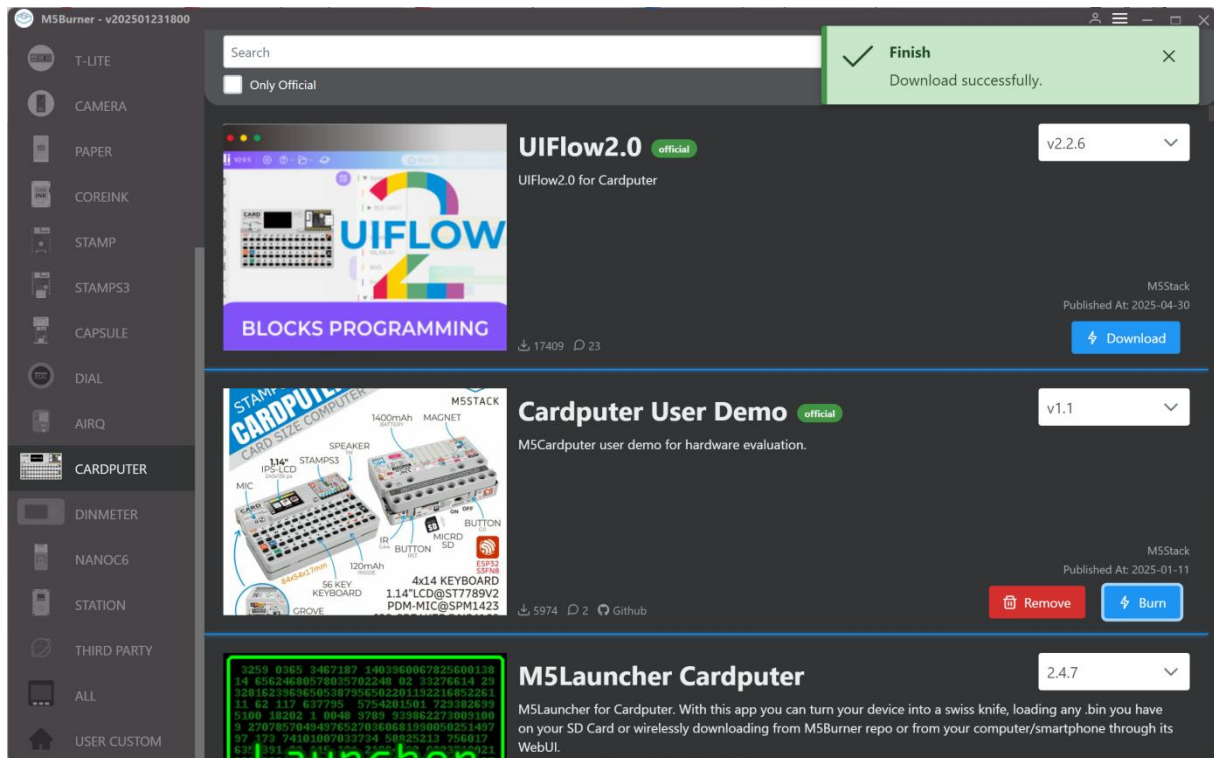
- \* TV B-Gone - shut off TVs, projectors and other devices
- \* WiFi Spam - Funny SSIDs, Random SSIDs, and of course Rickroll WiFi
- \* WiFi Scanning - List nearby SSIDs and get information about them
- \* NEMO-Portal - Wifi Captive portal and password grabber (PT\_BR version has Portuguese language portal)



# 1. Preparation

- Refer to the [M5Burner tutorial](#) to complete the firmware flashing tool download, and then refer to the image below to download the corresponding firmware.

Download link: <https://docs.m5stack.com/en/uiflow/m5burner/intro>



## 2. USB Driver Installation

### Driver Installation Tip

Click the link below to download the driver matching your operating system. The driver package for the CP34X (for the CH9102 version) can be downloaded and installed by selecting the installation package corresponding to your operating system. If you encounter issues with program download (such as timeout or "Failed to write to target RAM" errors), try reinstalling the device driver.

CH9102\_VCP\_SER\_Windows

[https://m5stack.oss-cn-shenzhen.aliyuncs.com/resource/drivers/CH9102\\_VCP\\_MacOS\\_v1.7.zip](https://m5stack.oss-cn-shenzhen.aliyuncs.com/resource/drivers/CH9102_VCP_MacOS_v1.7.zip)

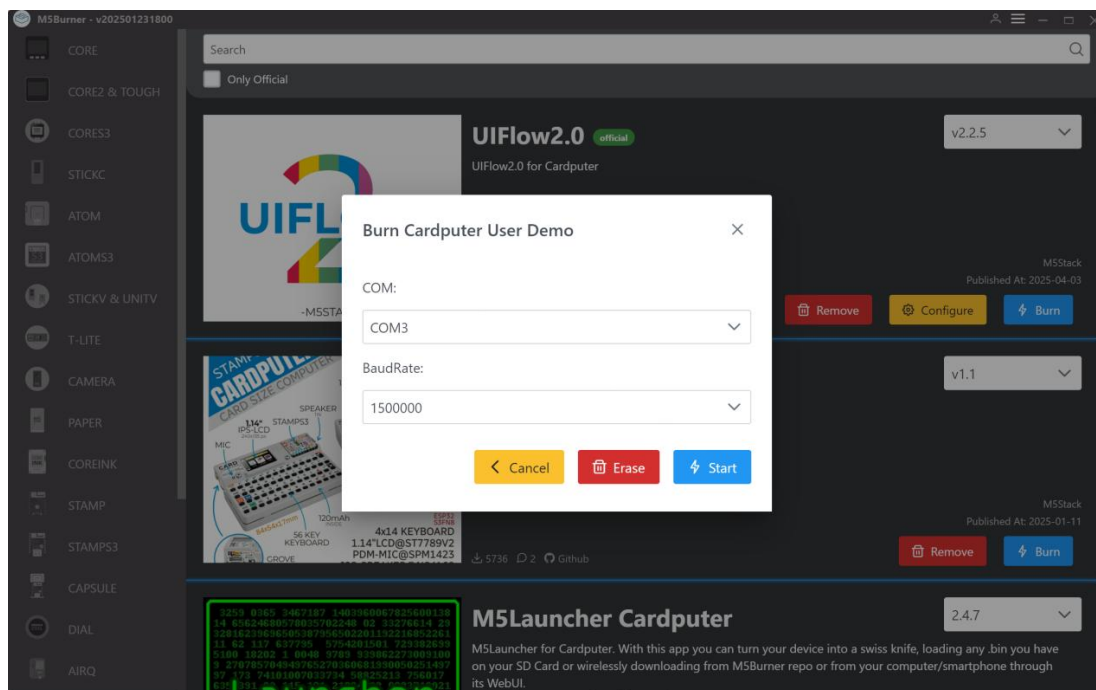
### Port Selection on MacOS

On MacOS, there may be two available ports. When using them, please select the port named wchmodem.



### 3. Port Selection

Connect the device to the computer via a USB cable. After the driver installation is complete, you can select the corresponding device port in M5Burner.



### 4. Burn

Click "Burn" to start the flashing process.

