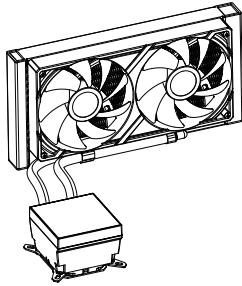




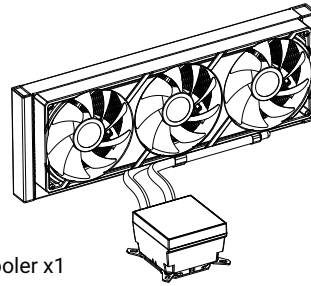
Please assemble by using only the supplied parts.

A1



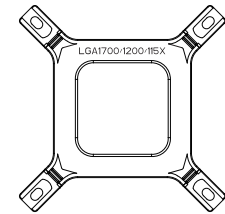
240mm LCD Liquid Cooler x1

A2



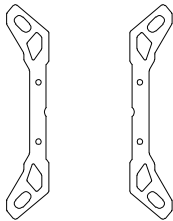
360mm LCD Liquid Cooler x1

B



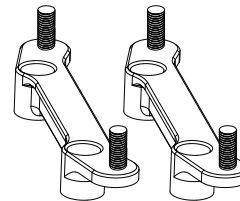
Intel Backplate x1

C



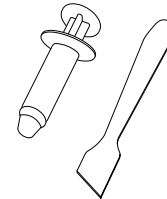
Intel Bracket x2

D



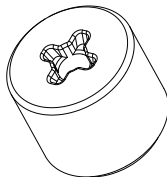
AMD Bracket x2

E



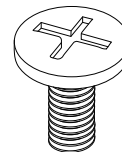
Thermal Paste x1

G1



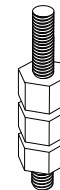
Screw x4

G2



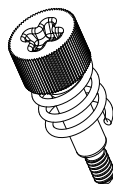
AMD Bracket Screw x4

G3



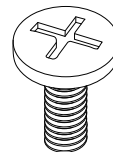
Intel Screw (Compatible with LGA115X, LGA1200, LGA1700) x4

G4



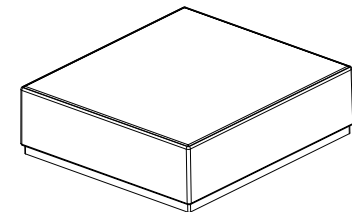
LGA 2011 Stud x4

G5



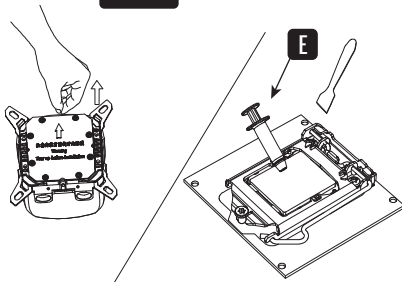
Case Screws
240mm Liquid Cooler x8
360mm Liquid Cooler x12

G6



3.95 inch LCD Display x1

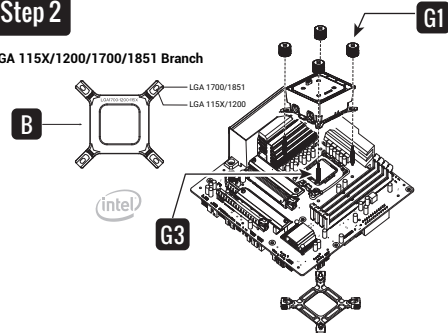
Step 1



Remove the protection film / Applying thermal paste

Step 2

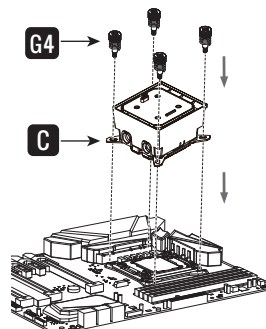
LGA 115X/1200/1700/1851 Branch



Secure the cooler-Intel LGA 115X/1200/1700/1851

Step 3

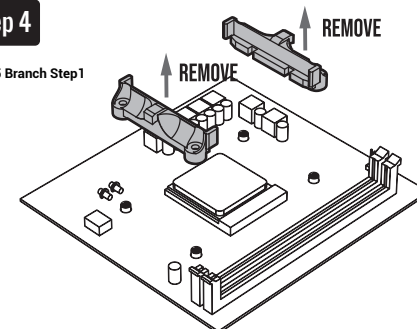
LGA 2011 Branch



Secure the cooler-Intel LGA 2011

Step 4

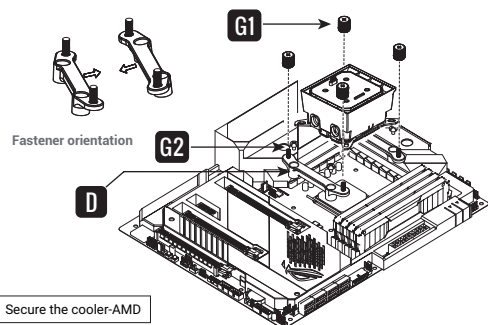
AM4/5 Branch Step 1



Secure the motherboard socket. Retain the backplane

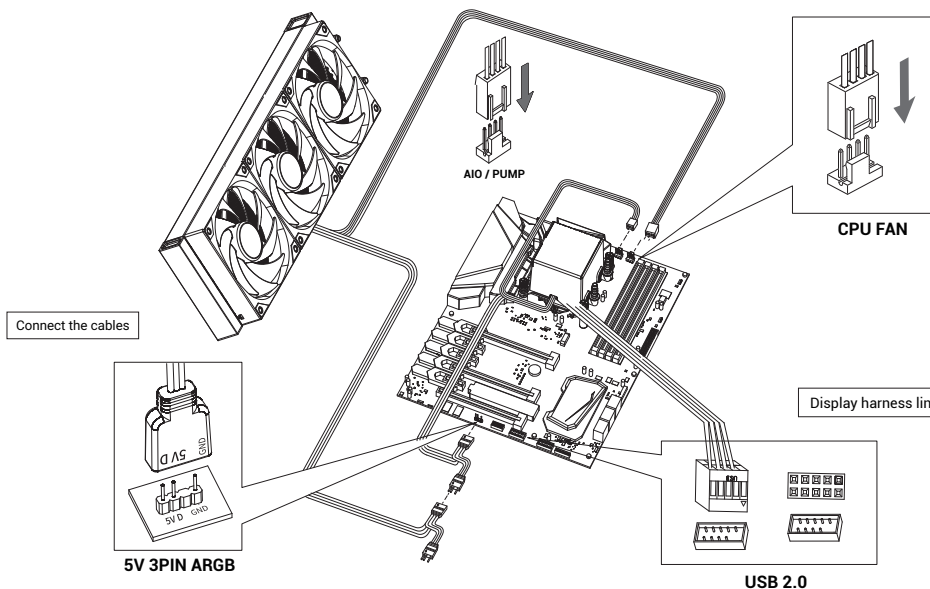
Step 5

AM4/5 Branch Step 2



Secure the cooler-AMD

Step 6



Connect the cables

Please link the display to the motherboard USB 2.0 interface (Generally in the lowermost position of the motherboard, according to the direction of the interface gap can be inserted guests can check according to the motherboard manual)

Connect the 4-pin connector from the pump unit to AIO/PUMP socket on the motherboard.

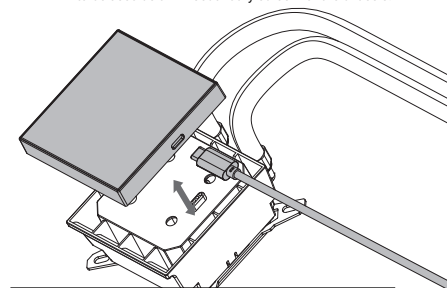
Connect the 4-pin fan PWM connector to CPU_FAN socket on the motherboard.

Connect the fan to the 5V ARGB socket on the motherboard.

Step 7

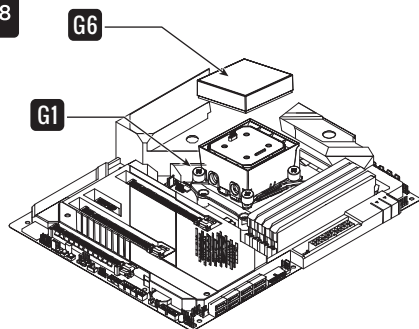
Modular Magnetic LCD Screen

The screen can be connected separately with a TYPE-C cable to be used as a DIY secondary screen for the chassis.



* Please note that the USB cable on the pump head and the TYPE-C cable on the screen cannot be connected at the same time to prevent damage to the screen.

Step 8



Install screen components

Step 8

Secure the the fans and radiator

