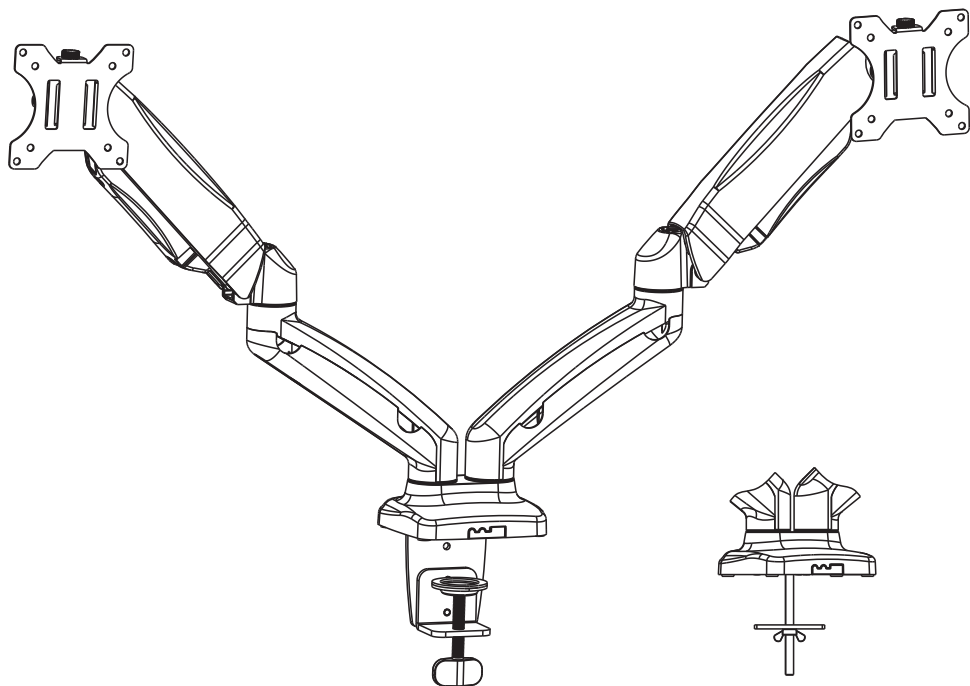




Dual Monitor Desk Mount



GSMP002



75x75/100x100



support@walelectric.com

WARNING!

If you do not understand these directions, or if you have any doubts about the safety of the installation, please call a qualified technician. Check carefully to make sure there are no missing or defective parts. Improper installation may cause damage or serious injury. Do not use this product for any purpose that is not explicitly specified in this manual. Do not exceed weight capacity. We cannot be liable for damage or injury caused by improper mounting, incorrect assembly or inappropriate use.



TIPOVER WARNING

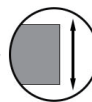
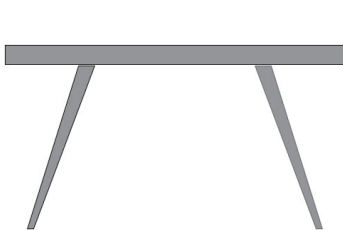
**SERIOUS OR FATAL CRUSHING INJURIES CAN OCCUR FROM TIPOVER.
TO HELP PREVENT TIPOVER:**

- NEVER ALLOW CHILDREN TO CLIMB, STAND, HANG, OR PLAY ON ANY PART OF MONITOR OR STAND.
- USE TIPOVER RESTRAINT OR ANCHOR STAND TO WALL.

USE OF TIPOVER RESTRAINTS MAY ONLY REDUCE, BUT NOT ELIMINATE RISK OF TIP OVER.

SMALL PARTS- NOT FOR CHILDREN UNDER 3 YEARS. ADULT SUPERVISION IS REQUIRED.

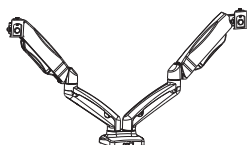
Measure the thickness of your mounting surface or desk



Fit clamp: 0.4"~3.3"

Grommet: 0.4"~3.3"

Supplied Parts List



Arm
A (x1)



VESA Plate
B (x2)



C-Clamp Brace
C (x1)



C-Clamp
D (x1)



M6x10 Bolt
E (x2)



M6x12 Bolt
F (x3)



Metal Pad
G (x1)



Nut
H (x1)



Bolt
I (x1)



Support Plate
J (x1)



Allen Key 4mm
K (x1)



Allen Key 5mm
L (x1)



M4x12 Bolt
M-A (x8)



M5x12 Bolt
M-B (x8)



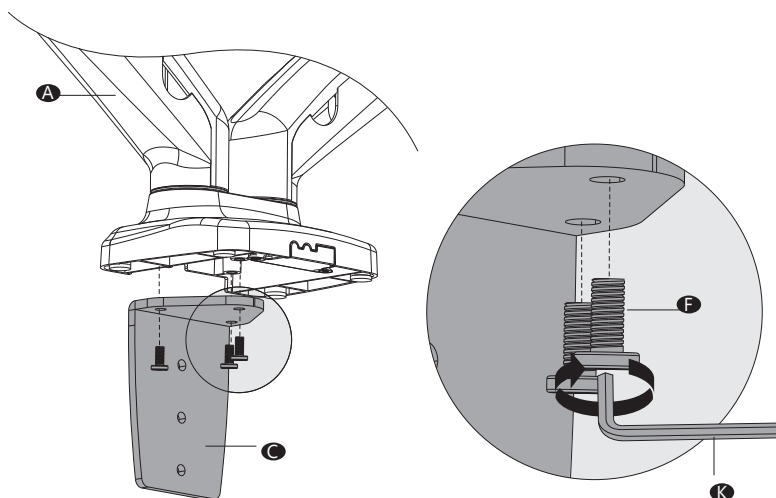
D5 Washer
M-C (x8)

Step 1

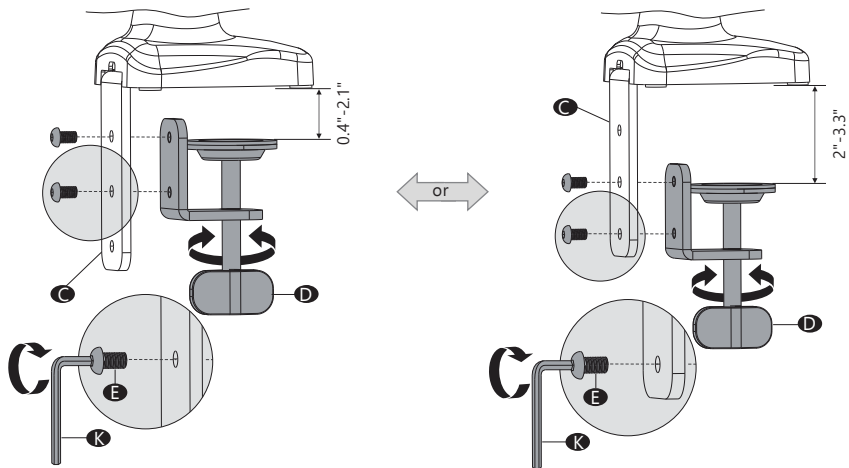
Option A

Clamp Installation

1. Connect Arm **A** and C-Clamp Brace **C** from the bottom using M6x12 Bolt **F** and tighten with Allen Key 4mm **K**.

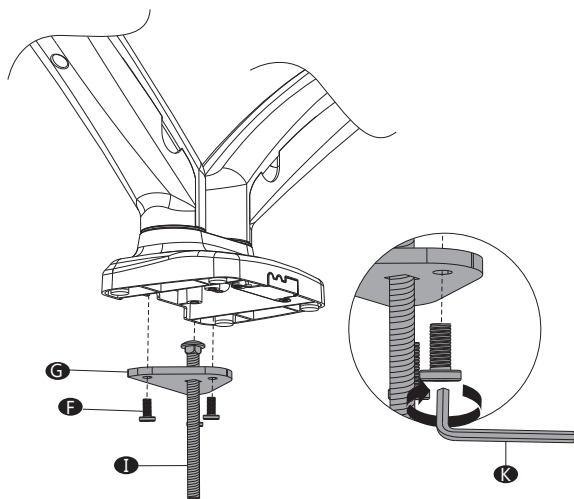


2. Select the preferred height firstly and connect C-Clamp **D** to C-Clamp Brace **C** using M6x10 Bolt **E** and tighten with Allen Key 4mm **K**.



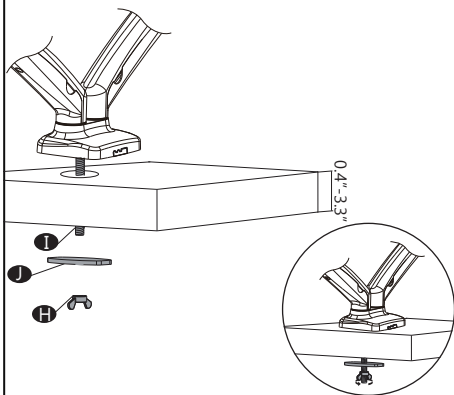
Option B Grommet Base Installation

1. Attach Metal Pad **G** & Bolt **I** to the bottom of Arm **A** using M6x12 Bolt **F**, tighten up with Allen Key 4mm **K**.



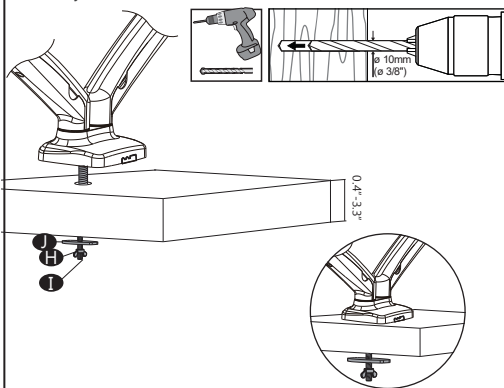
2a Existing Grommet Hole Installation

If the existing grommet hole comes with a plastic protector, remove it to ensure a flat surface before installing the desk mount. Insert the assembled Bolt **I** through the desk hole, guide the Support Plate **J** and Nut **H** through the Bolt **I**, rotate the Nut **H** clockwise to fasten for stability.



2b Self-drilled Grommet Hole Installation

Mark the position of the hole on your mounting surface. Drill a 3/8" (10mm) diameter hole at the marked position through the mounting surface. Insert the assembled Bolt **I** through the desk hole, guide the Support Plate **J** and Nut **H** through the Bolt **I**, rotate the Nut **H** clockwise to fasten for stability.

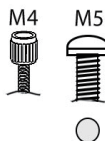


Step 2

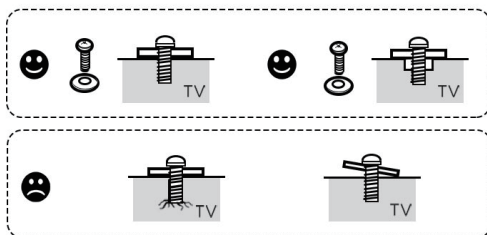
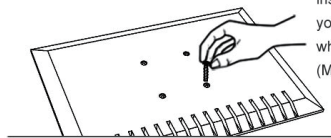
Step 2.1

Select TV Screws

Only one screw size fits your TV

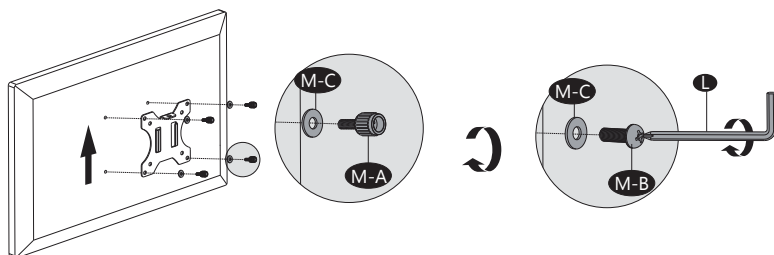


Hand thread screws into the threaded inserts on the back of your TV to determine which screw diameter (M4 or M5) to use.



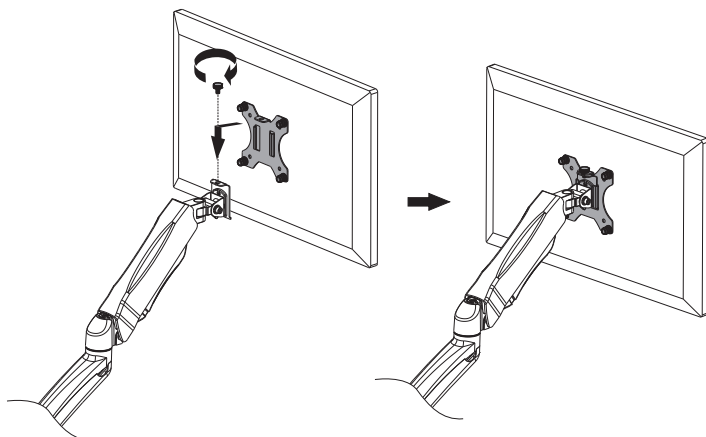
Step 2.2

Attach the VESA Plate to your TV/Monitor, and thread M4x12 Bolt **M-A** or M5x12 Bolt **M-B** into the mounting holes with D5 Washer **M-C**, tighten with Allen Key 5mm **L**.



Step 3

Put the assembled TV/Monitor onto the Arm **A** and ensure the stability, tighten the VESA plate using Top Screw.

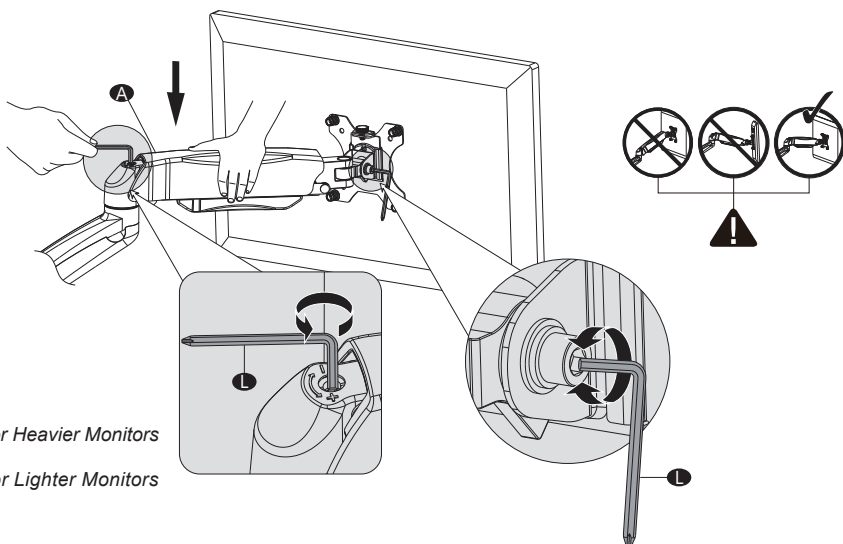


Step 4

Press the Arm **A** on horizontal level as image shown, adjust gas spring tension to your personal preference using Allen Key 5mm **L**, adjust the tilt tension using Allen Key 5mm **L**.

Adjust the Gas Spring Tension

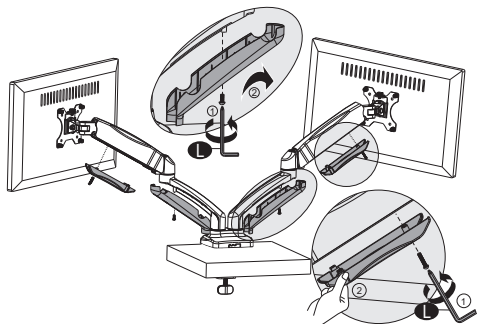
- Insert the 5mm Allen Key into the adjusting hole and turn clockwise (-) to reduce gas spring tension, suitable for lighter screens.
- Insert the 5mm Allen Key into the adjusting hole and turn counter-clockwise (+) to increase gas spring tension, suitable for heavier screens.
- Please take note it may take numerous turns for gas spring tension adjustment.



- For Heavier Monitors
 For Lighter Monitors

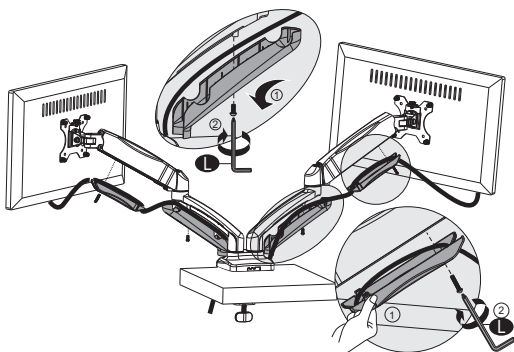
Step 5

Screw out the bolts and take off the cable cases with Allen Key 5mm ①.



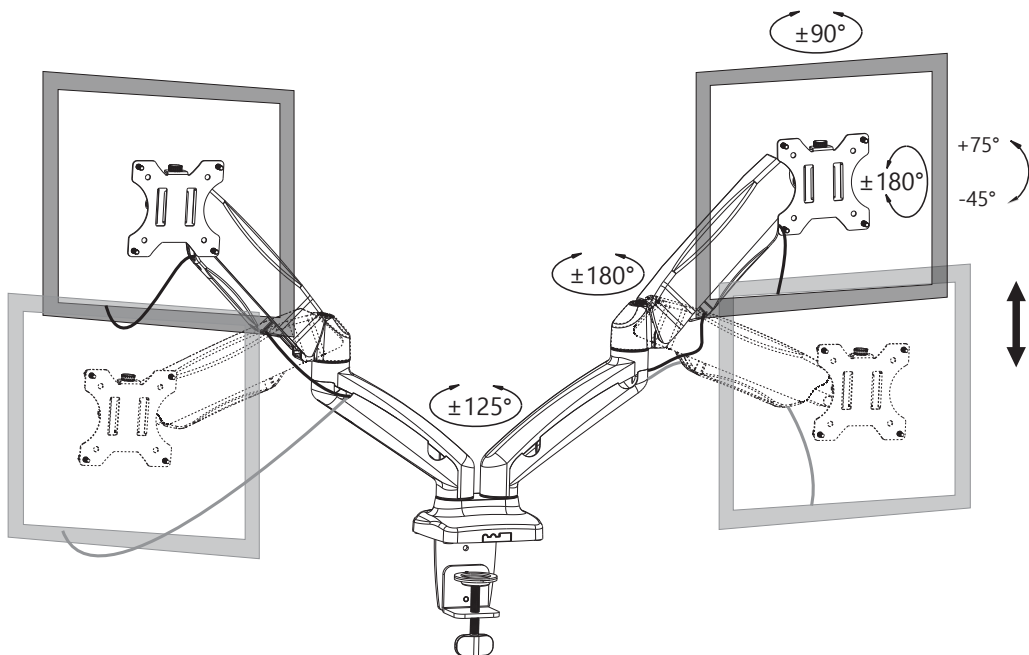
Step 6

Guide the cables through and put the cable cases back.



Step 7

Manually swivel, tilt, and rotate the monitor for the best viewing angle.





Thank you for choosing us!

We support the technology that brings your home to life.
We offer high quality products, professional customer service,
and extensive technical support.

If you have any questions, please contact us.

 1-844-SATTLER (18447288537)

 support@wallelectric.com

 www.wallelectric.com