

108mm

76mm



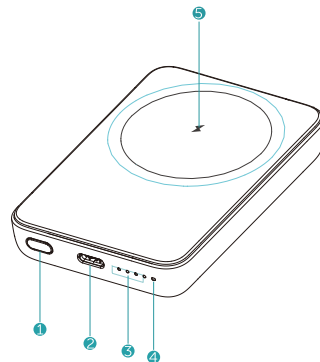
# User Manual

## Magnetic Wireless Power Bank

Model: W11

Thank you for purchasing our Magnetic Wireless Power Bank.  
Please read this User Guide thoroughly before use and retain it for future reference.

### Illustration

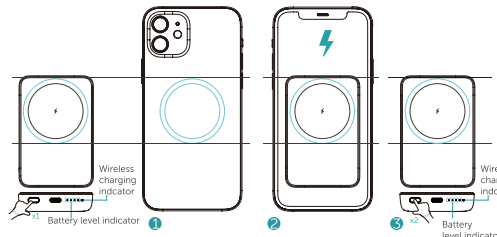


- ① Power button(Turn ON/OFF)
- ② Type-C Port
- ③ Battery Level Indicator
- ④ Wireless Charging Indicator
- ⑤ Magnetic Inductive Area

### Operating Instructions

#### Charging exclusively the iPhone 12 Series

- 1.Before using the wireless charging function, you need to press the power button once. When the blue breathing light is on, it indicates that the wireless charging function is successfully turned on.
- 2.Place your iPhone 12 on the charger as illustrated below and it will be held in place magnetically. The wireless charging indicator will turn solid blue, indicating it is charging your phone.
- 3.Double press the power button to turn off the wireless after charging completed or disconnect the device with product, wireless will turn off after 3 min.



- Note:**
- 1.Please remove the mobile phone protective case (except the magnetic case) before charging. The mobile phone case will affect the magnetic adsorption effect thus affecting the stability of charging.
  2. Please use our NewQ original adapter for the best charging experience.

3. Do not place any foreign objects between your device and the wireless charger's surface, including metal pads on a car mount, credit cards, door keys, coins, metal, or NFC cards, which will make wireless charging fail or cause overheating.

### Specifications

Battery Cell	5000mAh 3.7Vdc/18.5Wh
Dimension	93mm*62.5mm*15.8mm
Weight	132g/4.65oz
USB-C Input	10W 5V ⎓ 2A
USB-C Output	10W 5V ⎓ 2A
Wireless Output	7.5W Max

### Important Safety Instructions

- When using this product, basic precautions should always be followed, including the following:
- Do not use an adapter with output of 5V/1A (5W) or less.
  - Do not store the product in a hot or humid environment.
  - Operating temperature should be between 0°C to 25°C / 14°F to 77°F.
  - Do not disassemble the product. Take it to a qualified service person when service or repair is required. Incorrect reassembly may result in a risk of fire or injury to persons.
  - Do not dispose of the product in heat or fire.
  - Do not clean the product with harmful chemicals or detergents.
  - Misuse, dropping or excessive force may cause product damage.

- When disposing of secondary cells of batteries, keep cells or batteries of different electrochemical systems separate from each other.
- Be aware discharged battery may cause fire or smoke, tape the terminals to insulate them.

### FCC Statement

This device complies with Part 15 of the FCC Rules. Operation is subject to the following two conditions:  
(1) This device may not cause harmful interference, and  
(2) this device must accept any interference received, including interference that may cause undesired operation.

**Warning:** Changes or modifications not expressly approved by the party responsible for compliance could void the user's authority to operate the equipment.

**Note:** This equipment has been tested and found to comply with the limits for a Class B digital device, pursuant to Part 15 of the FCC Rules. These limits are designed to provide reasonable protection against harmful interference in a residential installation.

This equipment generates, uses, and can radiate radio frequency energy and, if not installed and used in accordance with the instructions, may cause harmful interference to radio communications. However, there is no guarantee that interference will not occur in a particular installation. If this equipment does cause harmful interference to radio or television reception, which can be determined by turning the equipment off and on, the user is encouraged to try to correct the interference by one or more of the following measures:

- Reorient or relocate the receiving antenna.
- Increase the separation between the equipment and receiver.
- Connect the equipment into an outlet on a circuit different from that to which the receiver is connected.
- Consult the dealer or an experienced radio / TV technician for help.

### Customer Service

- ✔ 30 days no-reason refund, 12 months limited warranty
  - ✔ Lifetime Technical Support
- For any questions, Please feel free to contact us via [newqdirect@sina.com](mailto:newqdirect@sina.com), we will reply within 24 hours.

### Manufacturer

**Manufacturer:**  
Shenzhen Qianwen Electroncs Co.,Ltd.

**Address:**  
Room 208, Building 20,Xiangnan 4th Road,Minzhi Street,Longhua District,Shenzhen,China

**NewQ Service Email:**  
[newqdirect@sina.com](mailto:newqdirect@sina.com)

**NewQ After-sales Service Email:**  
[newqdirect@sina.com](mailto:newqdirect@sina.com)