

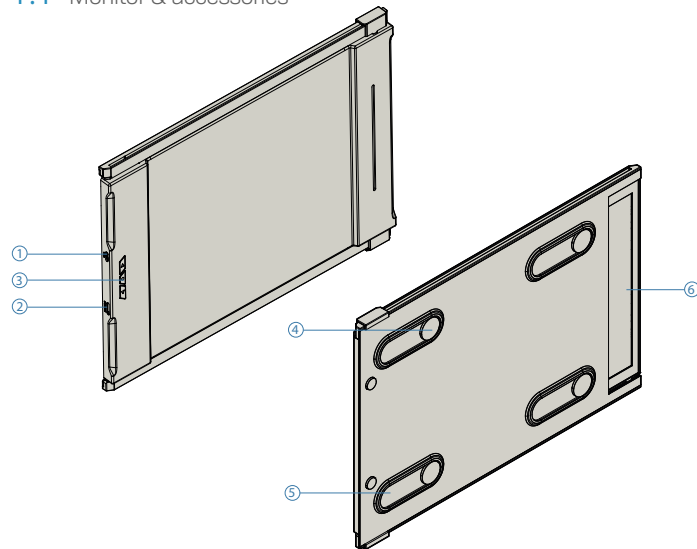
NEXUS 13

Portable Laptop Monitor

User Guide ►

1 Package overview

1.1 Monitor & accessories

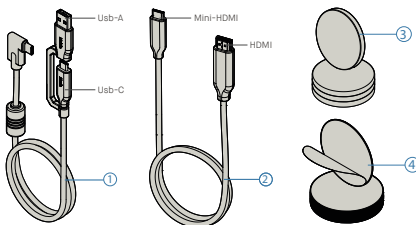


NEXUS 13

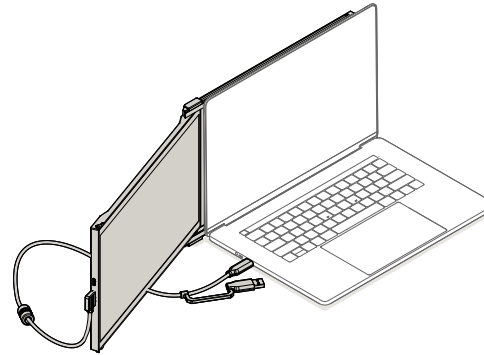
- ① Usb Type-C Port
- ② Mini HDMI Port
- ③ Menu Buttons
- ④ Magnetic Plates
- ⑤ Metallic Plates
- ⑥ Screen

Accessories

- ① USB Type-C cable with USB-A to C adapter
- ② HDMI Cable
- ③ Magnetic Plates
- ④ Adhesive stickers

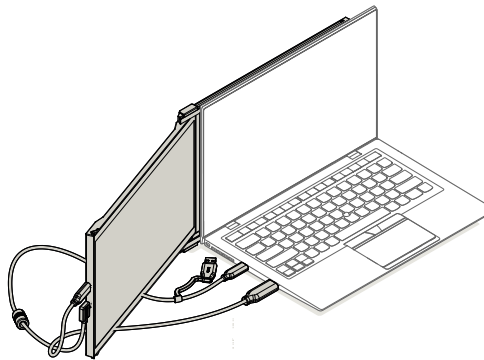


2 Connection Options



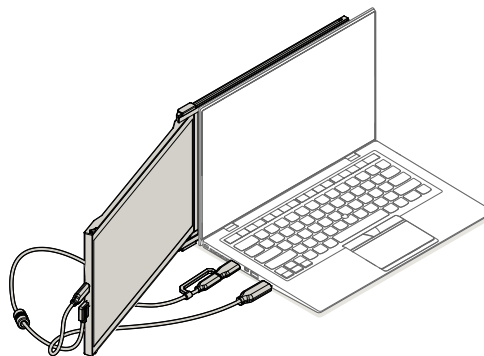
Using only USB-C to C cable

Note: For laptop has USB-C port with DP ALT mode



Using USB-C to C cable with HDMI cable

Note: For laptop has USB-C port without DP ALT mode

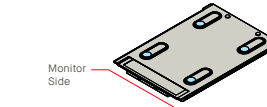


Using USB-C to C cable and Type-A adapter with HDMI cable.

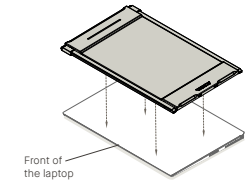
Note: For laptop has only USB-A and HDMI port

3 Monitor positioning guide

3.1 Attachment mode

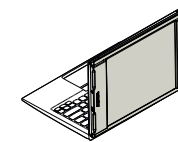


1. Place the magnetic plates towards the monitor side and remove the adhesive stickers.

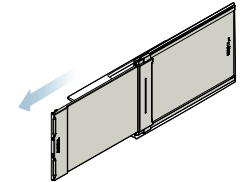


Front of the laptop

2. Make sure that NEXUS 13 is centered in the back of the laptop

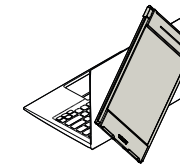


3. Open the laptop monitor.

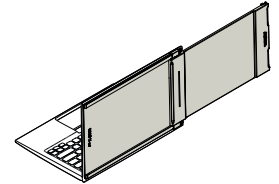


4. Slide NEXUS 13 and swivel the screen.
*USB Cable omitted

3.2 Rotated monitor

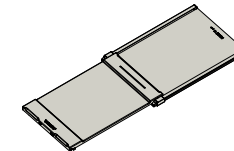


1. To use it on the other side, rotate 180 degrees. Snap into the back of the laptop.

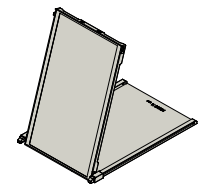


2. Slide it and you are ready to work.

3.3 Portrait Mode

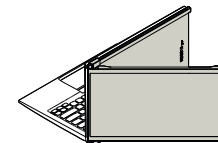


1. Slide NEXUS 13 Rotate around 110° degrees

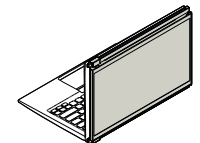


2. Connect NEXUS 13 to the Pc and use it in portrait mode Go to Display settings to rotate display
*USB Cable omitted

3.4 Presentation Mode



1. Slide NEXUS 13 and rotate it



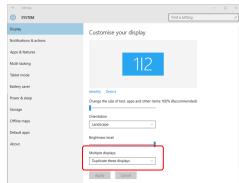
2. To access presentation mode, simply swivel NEXUS 13 180 degrees to the back of the laptop.
*USB Cable omitted

4 Display Settings

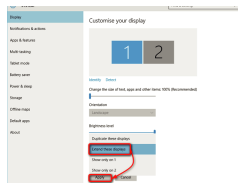
4.1 Duplicate Mode to Extend Mode for Windows

-Right click on your desktop while NEXUS 13 is connected and choose "Display Setting"
-Then you should either see this screen or the one at next Section

-If you have a duplicate screen and want to change it to extend mode, click on the "Duplicate these displays" from the drop down box



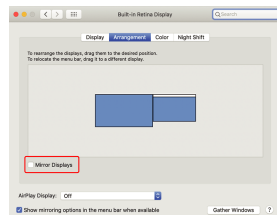
-When the drop down box is opened, choose "Extend these displays"
-Then click "Apply"
-Now you are in Extend Mode



4.2 Duplicate Mode to Extend Mode for Mac OS

- Click on system preference and go to Displays

- Checking the "Mirror Displays" box will switch between duplicate and extend mode for NEXUS 13



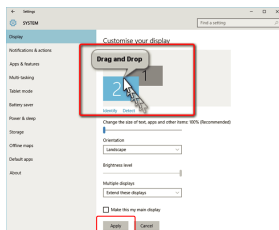
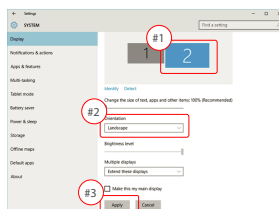
4.3 Rotate Display and Layout set up for Windows

If you are already in "Extend mode" and want to use NEXUS 13 on the left

1. First click on the 2nd screen icon
2. Then open the Orientation drop down box and change it from "Landscape" to "Landscape (flipped)"; Choose "Portrait" for Portrait Mode".
3. Then click "Apply"

-Now your screen is upside down and ready to be use on the left with 1 extra step.

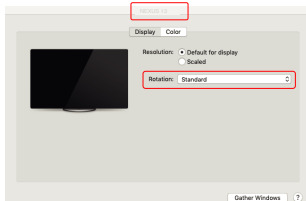
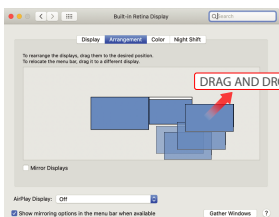
-Move the 2nd display icon from the right to the left of the 1st display by simply "Drag and Drop" it.
-Click "Apply" to finish the setting of the lay out.



4.4 Rotate Display and Layout set up for Mac OS

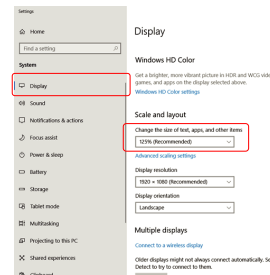
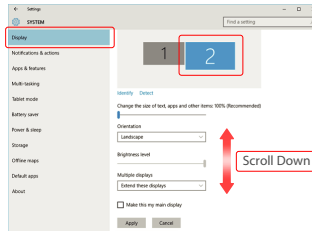
- To position the display on either left or right, simply drag and drop it to the side you want.

- To rotate the display, go to the NEXUS 13 display window and choose the suitable "Rotation" options.



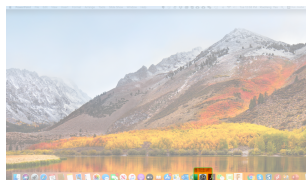
4.5 Change Display Settings to Adjust Content Size for Windows

- 1 To adjust content size on NEXUS 13 monitor, first click on the number "2" monitor under Display setting.
2. Scroll down and look for "scale and layout" options
3. Default size of text is set at 125% and user can increase it up to 175% or reduce back to 100% base on user preference.

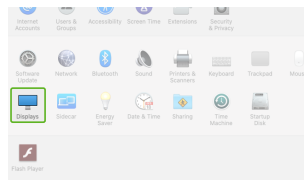


4.6 Change Display Settings to Adjust Content Size for Mac OS

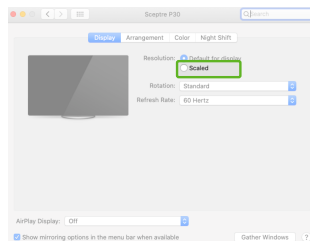
1. Click System Preferences



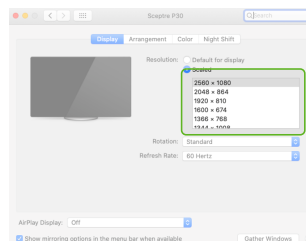
2. Click Displays



3. Hold down "Option" key and click "Scaled"



4. Select the resolution that fits your need



5 Technical Information

Model	NEXUS 13
Size	13.3 In
Weight	1.3 Lbs
Thickness	0.60 In
Thinnest	0.25 In
Hybrid Signals	Yes
Eye-Care Mode	yes
Auto-Rotation	Yes
Nintendo Switch	Yes
Android Phones	Yes

*Specifications are subject to change without notice.

5.2 Safety and Handling

IMPORTANT SAFETY INFORMATION

Carefully go through the user manual and other documentation before setting up the NEXUS 13. If any part is broken or damaged, do not try to open NEXUS 13 or attempt to fix it yourself, please contact the retailer, a qualified service technician or email us directly at contact@mobilepixels.us. Store NEXUS 13 under appropriate conditions, avoid exposure to extreme heat, moisture and dust. We recommend you to place NEXUS 13 on a stable surface and keep your NEXUS 13 in a sleeve to protect it during transport. Never spill liquid of any kind onto the surface or into the openings of the v. Do not spray any cleaner on the screen to avoid an electric shock. If your NEXUS 13 gets wet, unplug all cables and reconnect till the NEXUS 13 is completely dry. Carefully unplug all cables before cleaning NEXUS 13. Clean with a soft, dry, lint-free cloth. To ensure satisfactory experience, use the NEXUS 13 with recommended display size of your laptop. Please disconnect the cables when you reverse the position of NEXUS 13, decouple the NEXUS 13 from the backplane of your laptop, rotate 180°. About a vector normal to the backplane, and re-couple to the backplane of the laptop computer.

CHOKING HAZARD

NEXUS 13 and accessories contain small parts that may present a choking hazard to small children, please keep them out of reach from small children.

MEDICAL DEVICE INTERFERENCE

The NEXUS 13 contains magnets. The NEXUS 13 also contain components and radios that emit electromagnetic fields. It may interfere with personal medical devices, e.g. pacemakers or defibrillators. Keep a safe distance between the NEXUS 13 and your medical device. Consult a physician or medical device manufacturer for specific details of your medical device. Stop using NEXUS 13 if the interference is observed with your personal medical devices. Items with magnetically-stored data such as credit cards and hard drives may be sensitive to magnetic or electromagnetic fields, hence should be kept at a distance from NEXUS 13.

FCC COMPLIANCE STATEMENT

This device complies with Part 15 of the FCC Rules. Operation is subject to the following two conditions: 1. This device may not cause harmful interference. 2. This device must accept any interference received including interference that may cause undesired operation. Note: This equipment has been tested and found to comply with the limits for a Class B digital device, pursuant to Part 15 of the FCC Rules. These limits are designed to provide reasonable protection against harmful interference in a residential installation. This equipment generates, uses, and can radiate radio frequency energy, and if not installed and used in accordance with the instructions, may cause harmful interference to radio communications. However, there is no guarantee that interference will not occur in a particular installation. If this equipment does cause harmful interference to radio or television reception, which can be determined by turning the equipment off and on, the user is encouraged to try to correct the interference by one or more of the following measures: 1. Reorient or relocate the receiving antenna. 2. Increase the separation between the equipment and receiver. 3. Connect the equipment into an outlet on a circuit different from that to which the receiver is connected. 4. Consult the dealer or an experienced radio/TV technician for help.