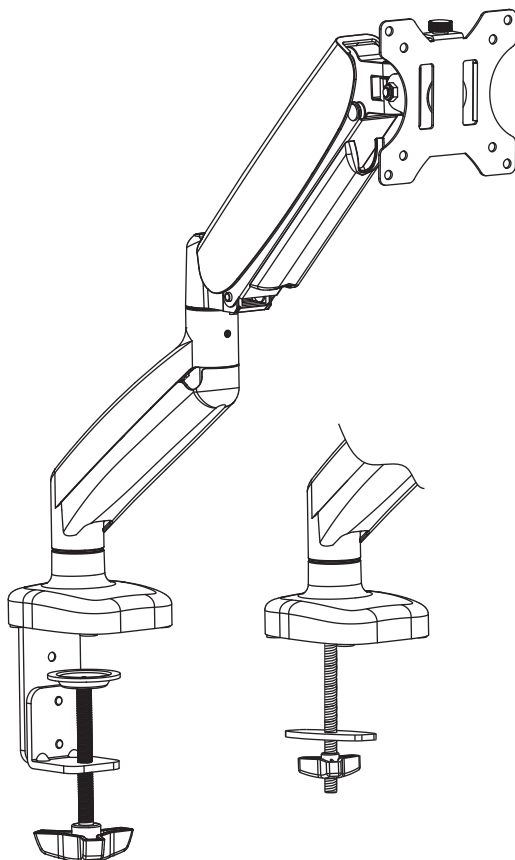


MOUNTUP

Single Monitor Desk Mount

Instruction Manual



MU0004

75x75
100x100

32"

2~8kg
4.4~17.6lbs

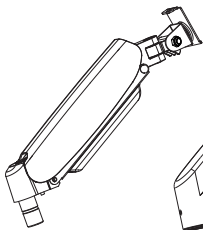
WARNING!

If you do not understand these instructions or have doubts about the safety of the installation, assembly or use of this product, contact Customer Service via help@jollyholding.com.

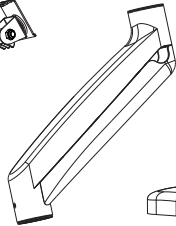
Before starting assembly, verify all parts are included and undamaged. Improper installation may cause damage or serious injury. Do not use this product for any purpose that is not explicitly specified in this manual. Do not exceed weight capacity. We cannot be liable for damage or injury caused by improper mounting, incorrect assembly or inappropriate use.

This product contains small items that could be a choking hazard if swallowed. NOT FOR CHILDREN UNDER 3 YEARS. ADULT SUPERVISION IS REQUIRED.

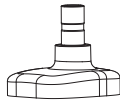
PACKAGE CONTENTS



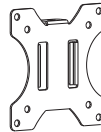
A (x1)
Upper Arm



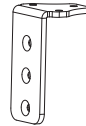
B (x1)
Lower Arm



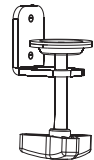
C (x1)
Base



D (x1)
VESA Plate



E (x1)
Bracket



F (x1)
Clamp



G (x5)
M6x10



H (x4)
Pad



I (x1)
Grommet Base



J (x1)
Wingnut



K (x1)
Carriage Bolt



L (x1)
Bolt



M (x1)
Support Plate



N (x1)
3mm Allen Key



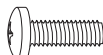
O (x1)
4mm Allen Key



P (x1)
6mm Allen Key



M-A (x4)
M4x12



M-B (x4)
M6x12



M-C (x4)
D6 Washer



M-D (x4)
spacer

NOTE: Not all hardware included will be used.

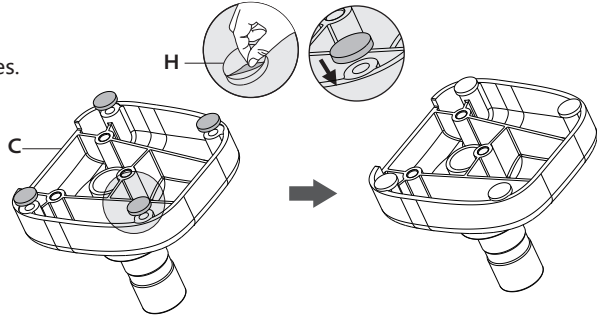


DO NOT EXCEED WEIGHT CAPACITY.

ASSEMBLY STEPS

STEP 1: Apply Pads to the Base Bottom

Apply pads (H) to the base bottom to avoid desk scratches.



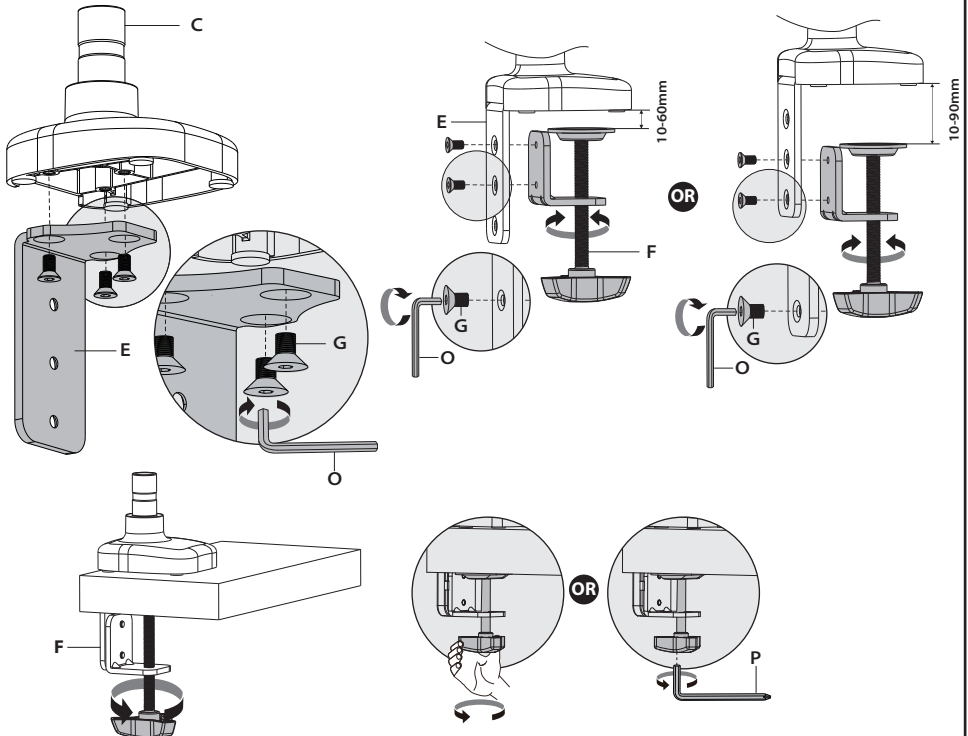
STEP 2: Clamp Installation or Grommet Base Installation

OPTION A: Clamp Installation

Mount Bracket (E) to Base Bottom (C) with Bolts (G). Bolts could be tightened by the 4mm Allen Key (O).

Similarly, attach Clamp (F) to Bracket (E) with Bolts (G) and 4mm Allen Key (O).

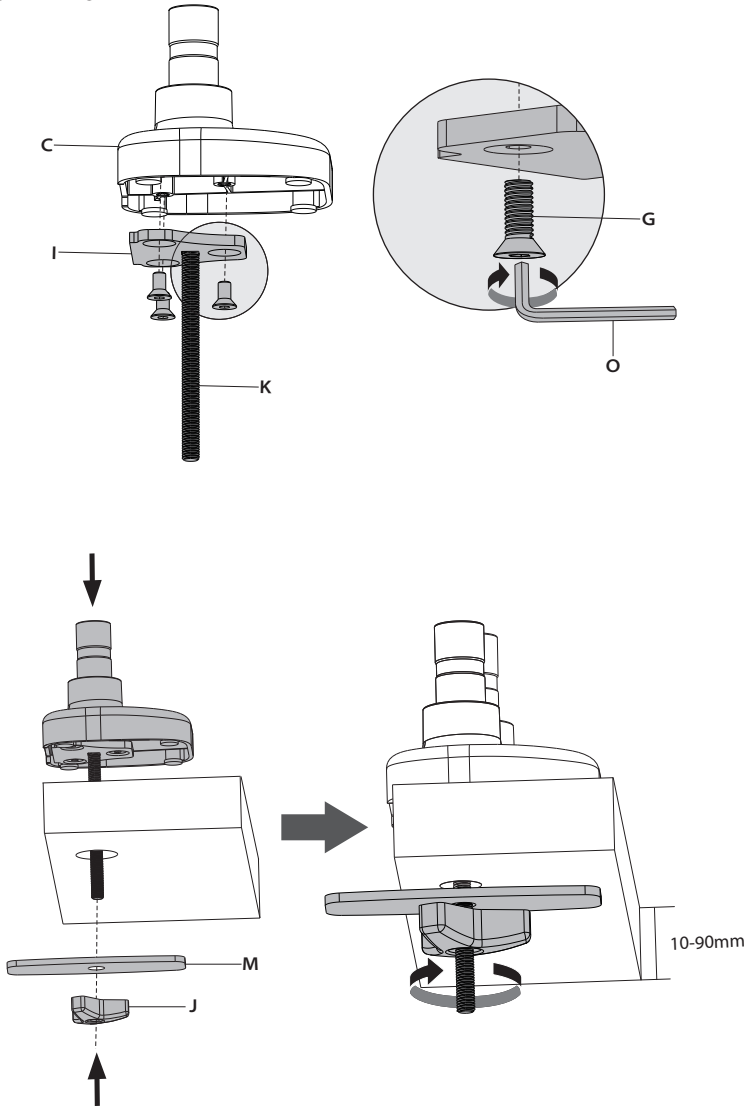
Adjust the Clamp width to fit with desk. Secure stand to desktop by tightening Clamp (F) or by Allen key (P).



STEP 2: (Continued)

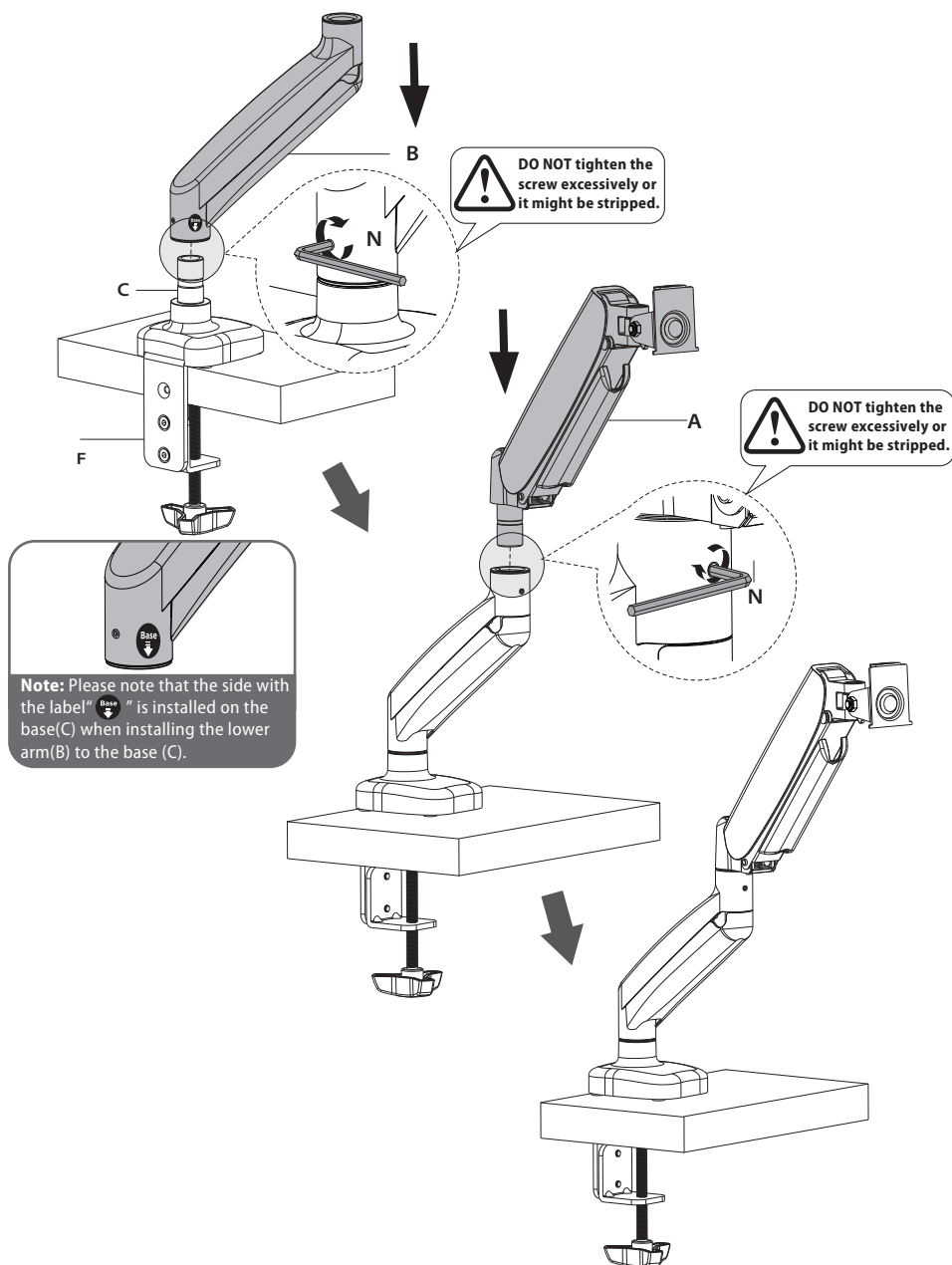
OPTION B: Grommet Base Installation

For grommet hole mounting, place Carriage Bolt (K) through the center of Grommet Base (I). Mount Grommet Base to Base Bottom (C) with Bolts (G) and tighten by 4mm allen key (O). Run Carriage Bolt (K) through Grommet Hole on desktop. Attach Support Plate (M) and Wingnut (J). Last step, tighten Wingnut (J).



STEP 3: Arm Installation

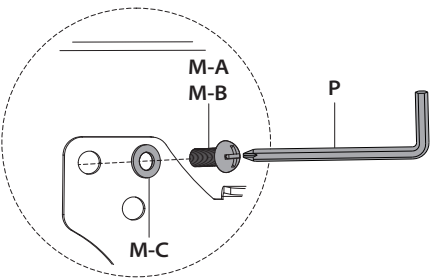
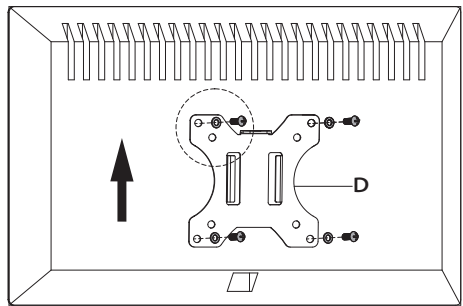
Install the lower arm (B) and the upper arm (A) to the base (C). Secure the arm by tightening the inside screw using 3mm Allen key (N).



STEP 4: Attach Monitor

OPTION A: Flat Back Monitor

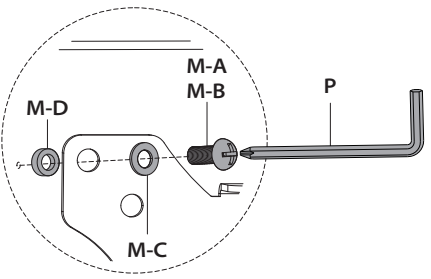
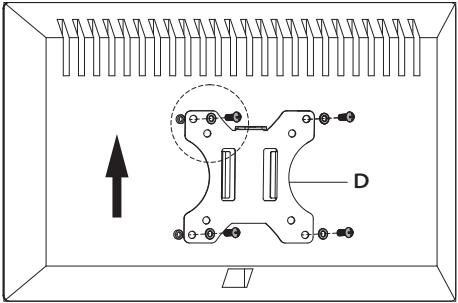
Attach the VESA plate (D) to back of monitor and secure with screws(M-A)or(M-B) with washers(M-C) using 6 mm Allen Key (P). Do not tighten the screws excessively or your monitor might be damaged.



CAUTION:To select the correct screws(M-A or M-B) for your monitor, you can try to screw it on your monitor by hand. The one can screw inside is the correct screw for your monitor.

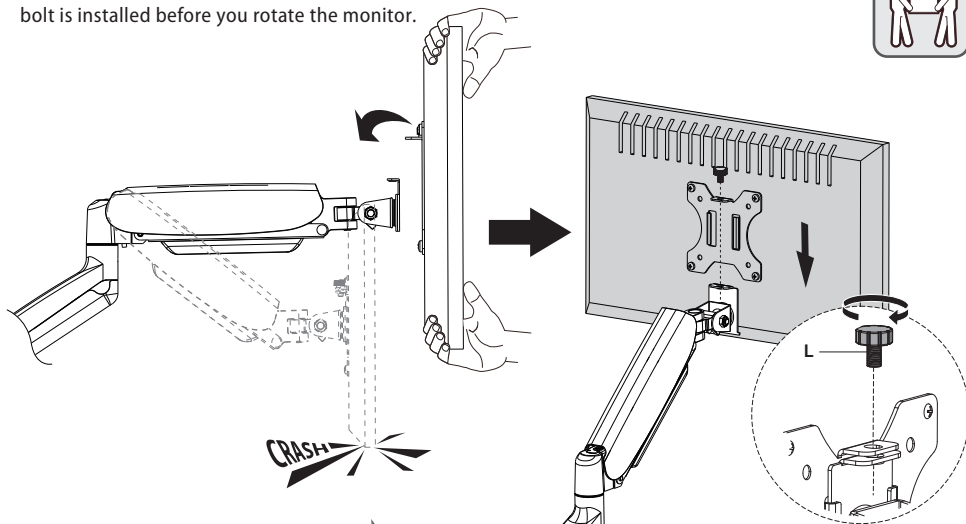
OPTION B: Curved Back Monitor

Attach the VESA plate (D) to back of monitor and secure with screws (M-A) or (M-B) with washers (M-C) and spacers(M-D)using 6 mm Allen Key (P). Do not tighten the screws excessively or your monitor might be damaged.



STEP 5: Hang Monitor

Slide the monitor onto the head of swivel arm, install the security bolt (L). Make sure the security bolt is installed before you rotate the monitor.

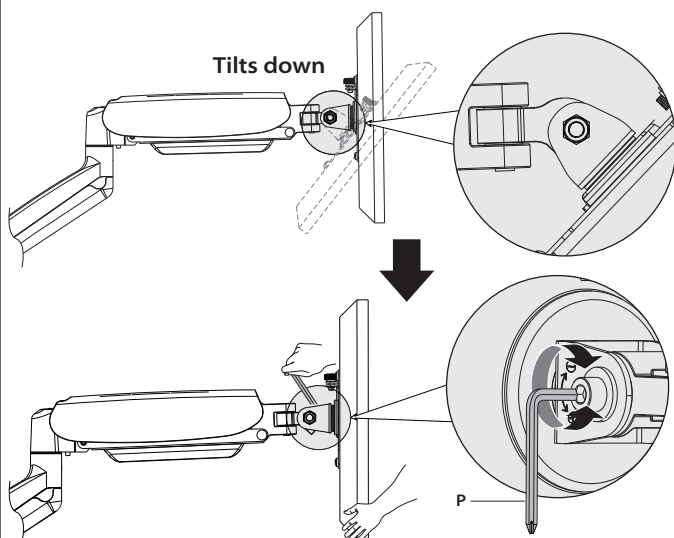


Important Notice:

The gas spring tension is pre-set to the weakest level by default, please hold your monitor by both hands and do not let go so soon after the VESA plate is attached to the swivel arm. It's suggested to loose hold of the monitor in a slow & gentle way while observing if the gas spring arm falls down greatly.



Refer to below illustrations to adjust tilting angle of your monitor.

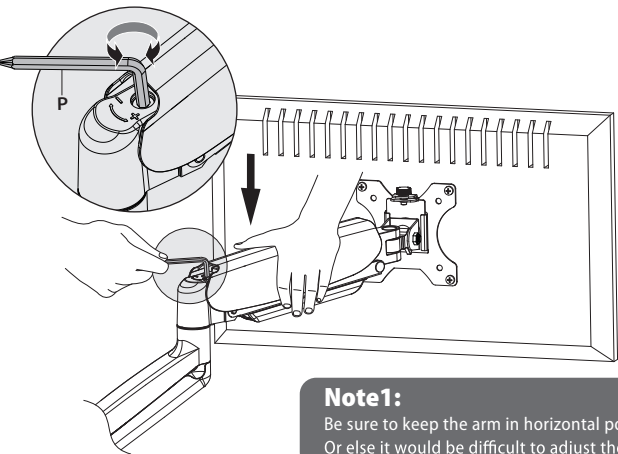


Note:

1. Loosen the tilting bolt.
2. Adjust monitor to your desired tilting angle.
3. Retighten the tilting bolt to fix the tilting angle.

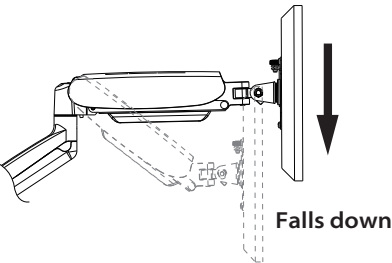
STEP 6: Adjust Tension

For proper functioning of this mount, depending on different weight of monitor you might need to adjust tension in upper arm (A) using 6 mm allen key (P).



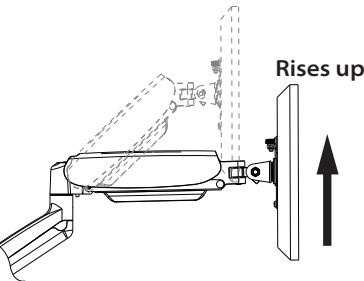
Note1:

Be sure to keep the arm in horizontal position during adjustment. Or else it would be difficult to adjust the mount or damage the mount.



After being attached to the arm, the monitor falls down and can not stay at the desired height by itself.

Turn counter-clockwise(“+”direction) to increase gas spring tension until the monitor can stay at the desired height by itself.



After being attached to the arm, the monitor rises up and can not stay at the desired height by itself.

Turn clockwise(“-”direction) to reduce gas spring tension until the monitor can stay at the desired height by itself.

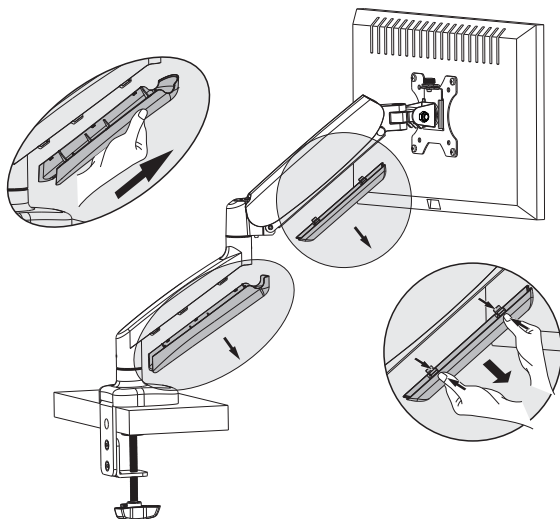
Note2:

As for how many circles the screw should be turned, the table below is for reference.

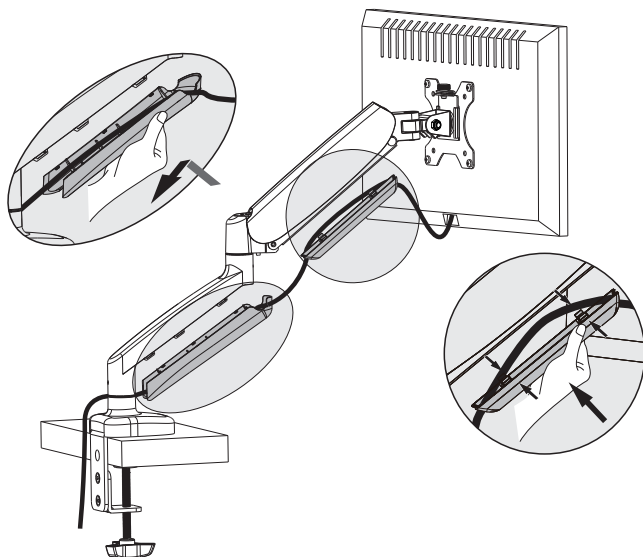
Monitor Weight	2kg	3kg	4kg	5kg	6kg	7kg	8kg
Circles (AT LEAST)	min	1	4	8	11	14	17

STEP 7: Cable Management

Remove bottom plastic covers from gas spring arm as shown in diagram.

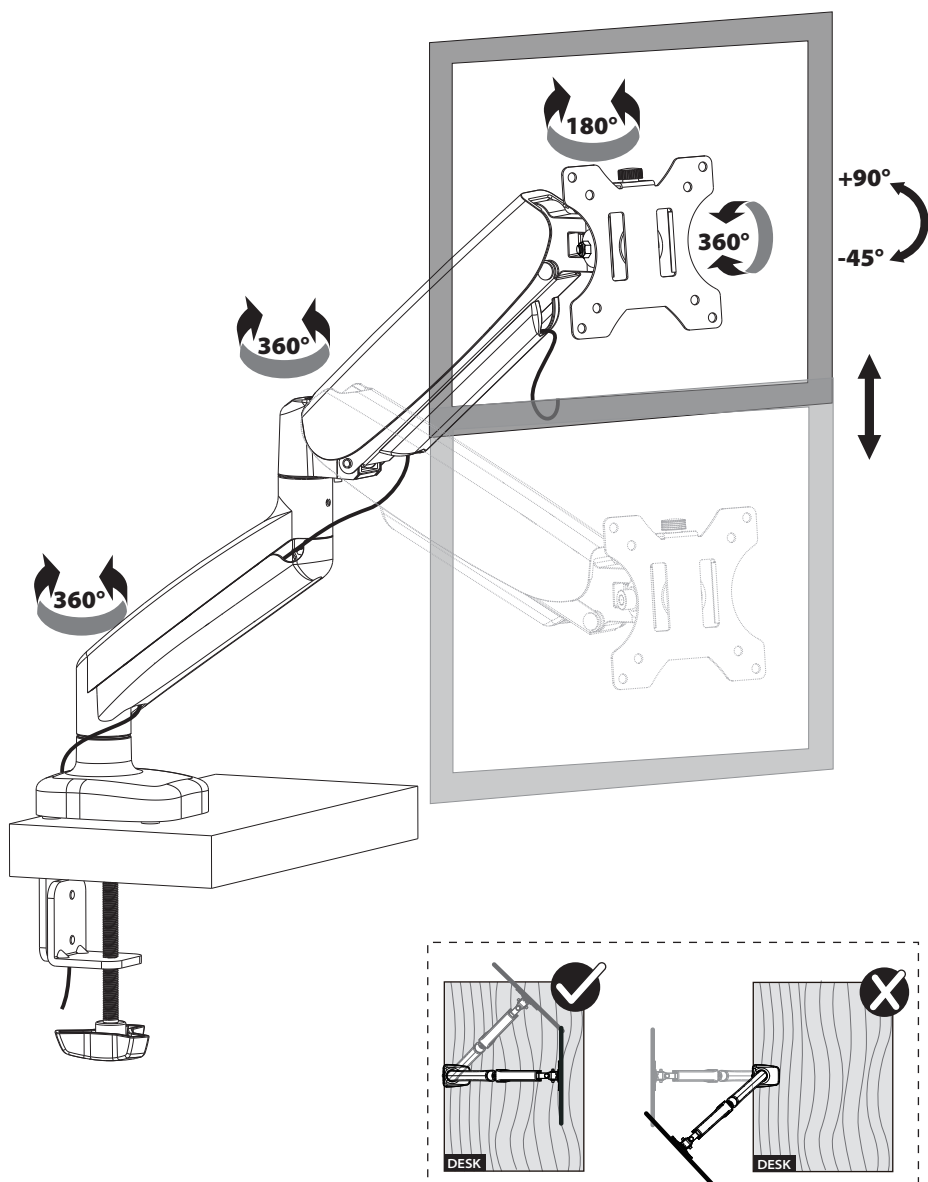


Run cables from monitor through bottom of gas spring arm. Reattach plastic covers as shown in diagram.



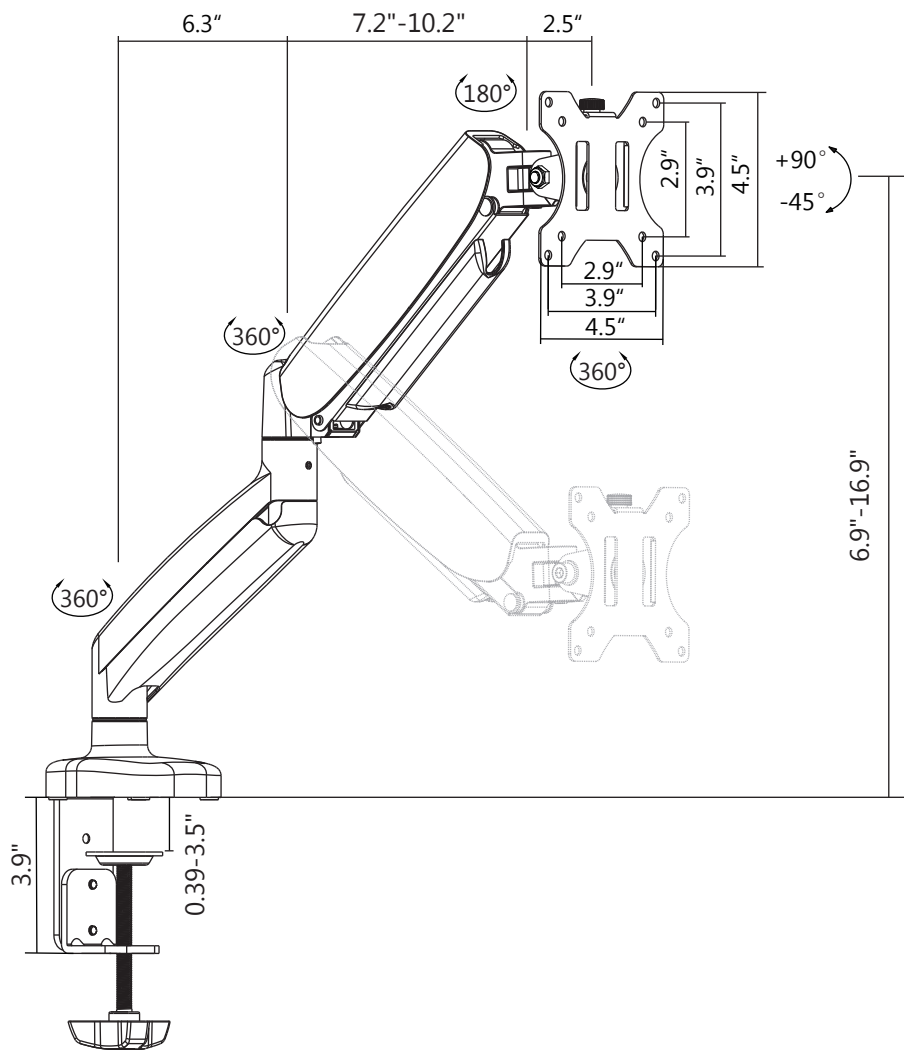
Adjust as Desired

Adjust monitor position and rotation.



Pay attention while clamp install !

Product Dimensions





CAUTION AND MAINTENANCE:

- Never allow children to climb, stand, hang, or play on any part of monitor or stand.
- This product is intended for indoor use only. Using this product outdoors could lead to product failure and personal injury.
- Check that the bracket is secure and safe to use at regular intervals (at least every three months).

MOUNTUP

If you have any questions, please contact us.



help@jollyholding.com