

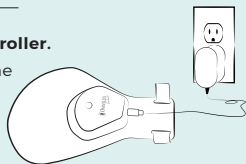


The Omnilux Contour GLOVE is completely portable, meaning you can read a book, cook, clean, or watch TV instead of being bound to an outlet.

## STEP 1

### **Before using your GLOVE, charge the in-unit battery/controller.**

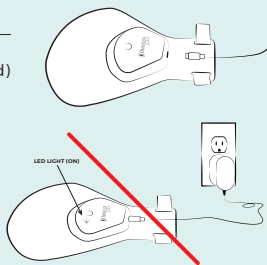
The controller must be charged prior to treatment using the cable and in-unit controller provided with the device.



## STEP 2

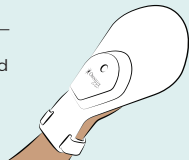
Once fully charged (all 3 charging lights will be illuminated) detach the in-unit controller from the charging cable.

**NOTE:** Please do not charge the in-unit controller with the GLOVE turned on as this may cause damage to the battery.



## STEP 3

To reiterate, the Omnilux Contour GLOVE is operated by the supplied in-unit controller, making it completely portable.



## STEP 4

The device is designed to sit comfortably on your hand. It should feel secure but not overly tight.



## STEP 5

Activate the device by pressing down on the button for one second. Each session is 10 minutes and your device will automatically shut off when the treatment is complete. We recommend using at least 3-5 times per week for 4-6 weeks and then continued maintenance thereafter for all natural, radiant-looking skin!



## STEP 6

Store your GLOVE flat if possible and clean treatment surface as needed with a damp cloth or a nonirritating water-based wipe. For deeper cleaning, wipe gently with 70% alcohol.

