

Installation guide

Check valve

Type OFC



Refrigerant:

For a complete list of approved refrigerants, visit <http://store.danfoss.com/> and search for individual code numbers, where refrigerants are listed as part of product details.

Oil: OFC valve is designed for an oil-free environment

Media Temperature:

Min. 0 °C / 32 °F

Max. 90 °C / 194 °F, short term up to 100°C / 212°F

Max. Working Pressure:

PS/MWP = 23 bar / 334 psig

Contents of accessory box

- Outlet flange for 3 1/8 in. copper tube
- Outlet flange fasteners
- O-ring for outlet flange
- O-ring lubrication (2 gram)
- Additional check valve springs (2 pcs):
 - Yellow spring, for 45° down orientation
 - Red spring, for horizontal orientation

Interface Connections:

Install valve directly on Danfoss Turbocor compressor, picture shown with vertical down installation.

All fasteners and bolts require stainless steel. Bolts with minimum class A2-70.



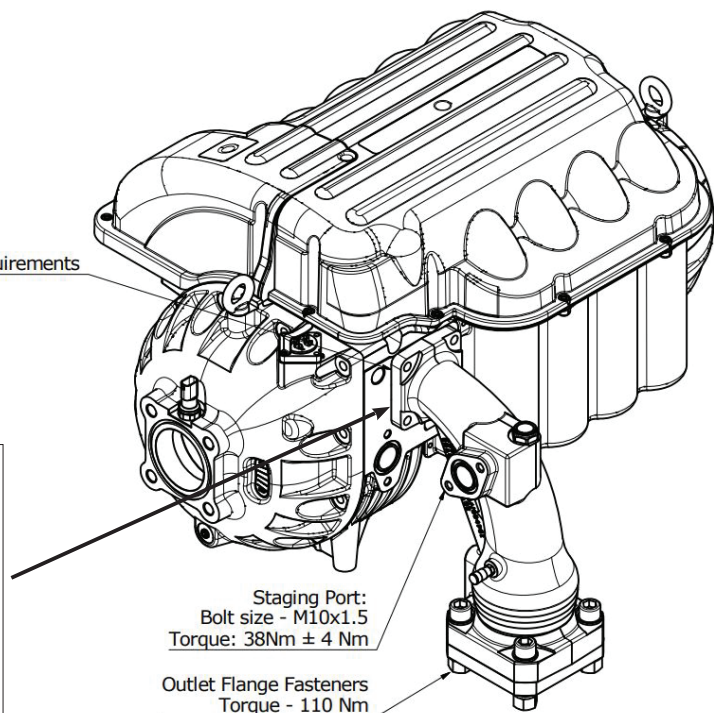
NOTE: Protection of entire valve including steel flange is recommended after installation for outdoor use.

Reference specific compressor requirements



NOTE: refer to check valve orientation options below

Torque: 38 Nm ± 4 Nm



020R5432



020R5432



Імпортёр: ТОВ з іі "Данфосс ТОВ" 04080, Київ 80, п/с 168, Україна

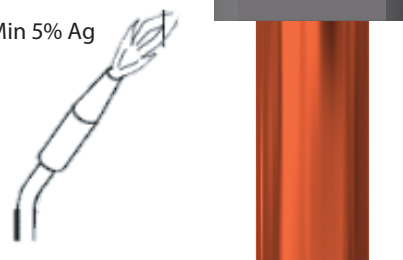
Info for UK customers only: Danfoss Ltd., 22 Wycombe End, HP9 1NB, GB

Outlet Flange Brazing:
Place outer flange on evenly cut copper pipe



NOTE: ensure flange is not mounted on main housing during brazing

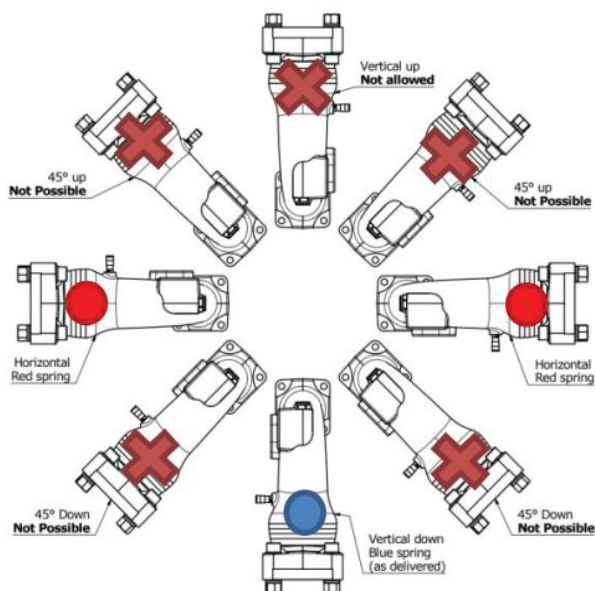
Min 5% Ag



Orientation:



NOTE: Check valve spring must be changed when using any orientation other than vertical downing



When changing check valve spring:

1. Remove check valve insert from main housing
2. Remove check valve head
3. Remove spring and replace with correct color based on intended orientation
4. Replace check valve head and insert
5. Install outlet flange, O-ring and fasteners

Main housing

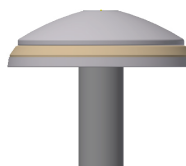


Check valve insert

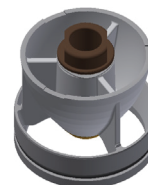


NOTE: Use silicone lubricant spray at O-ring if needed

Check valve head



Check valve spring



Outlet flange,
O-ring and fasteners



NOTE: Apply provided lubrication to O-ring