

# ITZ-JGC



## ZZPLAY

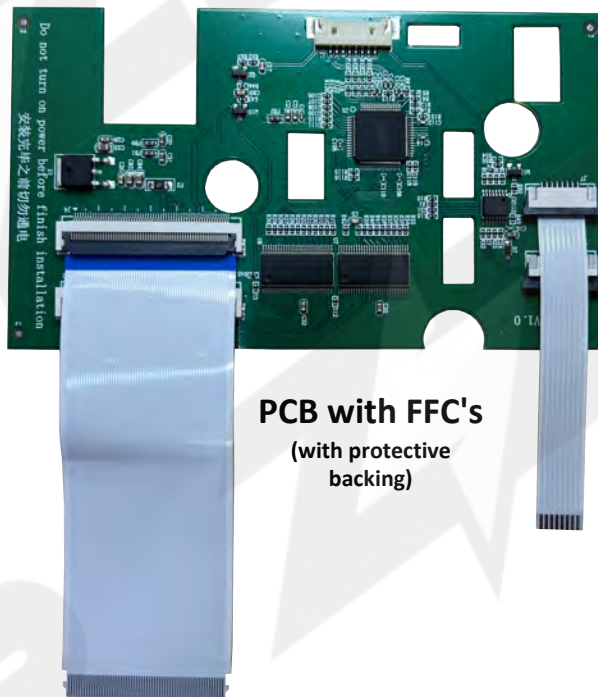
Advanced CarPlay/Android Auto  
integration for Dodge / Jeep vehicles  
equipped with 8" uConnect system



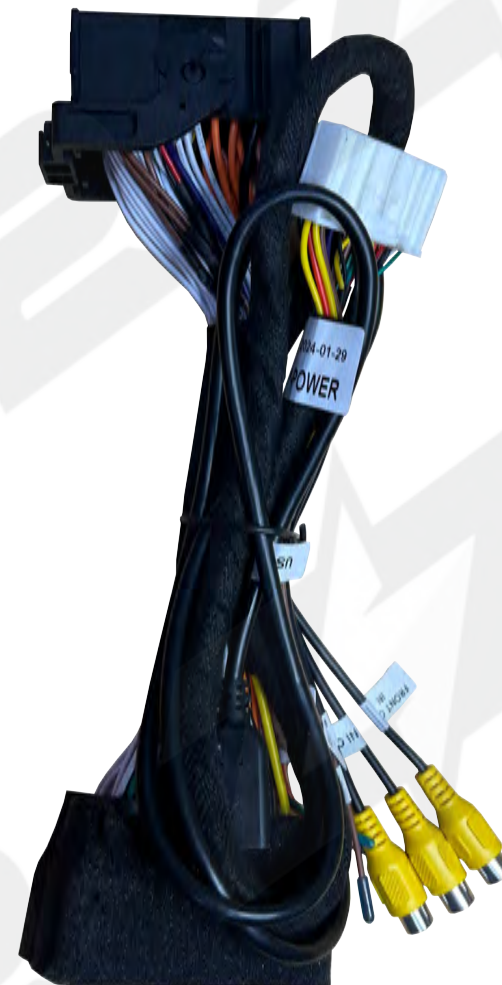
## Kit Components



ZZPlay Interface



PCB with FFC's  
(with protective  
backing)



Main T-Harness



USB Cable  
(optional)



WIFI Antenna



LVDS Cable



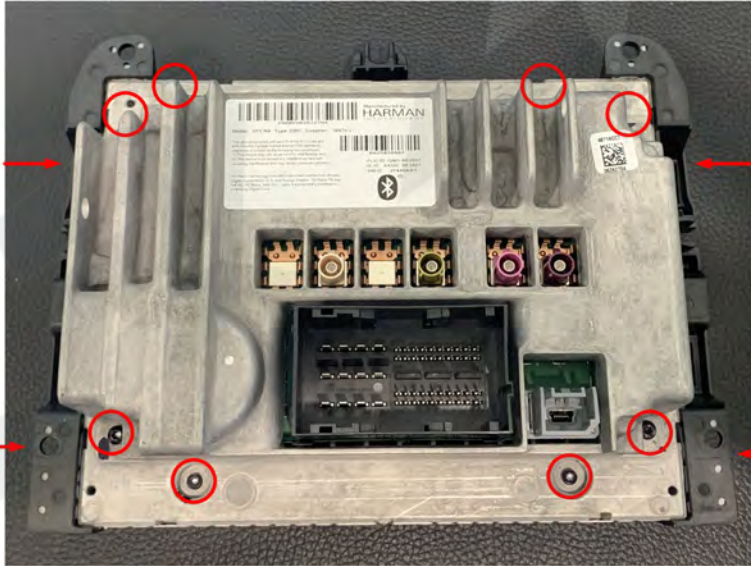
Mounting Velcro



# RA3/RA4 Uconnect Screen Modification

Remove the vehicle from the screen, bring to a bench-top and lay the radio face down on a soft towel or mat to protect from scratches/damage. Tools required for this process: Mirco Torx set & various pick tools.

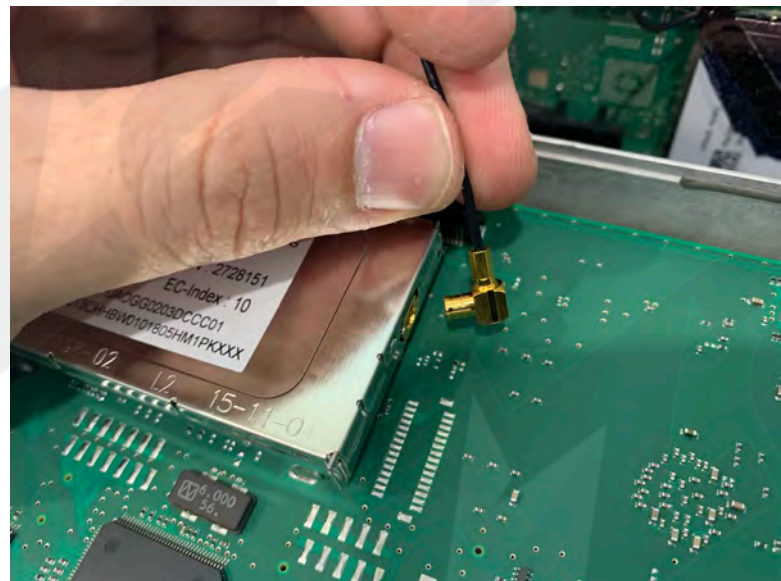
1. Begin by removing (12) Torx screws from the radio. *NOTE: some screws are not shown, but every screw that is accessible from this state must be removed (4 on the side of radio)*



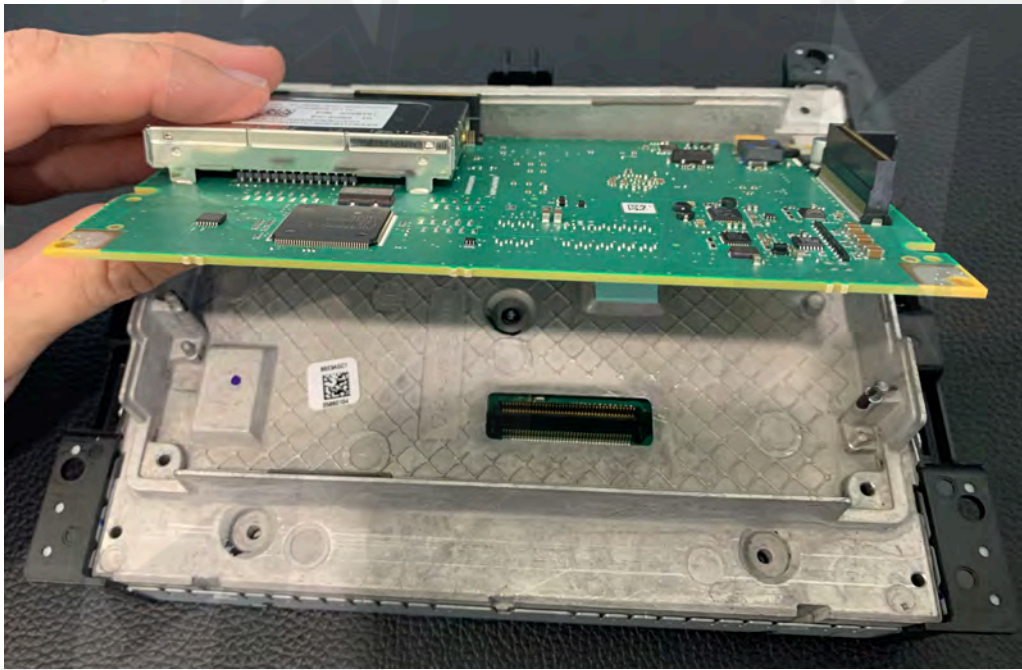
2. Pull up the back half of the radio slowly and carefully, note the small coax cable which must be disconnected in the next step.



3. Using a straight pick tool or small flathead, carefully pry out this SMB antenna cable.

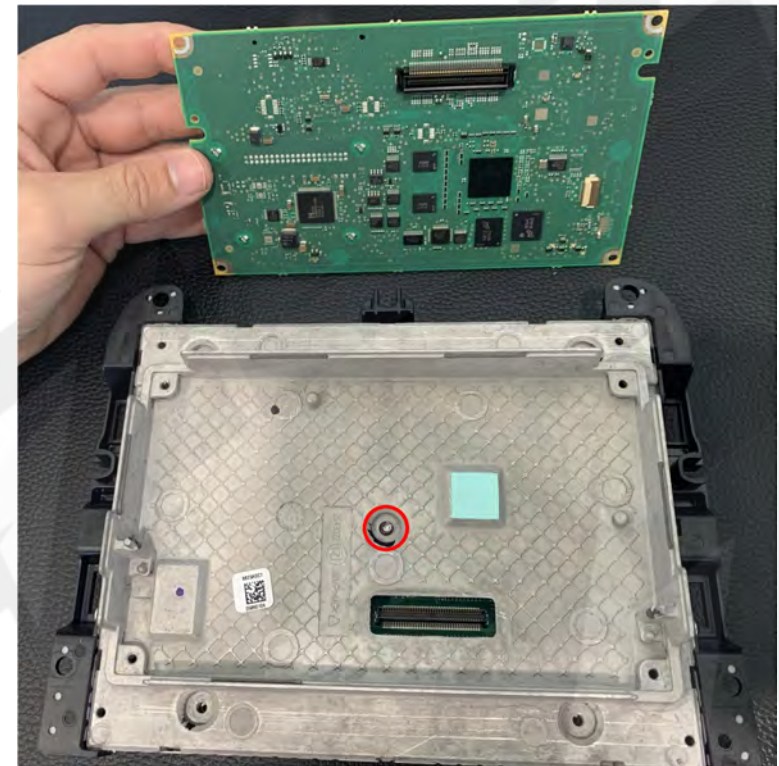




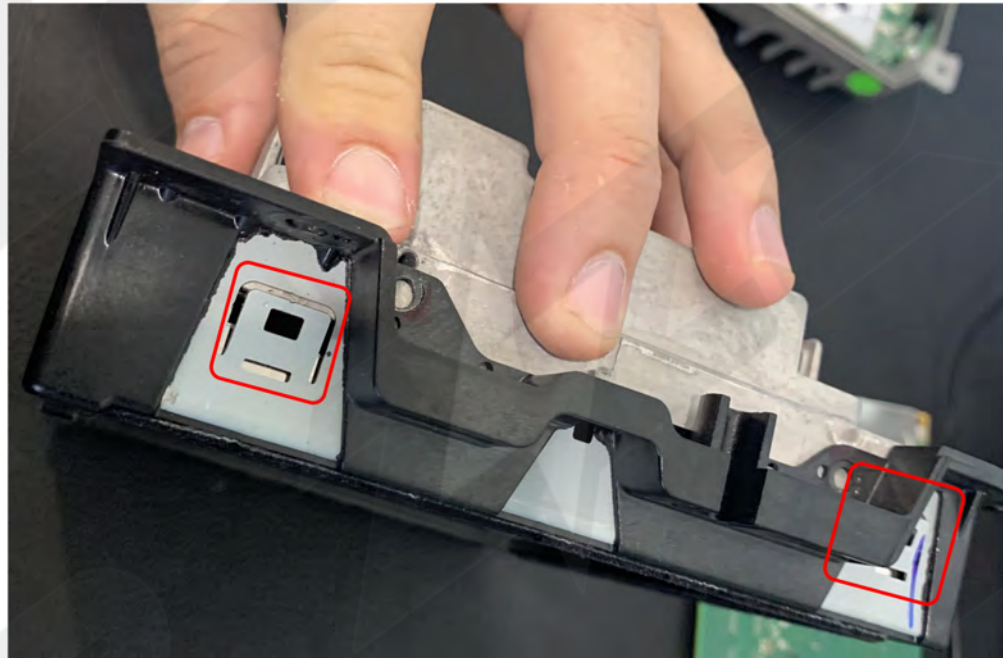


4. Carefully lift up this PCB and place nearby in a safe place.

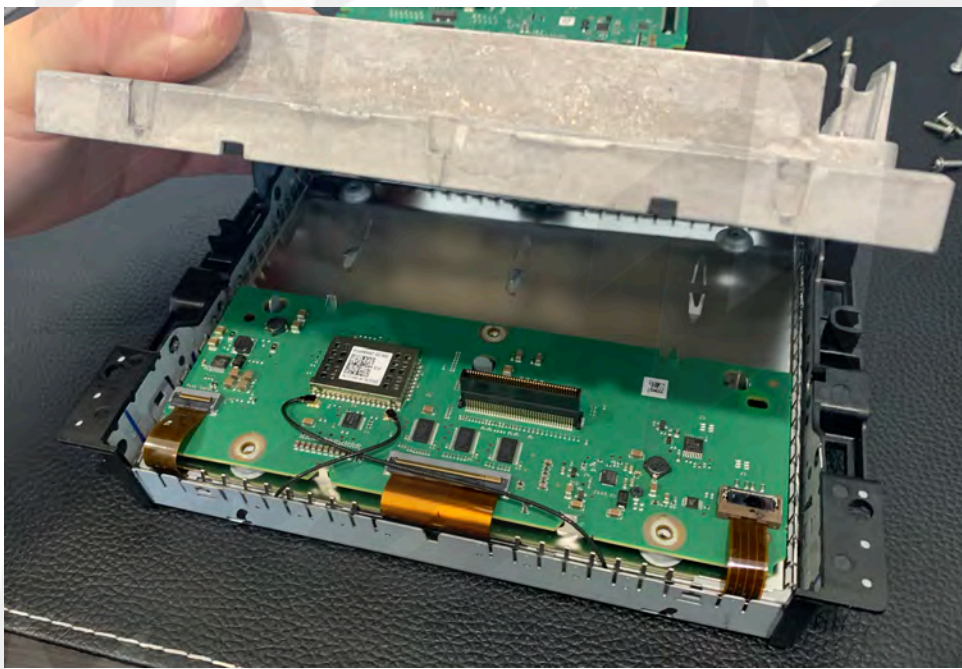
5. Next, remove (1) Torx screw in the center of this metal housing.



6. Next, using a straight pick or small flathead, go around the perimeter of the radio and pry the locking tabs a small bit to free the front LCD frame from the remaining chassis of the radio.



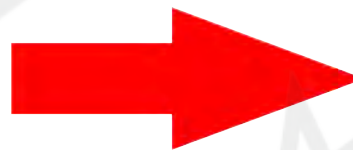
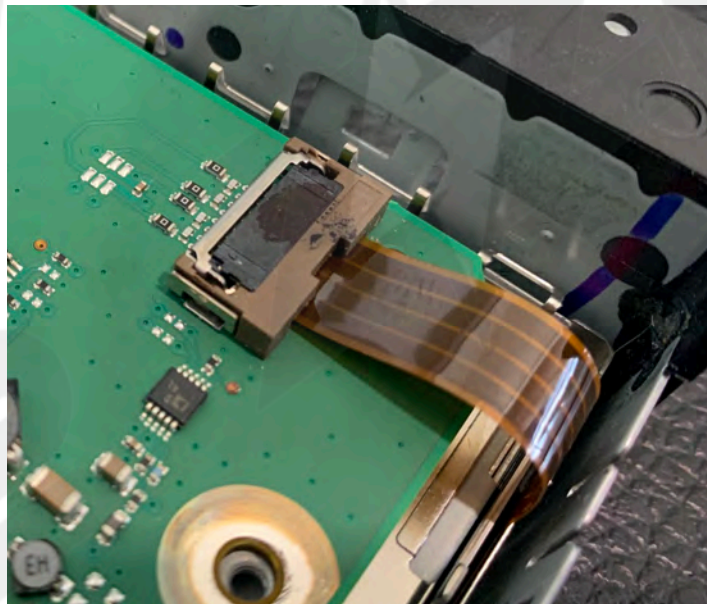




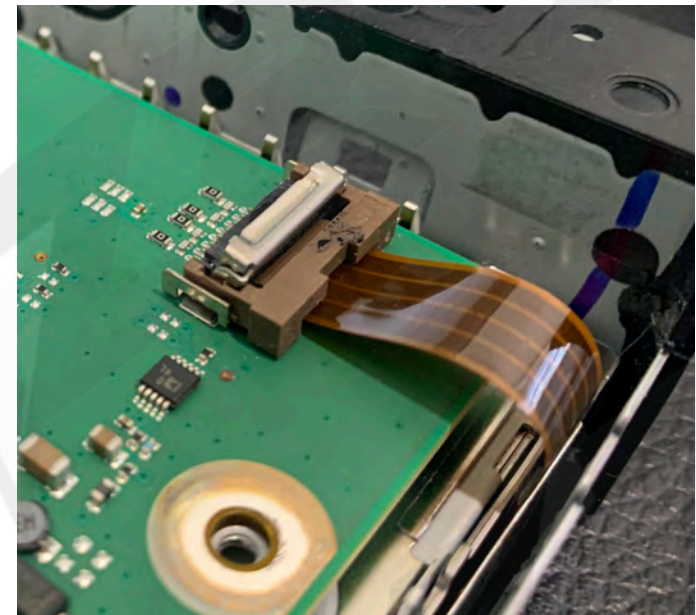
7. Next, carefully pry up the remaining metal chassis from the LCD panel to expose the PCB beneath.



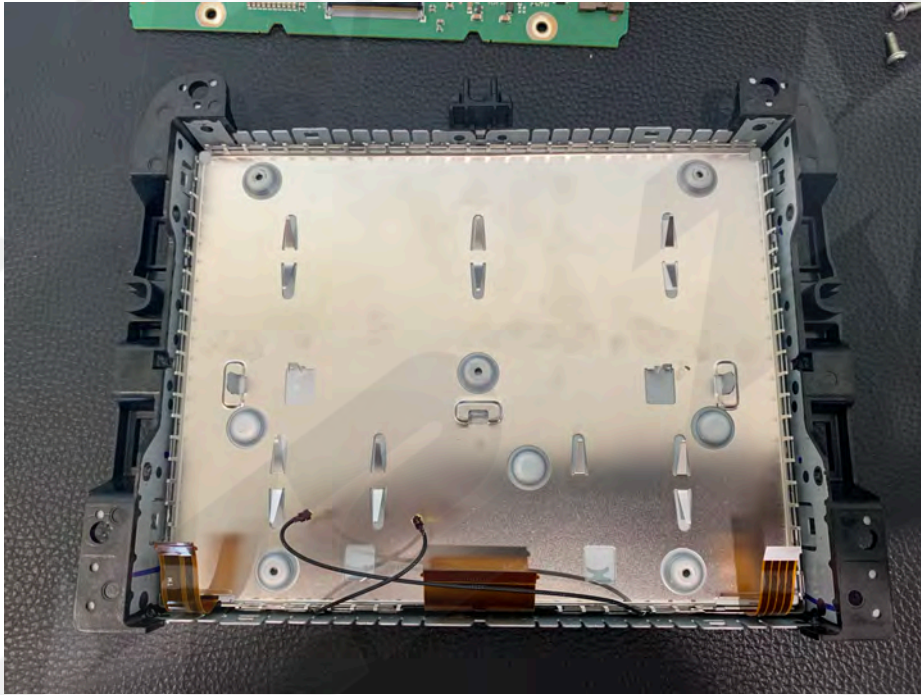
8. Remove (3) FFC Ribbons (red) and (2) coax antenna cables (yellow). See next pictures below for tips.



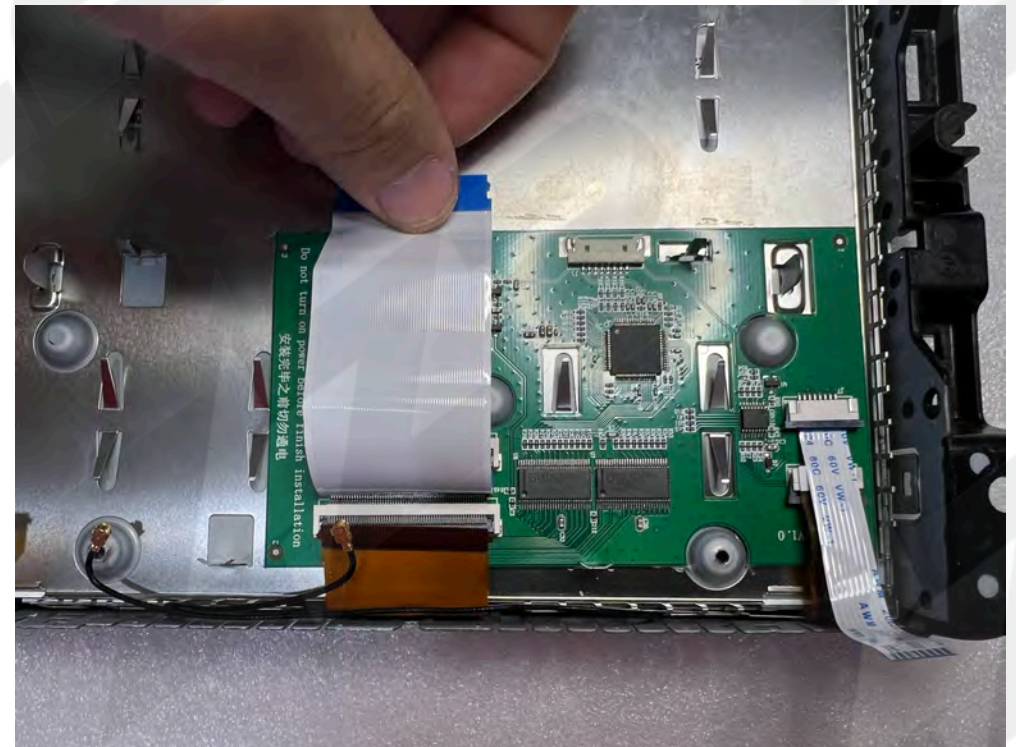
*NOTE: All FFC connectors flip upwards from the ribbon-side except this one connector (with metal backing). For this connector, flip up the metal on the backside forwards (towards you) to release the ribbon.*



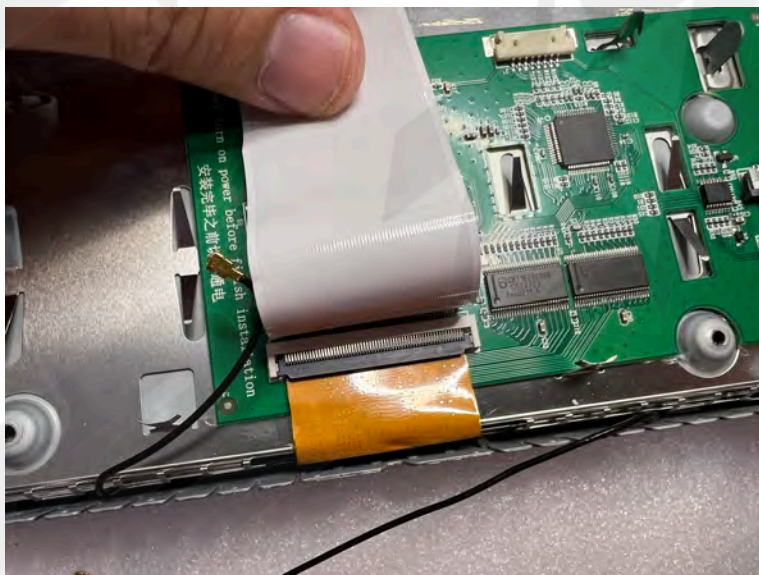




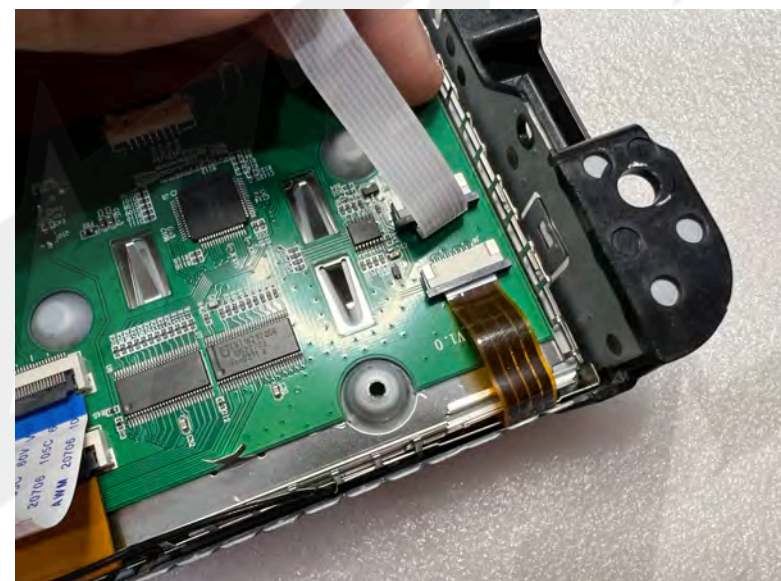
9. Next, remove the OE PCB temporarily.



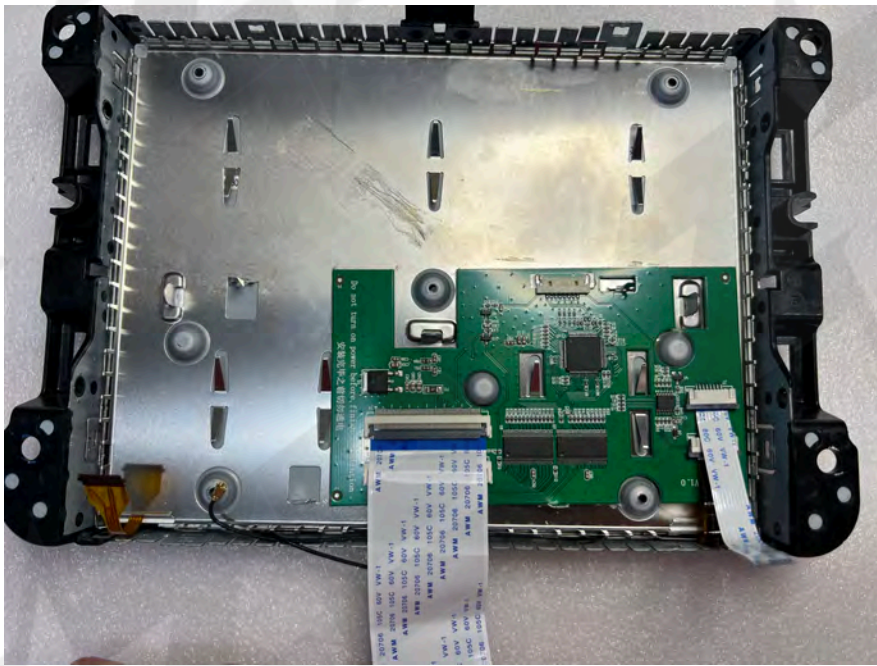
10. Place the provided PCB down (with protective backing) into place - all pegs and screw mounts should pass through and align the board properly.



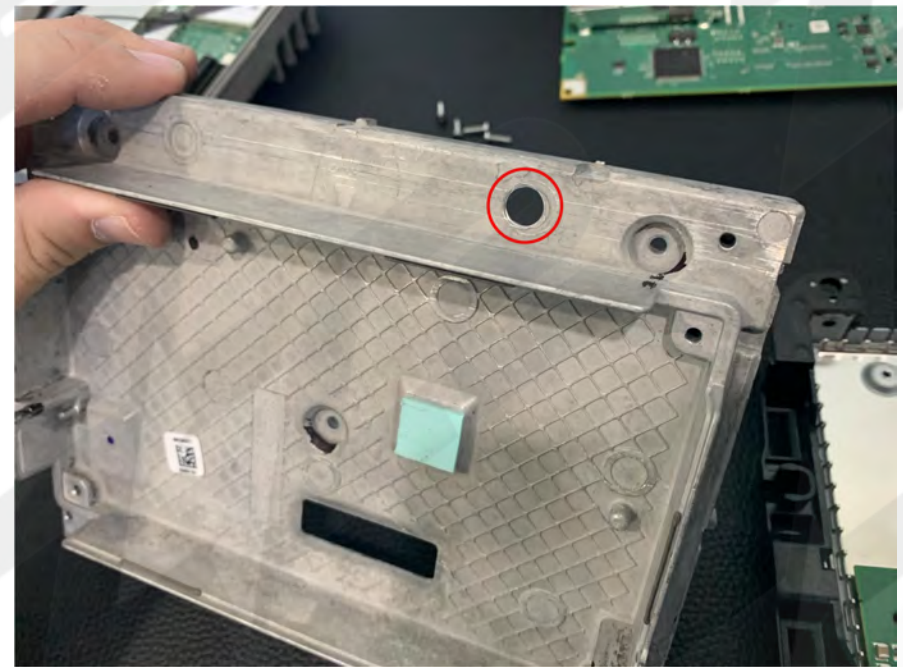
11. Connect (2) OE FFC ribbons to the connectors on the provided PCB as shown. Be certain to insert the ribbons fully and squarely before connecting the lock tabs to secure.







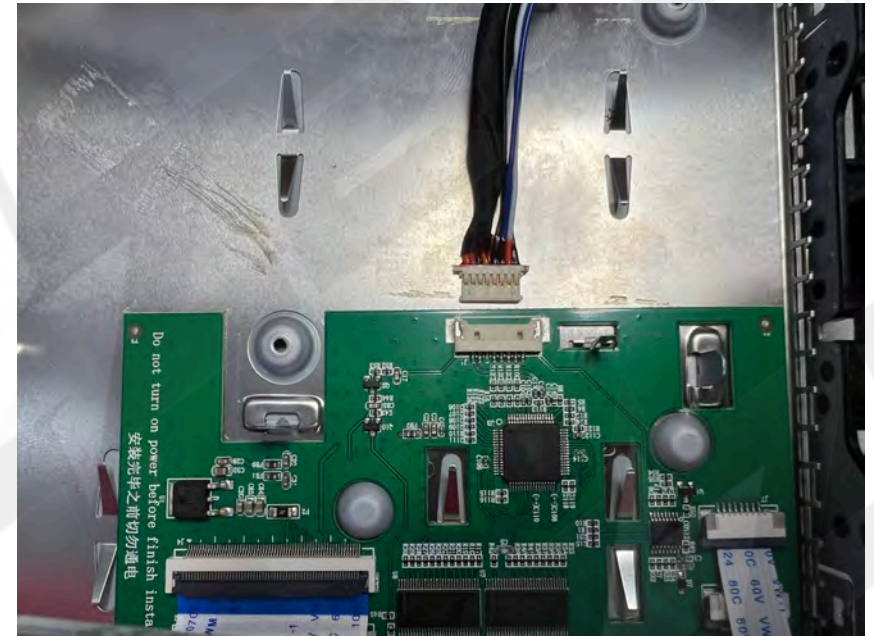
12. The PCB should look like this when connected properly.



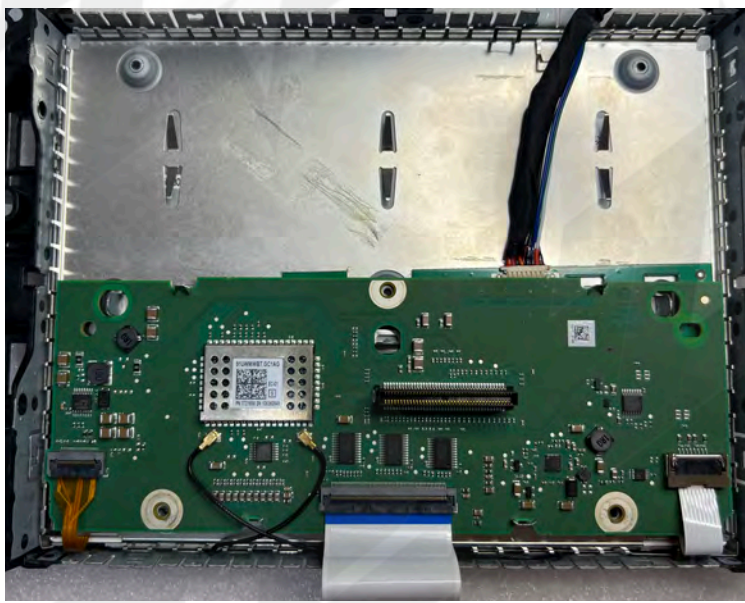
13. Drill a 1/4" hole at the top of the metal chassis (removed from step 7). This will allow the provided LCD-OUT cable to be connected from the interface to the sub-board (next step).



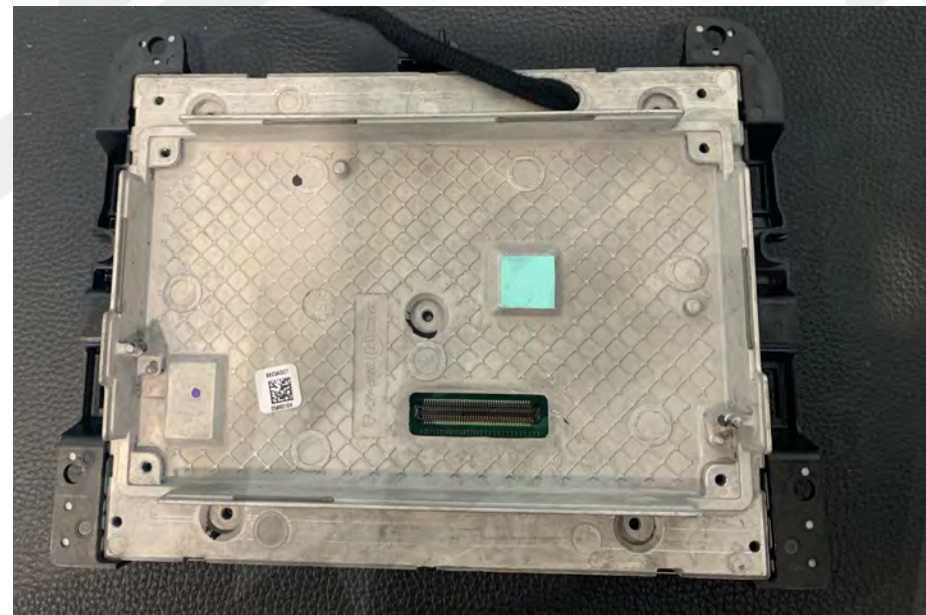
14. Run the provided 'LCD-OUT' cable through the hole in the chassis from step 13 and connect to the PCB  
*NOTE: pins face UPWARDS)*





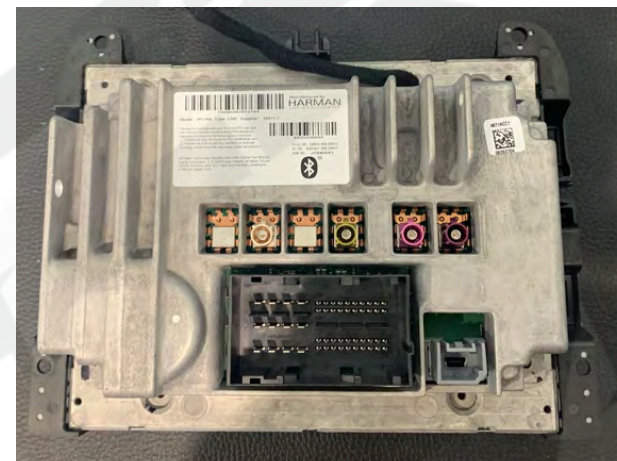
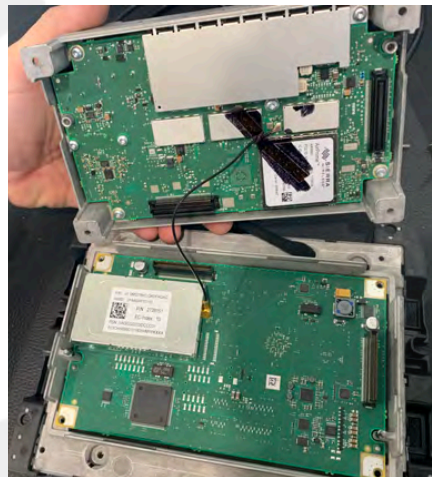


15. Connect the OE PCB back in place *on top of* the provided mod-PCB. note the white FFC ribbons are *provided ribbons* and connect to the OE PCB *in place of* the OE ribbons (the OE ribbons were connected in step 11). Also, connect the OE ribbon (left) and OE antennas.



16. Connect the center metal chassis back to the front of the screen carefully. Replace the (1) center Torx screw. Replace (4) screws on the sides to secure it to the front.

17. Connect the last PCB board back, paying careful attention to the ZIF connector ensuring it connects properly (underneath). Reconnect the antenna (middle picture) carefully before connecting the last (top most) OE PCB (again, ensure all ZIF connectors line up properly). Once this is complete, replace all remaining Torx screws to complete the modification.



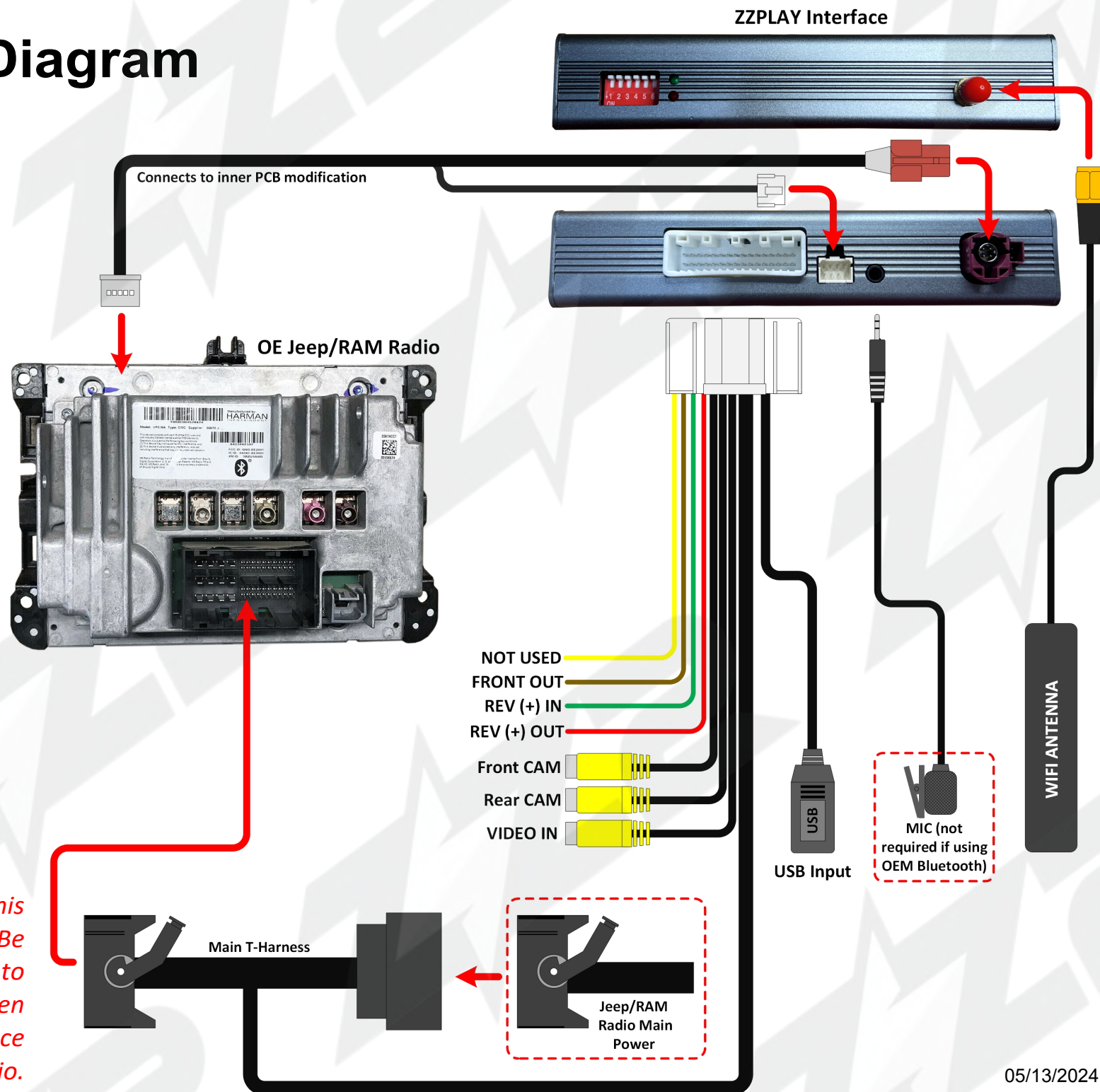


# ITZ-JGC Install Diagram

## NOTES:

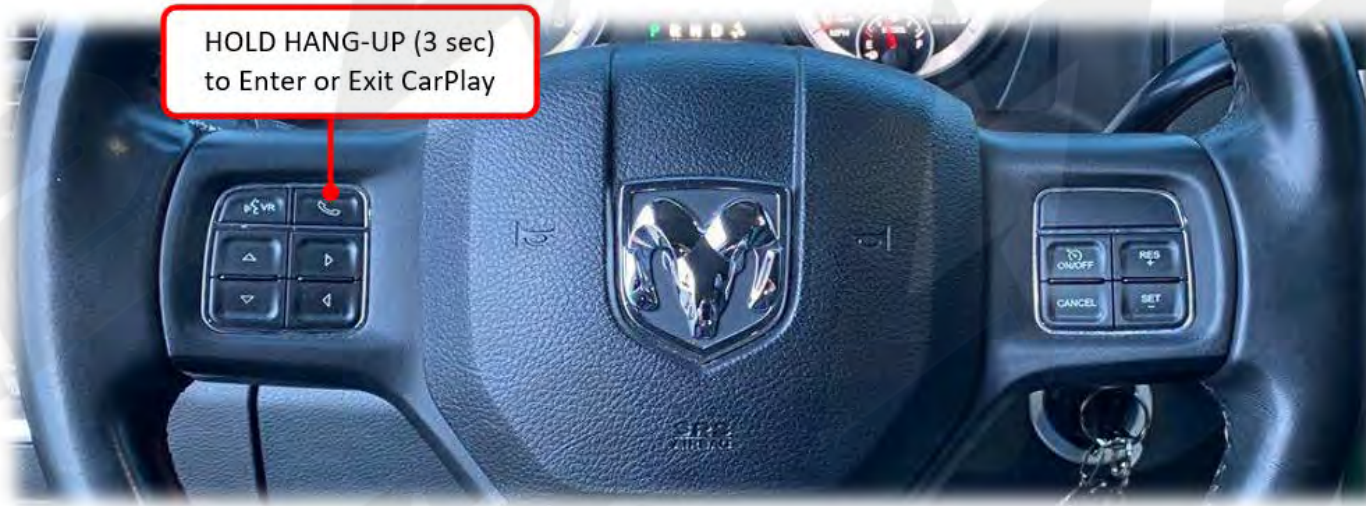
- Use factory bluetooth streaming for audio from CarPlay / Android Auto. This requires that the phone also be connected to the factory radio for streaming.

**T-Harness NOTE:** The pins in this harness are easy to bend. Be careful and double-check to ensure no pins were bent when locking these connectors in place to the OE harness and radio.





# ITZ-JGC Interface control / dip switch reference



Controlling the ZZPLAY interface uses the factory touchscreen. Once a phone connects properly, the screen will flip automatically

1	2	3	4	5	6	Vehicle
OFF	OFF	OFF	OFF	OFF	OFF	8" UConnect

For all vehicles, keep all dips witches OFF.

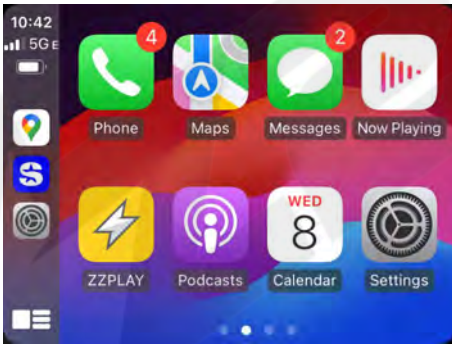


# ZZPLAY Interface Settings Menu

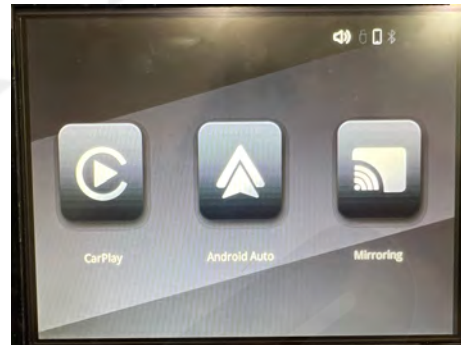


The next few pages overview the ZZPLAY interface, navigating settings and explains entering/exiting all menus. There are (2) menu systems that exist outside of the OE radio system: Carplay (or Android Auto) menu and the ZZPLAY Interface Menu. They operate independent of each other (the ZZPLAY Interface menu will function regardless of whether or not a phone is connected to the module). Settings found inside Carplay will only affect CarPlay functionality. Settings for the ZZPLAY Interface control things like reverse camera settings, audio output control settings and other vehicle/interface-specific parameters.

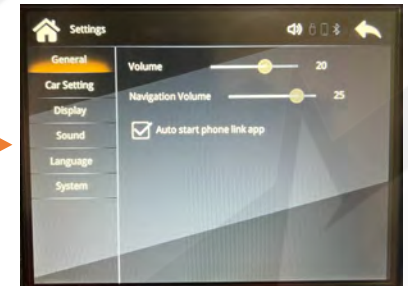
CARPLAY



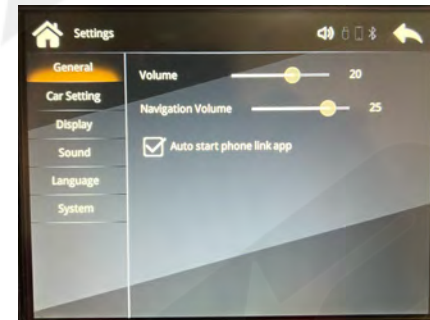
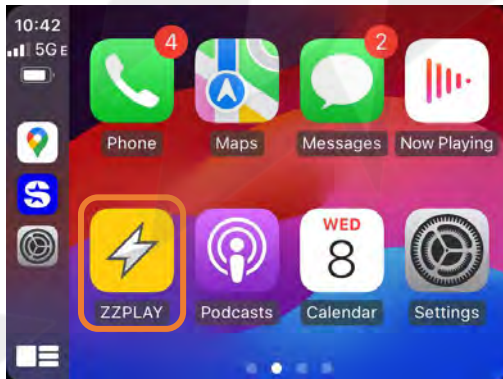
ZZPLAY INTERFACE MENU



Selecting 'Settings' will bring you to the ZZPLAY Interface Setup Menu with all options pertaining to the specific vehicle and install.



To enter the ZZPLAY Interface Menu from the CARPLAY system, locate the **ZZPLAY** tile and select it. If there is no phone connected, simply using the activation button (which normally brings you into CARPLAY mode) will enter you in the ZZPLAY Interface Menu.



## General:

Allows adjustments for global volume control and navigation (specific) volume control output. Also there is an option for auto-pairing the user's handset.

## Car Setting:

Allows adjustments for camera(s) and MIC options. **These options are specific to the how the interface handles camera triggers and types (data vs analog wire, OEM vs aftermarket etc).** A few other vehicle-specific settings can be found here as well.





# ZZPLAY Interface Settings Menu



**Display:**

Allows adjustments for brightness, contrast & saturation



**Sound:**

Allows bass, mid & treble adjustments for audio output.



**System:**

Shows hardware & Software information.

**Factory Mode:** Used for advanced settings

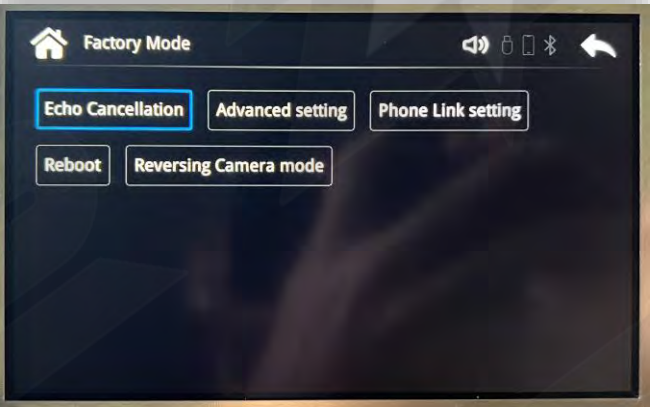
**Echo Cancellation:** Run this to get the best possible performance out of the provided microphone (if equipped) (only for AUX)

**Advanced Setting:** Stores settings that do not need adjustment at this time from end user.

**Phone Link Setting:** Use these settings if you want a specific type of handset (iPhone vs Android) to be wired only / or wireless only. Helpful for when 2 handsets are in the vehicle at the same time.

**Reboot:** press to reboot the ZZPLAY system without turning vehicle off.

**Reversing Camera Mode:** typically does not need adjustment, but adjusts video standard for connected cameras.



**Phone Link Setting**

Keep 'Disable phone link audio' checked ON. This is required to use the factory bluetooth channel for audio.





**Question:** *I can't hear any audio from the CarPlay/Android Auto system.*

**Answer:** It's best to use factory Bluetooth Streaming in order to hear any sound from the ZZPLAY kit. This includes during phone calls. NOTE: The phone must be connected to the factory radio Bluetooth simultaneously with the ZZPLAY module, and you must rest on 'BT Audio'.

**Question:** *I'm hearing reports of a lot of echo or delayed echo on audio during a phone call. Why is this happening and how can I eliminate this?*

**Answer:** This happens when using OEM AUX input for audio instead of OEM Bluetooth. The AUX path travels through the OEM amplifier, where there is active time-alignment & processing on this audio channel.

**Question:** *Sometimes my phone won't connect lately / Sometimes when it connects the screen goes black / Sometimes CarPlay kicks me out back to the interface menu.*

**Answer:** For iPhone users, you must perform a 'Hard Reset' on the phone in use on average twice a month to clear certain cache and reset the processors (this will not wipe any data). Google search 'Hard Reset iPhone 13' (or whatever version iPhone version you have) and perform that task. After this is done, you will see a difference in speed and reliability (of pairing/connecting).

**Question:** *Incoming text responses from SIRI are silent on CarPlay. It mutes the audio but I don't hear the read-out.*

**Answer:** This often happens for 2 reasons: The iPhone needs a hard-reset (see previous question), or the phone is connected to the vehicle's OE Bluetooth for both **phone calls & audio (and the text read-outs are being sent to the vehicle BT source - you're on AUX source)**. You want to be connected to the vehicle for **phone calls ONLY** - for iPhone the only way to make this distinction is to adjust the phone setup on the OE radio side. Find your phone (name) in the Bluetooth or Phone setup in the OEM radio settings and disconnect as an audio player. NOTE: *not all vehicles have this option, but it seems to happen mostly with cars that do have this option (Lexus, etc).*

**Question:** *Using Android, I cannot get the phone to reliably connect wirelessly (or at all).*

**Answer:** Android phones are more finicky and iPhones with their wireless connectivity. Make sure the OS is fully up-to-date. Clear the cache on the Android Auto application. The Android OS must be at least version 11. Some phones (TCL, Motorola) seem to have protocols that don't play nice with every system. If you run into this, use a good USB-C cable for the Android Auto Connection instead.





[support@zz-2.com](mailto:support@zz-2.com)

929-220-1212

Toll free: 877-241-2526

Extension 2: Tech Support

Agreement: End user agrees to use this product in compliance with all State and Federal laws. ZZDOIS LLC dba ZZ-2 is not to be held liable for misuse of its product. If you do not agree, please discontinue use immediately and return product to retailer. This product is intended for off-road use and passenger entertainment only.