

Labnet Mini LabRoller™ Rotator

Instruction Manual

Catalog Numbers:

H5500

H5500-230V-EU

H5500-230V-UK



Table of Contents

1.0 Introduction	1
2.0 Symbols and Conventions.....	1
3.0 Safety Information	1
4.0 Technical Specifications.....	1
5.0 Package Contents	2
6.0 Installation.....	2
6.1 Unpacking.....	2
6.2 Installation.....	2
7.0 Loading the Rotisserie	2
8.0 Cleaning and Maintenance	3
8.1 Cleaning	3
9.0 Troubleshooting Guide	3
10.0 Accessories.....	3
11.0 Limited Warranty.....	4
12.0 Equipment Disposal	4

1.0 Introduction

The Labnet Mini LabRoller™ Rotator is an end over end tube rotator, designed for mixing samples in both a horizontal and vertical plane.

2.0 Symbols and Conventions



The electrical warning indicates the presence of a potential hazard which could result in electrical shock.



CAUTION: This symbol refers you to important operating and maintenance (servicing) instructions within this Instruction Manual. Failure to heed this information may present a risk of damage or injury to persons or equipment.



This symbol identifies a Protective Earth (PE) terminal, which is provided for connection of the supply system's protective earth (green or green/yellow) conductor.

3.0 Safety Information

NOTE: Misuse or unauthorized modifications may void the warranty. If this equipment is used in a manner not specified by the manufacturer, the protection provided by the equipment may be impaired.



WARNINGS:

- Do not use the rotator near water sources. Be sure that water does not get on the device, especially during cleaning procedures.
- Do not expose the rotator to aggressive solvents.
- Hazardous samples should be mixed only in appropriate containment vessels.
- Do not mix flammable or explosive samples.

4.0 Technical Specifications

Motion	Rotating
Accessories Included	Rotisserie for 36 x 1.5/2.0 mL microcentrifuge tubes (Cat. No. H5500-02)
Speed	
H5500	24 rpm
H5500-230V	20 rpm
Dimensions (W x D x H)	8.4 x 4 x 5 in. (21.3 x 10.2 x 12.6 cm)
Weight	1.8 lbs. (0.8 kg)
Electrical	
H5500	120V~, 60 Hz, 0.03A, 3.6W
H5500-230V	230V~, 50/60 Hz, 0.017A, 4W
Temperature Range	5°C to 40°C (up to 80% RH at 31°C, decreasing linearly to 50% RH at 40°C)
Protection Class	IP21

The Labnet Mini LabRoller Rotator is designed to be safe at least when operated under the following conditions:

- Indoor use only
- Altitude up to 2,000 meters
- Pollution degree 2

Changes or modifications not expressly approved by the party responsible for compliance could void the user's authority to operate the equipment.

NOTE: This equipment has been tested and found to comply with the limits for a Class A digital device, pursuant to Part 15 of the FCC Rules. These limits are designed to provide reasonable protection against harmful interference when the equipment is operated in a commercial environment. The equipment generates, uses, and can radiate radio frequency energy and, if not installed and used in accordance with the user manual, may cause harmful interference to radio communications. Operation of equipment in a residential area is likely to cause harmful interference in which case the user will be required to correct the interference.



CAUTION: This equipment is not intended for use in residential environments and may not provide adequate protection to radio reception in such environments.

This ISM device complies with Canadian ICES-001.

Cet appareil ISM est conforme à la norme NMB-001 du Canada.

5.0 Package Contents

- ▶ Labnet Mini LabRoller™ Rotator
- ▶ Rotisserie for 36 x 1.5/2.0 mL microcentrifuge tubes (Cat. No. H5500-02)
- ▶ Power supply
- ▶ Instruction manual

6.0 Installation

6.1 Unpacking

Before starting the installation, carefully examine the rotator.

- ▶ Open the box and carefully remove the padding. Check to see that the rotator has not been damaged during transportation. Keep the packing material until you are sure the rotator works properly.
- ▶ Make sure that all of the accessories are included.
- ▶ Carefully lift the unit from the box.
- ▶ Be sure the following information is included on the label located on the bottom of the unit: Serial number, product number, electrical rating.
- ▶ Check that the power cord has the correct configuration that matches the outlet according to your local standards.

NOTE: If any damage occurred during transportation, contact your carrier immediately.

6.2 Installation

Place the rotator on a stable, flat surface. Connect the plug into the grounded wall socket. Avoid sockets where powerful electric motors, refrigerators, and similar devices are also connected.

Use the On/Off switch to control the rotator.



- ▶ Be careful when you plug the cord into the grounded wall socket.
- ▶ Do not touch the plug with wet hands.
- ▶ Do not pull the plug by the cord.

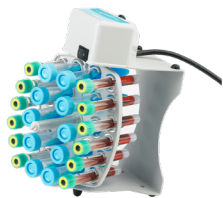
7.0 Loading the Rotisserie

The rotisserie supplied with the unit is designed to hold standard 1.5 or 2.0 mL microcentrifuge tubes.

There are two other rotisseries available separately for different size tubes. Each rotisserie consists of a rotisserie plate with bar keys for placement into the apparatus and a two piece rotisserie rod with bar key on either end.

Install the rotisserie rod by screwing the two elements together through the hole in the center of the rotisserie plate. Insert the tubes into the tube holders. Mount the rotisserie in the apparatus in either the vertical position using the rotisserie rod, or the horizontal position using the bar keys on the plate. The side opposite to the driving mechanism is flexible to allow inserting the rotisserie without tools. Insert the bar key on the rotisserie rod or plate into the drive mechanism. The other end of the rotisserie is suspended in the bushing located in the opposite side of the unit. Be sure to distribute tubes evenly across the rotisserie carrier to achieve smooth rotating motion.

Tumbling



To create a tumbling motion, load the tubes and mount the rotisserie so the tubes are held in a vertical position.

Then, rest the unit on its end making sure that it is supported by the black rubber side legs. The unit can be rested on either end. Setting the unit on the end with the power switch will create more vigorous tumbling motion than when it is rested on the opposite end.

Mixing Plates



Any of the rotisseries can be used for mixing in microplates. Remove the rotisserie rod if it is installed.

Seal the microplates completely to avoid leakage. Make sure the microplate lines up with the locking dimples. Fasten the plate (or plates) with rubber bands or small bungee cords (not supplied with the unit). Maximum of two deep well plates can be mixed at a time. For all other types of motion, two plates should be placed on the rotisserie for proper balance.

8.0 Cleaning and Maintenance

No routine maintenance or lubrication is required. Keeping the rotator clean will the help to maintain it in proper operating condition.

8.1 Cleaning

The outside housing can be cleaned with a soft, damp cloth when needed.

NOTE: Before cleaning the rotator, always unplug the power cord. Do not use any aggressive or abrasive cleaners (acetone, nitro, polish, etc.). This may permanently damage the rotator finish.

9.0 Troubleshooting Guide

Be sure to disconnect the rotator from the main power source immediately in case of any signs of malfunction.

Problem	Solution
Rotator does not start	<ul style="list-style-type: none">▶ Check the power connection.▶ Check if the rotisserie is properly inserted into the drive mechanism.▶ Call for service.

Should you have a question about the operation of the Labnet Mini LabRoller™ Rotator or if service is required, contact Corning Customer Service. Do not send in a unit for service without first calling to obtain a repair authorization number. Should the unit require return for service, it should be properly packed to avoid damage. Any damage resulting from improper packaging shall be the responsibility of the user.

10.0 Accessories

Cat. No.	Description
H5500-02	Rotisserie for 36 x 1.5/2.0 mL microcentrifuge tubes
H5500-15	Rotisserie for 10 x 15 mL tubes or 12 x 5/7 mL tubes
H5500-50	Rotisserie for 6 x 50 mL tubes

11.0 Limited Warranty

Corning Incorporated (Corning) warrants that this product will be free from defects in material and workmanship for a period of one (1) year from date of purchase. CORNING DISCLAIMS ALL OTHER WARRANTIES WHETHER EXPRESSED OR IMPLIED, INCLUDING ANY IMPLIED WARRANTIES OF MERCHANTABILITY OR OF FITNESS FOR A PARTICULAR PURPOSE. Corning's sole obligation shall be to repair or replace, at its option, any product or part thereof that proves defective in material or workmanship within the warranty period, provided the purchaser notifies Corning of any such defect. Corning is not liable for any incidental or consequential damages, commercial loss or any other damages from the use of this product.

This warranty is valid only if the product is used for its intended purpose and within the guidelines specified in the supplied instruction manual. This warranty does not cover damage caused by accident, neglect, misuse, improper service, natural forces or other causes not arising from defects in original material or workmanship. This warranty does not cover motor brushes, fuses, light bulbs, batteries or damage to paint or finish. Claims for transit damage should be filed with the transportation carrier.

In the event this product fails within the specified period of time because of a defect in material or workmanship, contact Corning Customer Service at: USA/Canada 1.800.492.1110, outside the U.S. +1.978.442.2200, visit www.corning.com/lifesciences, or contact your local support office.

Corning's Customer Service team will help arrange local service where available or coordinate a return authorization number and shipping instructions. Products received without proper authorization will be returned. All items returned for service should be sent postage prepaid in the original packaging or other suitable carton, padded to avoid damage. Corning will not be responsible for damage incurred by improper packaging. Corning may elect for onsite service for larger equipment.

Some states do not allow limitation on the length of implied warranties or the exclusion or limitation of incidental or consequential damages. This warranty gives you specific legal rights. You may have other rights which vary from state to state.

No individual may accept for, or on behalf of Corning, any other obligation of liability, or extend the period of this warranty.

For your reference, make a note of the serial and model number, date of purchase, and supplier here.

Serial No. _____ Date Purchased _____
Model No. _____ Supplier _____

12.0 Equipment Disposal



According to Directive 2012/19/EU of the European Parliament and of the Council of 4 July 2012 on waste electrical and electronic equipment (WEEE), this product is marked with the crossed-out wheeled bin and must not be disposed of with domestic waste.

Consequently, the buyer shall follow the instructions for reuse and recycling of waste electronic and electrical equipment (WEEE) provided with the products and available at www.corning.com/weee.

To request certificates, please contact us at www.labnetlink.com.

Warranty/Disclaimer: Unless otherwise specified, all products are for research use or general laboratory use only.* Not intended for use in diagnostic or therapeutic procedures. Not for use in humans. These products are not intended to mitigate the presence of microorganisms on surfaces or in the environment, where such organisms can be deleterious to humans or the environment. Corning Life Sciences makes no claims regarding the performance of these products for clinical or diagnostic applications. *For a listing of US medical devices, regulatory classifications or specific information on claims, visit www.corning.com/resources.

Corning's products are not specifically designed and tested for diagnostic testing. Many Corning products, though not specific for diagnostic testing, can be used in the workflow and preparation of the test at the customers discretion. Customers may use these products to support their claims. We cannot make any claims or statements that our products are approved for diagnostic testing either directly or indirectly. The customer is responsible for any testing, validation, and/or regulatory submissions that may be required to support the safety and efficacy of their intended application.

CORNING

Corning Incorporated
Life Sciences

www.corning.com/lifesciences

NORTH AMERICA

t 800.492.1110
t 978.442.2200

ASIA/PACIFIC

Australia/New Zealand
t 61 427286832
Chinese Mainland
t 86 21 3338 4338

India

t 91 124 4604000

Japan

t 81 3-3586 1996

Korea

t 82 2-796-9500

Singapore

t 65 6572-9740

Taiwan

t 886 2-2716-0338

EUROPE

CEurope@corning.com

LATIN AMERICA

grupoLA@corning.com

Brazil

t 55 (11) 3089-7400

Mexico

t (52-81) 8158-8400