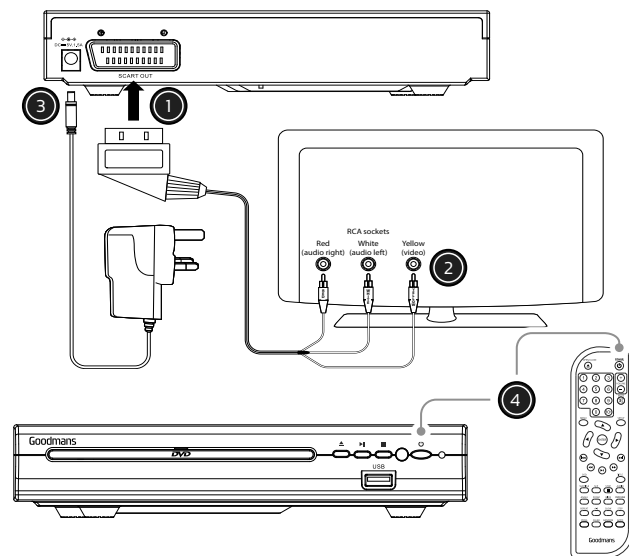


GETTING STARTED

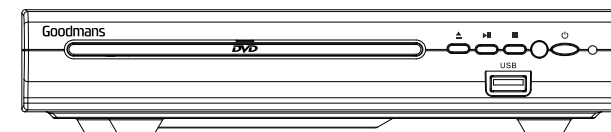


i Note: Do not connect the mains power until ALL connections have been made

- 1 Plug the SCART lead into the SCART socket on the back of the DVD player.
- 2 Plug the AV plugs on the other end of the SCART lead into the AV sockets on your television as shown.
- 3 Connect the mains power lead into the DC 5V socket on the back of the DVD player. Plug the power adapter into the mains power wall socket and switch on.
- 4 Press the STANDBY button on the DVD player or remote control to turn the player on.

COMPACT DVD PLAYER
MODEL: 355881

COMPACT DVD PLAYER

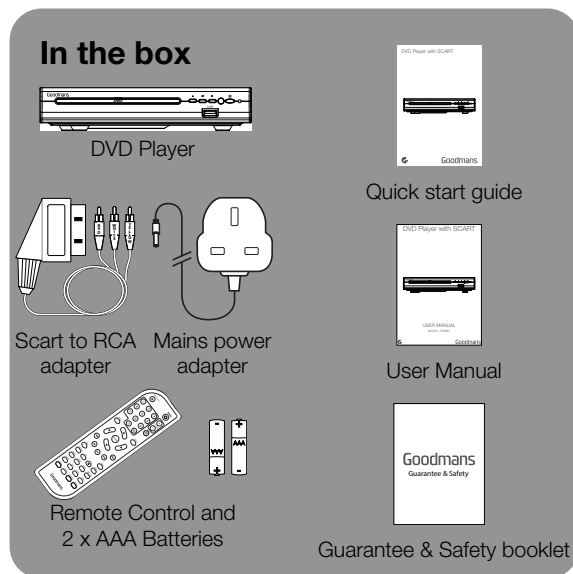


Goodmans

THANK YOU

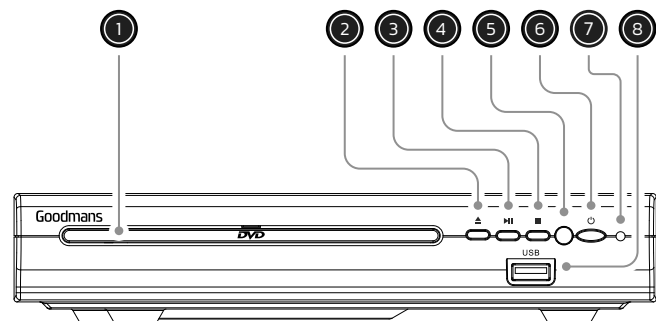
Thank you for choosing a Goodmans product. We've been making electrical products for the British people for over 90 years. Each of our projects has been carefully designed to be great at what it does and this one is no exception. We hope you enjoy your new DVD Player.

Please read the Guarantee & Safety booklet before starting.



DID YOU KNOW?

This DVD player has been designed to go into standby mode automatically after approximately 20 minutes of inactivity. Just press the **STANDBY** button to turn the DVD player back on again



- 1 DVD disc drawer**
Press the **OPEN/CLOSE** button to OPEN/CLOSE the drawer for disc playback or removal.
- 2 OPEN/CLOSE button**
Press to OPEN/CLOSE the disc drawer.
- 3 PLAY/PAUSE button**
Press to PLAY/PAUSE the DVD playback.
- 4 STOP button**
Press to STOP DVD playback.
- 5 Remote control sensor**
- 6 STANDBY button**
Press to power on or enter STANDBY mode.
- 7 Power on/Standby LED**
Green LED in Power on mode and Red LED in Standby mode
- 8 USB Port**
Connect a USB memory (MAX 32GB) stick to display images & playback supported videos

Install the remote control batteries

1. Press down the tab on the remote control battery door, in the direction of the arrow, to remove it.
2. Insert the 2 x AAA batteries supplied, taking care to note the + and - markings and position the batteries the correct way around.
3. Replace the battery cover, making sure that it 'clicks' shut.

