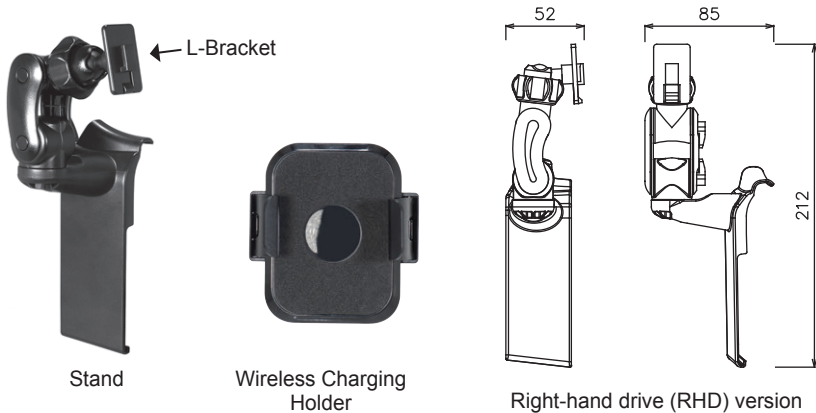


Thank you for purchasing the Beat-Sonic BSA50 mobile device holder. Designed and made in Japan, this product represents our commitment to quality and excellence. Please read this manual carefully prior to installing this product to ensure correct operation.

■ Features

- Designed specifically for Toyota GR86 (ZN8) & Subaru BRZ (ZD8)
- Secure mounting position does not obstruct visibility or block air vents
- Wireless charging holder automatically charges Qi-enabled Smartphones
- "L-Bracket" provides option to attach a variety of Beat-Sonic mobile device holders



⚠ Precautions

- **Adjust Carefully:** Ensure the mobile device does not interfere with the gear shift lever operation.
- **Check Regularly:** Extreme temperature changes and road vibrations may loosen the stand joints. Periodically check and tighten if necessary.
- **Obey Traffic Laws:** Follow local driving regulations, including those related to cell phone use while operating a vehicle.
- **Disclaimer:** Beat-Sonic and its affiliates are not responsible for any consequences resulting from the installation and/or use of this product.

■ Specifications

Stand Dimensions:

- 85mm(W) x 212mm(H) x 52mm(D)
- Material: ABS Plastic

Holder Dimensions:

- 122mm(W) x 90mm(H) x 45mm(D)
- Material: ABS Plastic

■ Contents

- RHD GR86 / BRZ Stand x 1
- Wireless Charging Phone Holder x 1
- USB-C to USB-A cable (1m) x 1
- Paper Template x 1
- Instruction Manual x 1
- Plastic Tweezers x 1
- Protective Film x 2
- L-Bracket Stickers x 2

1 Apply Anti-Scratch Protective Film

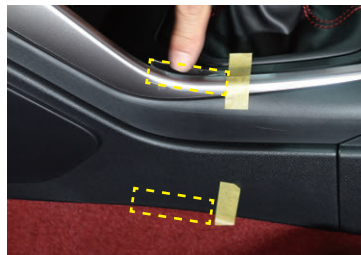
1.1 Parallel to the edge of the passenger side gear shift surround trim, measure 14cm (5.5 in.) from the panel seam where the shift surround panel meets the center console box. Mark the location with masking tape.



1.2 On the lower section of the passenger side center console side panel, measure 9.5cm (3.74 in.) from the seam where the center console side panel joins the center console box. Apply another piece of masking tape to mark the location.



1.3 Apply the clear protective film strips to the plastic trim forward of the masking tape position markers, as shown in the illustration on the right, then remove the masking tape markers.

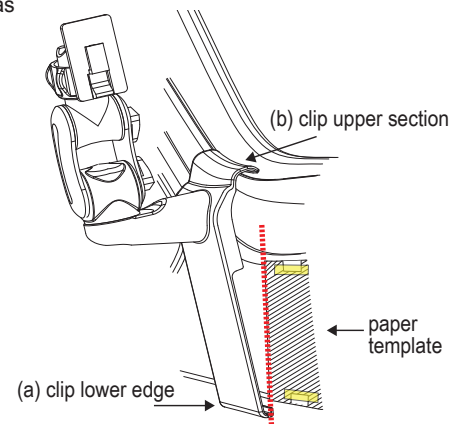
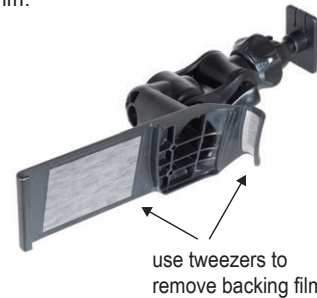


2 Attach the Paper Template

2.1 Cut out the supplied paper template. Align the back edge of the template with the seam where the center console side panel joins the center console box. Use masking tape to temporarily hold in place.



2.2 Remove the double-sided tape backing film from the stand. Using the template as a guide, (a) clip the lower edge of the stand under the center console side panel then (b) clip the upper section of the stand over the gear shift surround trim.



2.3 Apply medium pressure to the side of the stand for at least 20 seconds to ensure strong adhesion of the double-sided tape. In cold weather, use a hair dryer to warm the mating surfaces.

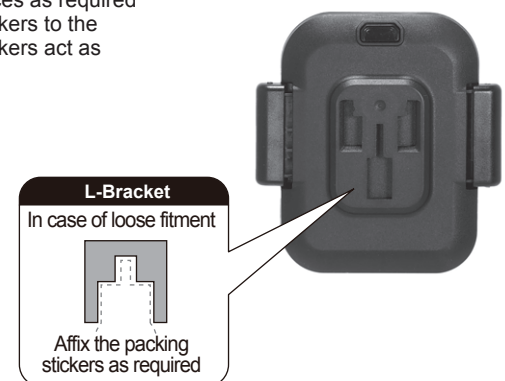


3 Attach the Holder

3.1 Complete the installation by attaching the mobile device holder to the stand.

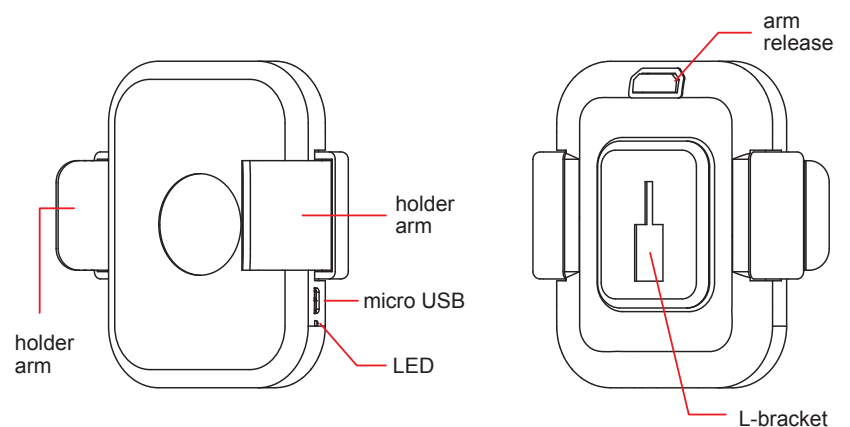


3.2 If the holder does not fit tightly to the L-Bracket, apply 1 or 2 pieces as required of the supplied packing stickers to the back of the holder. The stickers act as shims to remove any play.



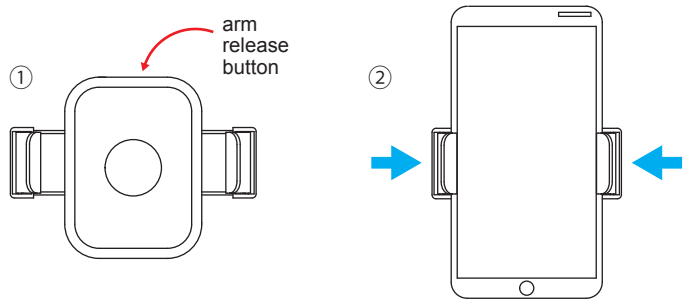
4 Using the Holder

4.1 Wireless Charging Holder Components



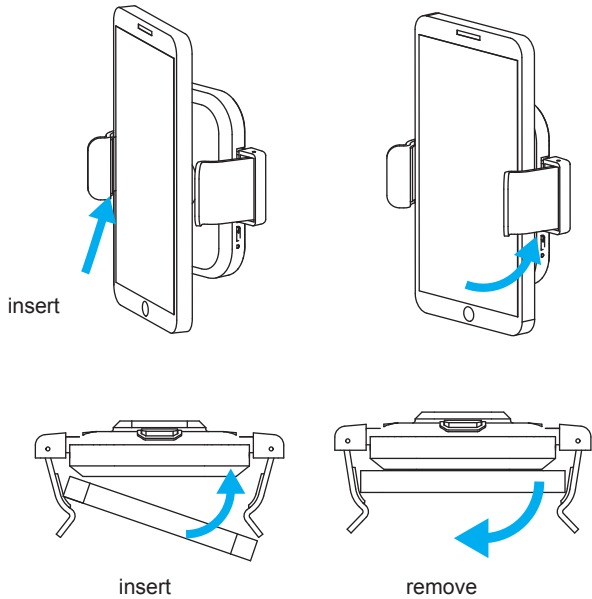
4.2 Initial set-up

- ① Press the arm release button to extend the arms.
- ② Mount the phone and close the arms with just enough pressure to firmly hold the phone. Squeezing arms together too tightly will make the phone difficult to remove and insert.



Compatible with phone minimum width 60mm to maximum width 105mm and maximum phone thickness of 13mm.

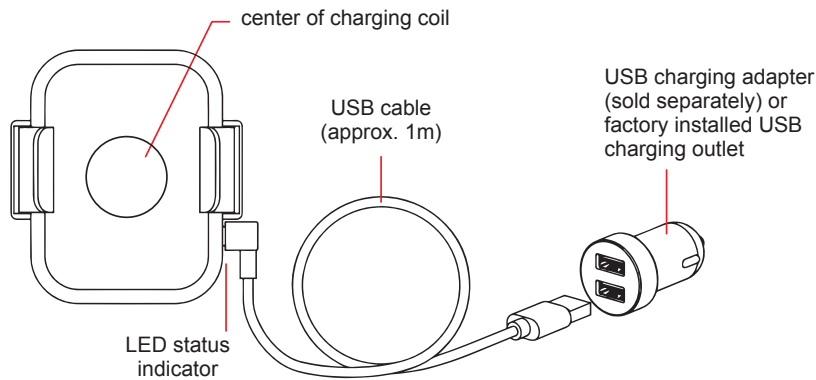
- 4.3 After initial set-up, the phone can be inserted by sliding into one side of the holder arms then clipping the phone into place. Remove by pulling one side of the phone to release the holder arm.



5 Wireless Charging

5.1 LED Status Indicator

- LED blinks red 3 times : USB power detected and the wireless charger has turned on.
- LED is red : Wireless charger is in standby mode.
- LED is green and blinking slowly : Wireless charger is charging the device.
- LED is red and blinking : Charging error. Remove the device and check for obstructions.
- LED is green and blinking : Mobile device is not compatible with this charger.



For best charging performance, place the center of the phone over the center of the charging coil

5.2 How to Get Best Charging Performance

This product uses the Qi wireless charging standard defined by the Wireless Power Consortium.

- Use the supplied USB cable for best performance. Using a different cable can result in longer charging times and reduced charging performance.
- High speed charging requires QC2.0 or QC3.0 USB charging outlet.
- Place the center of the phone on the center of the charging coil for best charging performance.
- High ambient temperature can affect charging speed and may cause charger to temporarily stop charging.
- Phone cases with metallic inserts will prevent wireless charging.
- Do not place credit cards, magnetic stripe cards, key cards, etc. near the charging coil.

 株式会社 ビートソニック	International 472-5 Koushin, Fujieda, Nisshin, Aichi, 470-0112, JAPAN TEL: +81-561-75-1655 FAX: +81-561-74-5595 www.beatsonicglobal.com email: inquiries@beatsonicglobal.com
 Beat-Sonic USA Inc.	USA and Canada 14778 Beach Blvd. La Mirada, CA 90638 TEL: 1-714-994-1085 FAX: 1-714-249-4741 www.beatsonicusa.com email: info@beatsonicusa.com

The rights to the trademarks, logos, trade names etc. herein belong to the respective owners. Refer to the Beat-Sonic website for details.