

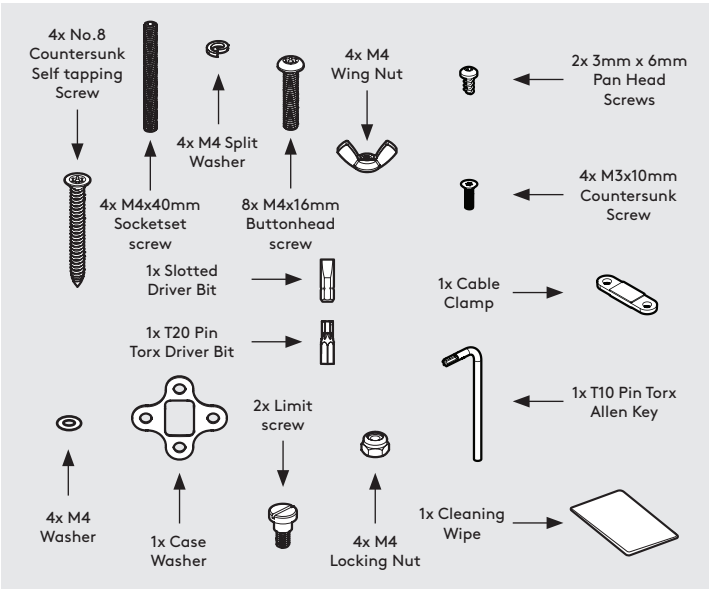
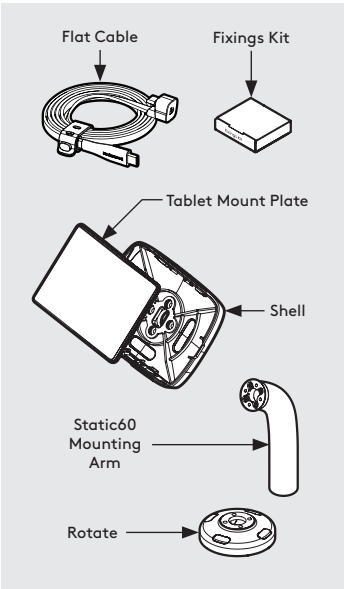
Core Swivel 60  
Assembly Instructions

Tools Required:

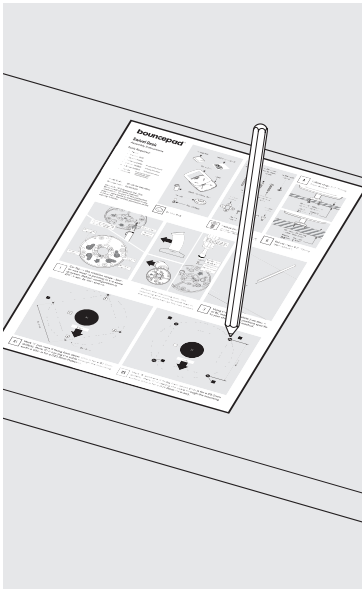
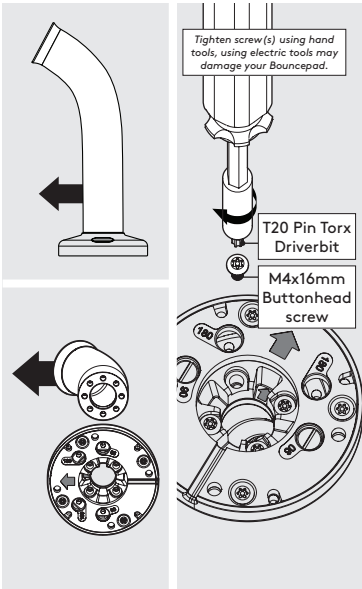
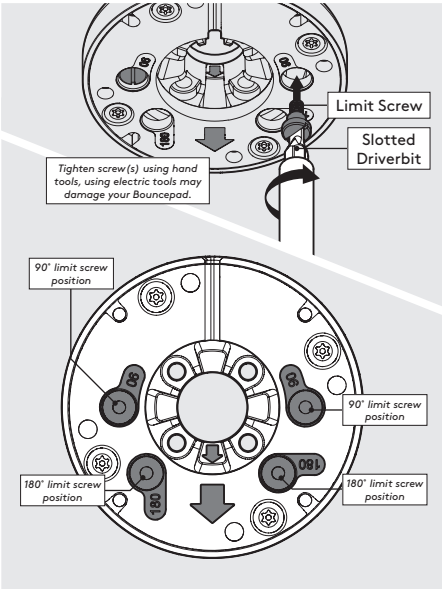
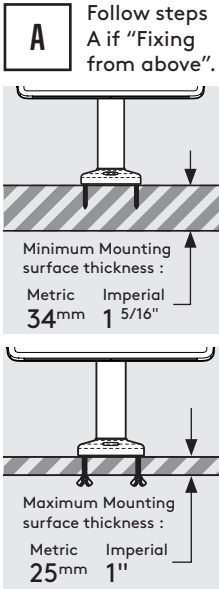
- Pencil
- Electric Drill
- 7mm Spanner *\*or adjustable spanner*
- 5.0mm Drillbit *\*if fixing from below*
- 2.5mm Drillbit *\*if fixing from above*
- 16mm Holesaw *\*if routing the tablet cable through your mounting surface*
- Socket Driver

Sheet Code: BP-IM-090\_REV0  
Release Date: 15/08/2024

Copyright 2024 Spotspot Ltd. (T/A Bouncepad) all rights reserved. Confidential, no part of this publication may be reproduced or transmitted in any form without the written permission of the copyright holder.



\* Due to the modular nature of our product range you may receive additional fixings in the fixings kit

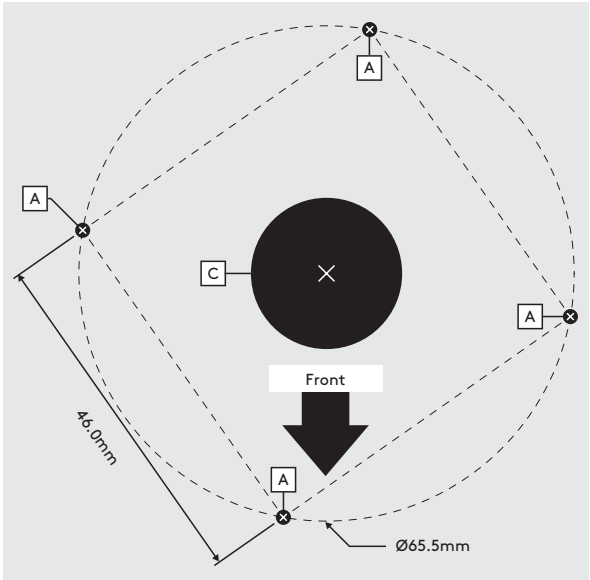


**B** Follow steps B if "Fixing from below".

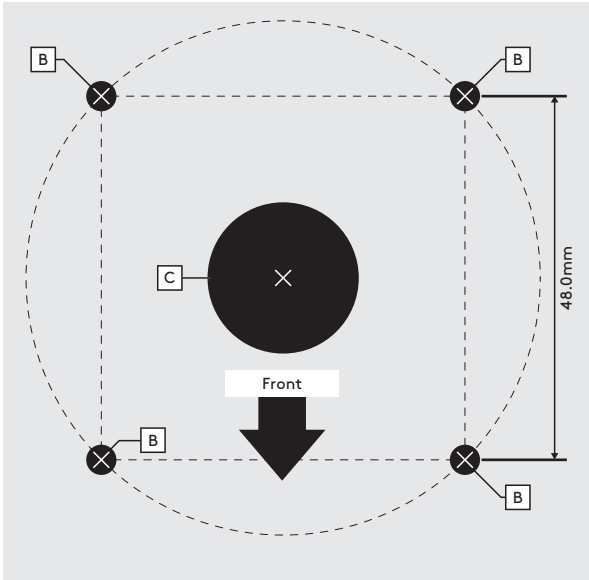
**1** Configure the rotation range - both arrows must point in the same direction. Default configuration is 270°. Insert 2x limit screws.

**2** Attach the Static60 Arm. The Static60 Arm must lean forward in the same direction as the two arrows.

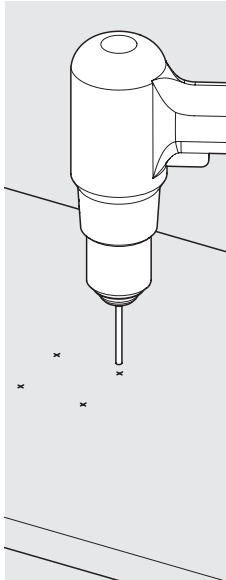
**3** Using the hole template (see step A or B), mark the hole positions specific to your chosen fixing method.



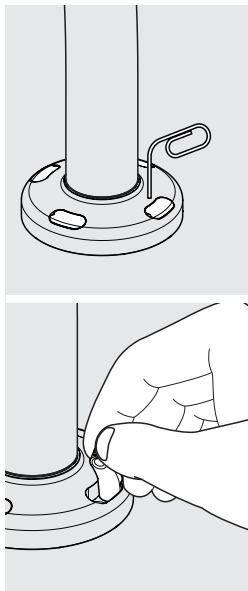
**A1** Mark 'A' positions for "Fixing from above" (Ø2.5mm drillbit). Mark 'C' for the cable hole. (Ø20.0mm Holesaw).



**B1** Mark 'B' positions for "Fixing from below" (Ø5.0mm drillbit). Mark 'C' for routing the cable hole. (Ø20.0mm Holesaw).

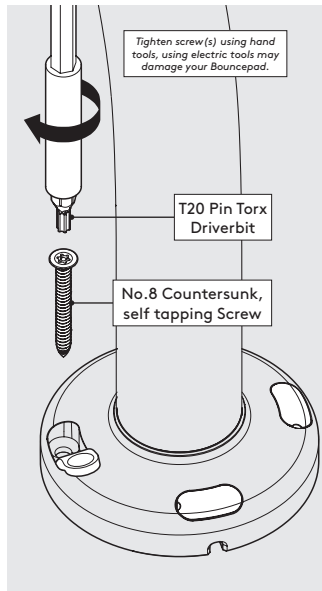


**4** Drill the required holes.



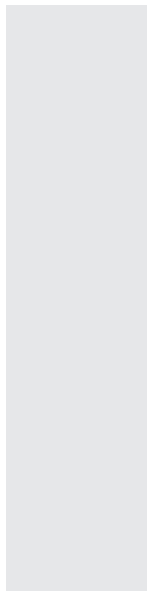
**A2**

Lift & hold the rubber screw covers.



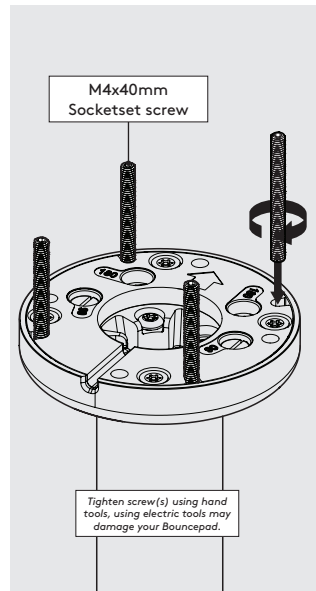
**A3**

Secure the Rotate to the mounting surface, then close the covers.



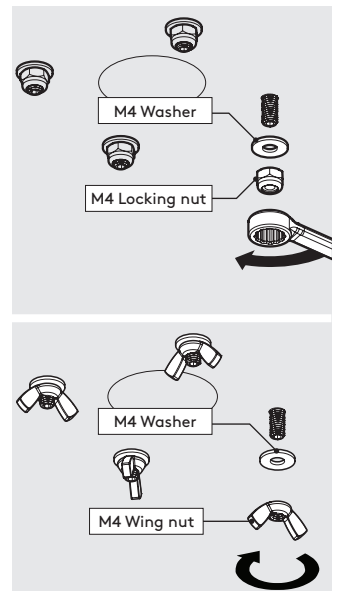
**A4**

Go to step 5



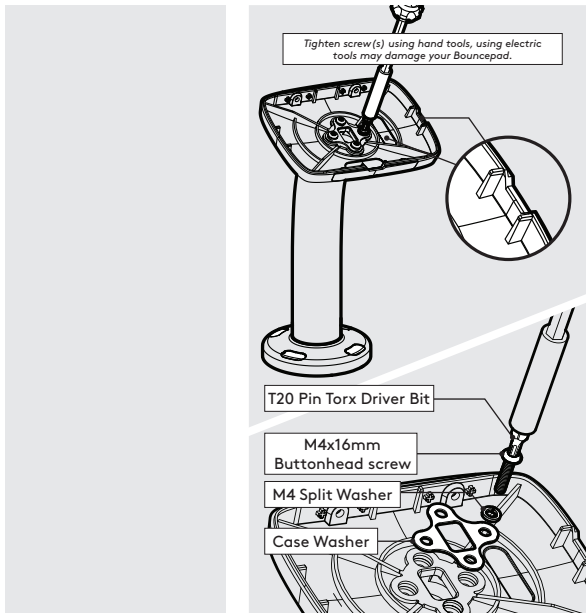
**B2**

Screw in the 4x Socket Set Screws. Ensure full thread engagement.



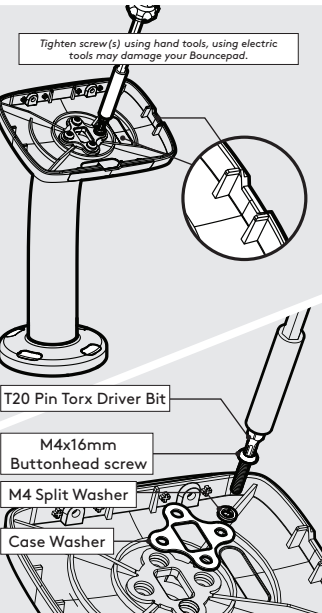
**B3**

Secure to the surface. Locking nuts offer greater security.



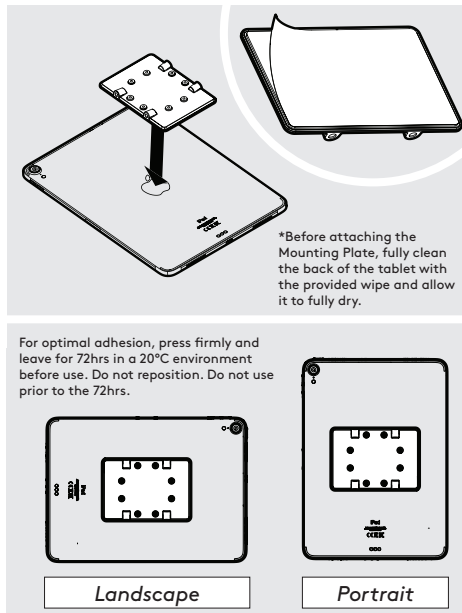
**B4**

Go to step 5.



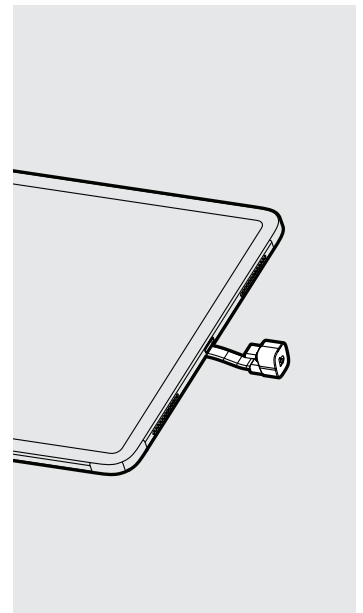
**5**

Locate & attach the Shell to the Static60 in the correct orientation.



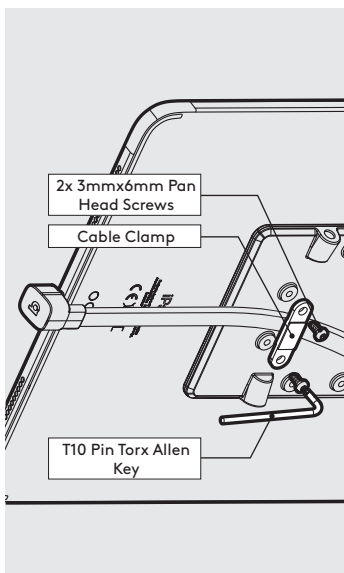
**6**

Remove the Mounting Plate adhesive backing. Attach level & centrally to the Tablet back as shown.



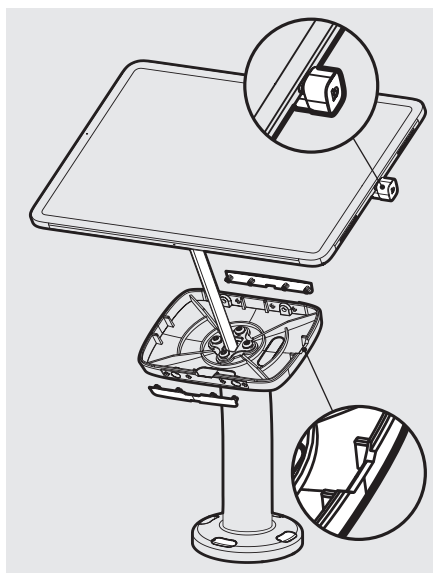
**7**

Attach the Flat Cable to the Tablet with the U-Bend Head.



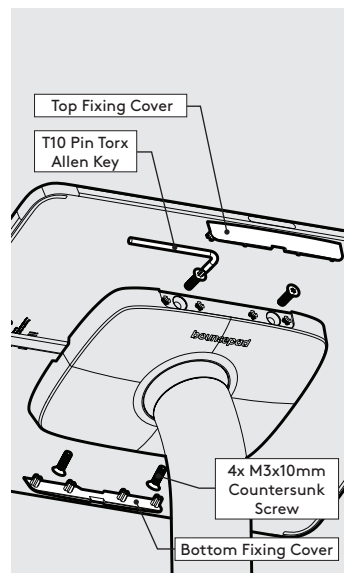
**8**

Secure the Flat Cable to the Mounting Plate with the Cable Clamp as shown.



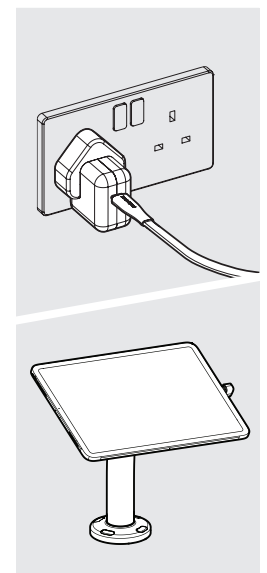
**9**

Remove the Fixing Covers. Feed the Flat Cable into the assembly & locate the Tablet in the chosen orientation.



**10**

Secure the Tablet to the Shell & attach the Fixing Covers as shown.



**11**

Connect tablet to power & installation is now complete.