



1080p Indoor Wi-Fi Camera

Installation Guide

ADC-V515



Pre-installation checklist

- ADC-V515 camera (included)
- AC power adapter (included)
- 2.4 GHz Wi-Fi connection to broadband internet (Cable, DSL, or Fiber Optic)
- An Alarm.com account with a service package that supports video
- A computer, tablet, or smartphone with Wi-Fi is required if the router does not have the Wi-Fi Protected Setup (WPS) feature

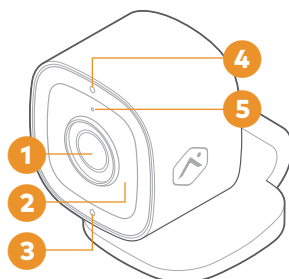
There are two options for connecting the ADC-V515 to the Internet: Access Point (AP) mode and Wi-Fi Protected Setup (WPS) mode. Use WPS mode if you have easy access to the customer's router and the router has the WPS feature enabled. Note that some Internet Service Providers disable the WPS feature on customer routers. AP mode is the most reliable wireless method for installing this device.

In the box

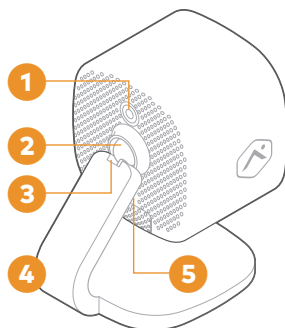
- ADC-V515 camera
- Mounting bracket
- Power adapter
- Installation guide
- Wall anchors & screws (x2) (use 3/16" or 5 mm drill bit)

Overview

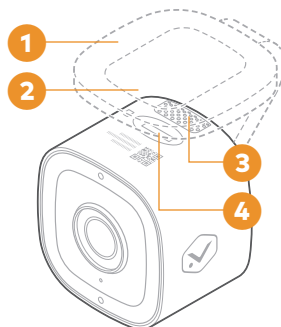
- 1 Camera lens
- 2 Infrared light
- 3 Status light
- 4 Ambient light sensor
- 5 Microphone



- 1 DC power connector
- 2 Friction ball joint
- 3 Friction hinge joint
- 4 Base
- 5 Reset / WPS button



- 1 Rubber pad
- 2 Mounting recess
- 3 Speaker
- 4 Micro SD card slot



Installation

Choose the appropriate installation wizard (customer or technician) below or proceed to the AP mode or WPS mode section to begin adding the camera.

Customer - Mobile App Installation Wizard


- 1 Log in to the Mobile App. You will need the username and password of the account to log in.
- 2 Tap the navigation menu.
- 3 Tap **+ Add Device > Video Camera > ADC-V515**.
(If you do not see the Add Device option, please use the AP mode or WPS mode instructions below to complete your installation.)
- 4 Follow the on-screen instructions to finish adding the camera.

Service Provider Technician - MobileTech Installation

- 1 Log in to MobileTech.
- 2 Select the customer's account.
- 3 Tap **Quick Actions > Add Device > Video**.
- 4 Follow the on-screen instructions to finish adding the camera.

AP mode

To ensure sufficient Wi-Fi signal, complete these steps with the camera near its final location but prior to mounting.

- 1 Connect the camera's AC power adapter and plug it into a non-switched outlet.
- 2 The camera's LED will begin to blink white.
If the LED is not white after two minutes, hold down the **Reset button**  and release when the LED begins to blink white (about 6 seconds).


continued

- 3 On an Internet enabled device, connect to the Wi-Fi network **ADC-V515 (XX:XX:XX)** where XX:XX:XX is the last six characters of the ADC-V515's MAC address, which is located on the camera or on the packaging.
- 4 On the same device, open a web browser and enter **http://v515install** in the URL field. Follow the on-screen instructions to add the ADC-V515 to the Wi-Fi network. The LED will be solid green when the connection is complete.
- 5 Add the device to the account by either selecting the account in MobileTech or by using a web browser and entering the following URL: **www.alarm.com/addcamera** (you will need the customer user name and password).
- 6 Select the camera from the video device list or enter its MAC address to begin adding the camera. The MAC address is located on the camera or on the packaging.
- 7 Follow the on-screen instructions to finish adding the camera.

You can now power down the camera and install it in its final location using the included hardware. You may configure camera settings from the Customer Website.

WPS mode

To ensure sufficient Wi-Fi signal, complete these steps with the camera near its final location but prior to mounting.

- 1 Connect the camera's AC power adapter and plug it into a non-switched outlet.
- 2 Hold down the **Reset button**  on the back of the camera and release when the LED begins to blink blue (about 3 seconds).
- 3 Activate the WPS mode on the router. The camera will begin to connect to the Wi-Fi network. The LED will be solid green when the connection is complete.
- 4 Add the device to the account by either selecting the account in MobileTech or by using a web browser and entering the following URL: **www.alarm.com/addcamera** (you will need the customer username and password).

continued

- 5 Select the camera from the video device list or type in its MAC address to begin adding the camera. The camera's MAC address is located on the camera or on the packaging.
- 6 Follow the on-screen instructions to finish adding the camera.

You can now power down the camera and install it in its final location using the included hardware. You may configure camera settings from the Customer Website.

Status light guide



Off - Power off



Solid green - Connected to Alarm.com



Blinking green - Local network connection



Blinking green and red - Reverting to factory default settings



Blinking red - Power on, camera booting



Solid red - No local or Internet connection




Blinking blue - WPS mode



Blinking white - Wi-Fi Access Point mode

Troubleshooting

- If you have issues connecting the camera to the account, power cycle the camera and try again.
- If issues persist, press and hold the **Reset button**  located on the bottom of the camera until the LED is blinking green and red (about 15 seconds), then release the button. The camera will reboot with factory default settings.

If the camera was previously installed to an Alarm.com account, it will need to be deleted before it can be installed again.

Questions?

Visit answers.alarm.com
or contact your service provider.

Notices

Federal Communication Commission interference statement

This equipment has been tested and found to comply with the limits for a Class B digital device, pursuant to part 15 of the FCC Rules. These limits are designed to provide reasonable protection against harmful interference in a residential installation. This equipment generates, uses and can radiate radio frequency energy and, if not installed and used in accordance with the instructions, may cause harmful interference to radio communications. However, there is no guarantee that interference will not occur in a particular installation. If this equipment does cause harmful interference to radio or television reception, which can be determined by turning the equipment off and on, the user is encouraged to try to correct the interference by one or more of the following measures:

- Reorient or relocate the receiving antenna.
- Increase the separation between the equipment and receiver.
- Connect the equipment into an outlet on a circuit different from that to which the receiver is connected.
- Consult the dealer or an experienced radio/TV technician for help. Changes or modifications not expressly approved by the party responsible for compliance could void the user's authority to operate this equipment.

FCC Radiation Exposure Statement:

This equipment complies with FCC radiation exposure limits set forth for an uncontrolled environment. This equipment should be installed and operated with minimum distance 20cm between the radiator & your body.

IC statement

This device contains licence-exempt transmitters(s)/receiver(s) that comply with Innovation, Science and Economic Development Canada's licence-exempt RSS(s). Operation is subject to the following two conditions:

- This device may not cause interference.
- This device must accept any interference, including interference that may cause undesired operation of the device.

Cet appareil contient des émetteurs/récepteurs exemptés de licence conformes à la norme Innovation, Sciences, et Développement économique Canada. L'exploitation est autorisée aux deux conditions suivantes:

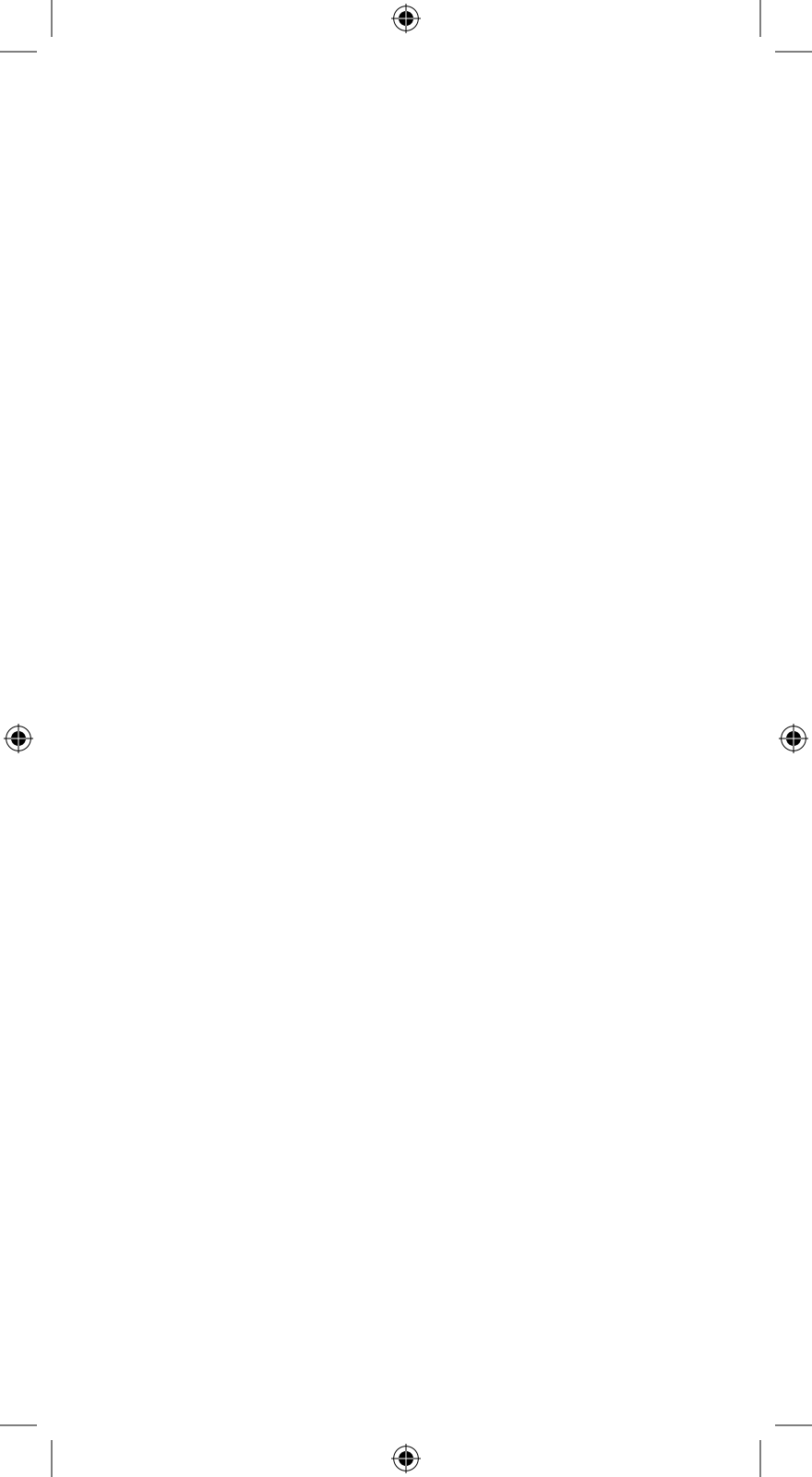
- L'appareil ne doit pas produire de brouillage.
- L'utilisateur de l'appareil doit accepter tout brouillage radioélectrique subi, même si le brouillage est susceptible d'en compromettre le fonctionnement.

RF exposure statement:

IC Radiation Exposure Statement

This equipment complies with IC RSS-102 radiation exposure limit set forth for an uncontrolled environment. This equipment should be installed and operated with minimum distance 20cm between the radiator and your body.

Déclaration d'exposition à la radiation : Cet équipement respecte les limites d'exposition aux rayonnements IC définies pour un environnement non contrôlé. Cet équipement doit être installé et mis en marche à une distance minimale de 20 cm qui sépare l'élément rayonnant de votre corps. L'émetteur ne doit ni être utilisé avec une autre antenne ou un autre émetteur ni se trouver à leur proximité.





8281 Greensboro Drive
Suite 100
Tysons, VA 22102

200630
© 2020 Alarm.com.
All rights reserved.