

MCSS20086316

nVent HOFFMAN MCSS Enclosure Floor Standing 316 Stainless Steel IP55 H2000 X W800 X D600mm



FLOOR STANDING ENCLOSURES



Component type	Enclosure/cabinet (empty)
Range	MCSS/MCDS
Model	N/A
Product status	Existing

The nVent HOFFMAN bayable stainless steel enclosures are available in a range of sizes with single or double door and mounting plate included. With high impact and ingress protection, offering a robust and durable solution, resistant to corrosion in marine and other harsh environments. Patented Snapline accessories install without tools, saving significant time and simplifying customisation.

ELECTRICAL

EMC-version	No
Material	Stainless steel
Material quality	Stainless steel V4A
Surface finishing	Brushed/grinded
Enclosure load capacity	611 kg
Door load capacity	61 kg
Material thickness	1.5 mm
Colour	Stainless steel
IP rating	IP55
Degree of protection (NEMA)	12
Type of lock	DIN 1/4 turn
Lock diameter	3 mm
Material lock	Stainless steel
Gland plate(s) included	Yes

CONSTRUCTION

With mounting plate	Yes
Mounting plate depth-adjustable	Yes
Floor standing wall model	Yes
Suitable for wall mounting	No
Connectable	Yes

MECHANICAL

Number of doors	1
Number of locks	1
Suitable for wall built-in	No
Pole fastening	No
Suitable for outdoor set-up	Yes
Pitched roof	No
With glazed door	No

MCSS20086316

nVent HOFFMAN MCSS Enclosure Floor Standing 316 Stainless Steel IP55 H2000 X W800 X D600mm



FLOOR STANDING ENCLOSURES



MECHANICAL

With ventilation door	No
With backside door	No
Impact strength	IK10

DIMENSIONS

Width	800 mm
Height	2000 mm
Depth	600 mm
Weight	132 kg

MCSS20086316

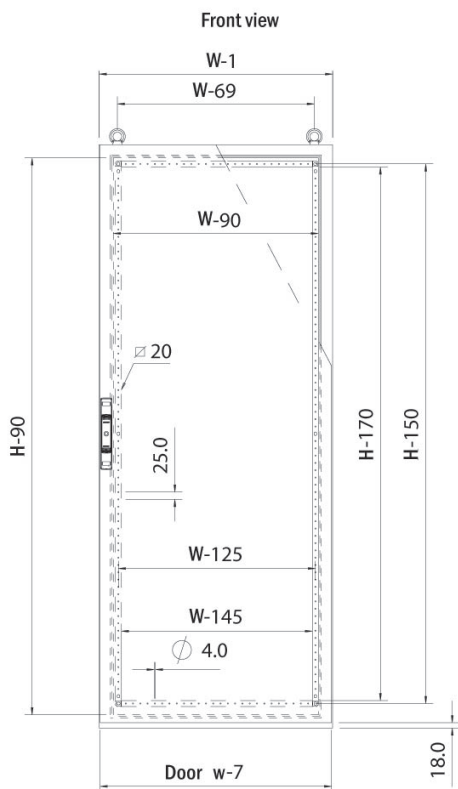
nVent HOFFMAN MCSS Enclosure Floor Standing 316 Stainless Steel IP55 H2000 X W800 X D600mm



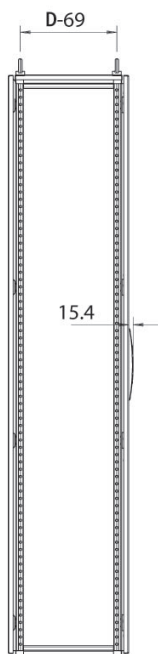
FLOOR STANDING ENCLOSURES



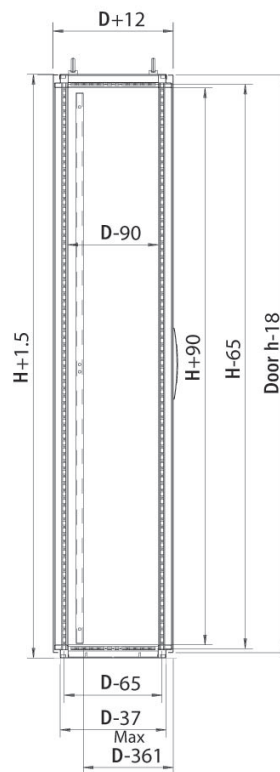
DIMENSIONAL DIAGRAM



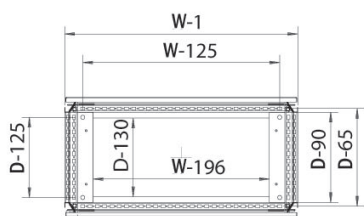
Side view



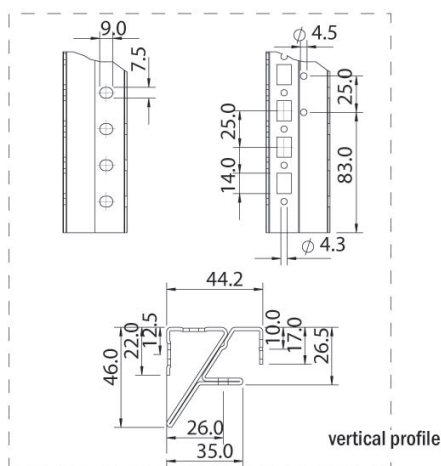
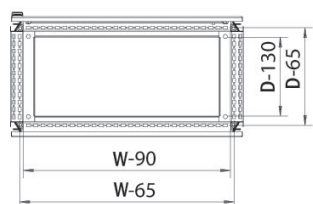
Sectional side view



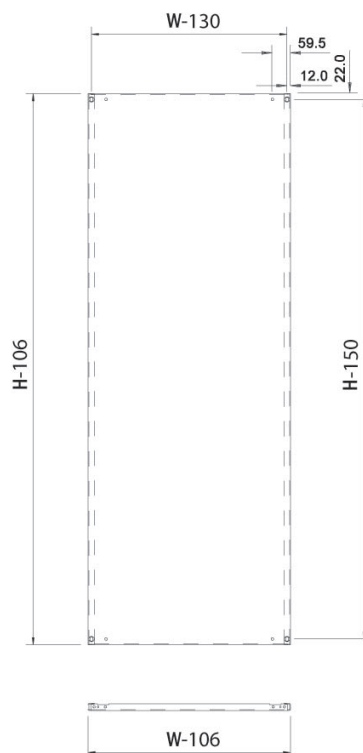
Sectional top view (without bottom plates) W= 600 x 1000



Sectional bottom view W= 600 x 1000



Mountingplate



MCSS20086316

nVent HOFFMAN MCSS Enclosure Floor Standing 316 Stainless Steel IP55 H2000 X W800 X D600mm



FLOOR STANDING ENCLOSURES



RELATED PRODUCTS

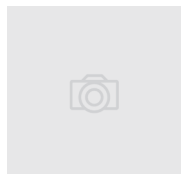
ACCESSORY



Item No: CCBS02

Required: No

Description: nVent HOFFMAN FS Wall Fixing Brackets 304 Stainless Steel (Qty 2)



Item No: CCI6

Required: No

Description: nVent HOFFMAN MCS/MCD FS Bypass Kit Internal Qty 6



Item No: CCM04

Required: No

Description: nVent HOFFMAN MCS/MCD/MCSS/MCDS FS Bypass Kit Internal Corner Qty 4



Item No: DA28400

Required: No

Description: STEGO Pressure Compensation Device Plastic M40 IP66 and X9K Qty 2



Item No: DA28404000

Required: No

Description: STEGO Pressure Compensation Device Aluminium M12 IP67 Qty 1



Item No: DA28406

Required: No

Description: STEGO Pressure Compensation Device Plastic M12 IP66 and X9K Qty 2



Item No: DA28420000

Required: No

Description: STEGO Pressure Compensation Device Plastic M40 IP66 Qty 1



Item No: DA28455

Required: No

Description: STEGO Pressure Compensation Device 303 Stainless M40 IP66 and X9K



Item No: DD084

Required: No

Description: STEGO Drainage Device Plastic IP66 and IP67 and IP69K M50



Item No: DI2008R5

Required: No

Description: nVent HOFFMAN MCS/MCSS/MKS/EKSS FS Inner Door Mild Steel RAL 7035 suit H2000 x W800mm



Item No: DSW01

Required: No

Description: nVent HOFFMAN MCS/MCD/MKS/MKD Door Switch 3A 230V fits On Hole Pattern FS Enclosures



Item No: EFCS20316

Required: No

Description: nVent HOFFMAN MCSS/MCDS/EKSS/EKDS Fan Cover 316 Stainless Steel suits GSV1000 and GSF10



Item No: EFCS2530316

Required: No

Description: nVent HOFFMAN MCSS/MCDS/EKSS/EKDS Fan Cover 316 Stainless Steel suits GSV1500/2000/250X/GSD15/20



Item No: EFCS5060316

Required: No

Description: nVent HOFFMAN MCSS/MCDS/EKSS/EKDS Fan Cover 316 Stainless Steel suits GSV30XX and GSF



Item No: GSF10

Required: No

Description: Cosmotec Kryos Grille and Filter H119 x W119 x D29mm



Item No: GSF15

Required: No

Description: Cosmotec Kryos Grille and Filter H152 x W152 x D33mm



Item No: GSF20

Required: No

Description: Cosmotec Kryos Grille and Filter H204 x W204 x D34mm



Item No: GSF25

Required: No

Description: Cosmotec Kryos Grille and Filter H250 x W250 x D48mm

MCSS20086316

nVent HOFFMAN MCSS Enclosure Floor Standing 316 Stainless Steel IP55 H2000 X W800 X D600mm



FLOOR STANDING ENCLOSURES



RELATED PRODUCTS

ACCESSORY



Item No: GSF30

Required: No

Description: Cosmotec Kryos Grille and Filter H318 x W318 x D34mm



Item No: GSV1000203

Required: No

Description: Cosmotec Kryos Filter Fan H119 x W119 x D58mm 115V AC 35m3 per Hour



Item No: GSV1000210

Required: No

Description: Fibox GSV Filter Fan H119 x W119 x D58mm 12V DC 50m3 per Hour



Item No: GSV1000211

Required: No

Description: Cosmotec Kryos Filter Fan H119 x W119 x D58mm 24V DC 35m3 per Hour



Item No: GSV1000220

Required: No

Description: Cosmotec Kryos Filter Fan H119 x W119 x D58mm 230V AC 35m3 per Hour



Item No: GSV1500203

Required: No

Description: Cosmotec Kryos Filter Fan H152 x W152 x D75mm 115V AC 67m3 per Hour



Item No: GSV1500211

Required: No

Description: Cosmotec Kryos Filter Fan H152 x W152 x D75mm 24V DC 67m3 per Hour



Item No: GSV1500220

Required: No

Description: Cosmotec Kryos Filter Fan H152 x W152 x D75mm 230V AC 67m3 per Hour



Item No: GSV2000203

Required: No

Description: Cosmotec Kryos Filter Fan H204 x W204 x D98mm 115V AC 108m3 per Hour



Item No: GSV2000211

Required: No

Description: Cosmotec Kryos Filter Fan H204 x W204 x D98mm 24V DC 108m3 per Hour



Item No: GSV2000220

Required: No

Description: Cosmotec Kryos Filter Fan H204 x W204 x D98mm 230V AC 108m3 per Hour



Item No: GSV2500203

Required: No

Description: Cosmotec Kryos Filter Fan H250 x W250 x D118mm 115V AC 190m3 per Hour



Item No: GSV2500211

Required: No

Description: Cosmotec Kryos Filter Fan H250 x W250 x D118mm 24V DC 190m3 per Hour



Item No: GSV2500220

Required: No

Description: Cosmotec Kryos Filter Fan H250 x W250 x D118mm 230V AC 190m3 per Hour



Item No: GSV2501203

Required: No

Description: Cosmotec Kryos Filter Fan H250 x W250 x D99mm 115V AC 270m3 per Hour



Item No: GSV2501220

Required: No

Description: Cosmotec Kryos Filter Fan H250 x W250 x D99mm 230V AC 270m3 per Hour



Item No: GSV3000203

Required: No

Description: Cosmotec Kryos Filter Fan H318 x W318 x D139mm 115V AC 500m3 per Hour



Item No: GSV3000220

Required: No

Description: Cosmotec Kryos Filter Fan H318 x W318 x D139mm 230V AC 500m3 per Hour

MCSS20086316

nVent HOFFMAN MCSS Enclosure Floor Standing 316 Stainless Steel IP55 H2000 X W800 X D600mm



FLOOR STANDING ENCLOSURES



RELATED PRODUCTS

ACCESSORY



Item No: GSV3001203

Required: No

Description: Cosmotec Kryos Filter Fan H318 x W318 x D135mm 115V AC 700m3 per Hour



Item No: GSV3001220

Required: No

Description: Cosmotec Kryos Filter Fan H318 x W318 x D135mm 230V AC 700m3 per Hour



Item No: GSV3002220

Required: No

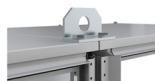
Description: Cosmotec Kryos Filter Fan H318 x W318 x D161mm 230V AC 850m3 per Hour



Item No: GSV3002262

Required: No

Description: Cosmotec Kryos Filter Fan H318 x W318 x D161mm 400V AC 850m3 per Hour



Item No: LC02

Required: No

Description: nVent HOFFMAN MCS/MCD FS Lifting Device Zinc Plated Steel Qty 2



Item No: LE9304

Required: No

Description: nVent HOFFMAN MCS/MCD FS Lifting Eye Bolt Zinc Plated Steel M12 Qty 4



Item No: PFS1080316

Required: No

Description: nVent HOFFMAN MCSS/MCDS/EKSS/EKDS FS Plinth 316 Stainless Steel Front and Back H100 x W800mm



Item No: PFS2080316

Required: No

Description: nVent HOFFMAN MCSS/EKSS Floor Standing Plinth Stainless Steel Front and Back H200 x W800mm



Item No: PSS1060316

Required: No

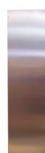
Description: nVent HOFFMAN MCSS/MCDS/EKSS/EKDS FS Plinth 316 Stainless Steel Sides H100 x D600mm



Item No: PSS2060316

Required: No

Description: nVent HOFFMAN MCSS/MCDS/EKSS/EKDS FS Plinth 316 Stainless Steel Sides H200 x D600mm



Item No: SPMS2006316

Required: No

Description: nVent HOFFMAN MCSS/MCDS Floor Standing Side Panel 1.5mm 316 Stainless Steel H2000 x D600mm QTY 2



Item No: TLCS01

Required: No

Description: nVent HOFFMAN MCS/MCD/MKS/MKD FS Door Switch for TLC Lights 25W 1.5m Cable