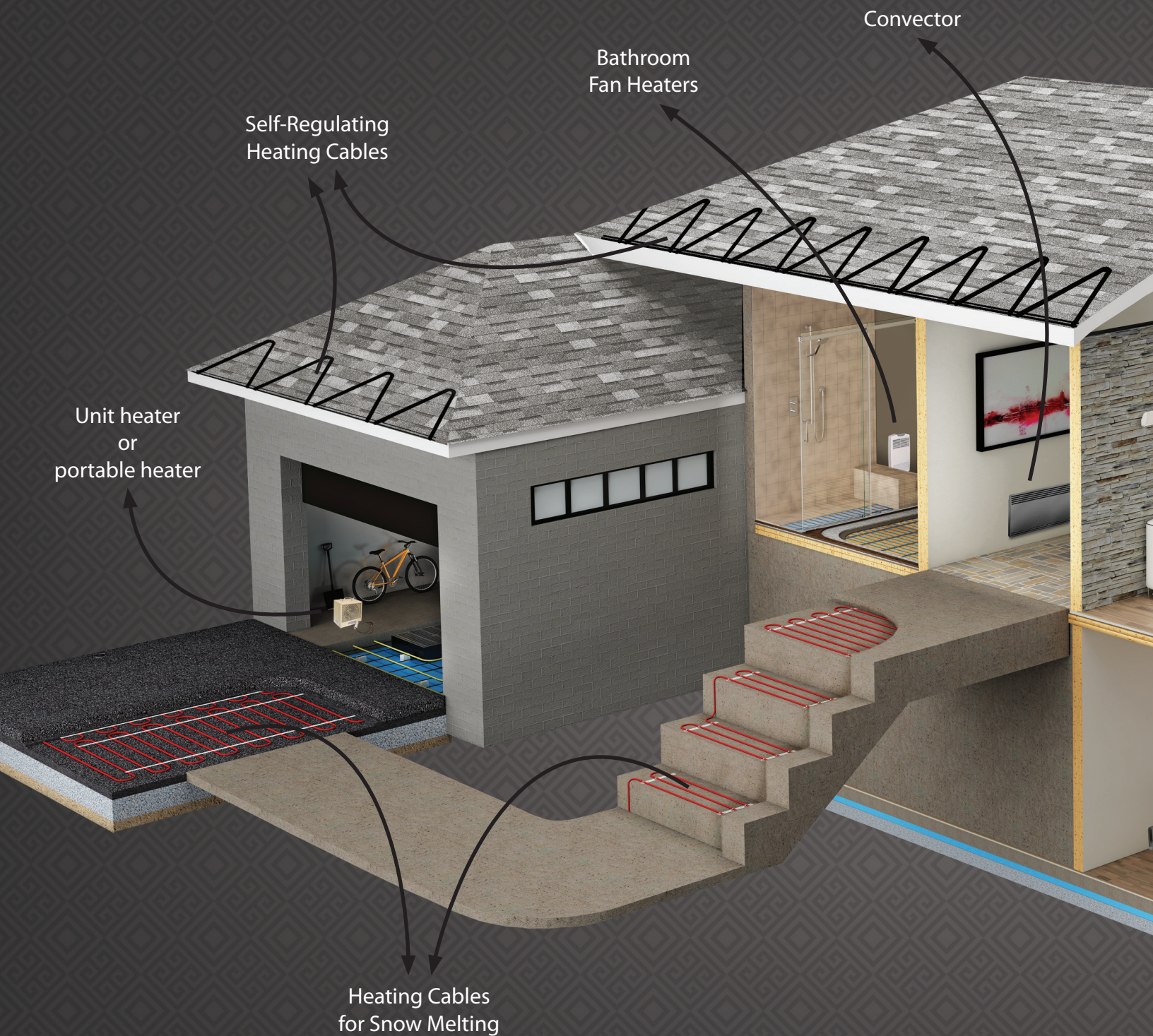


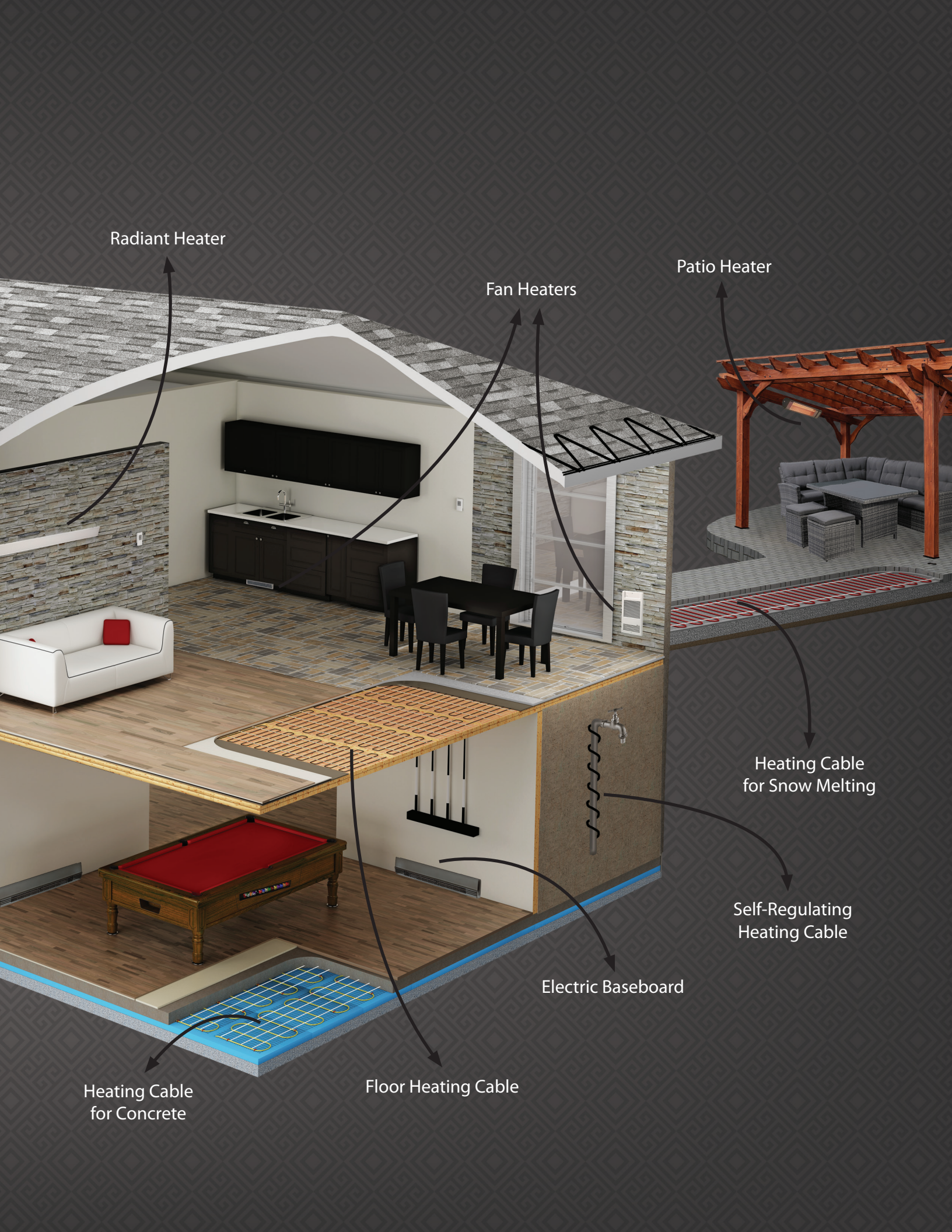


— THE BRAND —
of professionals

OUR ELECTRIC HEATING SOLUTIONS FOR YOUR HOME

OUR ELECTRIC HEATING SOLUTIONS FOR YOUR HOME





Radiant Heater

Fan Heaters

Patio Heater

Heating Cable for Snow Melting

Self-Regulating Heating Cable

Electric Baseboard

Heating Cable for Concrete

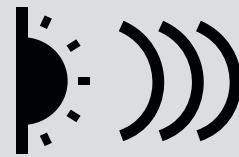
Floor Heating Cable

GLOSSARY



NATURAL CONVECTION

Because there is no motor needed to circulate air around the room, natural convection heating systems are completely silent.



RADIANT HEATING

Just like the sun's rays, radiant heating produces a soft and enveloping warmth. The air is not dried out or moved around by the heat, which creates a more comfortable environment. Radiant heating warms objects and people rather than the surrounding air, so it generates warmth and comfort at lower temperatures. This results in lower heating bills.



BLOWER HEATERS

Blower heater fans produce immediate and intense heat by pushing hot air around the room. They are a great choice for bathrooms, hallways and garage.



SELF-REGULATING

Self-regulation takes advantage of the thermosensitive properties of materials. Cable components expand or contract to increase or decrease the cable's power in response to a drop or rise in temperature.

TABLE OF CONTENTS

TRADITIONAL HEATING			HEATING FOR GARAGES		
Convectors			Unit Heaters and Portable Heater		
OCE	European-Style	6	ODS	Ceiling Fan Heater	20
OCT	Contemporary	6	OAE	Economical Unit Heater	20
ONC	Standard	6	OCC	Portable Construction Heater	20
Electric Baseboards			HEATING CABLES - INDOOR USE		
ODL	High-End	8	Floor heating cables		
OFM	Standard	8	OTR	for Membrane	22
OPP	Patio Door	8	OTM	on Mat	22
OPPM	Mini Patio Door	8	OWF-R	for Installation with Strapping	22
Wall Radiant Cove Heater			Heating cables for concrete		
ORC	Radiant Cove Heater	10	OWC-M	on Mat	24
Bathroom Fan Heaters			OWC-R	in Reel	24
OHY	Convection and Fan Heater	12	HEATING CABLES - OUTDOOR USE		
OVC	Electronic and compact	12	Heating Cable for Snow Melting		
OVE	European-Style	12	OWS-T	on Mat	26
Compact Fan Heaters			Self-Regulating Heating Cables		
OFB	Compact Wall	14	OSR-NA	All Purpose	28
OVRP	Compact Ceiling	14	OSR-PI	120V Preassembled	28
OVS	Residential Wall	14	OSR-MA-BF	Potable Water	28
Kickspace and Floor Insert Fan Heaters			TABLE OF PRODUCTS		
OCP	Kickspace	16	Table of products		
OFH	Floor Insert	16	30		
Patio Infrared Heater			COLOR CHART		
OCF	Patio Infrared Heater	18	Standard Colors		
			Optional Colors		
			35		

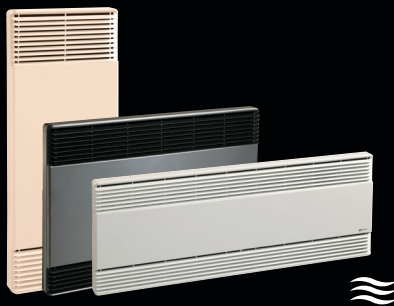


CONVECTORS

Thanks to their compact size, convectors offer many different installation options. Their design boosts the chimney effect, so hot air can be circulated faster and more evenly than with baseboard heaters.



WARRANTY
5-year against defects



EUROPEAN-STYLE

OCE Series



CONTEMPORARY

OCT Series



STANDARD

ONC Series

- **Aluminum monoblock element**
Fast and whisper-quiet heat distribution
- **Integrated electronic thermostat available**
Greater precision and efficient management for your energy needs
- **Available in 2500W and 3000W**
To heat larger spaces effectively
- **Different sizes available**
A range of sizes available to fit with any room's characteristics
- **Standard colors**
White and almond
Stainless steel finish available

- **Aluminum monoblock elements**
Fast and whisper-quiet heat distribution
- **Integrated electronic thermostat available**
Greater precision and efficient management for your energy needs
- **Standard colors**
White and metallic charcoal

- **Electric baseboard elements**
Economical option with the same quality
- **Integrated electronic thermostat available**
- **Standard color**
White



ELECTRIC BASEBOARDS

Electric baseboards are ideal for installation under a window. They create a layer of warm air between the window pane and the room, which adds comfort and prevents condensation.





WARRANTY
5-year against defects
Lifetime on heating element

WARRANTY
5-year against defects
Lifetime on heating element

WARRANTY
3-year against defects
10-year on heating element



HIGH-END

ODL Series



STANDARD

OFM Series



PATIO DOOR

OPP and OPPM Series

- **Heavy-duty extruded aluminum construction**

Rust and shock resistant

- **Safety**

The closed face safely conceals the heating element so small fingers cannot reach it

- **Ideal size for renovations**

Because it is just a little larger than a standard baseboard, you can install it as part of your renovations without the need for new molding or paint touch-ups

- **Standard colors**

White and metallic charcoal

- **Our trademark reliability!**

A tried and trusted economical solution

- **Standard colors**

White and almond

- **Anti-fogging solution**

Prevents condensation from forming on windows

- **Sturdy steel construction**

The baseboard can be used as a step

- **Range of sizes available**

Choose the Mini or the standard size

OPP Series : dimensions 4" x 4"

OPPM Series : dimensions 3" x 3"

- **Standard colors**

White and almond

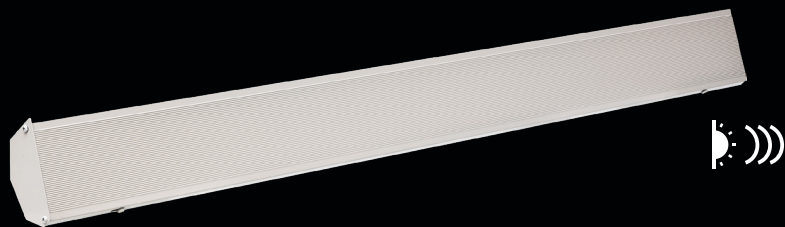


WALL RADIANT COVE HEATER

Generating enveloping, cost-effective, uniform and constant heat, a radiant cove heater is a safe and "green" solution that harnesses the benefits of radiant heating, a naturally occurring process in nature. An ORC unit can be installed high up on the walls, imparting class and stylish aesthetics to any decor.



WARRANTY
10-year against defects



RADIANT COVE HEATER

ORC Series

- **Enveloping warmth**
The air is not dried out or moved around by the heat, which creates a more comfortable environment
- **Installed high up**
Out of reach of little ones and leaves the bottom of walls free
- **Standard colors**
White, mat black and anodized aluminum finish



BATHROOM FAN HEATERS

Designed for rooms with limited wall space and high heating requirements, our range of bathroom fan heaters includes high-performance and efficient units that provide instant heat.





CONVECTION AND FAN HEATER

OHY Series



ELECTRONIC AND COMPACT

OVC Series



EUROPEAN-STYLE

OVE Series

- **Combining the quiet operation of convection and the immediacy of a fan**
Convection heating ensures a minimum temperature is maintained in the room, while forced air provides instant heat as needed
- **Built-in electronic digital thermostat/timer**
Switches automatically from convection to fan mode at 1000W
- **Backlit display and night light**
Built-in night light that emits a soft glow
- **Cast aluminum front cover**
Rust and shock resistant
- **Standard colors**
White and almond

- **Model with power selector available (-PW option)**
Allows the heating power to be selected (750W or 1500W) during installation (wall-mounted thermostat required, sold separately)
- **Model with built-in electronic digital thermostat (-TH option)**
Automatic adjustment of fan speed and heating output from 750W to 1500W when needed
- **20-gauge steel and cast aluminum front cover**
Rust and shock resistant
- **Standard color**
White

- **Instant heat**
This unit is ideal for bathrooms, hallways and corridors where heat escapes
- **Built-in mechanical thermostat and timer available**
For rapid bathroom heating
- **Standard colors**
White and almond
Stainless steel finish available



COMPACT FAN HEATERS

Ideal for areas with limited space, compact wall fan heaters can be mounted in several different positions. They are the ideal combination of efficiency and versatility.





WARRANTY
2-year against defects
5-year on heating element

WARRANTY
5-year against defects

WARRANTY
5-year against defects



COMPACT WALL

OFB Series



COMPACT CEILING

OVRP Series



RESIDENTIAL WALL

OVS Series

- **Installation high up on the wall**
Out of reach of little ones and leaves the bottom of walls free
- **Ultra-quiet fan**
- **Standard color**
White

- **Ceiling installation**
Unobtrusive ceiling location whether recessed or surface-mounted
- **Standard colors**
White and almond

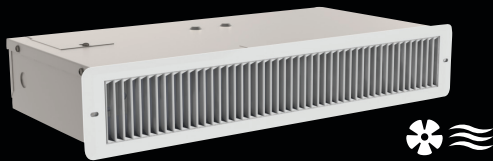
- **Multiple installation positions**
Can be mounted horizontally or vertically to control the direction of air flow
Can be recessed or surface-mounted
- **Standard colors**
White and almond



KICKSPACE AND FLOOR INSERT FAN HEATERS

With their small size and high heat output, kickspace and floor insert fan heaters are an excellent alternative solution for your space problems.





KICKSPACE

OCP Series

- **Small-space solution**
Slides in under a stair step, kitchen cabinets and bathroom vanities
- **Standard colors**
Semi-gloss black, white and almond

Do not install near thermosensitive materials.



FLOOR INSERT

OFH Series

- **Air vent replacement solution**
As well as filling the space left by air vents, they offer comfort and versatility
- **Protective screen**
Prevents foreign objects from falling inside the unit
- **Standard colors**
Bronze, white and almond



PATIO INFRARED HEATER

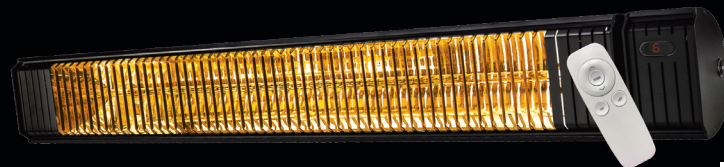
Using an advanced carbon fiber emitter technology, the patio heater generates instant directional infrared heat while emitting a soft ambient glow. The OCF is a great solution for outdoor living areas as it provides a pleasant warmth, especially for cool evenings.





WARRANTY

1-year against defects
90-day on the element



PATIO INFRARED HEATER

OCF Series

- **Stay comfortable in cooler weather**
This unit warms people and objects directly, just like sun rays does
- **Two types of installations possible**
The 1500W model can be wall-mounted, while the 3000/4000/6000W units can be ceiling-mounted or wall-mounted
- **Control:** Remote with 6 control levels included for the 1500W & 3000W models.
For the 4000W & 6000W models, two heating controls.
- **Finish**
Black anodized aluminum
- **IP65**
Weatherproof IP65 certified for outdoor use



UNIT HEATERS AND PORTABLE HEATER

These reliable and efficient heating units are ideal for workshops and garages. By producing instant and focused heat, you can switch on the unit when needed and feel the warmth right away.





CEILING
FAN HEATER

ODS Series



ECONOMICAL
UNIT HEATER

OAE Series



PORTABLE
CONSTRUCTION HEATER

OCC Series

- **Rapid space heater**
Driven by a powerful motor, the fan circulates the warm air that accumulates at the ceiling
- **Practical solution**
Installs in the ceiling to optimize use of space
- **Constant circulation mode**
Ideal for creating good air flow

- **Adjustable louvres**
Directs air flow to where it's needed
- **Ceiling or wall-mount installation**
Includes mounting brackets that allow the unit to be rotated 360°
- **Built-in thermostat included**

- **Backup and permanent heating options**
A hardwired version is available for a permanent heating solutions or portable version
- **Built-in thermostat included**
- **Three installation options available**
Portable, wall/ceiling mount and hardwired





FLOOR HEATING CABLES

Our floor heating cable options provide comfort and wellbeing through radiant heating. By heating the floor rather than the surrounding air, they provide indirect, diffused heat that radiates from the floor up. This heat is absorbed by surrounding objects, and they in turn help to warm the entire room.

- **Can act as the main heating source**
In many cases, floor heating cables are able to heat the entire house
- **Provides excellent comfort without intense heat**
Keeps feet warm at all times
- **Helps to alleviate allergies**
The air is not dried out or moved around by the heat
- **Invisible**
Much greater freedom for arranging furniture
- **Completely silent**
- **Adds value to your property**



FOR MEMBRANE

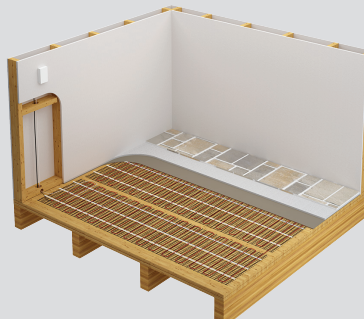
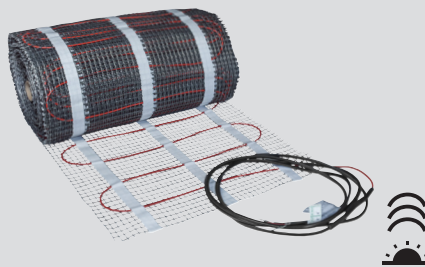
OTR Series



- Installation on uncoupling self-adhesive membrane sold as an option

ON MAT

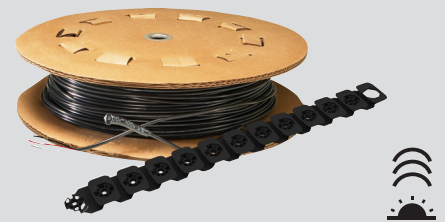
OTM Series



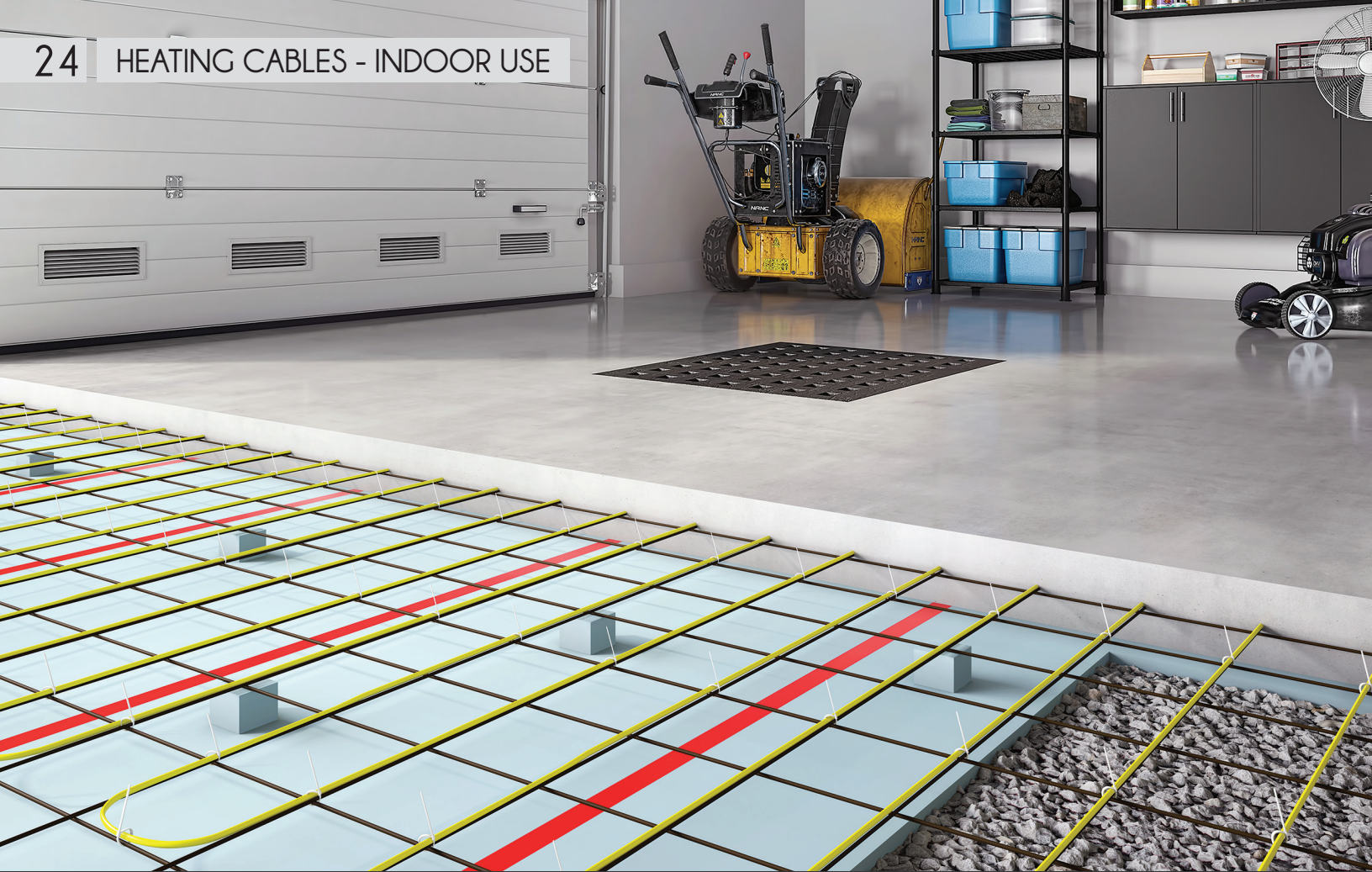
- Fastened to an adhesive fiberglass mat

FOR INSTALLATION WITH STRAPPING

OWF-R Series



- Plastic strapping included



HEATING CABLES FOR CONCRETE

Ouellet heating cables for concrete are 100% energy efficient and provide clean and quiet heat without any annual maintenance required. Designed for indoor use only, they are perfect for basements, buildings that house animals, sunroom and much more.

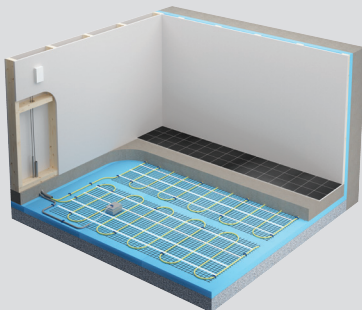
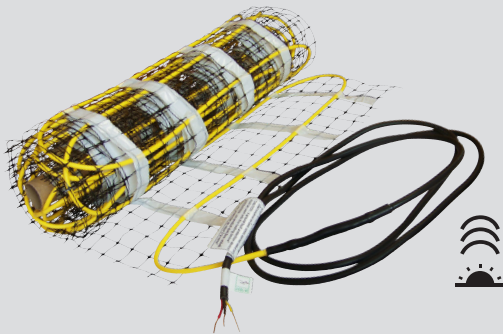
Enjoy the same benefits as floor heating cables and more besides!

- **Economical**
More economical to install and operate than a hydronic system
- **Zoning possible**
For separate control of each room
- **Clean and quiet**
No liquid or pump
- **Heated stored in the concrete**
Stored heat is gradually released over several hours, even when the power goes out



ON MAT

OWC-M Series



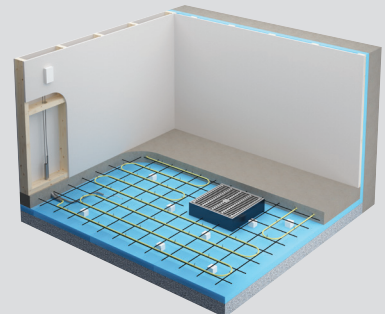
- Installation under a 4" to 6" concrete slab



- Installation under a 1.5" to 4" concrete topping

IN REEL

OWC-R Series



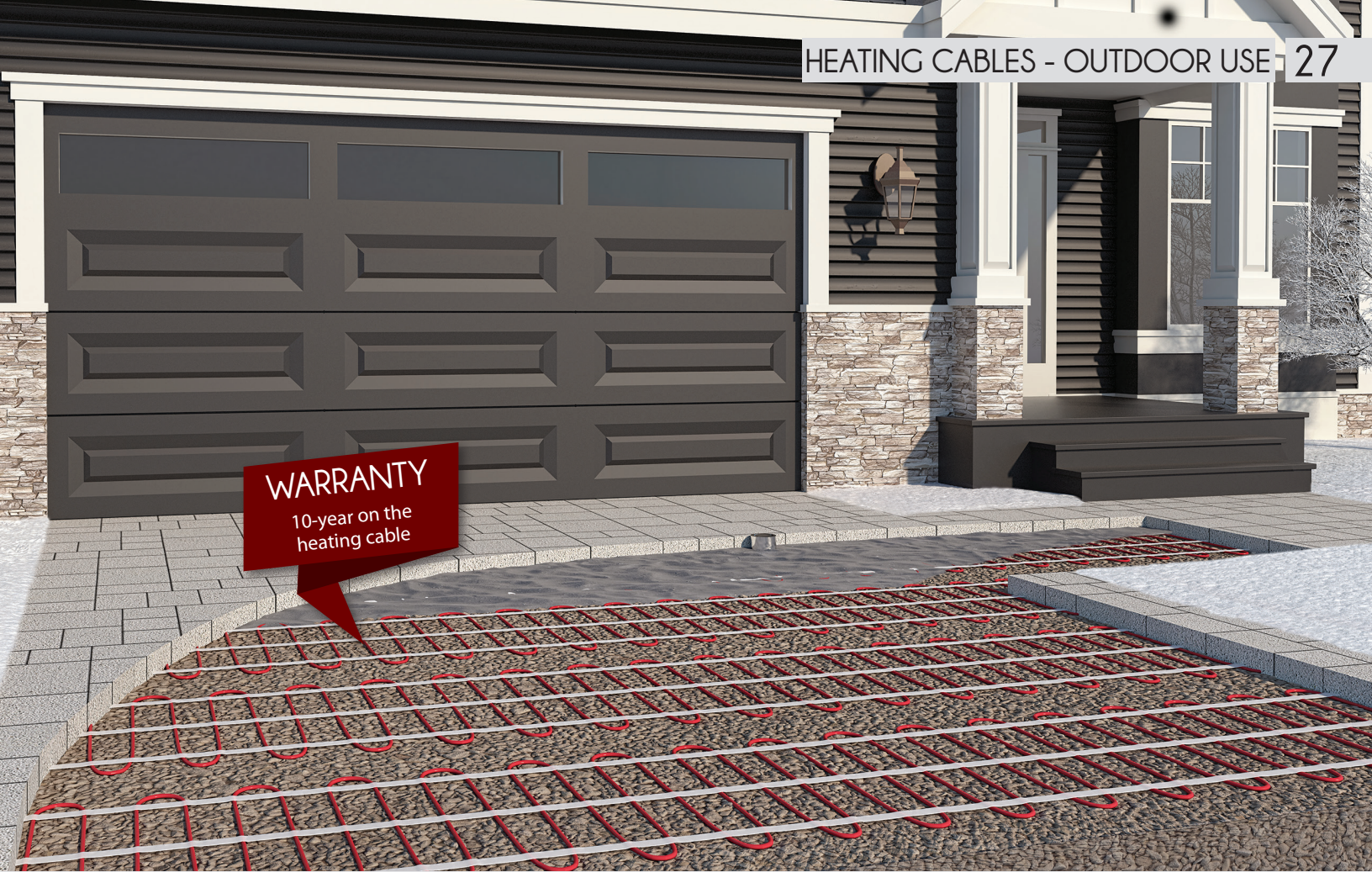
- Installation on a metallic structure or wire mesh



HEATING CABLE FOR SNOW MELTING

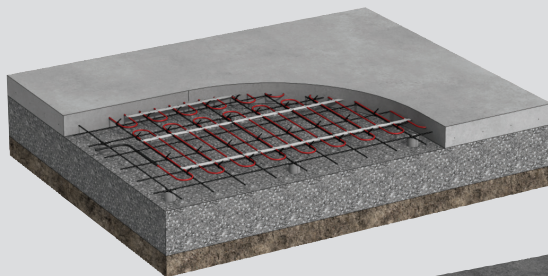
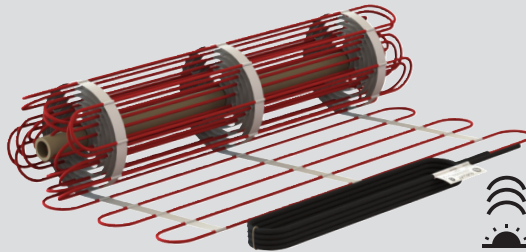
Let a heating cable for snow melting do all the work for you.
Use them in high-traffic areas to reduce ice buildup and the risk of falling.

- **Compatible with many types of surface**
Concrete, asphalt, stone dust under pavers
- **Optional automatic controllers**
They activate the snow melting system when they first detect precipitation and turn it off once the surface is dry

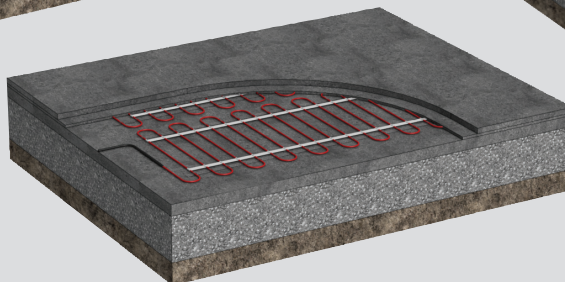


ON MAT

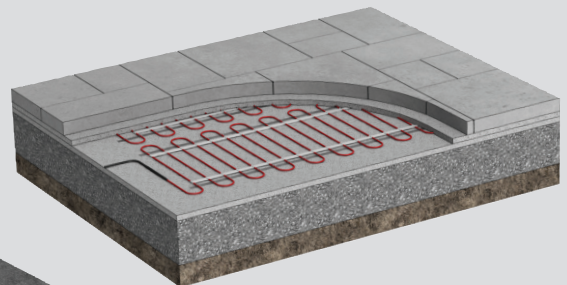
OWS-T Series



Concrete



Asphalt



Brick, concrete or
natural stone paving

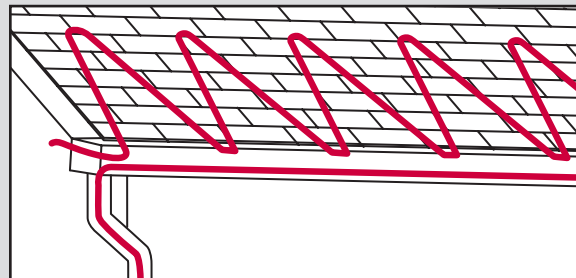


SELF-REGULATING HEATING CABLES

Roof and gutter de-icing

Ice and snow buildup can cause severe structural damage to roofs, gutters and piping. There is also an increased danger of accidents caused by falling icicles and shifting snow. Installing a suitable de-icing system can prevent ice formation and protect against property damage.

- Suitable for shingle, rubber/tar, wood, metal and plastic roofs
- Suitable for wood, metal and plastic gutters



WARRANTY

1-year on the
heating cable
(10-year limited
warranty available)

**ALL PURPOSE**

OSR-NA Series

**120V PREASSEMBLED**

OSR-PI Series

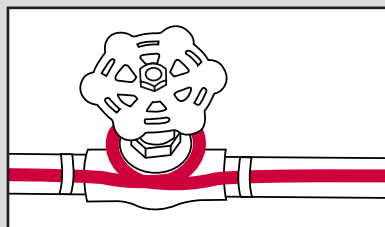
**POTABLE WATER**

OSR-MA-BF Series

Pipe tracing for freeze protection

Self-regulating heating cables are designed to compensate for heat lost from insulated pipe and piping systems. While insulated pipes retain heat much longer than uninsulated pipes, the operating temperature will eventually reach the surrounding ambient temperature. If ambient temperatures drop below freezing, an unsafe condition may arise if the components within the pipe fall below freezing temperatures.

- Suitable for metal or plastic pipes
- Approved for indoor and outdoor use



- **Approved for potable water pipes**
The BF version of OSR-MA cables will protect your potable water pipes from freezing.
- **Extremely flexible cables**
These cables are especially useful for installations which require smaller overall cable dimensions and shorter heating circuits.

TRADITIONAL HEATING						
Convectors						
OCE		European-Style				6
Watts	Volts	Product #	Product #	Product #	Length	
		Non Program- mable Built-In Thermostat ¹	Non Programmable Wall-Mounted Thermostat Included ²	Programmable Wall-Mounted Thermostat Included ²	in.	mm
OCEH Height: 27" (685 mm)						
500/375	240/208	OCEH0500-TH	OCEH0500-OTH	OCEH0500-T600	10 5/8	270
750/563	240/208	OCEH0750-TH	OCEH0750-OTH	OCEH0750-T600	13 1/2	344
1000/750	240/208	OCEH1000-TH	OCEH1000-OTH	OCEH1000-T600	16 1/2	418
1250/938	240/208	OCEH1250-TH	OCEH1250-OTH	OCEH1250-T600	19 7/16	492
1500/1125	240/208	OCEH1500-TH	OCEH1500-OTH	OCEH1500-T600	23	584
1750/1313	240/208	OCEH1750-TH	OCEH1750-OTH	OCEH1750-T600	26 1/2	674
2000/1500	240/208	OCEH2000-TH	OCEH2000-OTH	OCEH2000-T600	28 1/8	714
2500/1875	240/208	OCEH2500-TH	OCEH2500-OTH	OCEH2500-T600	34	862
3000/2250	240/208	OCEH3000-TH	OCEH3000-OTH	OCEH3000-T600	41 1/8	1044
OCEM Height: 18 1/2" (470 mm)						
500/375	240/208	OCEM0500-TH	OCEM0500-OTH	OCEM0500-T600	13 1/2	344
750/563	240/208	OCEM0750-TH	OCEM0750-OTH	OCEM0750-T600	16 1/2	418
1000/750	240/208	OCEM1000-TH	OCEM1000-OTH	OCEM1000-T600	19 7/16	492
1250/938	240/208	OCEM1250-TH	OCEM1250-OTH	OCEM1250-T600	23	584
1500/1125	240/208	OCEM1500-TH	OCEM1500-OTH	OCEM1500-T600	26 1/2	674
1750/1313	240/208	OCEM1750-TH	OCEM1750-OTH	OCEM1750-T600	30 5/16	769
2000/1500	240/208	OCEM2000-TH	OCEM2000-OTH	OCEM2000-T600	34	862
2500/1875	240/208	OCEM2500-TH	OCEM2500-OTH	OCEM2500-T600	41 1/8	1044
3000/2250	240/208	OCEM3000-TH	OCEM3000-OTH	OCEM3000-T600	48 3/8	1229
OCEB Height: 14" (356 mm)						
500/375	240/208	OCEB0500-TH	OCEB0500-OTH	OCEB0500-T600	19 7/16	492
750/563	240/208	OCEB0750-TH	OCEB0750-OTH	OCEB0750-T600	23	584
1000/750	240/208	OCEB1000-TH	OCEB1000-OTH	OCEB1000-T600	26 1/2	674
1250/938	240/208	OCEB1250-TH	OCEB1250-OTH	OCEB1250-T600	34	862
1500/1125	240/208	OCEB1500-TH	OCEB1500-OTH	OCEB1500-T600	36 3/8	924
1750/1313	240/208	OCEB1750-TH	OCEB1750-OTH	OCEB1750-T600	41 1/8	1044
2000/1500	240/208	OCEB2000-TH	OCEB2000-OTH	OCEB2000-T600	46 7/16	1179
2500/1875	240/208	OCEB2500-TH	OCEB2500-OTH	OCEB2500-T600	62 3/16	1579
3000/2250	240/208	OCEB3000-TH	OCEB3000-OTH	OCEB3000-T600	69 5/16	1760

¹ Almond product comes with almond built-in thermostat.
² Wall-mounted thermostat is white.

OCT		Contemporary				6
Watts	Volts	Product #	Product #	Length		
		Without Thermostat ¹	Non Programmable Integrated Thermostat	in.	mm	
500/375	240/208	OCT0500	OCT0500-THO	18	457	
750/563	240/208	OCT0750	OCT0750-THO	20 3/4	527.5	
1000/750	240/208	OCT1000	OCT1000-THO	23 9/16	598	
1250/938	240/208	OCT1250	OCT1250-THO	26 5/16	668.5	
1500/1125	240/208	OCT1500	OCT1500-THO	29 1/16	739	
1750/1313	240/208	OCT1750	OCT1750-THO	31 7/8	809.5	
2000/1500	240/208	OCT2000	OCT2000-THO	34 5/8	880	

¹ The OCT warranty is valid only if the heater is controlled by a proportional electronic pulsing line thermostat with a cycle of 15 seconds maximum.

ONC		Standard				6
Volts	Watts	Product #	Product #	Length		
		Without Thermostat	Built-in Thermostat	in.	mm	
120	500	ONC0502BL	ONC0502BL-TH	18	457	
120	1000	ONC1002BL	ONC1002BL-TH	23 9/16	598	
120	1500	ONC1502BL	ONC1502BL-TH	29 1/16	739	
208	500	ONC0508BL	ONC0508BL-TH	18	457	
208	1000	ONC1008BL	ONC1008BL-TH	23 9/16	598	
208	1500	ONC1508BL	ONC1508BL-TH	29 1/16	739	
208	2000	ONC2008BL	ONC2008BL-TH	34 5/8	880	
240/208	500/375	ONC0500BL	ONC0500BL-TH	18	457	
240/208	1000/750	ONC1000BL	ONC1000BL-TH	23 9/16	598	
240/208	1500/1125	ONC1500BL	ONC1500BL-TH	29 1/16	739	
240/208	2000/1875	ONC2000BL	ONC2000BL-TH	34 5/8	880	

Electric Baseboards						
ODL		High-End				8
Watts	240/208V	Product #		Product #		Length
		120V	208V	240/208V		in. mm
300	300/225	ODL0302	ODL0308	ODL0300	24 5/8	625
500	500/375	ODL0502	ODL0508	ODL0500	29 1/2	750
750	750/563	ODL0752	ODL0758	ODL0750	39 1/2	1004
1000	1000/750	ODL1002	ODL1008	ODL1000	49 13/16	1265
1250	1250/938	ODL1252	ODL1258	ODL1250	59 1/4	1506
1500	1500/1125	ODL1502	ODL1508	ODL1500	68	1727
1750	1750/1313	-	ODL1758	ODL1750	77 5/16	1964
2000	2000/1500	-	ODL2008	ODL2000	86 1/8	2187
2250	2250/1688	-	ODL2258	ODL2250	94 15/16	2412
2500	2500/1875	-	ODL2508	ODL2500	104 1/16	2644

OFM		Standard				8
Watts	240/208V	Product #		Product #		Length
		120V	208V	240/208V		in. mm
300	300/225	OFM0302	OFM0308	OFM0300	22 5/16	566
500	500/375	OFM0502	OFM0508	OFM0500	27 3/16	691
750	750/563	OFM0752	OFM0758	OFM0750	37 3/16	945
1000	1000/750	OFM1002	OFM1008	OFM1000	47 1/2	1206
1250	1250/938	OFM1252	OFM1258	OFM1250	57	1447
1500	1500/1125	OFM1502	OFM1508	OFM1500	65 11/16	1668
1750	1750/1313	-	OFM1758	OFM1750	75	1905
2000	2000/1500	-	OFM2008	OFM2000	83 13/16	2128
2250	2250/1688	-	OFM2258	OFM2250	92 5/8	2353
2500	2500/1875	-	OFM2508	OFM2500	101 13/16	2585

OPP		Patio Door				8
Watts		Product #		Product #		Length
		208V	240/208V	240/208V		in. mm
500		OPP0508	500/375	OPP0500	33 1/2	855
750		OPP0758	750/563	OPP0750	48	1219
1000		OPP1008	1000/750	OPP1000	60	1525
1250		OPP1258	1250/938	OPP1250	72	1830
1500		OPP1508	1500/1125	OPP1500	86 3/4	2204
1750		OPP1758	1750/1313	OPP1750	100	2542
2000		OPP2008	2000/1500	OPP2000	113 5/16	2879

OPPM		Mini Patio Door				8
Watts		Product #		Product #		Length
		120V	208V	240/208V	240/208V	in. mm
300		OPPM0302	OPPM0308	300/225	OPPM0300	23 5/8 600
450		OPPM0452	OPPM0458	450/338	OPPM0450	35 7/16 900
600		OPPM0602	OPPM0608	600/450	OPPM0600	47 1/4 1200
750		OPPM0752	OPPM0758	750/563	OPPM0750	59 1/16 1500
900		OPPM0902	OPPM0908	900/675	OPPM0900	70 7/8 1800
1050		OPPM1052	OPPM1058	1050/788	OPPM1050	82 11/16 2100
1200		OPPM1202	OPPM1208	1200/900	OPPM1200	94 1/2 2400
1350		OPPM1352	OPPM1358	1350/1013	OPPM1350	106 5/16 2700

Wall Radiant Cove Heater						
ORC		Radiant Cove Heater				10
Watts		Product #		Product #		Length
		120V	208V	240V		in. mm
450		ORC0452	ORC0458	ORC0450	34	864
600		ORC0602	ORC0608	ORC0600	47	1194
750		ORC0752	ORC0758	ORC0750	59	1499
900		ORC0902	ORC0908	ORC0900	71	1803
1050		ORC1052	ORC1058	ORC1050	83	2108
1200		ORC1202	ORC1208	ORC1200	94	2388
1500		ORC1502	ORC1508	ORC1500	113	2870

Bathroom Fan Heaters			
OHY Convection and Fan Heater		12	
Watts	Volts	Product #	
2000	240	OHY2000-TH ¹	

¹ BEWARE: Not available for 208V.

OVC Electronic and compact			
		12	
min. Watts	max. Watts	Volts	Product #
750/563	1500/1125	240/208	OVC1500BL-TH
750/563	1500/1125	240/208	OVC1500BL-PW ¹

¹ Requires non pulsing wall-mounted thermostat.

OVE European-Style			
		12	
Watts	Volts	Product #	
1500	120	OVE1502 ¹	
1500	120	OVE1502-T	
1500	120	OVE1502-TM	
1500/1125	240/208	OVE1500 ¹	
1500/1125	240/208	OVE1500-T	
1500/1125	240/208	OVE1500-TM	

¹ Requires non pulsing wall-mounted thermostat.

Compact Fan Heaters			
OFB Compact Wall		14	
Watts ¹	Volts	Product #	
750 1500	120	OFB1502BL	
750/563 1500/1125	240	OFB1500BL	

¹ Wattage can be selected on site (750W or 1500W).

OVRP Compact Ceiling			
		14	
Watts	Watts 240/208V	Product # 120V	Product # 240/208V
500	500/375	OVRP0502	OVRP0500
750	750/563	OVRP0752	OVRP0750
1000	1000/750	OVRP1002	OVRP1000
1250	1250/938	OVRP1252	OVRP1250
1500	1500/1125	OVRP1502	OVRP1500

OVS Residential Wall			
		14	
Watts	Watts 240/208V	Product # 120V	Product # 240/208V
500	500/375	OVS0502	OVS0500
750	750/563	OVS0752	OVS0750
1000	1000/750	OVS1002	OVS1000
1250	1250/938	OVS1252	OVS1250
1500	1500/1125	OVS1502	OVS1500
2000	2000/1500	-	OVS2008

Kickspace and Floor Insert Fan Heaters			
OCP Kickspace		16	
Watts	Volts	Product #	
500 1000	120	OCPU1002	
500/375 1000/750	240/208	OCPU1000	

OFH Floor Insert		
16		
Watts	Volts	Product #
500	120	OFH0502
1000	120	OFH1002
1500	120	OFH1502
500/375	240/208	OFH0500
1000/750	240/208	OFH1000
1500/1125	240/208	OFH1500

Patio Infrared Heater									
OCF Patio Infrared Heater									
18									
Watts	Volts	Product # ¹	Grounded 3-pronged outlet	L in.	L mm	H in.	H mm	D in.	D mm
1500	120	CF15120B	15A, 120VAC	27	685.8	6 1/2	165	6 5/16	161
3000/2250	240/208	CF30240B ²	-	38	965.2	6 1/2	165	6 5/16	161
4000/3000	240/208	CF40240B ²	-	42	1066.8	9	228.6	9	228.6
6000/4500	240/208	CF60240B ²	-	42	1066.8	9	228.6	9	228.6

¹ Mounting brackets included. Finish: "B" for black anodized aluminum.

² Indoor residential installation forbidden.

HEATING FOR GARAGES

Unit Heaters and Portable Heater

ODS Ceiling Fan Heater									
20									
Watts	Volts (ph)	Product #	Volts (ph)	Product #	cfm	Temperature Rise		Motor	
						°C	°F	HP	rpm
ODSA Surface									
2000	240 (1)	ODSA02000	240 (3)	ODSA02030 ¹	310	11	20	1/50	1550
3000	240 (1)	ODSA03000	240 (3)	ODSA03030 ¹	310	17	30	1/50	1550
4000	240 (1)	ODSA04000	240 (3)	ODSA04030 ¹	310	23	41	1/50	1550
5000	240 (1)	ODSA05000 ¹	240 (3)	ODSA05030 ¹	310	28	51	1/50	1550
2000	208 (1)	ODSA02008	208 (3)	ODSA02038 ¹	310	11	20	1/50	1550
3000	208 (1)	ODSA03008	208 (3)	ODSA03038 ¹	310	17	30	1/50	1550
4000	208 (1)	ODSA04008	208 (3)	ODSA04038 ¹	310	23	41	1/50	1550
5000	208 (1)	ODSA05008 ¹	208 (3)	ODSA05038 ¹	310	28	51	1/50	1550
ODSB Surface									
7500	240 (1)	ODSB07500 ¹	240 (3)	ODSB07530 ¹	600	22	39	1/33	1550
10000	240 (1)	ODSB10000 ¹	240 (3)	ODSB10030 ¹	600	29	53	1/33	1550
7500	208 (1)	ODSB07508 ¹	208 (3)	ODSB07538 ¹	600	22	39	1/33	1550
9900	208 (1)	ODSB09908 ¹	208 (3)	ODSB09938 ¹	600	29	53	1/33	1550
ODSR Recessed									
2000	240 (1)	ODSR02000	240 (3)	ODSR02030 ¹	310	11	20	1/50	1550
3000	240 (1)	ODSR03000	240 (3)	ODSR03030 ¹	310	17	30	1/50	1550
4000	240 (1)	ODSR04000	240 (3)	ODSR04030 ¹	310	23	41	1/50	1550
5000	240 (1)	ODSR05000 ¹	240 (3)	ODSR05030 ¹	310	28	51	1/50	1550
2000	208 (1)	ODSR02008	208 (3)	ODSR02038 ¹	310	11	20	1/50	1550
3000	208 (1)	ODSR03008	208 (3)	ODSR03038 ¹	310	17	30	1/50	1550
4000	208 (1)	ODSR04008	208 (3)	ODSR04038 ¹	310	23	41	1/50	1550
5000	208 (1)	ODSR05008 ¹	208 (3)	ODSR05038 ¹	310	28	51	1/50	1550

¹ Built-in 240V contactor.

OAE Economical Unit Heater			
20			
Watts	Volts	Product # ¹	BTU/hr
2000/1500	240/208	OAE2000AM-EO-TB6	6824/5118
3000/2250	240/208	OAE3000AM-EO-TB6	10236/7677
5000/3750	240/208	OAE5000AM-EO-TB6	17060/12795

¹ Mounting brackets included.

OCC Portable Construction Heater				
20				
Watts	Volts	Product #	Motor type	Grounded 3-pronged outlet
4800/3600	240/208	OCC4800AM-MF-TB6	Enclosed	30A. 250VAC
4800/3600	240/208	OCC4800AM-MO-TB6	Open	30A. 250VAC
4800/3600	240/208	OCC4800AMWB-MO-TB6 ¹	Open	30A, 250VAC
4800/3600	240/208	OCC4800AMRF-MO-TB6 ¹	Open	-

¹ Mounting bracket included.

HEATING CABLES - INDOOR USE

FLOOR HEATING CABLES

OTR for Membrane

22

Watts	Product # 240/208V	Product # 120V	Cable Diameter (mm)	Covered Surface Depending on Spacing ¹				Cable Length	
				3 5/8" (92 mm) ²		3 3/4" (95 mm)		ft.	m
				10W/ sq. ft.	108W/ sq. m	9.6W/sq. ft.	103W/ sq. m		
85	-	OTR0082	4.3	9.5	0.9	10.0	0.9	32	9.75
120	-	OTR0122	4.3	12.0	1.1	12.5	1.2	40	12.19
150	-	OTR0152	4.3	16.0	1.5	16.5	1.5	53	16.15
170	OTR0170	OTR0172	4.3	18.5	1.7	19.0	1.8	61	18.59
240	OTR0240	OTR0242	4.3	24.0	2.2	25.0	2.3	80	24.38
300	OTR0300	OTR0302	4.3	30.5	2.8	31.5	2.9	101	30.78
360	OTR0360	OTR0362	4.3	36.5	3.4	37.5	3.5	120	36.58
420	OTR0420	OTR0422	4.3	42.5	4.0	44.0	4.1	141	42.98
475	OTR0475	OTR0472	4.3	48.5	4.5	50.0	4.6	160	48.77
600	OTR0600	OTR0602	4.3	60.5	5.6	62.5	5.8	200	60.96
720	OTR0720	OTR0722	4.3	72.5	6.7	75.0	7.0	240	73.15
840	OTR0840	OTR0842	4.3	84.5	7.9	87.5	8.1	280	85.34
960	OTR0960	OTR0962	4.3	96.5	9.0	100.0	9.3	320	97.54
1080	OTR1080	-	4.3	109.0	10.1	112.5	10.5	360	109.73
1140	-	OTR1142	4.3	115	10.66	119	11.03	380	115.82
1200	OTR1200	-	4.3	121.0	11.2	125.0	11.6	400	121.92
1320	-	OTR1322	4.3	133	12.35	137.5	12.77	440	134.11
1440	OTR1440	-	4.3	145.0	13.5	150.0	13.9	480	146.30
1450	-	OTR1452	4.3	145	13.5	150	13.9	480	146.30
1500	-	OTR1502	4.3	151	14	156.5	14.5	500	152.40
1600	OTR1600	-	4.3	169.0	15.7	175.0	16.3	560	170.69
1680	-	OTR1682	4.3	169.5	15.7	175	16.3	560	170.69
1920	OTR1920	-	4.3	193.5	18.0	200.0	18.6	640	195.07
2280	OTR2280	-	4.3	229.5	21.3	237.5	22.1	760	231.65
2640	OTR2640	-	4.3	266.0	24.7	275.0	25.5	880	268.22
2900	OTR2900	-	4.3	292.5	27.2	302.5	28.1	968	295.04
3000	OTR3000	-	4.3	302.0	28.1	312.5	29.0	1000	304.80
3360	OTR3360	-	4.3	338.5	31.4	350	32.5	1120	341.38

OTM on Mat

22

Watts	Product # ² 240/208V	Product # ² 120V	Cable Diameter (mm)	Covered Surface ¹ Spacing 3" (76 mm)		Cable Length	
				sq. ft.	sq. m	ft. in.	m
60	-	FHM120-60	3.2	5	0.5	3' 4"	0.9
120	FHM240-120	FHM120-120	3.2	10	0.9	6' 8"	1.8
180	-	FHM120-180	3.2	15	1.4	10'	3.0
240	FHM240-240	FHM120-240	3.2	20	1.9	13' 4"	4.0
300	-	FHM120-300	3.2	25	2.4	16' 8"	4.9
360	FHM240-360	FHM120-360	3.2	30	2.8	20'	6.1
420	-	FHM120-420	3.2	35	3.3	23' 4"	7.0
480	FHM240-480	FHM120-480	3.2	40	3.8	26' 8"	7.9
540	-	FHM120-540	3.2	45	4.2	30'	9.2
600	FHM240-600	FHM120-600	3.2	50	4.7	33' 4"	10.1
720	FHM240-720	FHM120-720	3.2	60	5.6	40'	12.2
840	FHM240-840	FHM120-840	3.2	70	6.5	46' 8"	14.0
960	FHM240-960	FHM120-960	3.2	80	7.4	53' 4"	16.2
1080	FHM240-1080	-	3.2	90	8.4	60	18.3
1200	FHM240-1200	-	3.2	100	9.3	66	20.1
1440	FHM240-1440	-	3.2	120	11.2	80	24.4

¹ Does not represent the surface of the room but rather the surface covered by the floor heating system, excluding fixtures and other spaces to consider.² The color of the mesh may be different.³ Spacing with the NADCM-S membrane when the cable is installed with 3 spacing castellations.

208V = 75% of wattage at 240V.

15' (4.6 m) floor sensor and 10' (3 m) cold lead included.

OWF-R for Installation with Strapping										22
Watts	Product # Strapping included ¹ 240/208V	Product # Strapping included ¹ 120V	Cable Diameter (mm)	Covered Surface Depending on Spacing ²				Cable length	Strapping length included (ft.)	
				3" (76 mm)		4" (102 mm)				
				12W/sq. ft.	130W/sq. m	9W/sq. ft.	100W/sq. m			
85	-	OWF-R0082	4.3	8	0.7	11	1.0	32	9.75	25
120	-	OWF-R0122	4.3	10	0.9	13	1.2	40	12.19	25
150	-	OWF-R0152	4.3	13	1.2	17	1.6	53	16.15	25
170	OWF-R0170	OWF-R0172	4.3	15	1.4	20	1.9	61	18.59	25
240	OWF-R0240	OWF-R0242	4.3	20	1.9	27	2.5	80	24.38	25
300	OWF-R0300	OWF-R0302	4.3	25	2.3	33	3.1	101	30.78	25
360	OWF-R0360	OWF-R0362	4.3	30	2.8	40	3.7	120	36.58	50
420	OWF-R0420	OWF-R0422	4.3	35	3.3	47	4.3	141	42.98	50
475	OWF-R0475	OWF-R0472	4.3	40	3.7	53	5.0	160	48.76	50
600	OWF-R0600	OWF-R0602	4.3	50	4.6	67	6.2	200	60.96	50
720	OWF-R0720	OWF-R0722	4.3	60	5.6	80	7.4	240	73.15	75
840	OWF-R0840	OWF-R0842	4.3	70	6.5	93	8.7	280	85.34	75
960	OWF-R0960	OWF-R0962	4.3	80	7.4	107	9.9	320	97.54	75
1080	OWF-R1080	-	4.3	90	8.4	120	11.2	360	109.73	100
1140	-	OWF-R1142	4.3	95	8.8	127	11.7	380	115.82	100
1200	OWF-R1200	-	4.3	100	9.3	133	12.4	400	121.92	100
1320	-	OWF-R1322	4.3	110	10.2	147	13.6	440	134.11	100
1440	OWF-R1440	-	4.3	120	11.1	160	14.9	480	146.30	100
1450	-	OWF-R1452	4.3	120	11.1	160	14.8	480	146.30	100
1500	-	OWF-R1502	4.3	125	11.6	167	15.5	500	152.40	125
1600	OWF-R1600	-	4.3	140	13.0	187	17.4	560	170.69	125
1680	-	OWF-R1682	4.3	140	13.0	187	17.4	560	170.69	125
1920	OWF-R1920	-	4.3	160	14.9	213	19.8	640	195.07	125
2280	OWF-R2280	-	4.3	190	17.7	253	23.6	760	231.64	150
2640	OWF-R2640	-	4.3	220	20.4	293	27.2	880	268.22	200
2900	OWF-R2900	-	4.3	242	22.5	323	30.0	968	295.04	200
3000	OWF-R3000	-	4.3	250	23.2	333	30.9	1000	304.80	200
3360	OWF-R3360	-	4.3	280	26.0	374	34.7	1120	341.38	200

¹ Strapping included. The length of plastic strapping included is based on a square room with strapping every 24" (610 mm).

² Does not represent the surface of the room but rather the surface covered by the floor heating system, excluding fixtures and other spaces to consider.
15' (4.6 m) floor sensor and 10' (3 m) cold lead included.

HEATING CABLES FOR CONCRETE

OWC-M on Mat						24	OWC-R in Reel						24
Watts	Product # 240/208V	Covered Surface ¹		Length			Watts	Product # 240/208V	Covered Surface ¹ Spacing 6" (15 cm)		Cable Length		
		sq. ft.	sq. m	ft. in.	m				sq. ft.	sq. m	ft.	m	
150	OWC-M0150	14.0	1.3	6' 5"	1.9		300	OWC-R0300	28.0	2.6	56	17.07	
200	OWC-M0200	19.0	1.7	8' 4"	2.5		500	OWC-R0500	46.5	4.3	93	28.35	
300	OWC-M0300	28.0	2.6	12' 6"	3.8		700	OWC-R0700	62.5	5.8	125	38.10	
400	OWC-M0400	38.0	3.5	16' 8"	5.1		950	OWC-R0950	88.0	8.2	176	53.64	
500	OWC-M0500	46.5	4.3	20' 10"	6.4		1300	OWC-R1300	125.0	11.6	250	76.20	
600	OWC-M0600	56.0	5.2	25'	7.6		1700	OWC-R1700	156.0	14.5	312	95.10	
700	OWC-M0700	65.5	6.1	29' 2"	8.9		2000	OWC-R2000	187.0	17.4	374	114.00	
850	OWC-M0850	80.0	7.4	35' 5"	10.8		2400	OWC-R2400	218.5	20.3	437	133.20	
950	OWC-M0950	89.0	8.3	39' 7"	12.1		3000	OWC-R3000	279.5	26.0	559	170.38	
1100	OWC-M1100	103.0	9.6	45' 10"	14.0		3400	OWC-R3400	312.5	29.03	625	190.50	
1200	OWC-M1200	113.0	10.5	50'	15.2		3700	OWC-R3700 ²	341.0	31.7	682	207.87	
1300	OWC-M1300	121.5	11.3	54' 2"	16.5		4000	OWC-R4000 ²	372.5	34.6	745	227.08	
1400	OWC-M-1400	130.5	12.1	58' 4"	17.8								
1500	OWC-M1500	140.5	13.1	62' 6"	19.1								
1600	OWC-M1600	149.5	13.9	66' 8"	20.3								
1700	OWC-M1700	159.0	14.8	70' 10"	21.6								
1850	OWC-M1850	172.5	16.0	77' 1"	23.5								
2000	OWC-M2000	187.5	17.4	83' 4"	25.4								
2200	OWC-M2200	206.0	19.1	91' 6"	27.9								
2400	OWC-M2400	225.0	20.9	100'	30.5								
2550	OWC-M2550	239.0	22.2	106' 6"	32.5								
2700	OWC-M2700	253.0	23.5	112' 6"	34.3								
2850	OWC-M2850	267.0	24.8	119'	36.3								
3000	OWC-M3000	281.0	26.1	125'	38.1								
3200	OWC-M3200	300.0	27.9	133' 6"	40.7								
3400	OWC-M3400	318.5	29.6	141' 8"	43.2								
3600	OWC-M3600	336.0	31.2	150'	45.7								
3700	-	346.5	32.2	154' 2"	47.0								
4000	-	375.0	34.8	166' 8"	50.8								

¹ Does not represent the room surface but rather the area covered by the cable mat including 3" (7.5 cm) spacing between the mat strips but excluding fixed elements to be bypassed and any other required clearances.
208V = 75% of wattage at 240V.

¹ Does not represent the room surface but rather the area covered by the cable while leaving a 6" (15 cm) spacing between cables and excluding fixed elements to be bypassed and any other clearance required.

² Not compatible with a floor heating thermostat rated for 15A and less. Requires relay with low voltage thermostat.

208V = 75% of wattage at 240V.

HEATING CABLE - OUTDOOR USE								
HEATING CABLE FOR SNOW MELTING								
OWS-T	on Mat							26
Watts	Product #		Covered Surface ¹		Mat Length		Cable Length ²	
	208V	240V	sq. ft.	sq. m	ft.	m	ft.	m
OWS-T 24 in. (610 mm) Wide Models								
500	OWS-T0508-24	OWS-T0500-24	11.0	1.0	5	1.5	43	13.1
1000	OWS-T1008-24	OWS-T1000-24	22.0	2.0	10	3.0	86	26.2
1500	OWS-T1508-24	OWS-T1500-24	32.5	3.0	15	4.6	128	39.0
2000	OWS-T2008-24	OWS-T2000-24	43.5	4.0	20	6.1	171	52.1
2500	OWS-T2508-24	OWS-T2500-24	54.0	5.0	25	7.6	214	65.2
3000	OWS-T3008-24	OWS-T3000-24	65.0	6.0	30	9.1	257	78.4
4000	OWS-T4008-24	OWS-T4000-24	86.5	8.1	40	12.2	342	104.3
5000	OWS-T5008-24	OWS-T5000-24	108.5	10.1	50	15.2	428	130.5
6000	-	OWS-T6000-24	130.0	12.1	60	18.3	513	156.4
OWS-T 36 in. (914 mm) Wide Models								
450	OWS-T0458-36	OWS-T0450-36	9.5	0.9	3	0.9	38	11.6
750	OWS-T0758-36	OWS-T0750-36	16.0	1.5	5	1.5	63	19.2
1050	OWS-T1058-36	OWS-T1050-36	22.0	2.0	7	2.1	88	26.8
1500	OWS-T1508-36	OWS-T1500-36	31.5	2.9	10	3.0	126	38.4
2250	-	-	45.0	4.2	15	4.6	188	57.3
3000	OWS-T3008-36	OWS-T3000-36	63.5	5.9	20	6.1	251	76.5
4500	OWS-T4508-36	OWS-T4500-36	95.0	8.8	30	9.1	377	114.9
6000	-	OWS-T6000-36	126.5	11.8	40	12.2	502	153.0
¹ Represents the area covered by the mat including 2" (51 mm) spacing between the mat strips but excluding fixed elements to be bypassed and any other required clearances.								
² Represents the total length of the heating cable if it is detached from the flexible strips.								
208V = 75% of wattage at 240V.								

SELF-REGULATING HEATING CABLES

OSR-NA	All Purpose						28
Nominal Output W/ft.	Product # ^{1,3} 120V	Nominal Output W/ft.	Product # ^{1,2,3} 240V	Outer jacket/ Mechanical shield			Cable dimension approx. (mm)
				AO	BO	BOT	
				3	ELSR-NA-3-1-XX	4	
5	ELSR-NA-5-1-XX	6	ELSR-NA-6-2-XX	✓	✓	✓	13.8 x 5.6
7	ELSR-NA-7-1-XX	8	ELSR-NA-8-2-XX	✓	✓	✓	14.1 x 5.6
-	-	10	ELSR-NA-10-2-XX	✓	✓	✓	14.1 x 5.6

¹ XX = Outer jacket/Mechanical shield.

AO Aluminum foil and a thermoplastic outer jacket.

BO Protective braid and a thermoplastic outer jacket.

BOT Protective braid and a fluoropolymer outer jacket.

² For operations at 208V, please consult Correction Factors/Multipliers at next page.

³ When ordering, the quantity on the purchase order is equal to the length in feet of the cable required.

E.g.: To order a 500 ft., cable, write 500 for quantity with product code.

OSR-PI	120V Preassembled						28
Product #	Length		Nominal power output in air condition at 5 °C (40 °F) ¹				
	ft.	m					
ECK-7AO-006	6	1.8	42				
ECK-7AO-012	12	3.6	84				
ECK-7AO-018	18	5.5	126				
ECK-7AO-025	25	7.6	175				
ECK-7AO-050	50	15.2	350				
ECK-7AO-075	75	22.9	525				
ECK-7AO-100	100	30.5	700				

¹ Because of the cable's self-regulating properties, the power density can reach up to 11 Watts per foot when buried in snow or ice: "wet density". In this situation, use of a 15 Amp. circuit breaker is valid for all models.

OSR-MA-BF	Potable Water				28
Nominal Output W/ft.	Product #		Outer jacket/ Mechanical shield	Cable dimension approx. (mm)	
	120V ^{1,3}	240V ^{1,2,3}	BF		
3	ELSR-MA-3-1-XX	ELSR-MA-3-2-XX	✓	7.7 x 6.4	
5	ELSR-MA-5-1-XX	ELSR-MA-5-2-XX	-	8.1 x 5.8	

¹ XX = Outer jacket/Mechanical shield.
BF Protective braid, suitable for use in potable water (certified according to NSF/ANSI 61).

² For operations at 208V, please consult Correction Factors/Multipliers at next page.

³ When ordering, the quantity on the purchase order is equal to the length in feet of the cable required.
E.g.: To order a 500 ft., cable, write 500 for quantity with product code.

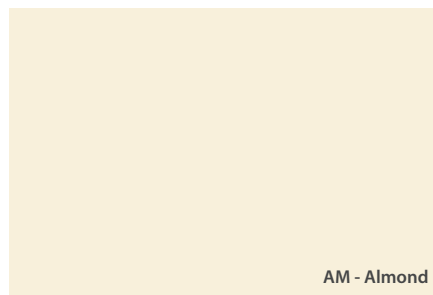
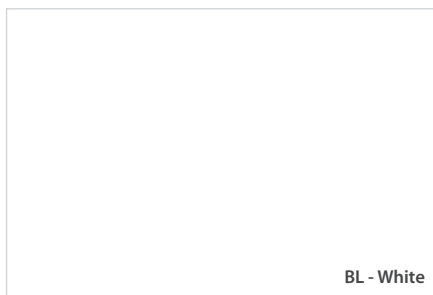
Custom Cut¹

Product #	Description
OSR-CUT	Cutting fee for all lengths other than 500 ft. and 1000 ft. (25 ft. minimum)

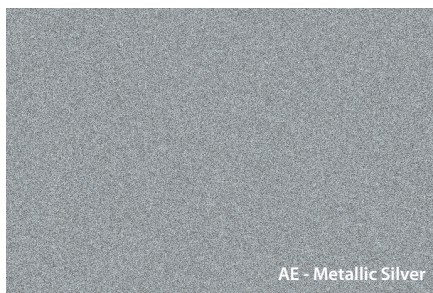
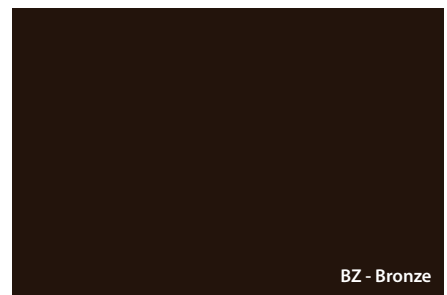
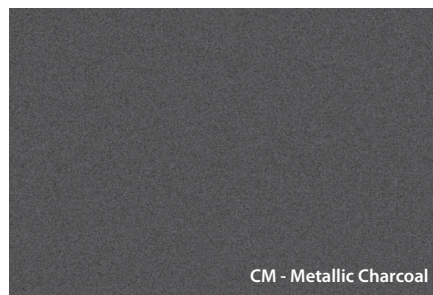
¹ Custom cutting service available with cutting fee (OSR-CUT) for all lengths other than 500 ft. and 1000 ft. (minimum of 25 ft.).
E.g.: To order a 75 ft., cable, write 75 for quantity with product code and add the product code OSR-CUT on another line.



Standard Colors¹



Optional Colors²



¹ White gloss may vary according to product Series.

² Upcharge applicable for the optional colors for the series of product for which they are offered.

Note: Due to the printing process, the colors may vary from the actual colors.

