

# MUNBYN

## MUNBYN

More Choice  
For Your Growing Business

Version: 2.1.1

## Logistics Label Printer

# USER GUIDE



☐ White ☐ Gray ☐ Green ☐ Pink

# Contents

<b>01 Product Introduction</b>	<b>01</b>
1.1 What's in the package?	01
1.2 Printer features	02
<b>02 Set Up The Printer</b>	<b>03</b>
2.1 Quick printer connection	03
2.2 Label setup	04
2.3 Driver Installation	05
2.3.1 Windows Driver Installation	05
2.3.2 Mac Driver Installation	06
2.3.3 Ubuntu Driver Installation	06
2.4 Bluetooth connection	07
2.4.1 Connect to App via Bluetooth	07
<b>03 Pro Tips</b>	<b>08</b>
<b>04 FAQ</b>	<b>09</b>
<b>05 LED Status</b>	<b>09</b>
<b>06 Feeder Button Instruction</b>	<b>10</b>
<b>07 Specifications</b>	<b>11</b>
<b>08 Safety Notices</b>	<b>12</b>
<b>09 Tech Support</b>	<b>13</b>
<b>10 FCC Statement</b>	<b>14</b>

## 01 Product Introduction

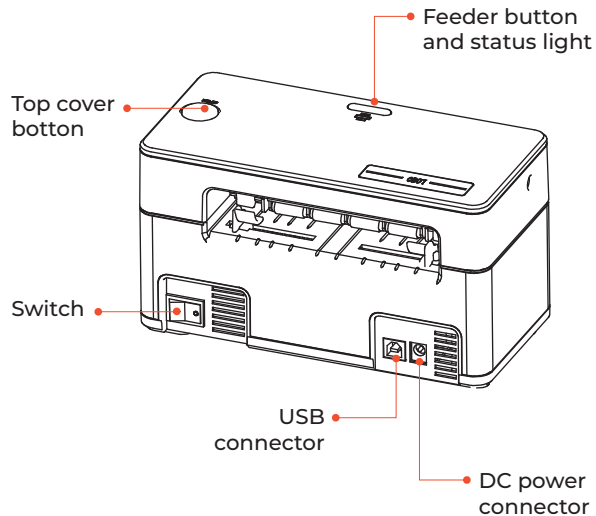
### 1.1 What's in the package?



- |                      |                     |                  |
|----------------------|---------------------|------------------|
| <b>A</b> Printer     | <b>B</b> USB Cable  | <b>C</b> Adapter |
| <b>D</b> Power Cord  | <b>E</b> Quick Tips | <b>F</b> Labels  |
| <b>G</b> User Manual |                     |                  |

- If contents are missing or damaged, please contact us.
- Type-C cable and USB flash drive are not included in regular accessories of ITPP941B.

## | 1.2 Printer Overview

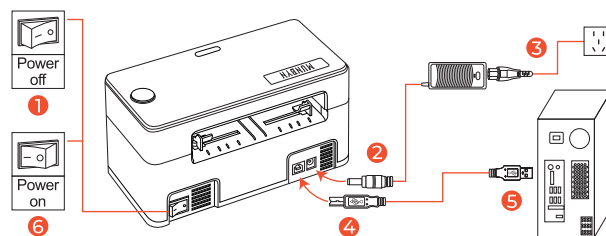


## 02 Set Up The Printer

**Recommended:**

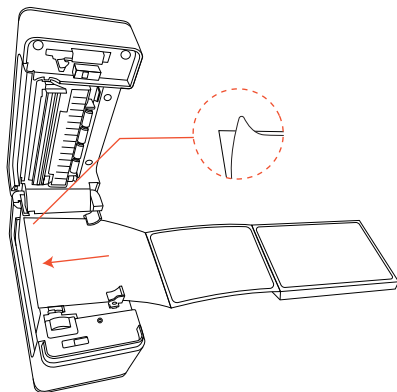
**Watch the short setup video at:**  
[www.munbyn.biz/unboxing](http://www.munbyn.biz/unboxing)

## | 2.1 Quick printer connection



- Please follow the sequence of the above picture to operate.

## 2.2 Label setup



### Automatic label identification:

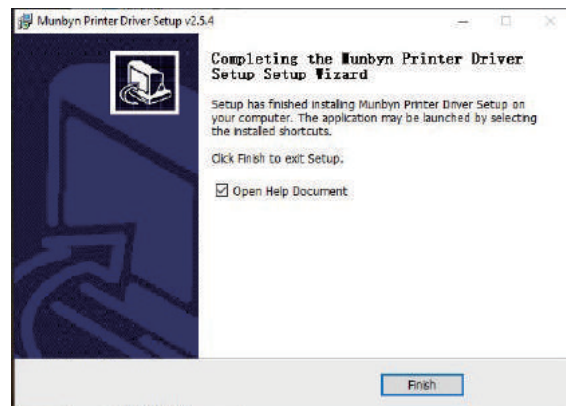
- Load no less than 4 consecutive labels into the printer.
- After the paper is stable, press and hold feeder button, until you hear a beep.
- Then, the printer will automatically label identification.

## 2.3 Driver Installation

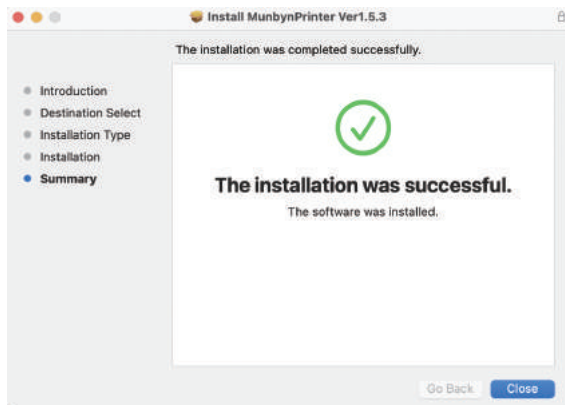
**For the latest driver, please visit:**  
**[www.munbyn.biz/941d](http://www.munbyn.biz/941d)**

- Please run the downloaded software from the web address indicated above and follow the prompts to complete installation.

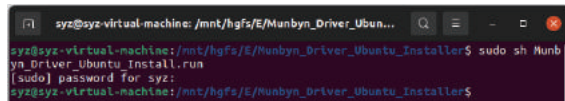
### 2.3.1 Windows Driver Installation



## 2.3.2 Mac Driver Installation



## 2.3.3 Ubuntu Driver Installation



## 2.4 Bluetooth connection

(Only for Bluetooth version)

### 2.4.1 Connect to the App via Bluetooth

1. Search "**Munbyn Print**" on App Store or Google Play to get the App



Google Play



App Store



Initial Setup

2. Open the "**Munbyn Print**" and connect to the printer.
3. If your mobile needs a PIN password, please enter "0000".

### Note:

- Due to the mobile phone system requirements, the app needs to access your location services information, you'll get a notification requesting permission. You need to enable GPS and confirm authorization (Android only).

## 03 Pro Tips

- **Anytime you change your label**, run the automatic label identification.
- Press the feeder button on the printer to **skip a blank label**.
- **To run a self-test**, press and hold the feeder button until you hear two short beeps.
- **Avoid poor quality labels** as they can damage the printer.
- Regularly **clean the printer head**.
- **If the paper is jammed and the red light flashes**, run Automatic label identification.
- Insert Munbyn into the **same USB port** on your computer every time. This will avoid creating duplicate copies of the printer in your operating system.

## 04 FAQ

**FAQ file, please visit:**

[www.munbyn.biz/941bfaq](http://www.munbyn.biz/941bfaq)

## 05 LED Status

Light	Description	Troubleshoot
Green	Normal operation	/
Flashing Red (every 2 seconds)	Label paper is not identified	Run automatic label identification
Flashing Red (every 1 second)	Cover is not closed	Check that the cover is completely closed
Flashing Green and Red	Printer head is overheated	Printer will automatically resume once the printer head has cooled down

## 06 Feeder Button Instruction

Printer status	Feeder button	Function
Printing	Press the button	Pause printing
Standby	Press and hold on until you hear one beep	Automatic label identification
Self-test	Press and hold on until you hear two beeps	Print self-test page
Standby	Press and hold on until you hear five beeps	Reset Printer

## 07 Specification

Method	Direct Thermal
Resolution	203 dpi; 300 dpi
Max Printing Speed	150 mm/s
Paper Width	40-110 mm (1.57-4.3 inches)
Paper Thickness	0.06-0.25 mm
Power Adapter	24V / 2A
Printing Life	TPH 100Km
Operating Environment	Temperature: -10 to 50 °C Humidity: 10-90% (non condensing)
Storage Environment	Temperature: -40 to 80 °C Humidity: 5-95% (non condensing)
Connection	USB ; Bluetooth (Only for Bluetooth version)
Weight	1.90 lbs / 0.9kg
Dimensions	D198 mm * W 96mm * H 109 mm

## 08 Safety Notices

- The printer head can become very hot after printing labels. Do not touch the printer head.
- Do not bend the power cord excessively or place objects on the cord.
- Do not use the printer if you find any irregularities as these could result in fire or electrocution.
- Keep the printer out of reach of children.
- Use only approved accessories and do not try to disassemble, repair the unit by yourself.
- Keep the printer away from water and other objects that could penetrate the components.
- Please unplug the printer when it is not in use for long periods.
- If you have problems connecting to the printer with the Munbyn Print App, you can try to restart the App or reinstall the App. If your problem is still not resolved, please contact us.

## 09 Tech Support

E-mail: [support@munbyn.com](mailto:support@munbyn.com)

Whatsapp: +8617817881067

Phone: +1 650 206 2250

Skype: munbyn

Support time:

Monday to Friday 24 hours.



MUNBYN provides 24 months warranty and lifetime free service.

If you encounter any issues with the product, please contact the MUNBYN team to promptly receive troubleshooting tips or a replacement.

Website: [www.munbyn.com](http://www.munbyn.com)  
(how-to videos, warranty details)



## 10 FCC Statement

Changes or modifications not expressly approved by the party responsible for compliance could void the user's authority to operate the equipment.

This equipment has been tested and found to comply with the limits for a Class B digital device, pursuant to Part 15 of the FCC Rules. These limits are designed to provide reasonable protection against harmful interference in a residential installation. This equipment generates uses and can radiate radio frequency energy and, if not installed and used in accordance with the instructions, may cause harmful interference to radio communications. However, there is no guarantee that interference will not occur in a particular installation. If this equipment does cause harmful interference to radio or television reception, which can be determined by turning the equipment off and on, the user is encouraged to try to correct the interference by one or more of the following measures:

- Reorient or relocate the receiving antenna.
- Increase the separation between the equipment and receiver.
- Connect the equipment into an outlet on a circuit different from that to which the receiver is connected.

-- Consult the dealer or an experienced radio/TV technician for help.

This device complies with part 15 of the FCC rules. Operation is subject to the following two conditions (1) this device may not cause harmful interference, and (2) this device must accept any interference received, including interference that may cause undesired operation.

This equipment complies with FCC radiation exposure limits set forth for an uncontrolled environment.



**MUNBYN**

More Choice  
For Your Growing Business