

Douk Audio TONE

— Bluetooth Digital Power Amplifier —

NOTICE

- AUX and USB mode only can be switched and chosen when there are AUX and USB audio source input.
- Headphone output and USB input are with priority.
- Please connect Tone to the power supply firstly and then plug into the socket, otherwise there will be some sparks but still safe and no harm to TONE.
- Default with 19V/3.42A power supply, if you want higher output power you can prepare another 24V high-quality $\ominus 5.5\text{mm}$ / $\oplus 2.1\text{-}2.5\text{mm}$ power supply by yourself.

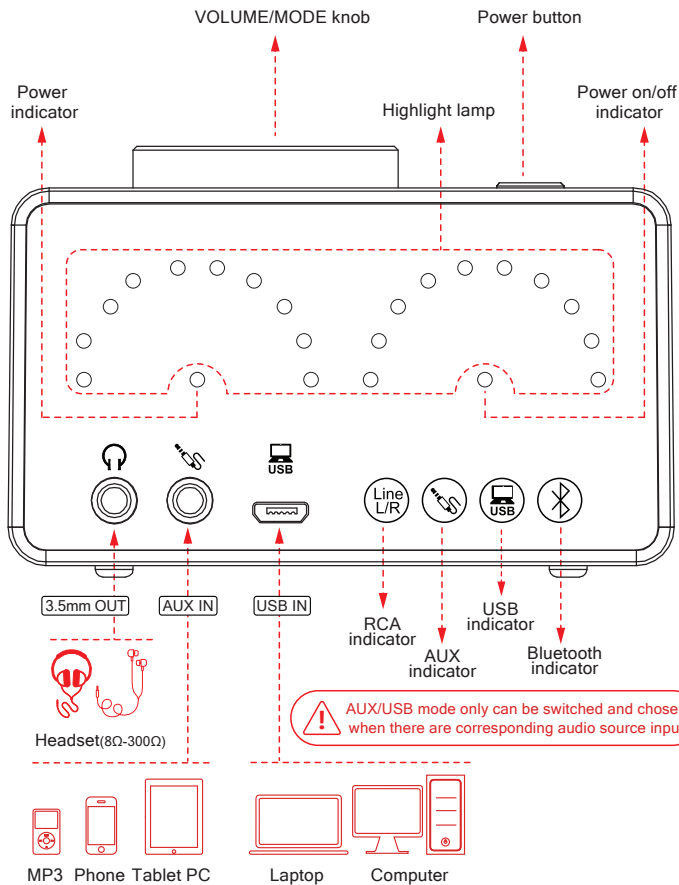
FEATURES

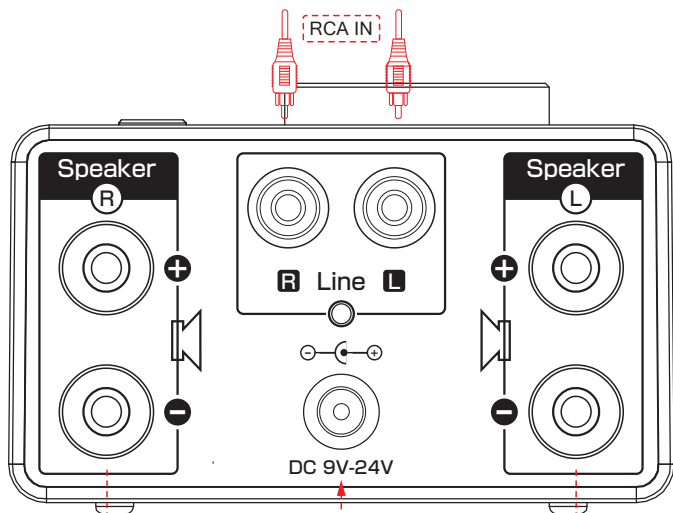
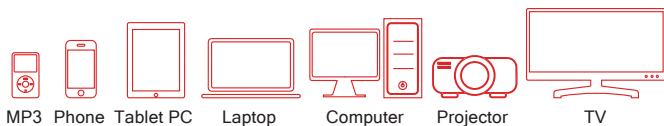
1. Supporting RCA/AUX/USB/Bluetooth inputs and speaker/headphone outputs to meet all kinds of home audio system device.
2. Bluetooth 5.0 compatible with various Bluetooth devices, also can as USB sound card, supporting computers (no driver is required) and phones (with OTG function) input.
3. Hi-Fi clear sound, no audible noise even at large power output.
4. Strong power can up to 50W*2, easily can drive most home speakers.
5. Unique dual LED display on the mirror panel, show the volume clearly and make the music more dynamically.
6. Mini size and attractive appearance suits home and desktop use.

HOW TO USE

1. Connect TONE to the power supply and then plug into the socket, the left red LED in the front panel will be on.
2. Wired input:
 - According to audio source and load, connecting proper audio input (USB / RCA / AUX) and output (speaker / headphone) cable.
 - Long press the power button for 2S to turn it on and the right LED will be on.
 - Short press the VOLUME/MODE to select right audio input mode.
3. Wireless input:
 - Connecting TONE output to the speaker or headphone.
 - Long press the power button for 2S to turn it on and the right LED will be on.
 - Short press the VOLUME/MODE knob to Bluetooth mode when Bluetooth icon LED flashes.
 - Search Bluetooth named Douk Audio TONE on your audio device, after successful connection, the Bluetooth LED will be always-on.
4. Then you can adjust the volume by rotating VOLUME knob, and pause / play the music by short pressing the power button.

There is a protection film on the front panel, you can tear it.





Right Channel speaker
(4-8Ω)

DC IN

Default equipped with 19V/3.42A power supply, if you want higher output please prepare larger power supply by yourself.

Left Channel speaker
(4-8Ω)

KNOB AND BUTTON

1. Power button:

- Long press for 2S to power on / off
- Short press to play / pause

2. VOLUME/MODE knob:

- Rotating clockwise / anti-clockwise to turn up/ down the volume (when it reaches the max / min volume, the right red LED will flash)
- Short press to select audio input mode (USB,AUX, RCA, Bluetooth).



PARAMETERS

- Bluetooth: 5.0 Version, 10-20M distance
- Audio Inputs: RCA, 3.5mm AUX, Bluetooth and USB.
- Audio Outputs: Banana Speaker Jacks and 3.5mm headphone
- Output Power: 50W*2 (24V/4Ω load)
- Speaker Impedance: 4Ω-8Ω
- Headphone Impedance: 8Ω-300Ω
- Frequency Response: 20Hz-20KHz(±1dB)
- SNR: ≥98dB
- Power Supply: DC9V-24V (with reverse polarity protection)
- Dimensions: 88*70*52mm / 3.46*2.76*2.05 in
- Net Weight: 0.2KG / 0.44lb
- Package Weight: 0.75KG / 1.65lb

CONTACT INFORMATION

Address: Room 1329, Wang Cheng Building, Long Guan street, Long Hua new District, Shenzhen, Guang Dong, China

Contact: LIU CHENXI

Tel: +86-18570015672

Email: nobsound@doukaudio.com