



SOLERA<sup>®</sup> 3000WS SERIES  
AWNING (WIND SENSOR)  
OWNER'S MANUAL

# TABLE OF CONTENTS

<b>Introduction</b>	<b>2</b>
<b>Safety</b>	<b>3</b>
<b>Syncing the Bluetooth® Wind Sensor to the One Control App</b>	<b>4</b>
Preparation - Initial Pairing of the Wind Sensor to the OneControl App	4
<b>Operation</b>	<b>6</b>
Extending and Retracting the Awning Using the OneControl App	7
Settings for Automatic Retraction Due to Wind Events	7
Extending the Awning with the Power Button Switch	8
Retracting the Awning with the Power Button Switch	8
Adjusting Pitch - All Solera Awnings	9
<b>Troubleshooting</b>	<b>10</b>
Manual Override	10
Troubleshooting Adjusting Pitch - All Solera Awnings	11
<b>Maintenance</b>	<b>11</b>
Resources Required	11
Fabric Care	11
<b>Wiring Diagram</b>	<b>12</b>
<b>Notes</b>	<b>13</b>

## Introduction

The Solera® Power Awning features an internal motor to steadily operate the awning. Additionally, the pitch arm assembly allows for rain dump and adjustable pitch features. The pitch arm assembly also provides added stability. The Solera Power Awning has been upgraded to include a wind sensor in the drive side arm that pairs with the Lippert Unity board which can be controlled on the One Control app.

Additional information about this product can be obtained from [lci1.com/support](https://support.lci1.com/support) or by downloading the free LippertNOW app. The app is available on Apple App Store® for iPhone® and iPad® and also on Google Play™ for Android™ users.

Apple App Store®, iPhone®, and iPad® are registered trademarks of Apple Inc.

Google Play™ and Android™ are trademarks of Google Inc.

For information on the assembly or individual components of this product, please visit:

<https://support.lci1.com/solera 3000-series-awning>

**NOTE:** Images used in this document are for reference only when assembling, installing and/or operating this product. Actual appearance of provided and/or purchased parts and assemblies may differ.

**NOTE:** This manual will refer to the “drive side” and “idler side” throughout for various instructions. The “drive side” is the right hand side of the awning when facing the awning from the exterior of the unit. The “idler side” is the left hand side of the awning when facing the awning from the exterior of the unit.

## Safety

Read and understand all instructions before installing or operating this product. Adhere to all safety labels.

This manual provides general instructions. Many variables can change the circumstances of the instructions, i.e., the degree of difficulty, operation and ability of the individual performing the instructions.

This manual cannot begin to plot out instructions for every possibility, but provides the general instructions, as necessary, for effectively interfacing with the device, product or system. Failure to correctly follow the provided instructions may result in death, serious personal injury, severe product and/or property damage, including voiding of the Lippert limited warranty.

### **WARNING**

**The "WARNING" symbol above is a sign that a procedure has a safety risk involved and may cause death or serious personal injury if not performed safely and within the parameters set forth in this manual.**

### **WARNING**

**Failure to follow instructions provided in this manual may result in death, serious personal injury and/or severe product and property damage, including voiding of the component warranty.**

### **CAUTION**

**The "CAUTION" symbol above is a sign that a safety risk is involved and may cause personal injury and/or product or property damage if not safely adhered to and within the parameters set forth in this manual.**

### **CAUTION**

**This manual provides operational procedures for Solera Power Awning. Operating the Solera Power Awning in any other manner than described may result in personal injury, damage to the unit or the awning assembly as well as voiding the Lippert Components Limited Warranty.**

### **CAUTION**

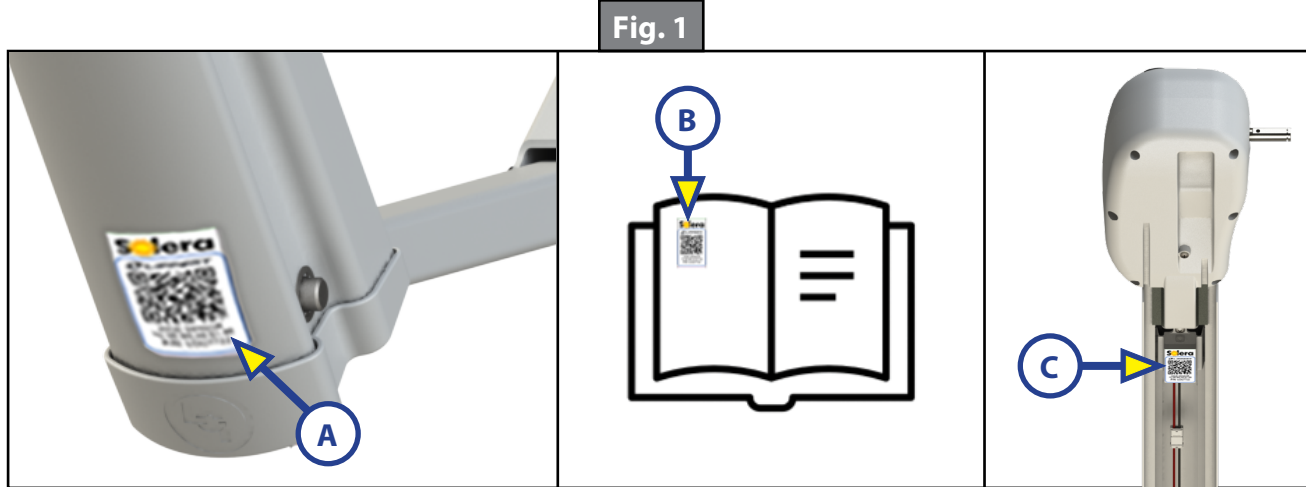
**Always wear eye protection when performing service, maintenance or installation procedures. Other safety equipment to consider would be hearing protection, gloves and possibly a full face shield, depending on the nature of the task.**

### **CAUTION**

**Moving parts can pinch, crush, or cut. Keep clear and use caution.**

## Syncing the Bluetooth® Wind Sensor to the One Control App

Located on the outside of the drive side arm will be a QR label (Fig. 1A). The QR label is also located inside the owner's manual (Fig. 1B), or on the wind sensor (Fig. 1C) located on the inside of the drive side arm should the front of the arm sticker wear off or the manual is lost. Scan the QR code when ready to pair to the OneControl application.



### **⚠ WARNING**

**When on, the automatic retraction due to wind feature will operate without any other inputs. If people are between the awning arm and the frame, they will be injured. The awning will sound an audible chime before starting a wind-triggered auto-retraction and continue to time as it retracts. This is intended to draw attention of people who may be between the awning arm to give them time to get clear. When the automatic retraction due to wind feature is on, never hang objects from your awning. When the awning retracts, those objects and your awning will be damaged.**

## Preparation - Initial Pairing of the Wind Sensor to the OneControl App

The wind sensor **MUST** be activated by the OneControl application in order for the wind sensor to operate.

### **Resources Required**

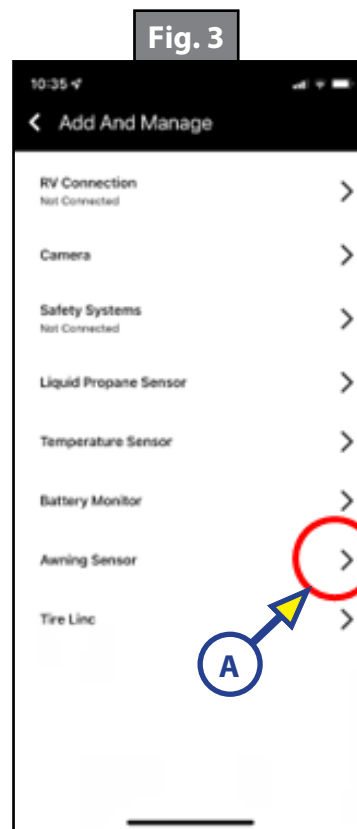
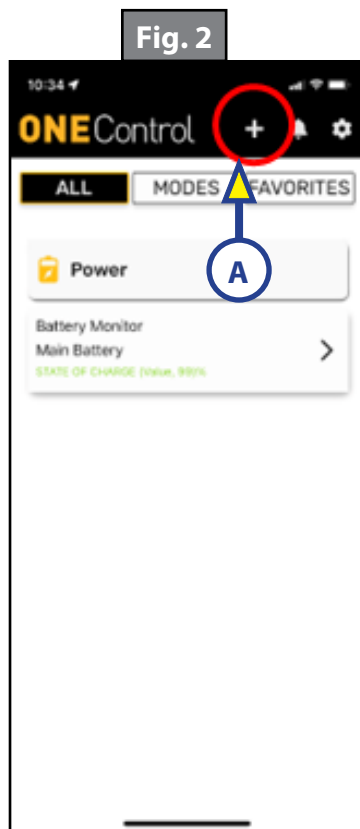
- Android, iOS smart device
- Internet connection

1. To get started, if you have not already downloaded the Lippert OneControl App to control your Bluetooth® unit devices, scan the QR code below for your smart device.



2. Open the app and either register or log in.

3. From the Main Menu, tap the + icon (Fig. 2A) in the upper right corner.
4. Select Awning Sensor (Fig. 3A) from the list of devices to add or manage.

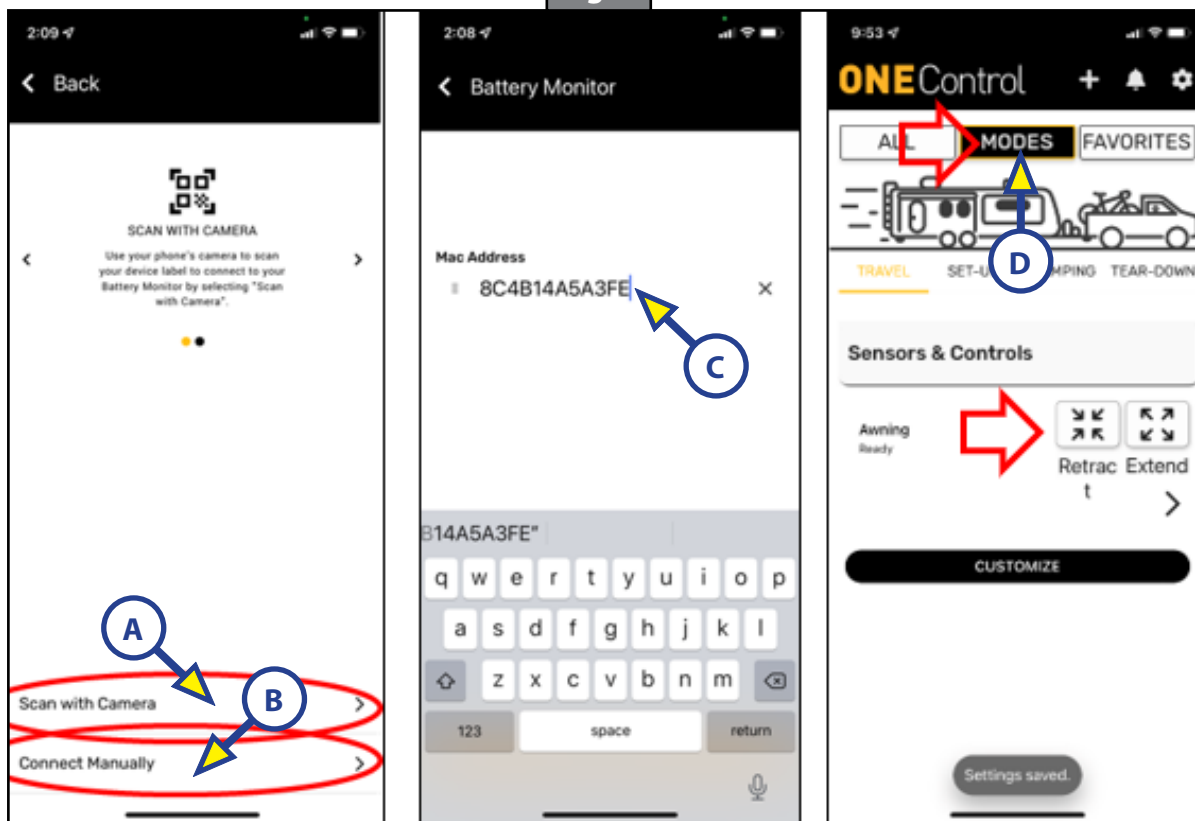


5. There are two ways to connect. You can either scan the QR code on the label (Fig. 4A), which is located on the front of the drive side of the awning arm, the label in your owner's manual or the label on the actual wind sensor inside the awning arm or enter the 12 digit MAC address (Fig. 4B) on the label manually.



6. Tap either Scan with Camera (Fig. 5A), or Connect Manually (Fig. 5B). Either scan the QR code or type in the MAC Address (Fig. 5C). The awning will now appear in the OneControl menu. It may be visible under Modes (Fig. 5D).

Fig. 5



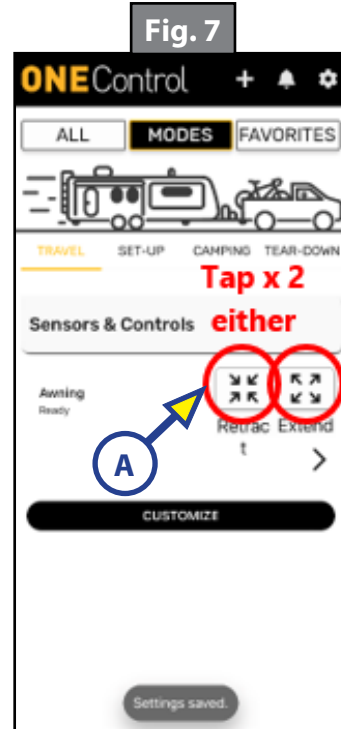
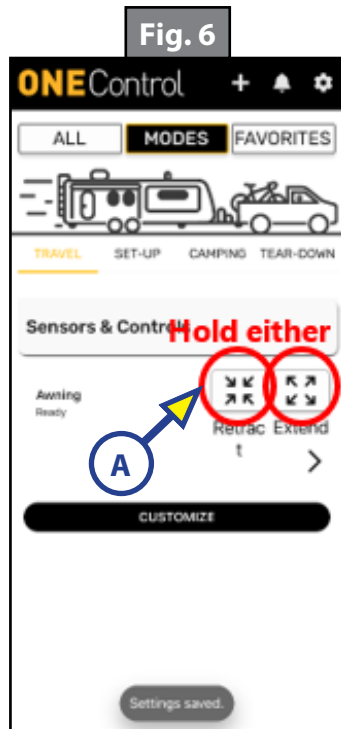
## Operation

### ⚠ WARNING

When extending your awning, be sure to give the awning appropriate clearance. Trees, branches, nearby units, and other obstructions will damage your awning. The awning arms and frame are a pinch-point. Be sure the awning mechanism is clear of people before retracting. Otherwise, harm will result. Make sure the awning is free from obstructions and not tied-down before retracting. Obstructions and objects will be damaged and will damage the awning.

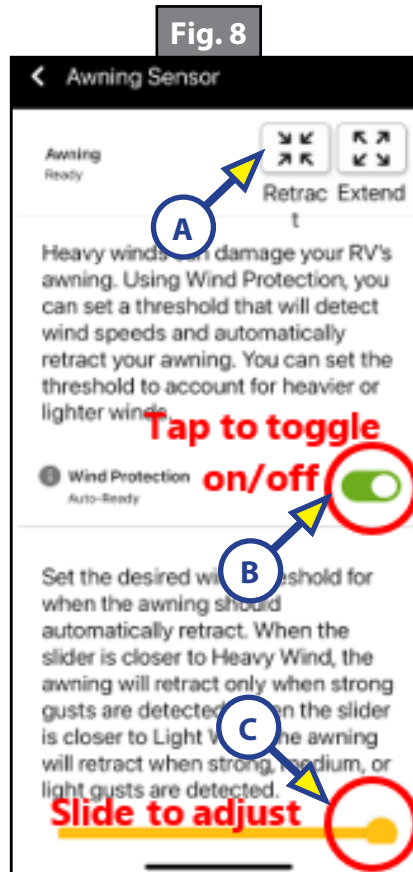
## Extending and Retracting the Awning Using the OneControl App.

- A. To extend or retract the awning, press and hold the Extend or Retract buttons on the home screen (Fig. 6A).
- B. To automatically fully extend or fully retract the awning, double tap the appropriate icon on the home screen (Fig. 7A).



## Settings for Automatic Retraction Due to Wind Events

To set a wind sensitivity level, tap the arrow (Fig. 8A) in the Awning Sensor cell on the home screen and use the slider (Fig. 8C) to adjust the wind sensitivity level, or to toggle the automatic retraction due to wind events on or off (Fig. 8B).



## Extending the Awning with the Power Button Switch

**NOTE:** Some units may not use the Lippert switch (Fig. 9).

1. Verify the unit battery is fully charged and connected to the electrical system.

**NOTE:** If the unit is equipped with a locking latch, be sure to unlock the latch prior to extending the awning.

2. Press and hold EXTEND (Fig. 9A) until the awning is extended completely.

**NOTE:** Extension is considered complete when the fabric is completely unrolled, the valance seam is visible and a section of the roll tube is exposed (Fig. 10).

**NOTE:** The awning fabric should always be above the roll tube. However, if the extend switch is engaged too long or extend is hit inadvertently instead of retract, the awning will roll up backward. This is not a defect. To correct the fabric orientation, press the RETRACT button. The awning will then extend to its correct orientation and normal operation can resume.

### ⚠ CAUTION

**Tying down the roll tube once the awning is extended will not allow the free-floating support arms and the wind sensor to work as designed and may cause damage to the awning or Unit.**

Fig. 9

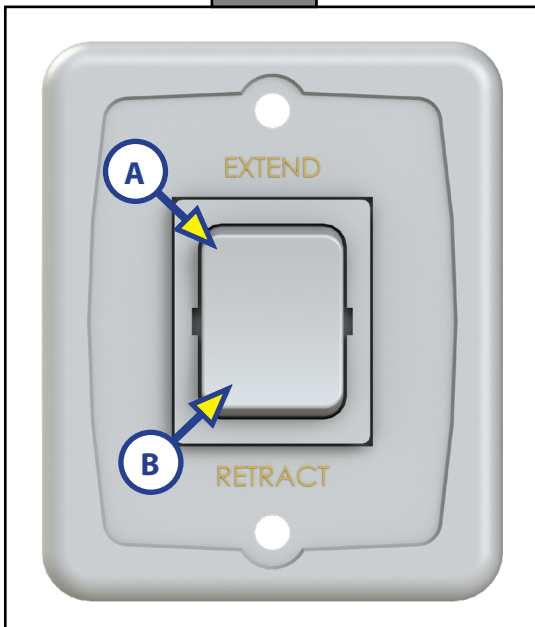
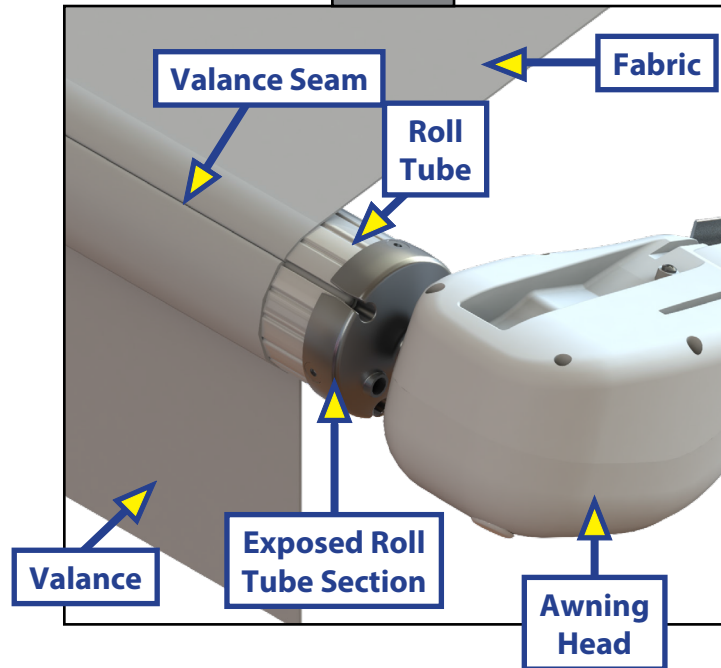


Fig. 10



## Retracting the Awning with the Power Button Switch

**NOTE:** Some units may not use the Lippert switch (Fig. 9).

1. Verify the unit's battery is fully charged and connected to the electrical system.

**NOTE:** The awning can be retracted without resetting the pitch.

2. Press and hold RETRACT (Fig. 9B) until the awning is retracted completely.

### ⚠ WARNING

**Warning Chime - If the awning is paired to the OneControl app, during the automatic closure due to a wind event, a warning chime will sound. This is intended to warn users to stand clear as the awning retracts.**

**NOTE:** The awning may automatically retract if the wind sensor is activated.

**NOTE:** If the unit is equipped with a locking latch, be sure to engage the latch after retracting the awning.

## ⚠ CAUTION

During incidents of high wind, heavy rain or extended time away from the unit, it is advisable to retract the awning completely to prevent damage to the awning and the unit.

### Adjusting Pitch - All Solera Awnings

**NOTE:** The awning will pitch itself to purge the pooling of excess water and may dump a significant amount of water without notice.

1. Pitch can be set by adjusting the articulating arm to tip one side of the awning to allow water runoff.
2. Extend the awning to desired position.
3. Choose the side of the awning for optimum shade or convenient water runoff. Pull downward on the joint of the pitch arm until desired pitch is set (Fig. 11). Belleville washers and bolt (Fig. 12A) allow for the joint to remain in the position set by the operator.

**NOTE:** Do not push the joints of the articulating arms up past a straight line (Fig. 13A). This will put tension on the gas strut, which can cause the strut to break.

**NOTE:** The awning can be retracted without resetting the pitch.

Fig. 11

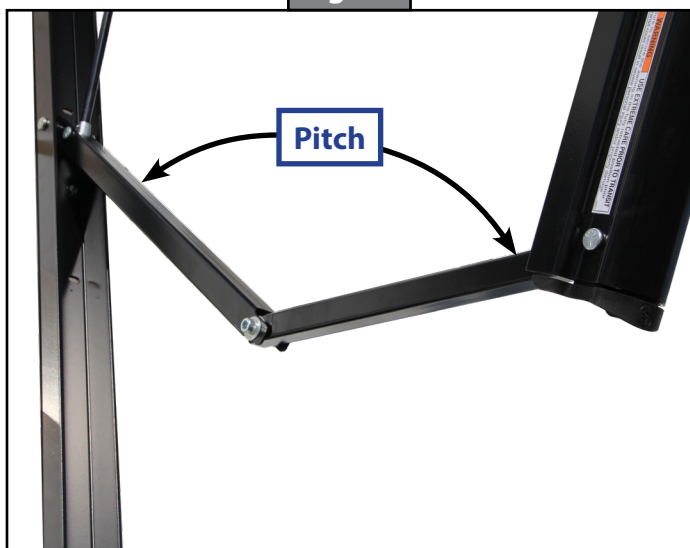
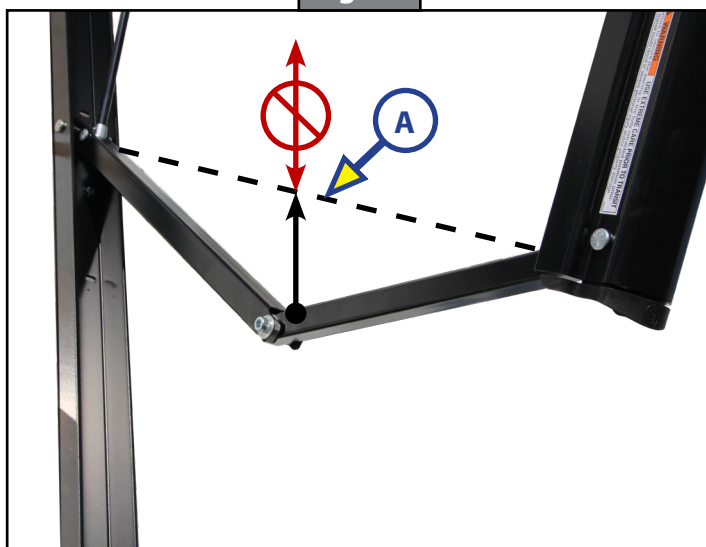


Fig. 12



Fig. 13



## Troubleshooting

### Manual Override

In the event of power loss or motor failure, the awning can be extended or retracted manually. Perform the following procedure to manually extend or retract the awning.

**NOTE:** This procedure may also be performed to extend or retract the awning in the event of dry camping or camping without a battery.

1. Remove the rubber grommet (Fig. 14A) from the drive head assembly, exposing the manual override nut on the motor.

**NOTE:** The drive head assembly is always located on the right side of the awning as it is viewed from outside of the unit.

2. Using a  $\frac{7}{16}$ " socket and cordless power drill, spin the manual override nut (Fig. 15A) clockwise to extend (Fig. 15B) or counterclockwise to retract (Fig. 15C) the awning.

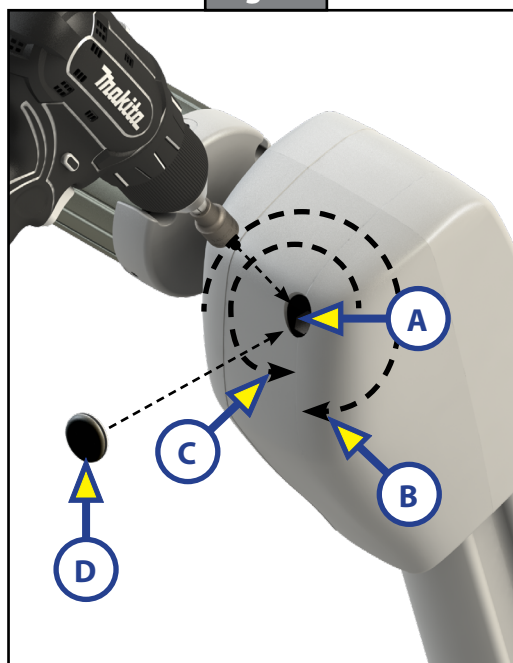
**NOTE:** Use caution when extending or retracting the awning manually. The use of a step stool or ladder may be required to completely extend or retract the awning.

3. When the awning is completely extended or retracted, remove socket or drive device and replace the rubber grommet (Fig. 15D) in the drive head assembly.

Fig. 14

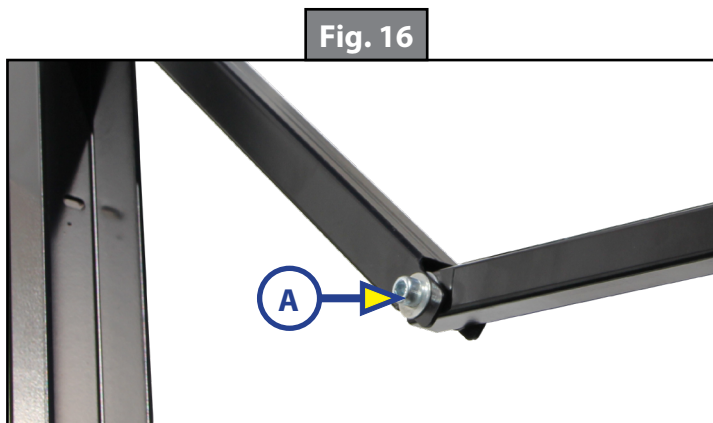


Fig. 15



## Troubleshooting Adjusting Pitch - All Solera Awnings

**NOTE:** If the articulating arm does not hold position, it can be tightened by adjusting the bolt (Fig. 16A) in the center of the articulating arm.



**NOTE:** When tightening the bolt do not tighten more than 1/4 turn at a time and do not tighten to the point of crushing the pitch arm.

**NOTE:** Existing Belleville washers and bolt are installed in a specific orientation for tensioning. Removal of these components or modification of the orientation will cause adverse effects on the pitch arm functionality.

## **Maintenance**

### Resources Required

- 5 gallon bucket
- Clean water
- 1/4 cup of dish soap

### Fabric Care

#### **⚠ CAUTION**

**Over-spray of cleaning solution can cause eye and sensitive skin irritation. Flush affected area with clean water and seek medical attention, if necessary. Wear eye protection and appropriate protective clothing to avoid personal injury.**

#### **⚠ CAUTION**

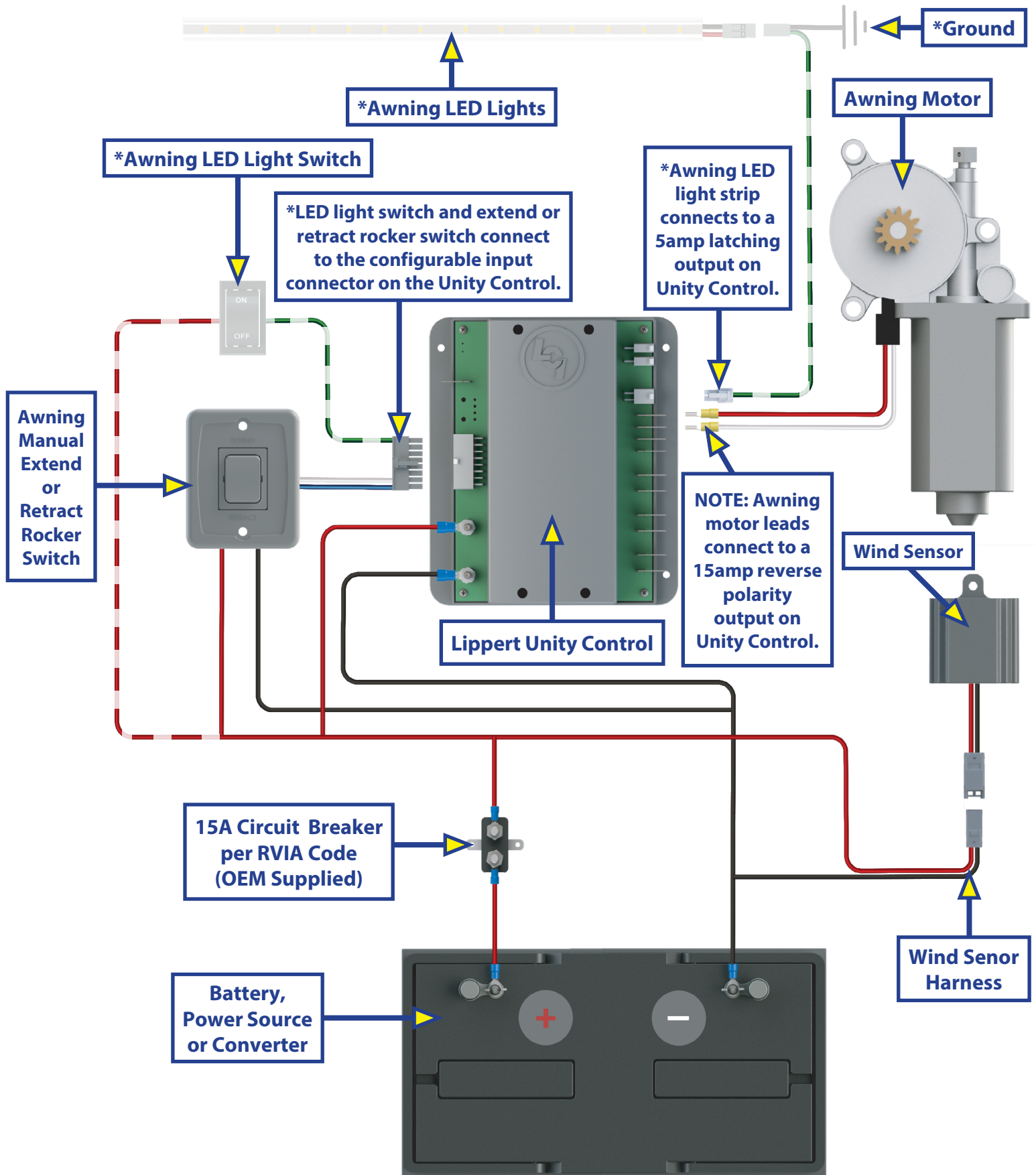
**Moving parts can pinch, crush or cut. Keep clear and use caution.**

If the awning is retracted while wet, extend the awning and let it dry as soon as conditions allow before retracting. This will help prevent the formation of mildew and add greatly to the life of the awning.

**NOTE:** Mildew does not form on the fabric itself, but on the accumulated dust, dirt and grime. Periodically clean vinyl or woven acrylic fabric using a mixture of 1/4 cup of dish soap and five gallons of warm water.

1. Liberally apply the mixture on the top of the fabric and retract the awning for five minutes. This will apply the mixture to the bottom of the fabric as well.
2. Extend the awning and hose off with fresh water.
3. Repeat if necessary.
4. Allow to dry before retracting.

# Wiring Diagram



**NOTE:** \*If applicable, light kits are optional.

## Notes

[illegible]



The contents of this manual are proprietary and copyright protected by Lippert Components, Inc. Lippert prohibits the copying or dissemination of portions of this manual unless prior written consent from an authorized Lippert representative has been provided. Any unauthorized use shall void any applicable warranty. The information contained in this manual is subject to change without notice and at the sole discretion of Lippert. Revised editions are available for free download from [lippert.com](http://lippert.com).

Please recycle all obsolete materials.

For all concerns or questions, please contact Lippert.  
Ph: 432-LIPPERT (432-547-7378) | Web: [lippert.com](http://lippert.com) | Email: [customerservice@lci1.com](mailto:customerservice@lci1.com)