

# Programming Remote Controls MODELS D1B, D2B & D3B

## WARNING

To prevent possible SERIOUS INJURY or DEATH:

- Keep remote control and battery out of reach of children.
- NEVER permit children to access the Deluxe Door Control Console or Remote Controls.
- Operate the door ONLY when it is properly adjusted, and there are no obstructions present.
- ALWAYS keep a moving door in sight until completely closed. NEVER cross the path of a moving door.

To reduce risk of fire, explosion or electric shock:

- DO NOT short circuit, recharge, disassemble or heat the battery.
- Dispose of batteries properly.

### To Program Remote Control (s):

1. Press/release the "LEARN" button once on the control panel, "OK" LED will glow and beep. The unit is now ready to accept a remote control in the next 30 seconds.
2. Press/release any desired button on the Remote Control.
3. The "OK" LED will flash and beep twice indicating Remote Control is stored successfully.

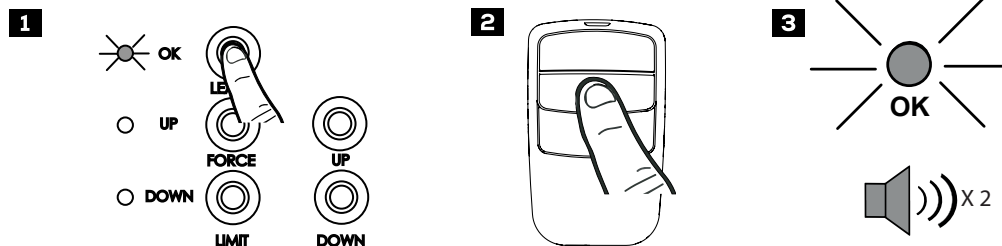
Up to 20 Remote Controls (including wireless keypad codes) can be added to the unit by repeating the above procedure. If more than 20 Remote Controls are stored, the first stored Remote Control will be replaced (i.e. the 21st Remote Control replaces the 1st stored Remote Control) and will beep 5 times.

\*If the courtesy light is already on, it will flash once and stay illuminated for 30 seconds.

\*\*If a Remote Control is not accepted, the courtesy light will stay on for 30 seconds, beep 4 times and then stay on for 4-1/2 minutes. Retry programming the Remote Control by repeating the steps above.

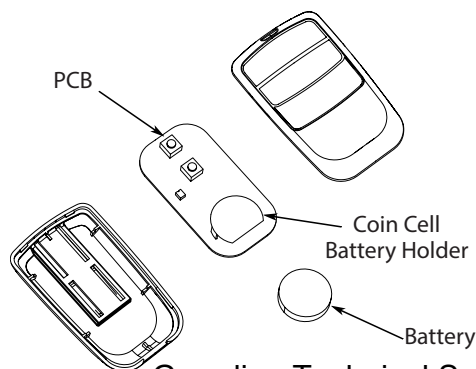
### Removing ALL Remote Controls:

To remove ALL Remote Controls from memory, press and hold the "LEARN" button for 3 seconds. The "OK" LED will flash and beep 3 times indicating ALL Remote Controls have been removed from memory.

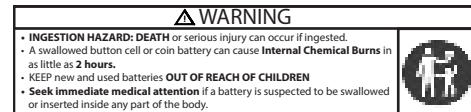


### Replacing Remote Control Battery:

When the battery of the Remote Control is low, indicator light will become dim and / or the range of the Remote Control will decrease. To replace the battery, pry open the Remote Control using the visor clip or small screwdriver. Replace with a CR2032 battery. Snap the housing back together.



This device complies FCC Rules for HOME OR OFFICE USE. Operation is subject to the following two conditions: (1) this device may not cause harmful interference, and (2) this device must accept any interference received, including interference that may cause undesired operation.



Guardian Technical Service: 1-424-272-6998

Notice to CA users: WARNING: This product can expose you to chemicals, including lead, that are known to the State of California to cause cancer, birth defects or other reproductive harm. For more information go to [www.P65Warnings.ca.gov](http://www.P65Warnings.ca.gov). This product contains a CR coin cell lithium battery which contains perchlorate material. Special handling may apply. See [www.disc.ca.gov/hazardouswaste/perchlorate](http://www.disc.ca.gov/hazardouswaste/perchlorate). Keep away from small children. If battery is swallowed, promptly see a doctor. Do not try to recharge this battery. Disposal of this battery must be in accordance with your local waste management and recycling regulations.