

---

**PHILIPS**

Service  
Manual



HR2500

# General information

---



## General specifications

Product features: ProBlend technology, Tritan Renew™ Tumbler, NutriU app, Easy to use, Detachable blade, Sustainably designed, Modern and minimalistic sty

## Technical specifications

Power: 350 W  
Voltage: 220-240 V  
Cord length: 0.85 m  
Working capacity tumbler: 0.6 L

## Weight and dimensions

Dimensions of product (LxWxH): 118 x 116 x 360 mm  
Weight of product: 1.05 kg

## Finishing

Material of main body: Bio-based plastic

## Design

Color(s): Silk White Matte

## Important repair instructions

- Only skilled personnel should carry out the repair.
- After repair the appliance should function properly.
- After repair the appliance has to meet the regulatory – and safety requirements that were applicable at the time of release of the model.
- After repair the appliance always has to be tested for electrical safety according VDE 0701–0702 and for medical products IEC 62353.

# Disassembly - and Reassembly advice

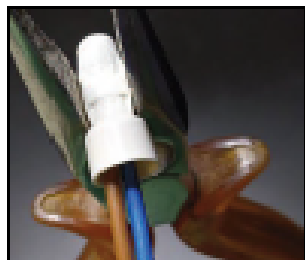
## During disassembly and repair

### Wiring and crimp connections instructions \*

**Caution:** Some wiring insulation types, like silicone wiring, are very soft and easy to damage. Replace damaged wires.

Whenever an electrical component is repaired, crimp connectors should be opened.

- The easiest way is to reopen a closed crimp housing, is by attacking from the side with pliers.



**Note:** Do not cut the old crimp as this causes shortening of the wires and can be an issue afterwards. Always connect the wires with a new 2 or 3-wire crimp housing.

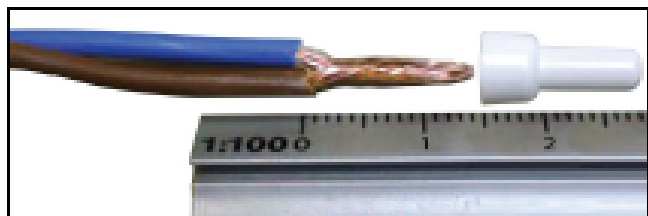
### Required tool when replacing crimp connections:

Ratchet Crimping Tool

- Oval crimp tool for insulated cable connectors
- 0.5 mm<sup>2</sup> – 6 mm<sup>2</sup>

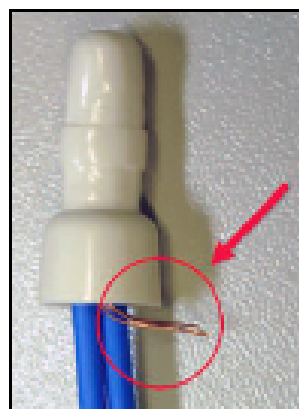
### Preparing of wires.

- Twist the nude copper wires together along the entire length of the strip.



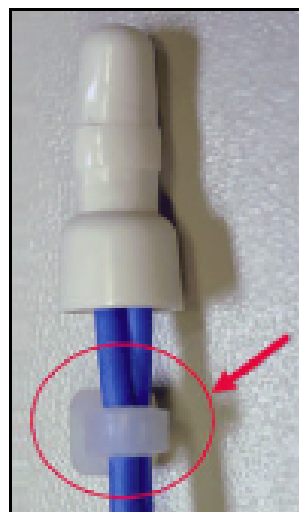
- 16 mm (0,63 in) Max
- 13 mm (0,51 in) Min
- Insert the wires into a new crimp housing.

- Make sure not to miss any single wire, as any loose wire that comes into contact with metal parts of the appliance may cause electrical shocks.
- Center the ratchet crimping tool on the crimp housing, and crimp with 6 kg/cm<sup>2</sup>.



- Perform a pull test to check that wires are firmly fixed!

- Tie ribs are used as strain relief for these crimp connector types.
- Always use or replace tie ribs when replacing crimp connectors!



### WARNING:

- Make sure that the crimp is fully tightened. If not done properly it can cause inner sparking, cause overheating and in worst case cause a fire!
- Please align the crimp in such a way that with high air humidity, moist cannot be captured into the crimp housing.
- When reassembling, the open sides of the crimp housings should always face down.

### \* Reference Documents

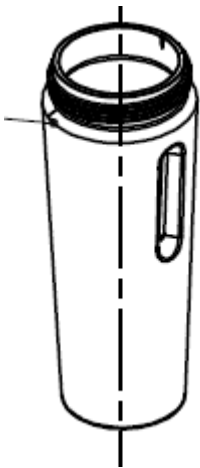
1. IEC 61210:1993 "Flat quick-connect terminations for electrical copper conductors – Safety requirements"
2. IEC 60352-2:1990 (amd. 1:1996 + amd. 2:2002) "Solderless crimped connections – General requirements, test methods and practical guidance"

Spare Parts

1



2



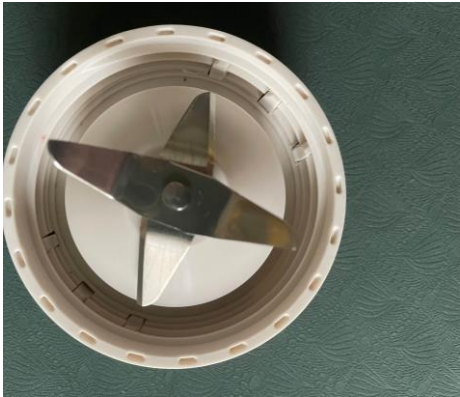
3



4



5

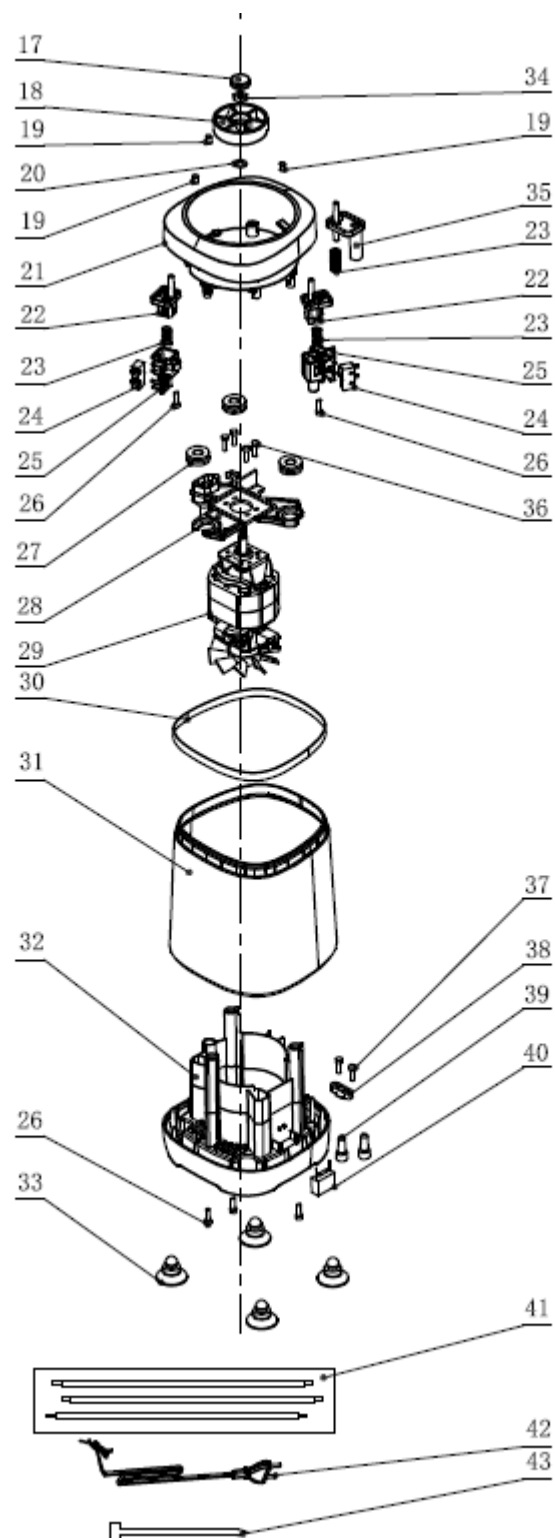
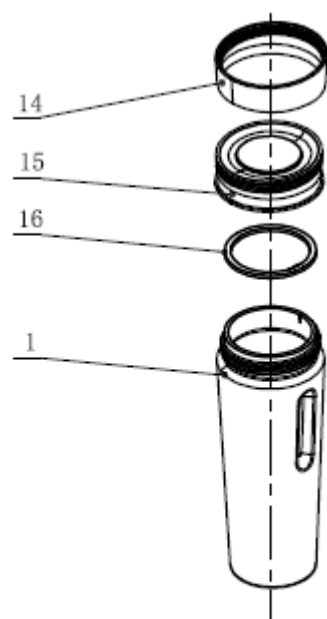
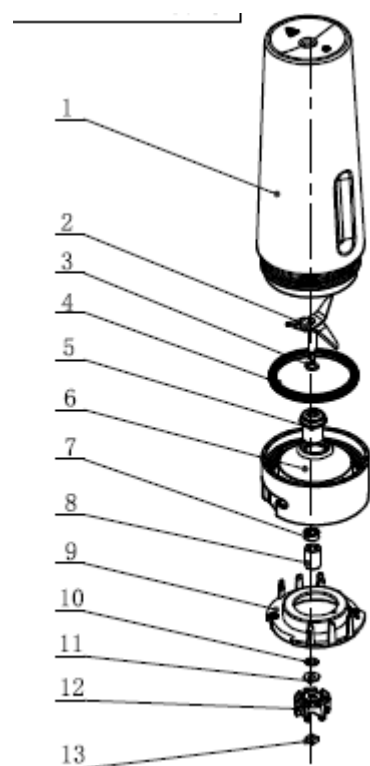


6



Part List

1	300009504511	HOUSING ASSY VDE PLUG
1	300009504521	HOUSING ASSY KR PLUG
1	300009504531	HOUSING ASSY UK PLUG
2	300009504541	TUMBLER JAR
3	300009504551	TUMBLER JAR LID
4	300009504561	TUMBLER JAR LID SEAL RING
5	300009504571	JAR BLADE ASSY
6	300009504581	BLADE SEAL RING



# Version History

1. Version A: Initial release

-----WK2222



[www.philips.com](http://www.philips.com)