

## FEATURES & SPECIFICATIONS

**INTENDED USE** — The LHQM Exit Combo is great for applications requiring both an exit sign and emergency unit equipment in one product. The LHQM provides a sleek, modern and uniform aesthetic for any general purpose life safety application. It is available with an optional high-output option to power remote heads for an egress lighting system. **Certain airborne contaminants can diminish integrity of acrylic and/or polycarbonate.** [Click here for Acrylic/Polycarbonate Compatibility table for suitable uses.](#)

**CONSTRUCTION** — Engineering-grade thermoplastic housing is impact-resistant, scratch-resistant and corrosion proof.

UL94V-0 flame rating. UV-stable resin resists discoloration from natural and man-made light sources.

Rugged uni-body housing snaps together with no additional fasteners. Faceplate and back cover are interchangeable on housing. Positive snap-fit tabs hold faceplate securely, yet are easily removable for internal access. Reinforced, impact-resistant red/green color panels.

Letters 6" high with 3/4" stroke, with 100 ft. viewing distance rating, based upon UL924 standards.

**U.S. Patent No. 6,848,798; 6,499,866; 6,142,648; 5,797,673; D379,373; 5,526,251; D484,272; D473,672; 5,611,163; 5,646,502.**

**OPTICS** — LED light heads are adjustable forward/backwards, up/down and left/right for optimal adjust-ability.

LEDs operate for a minimum of 90 minutes in battery back-up mode.

The typical life of the exit combo LED is >5 years, based on 24/7 operation.

One, 1.2W LED per light head.

**ELECTRICAL** — Mult-volt, 120-277VAC, 50/60Hz.

**LHQM:** 7.2V, 1200mAh Ni-Cad Battery.

**LHQM HO:** 7.2V, 1800mAh Ni-Cad Battery. Provides 2.4W of Remote Capacity.

**INSTALLATION** — Mounting canopy provides both top and back mount capability. Canopy design uses cam locking pin to secure sign to canopy with no visible hardware seen from the floor.

Ships as a single sided exit with additional face plate and red/green color panels to easily convert from single face exit to double face exit.

Directional chevrons can be easily removed and reinserted depending on the application.

**LISTINGS** — UL Listed. UL damp location 50°F to 104°F (10°C to 40°C) listed. Meets all applicable requirements for UL 924, NFPA 101 (current Life Safety Code), NFPA 70 (NEC), California Energy Commission Title 20 section 1605.3 (W)(4) and OSHA. Meets all applicable FCC Title 47, Part 15, Subpart B requirements. NOM certified.

**BUY AMERICAN ACT** — BAA — Buy America (n) Act: Product with the BAA option qualifies as a domestic end product under the Buy American Act as implemented in the FAR and DFARS. Product with the BAA option also qualifies as manufactured in the United States under DOT Buy America regulations.

Please refer to [www.acuitybrands.com/buy-american](http://www.acuitybrands.com/buy-american) for additional information.

**WARRANTY** — 5-year limited warranty. (Battery is prorated). This is the only warranty provided and no other statements in this specification sheet create any warranty of any kind. All other express and implied warranties are disclaimed. Complete warranty terms located at: [www.acuitybrands.com/support/warranty/terms-and-conditions](http://www.acuitybrands.com/support/warranty/terms-and-conditions)

**Note:** Actual performance may differ as a result of end-user environment and application.

All values are design or typical values, measured under laboratory conditions at 25 °C.

Specifications subject to change without notice.

† Exit Signs Certified in the CA Title 20 Appliance Efficiency Database.

Catalog Number
Notes
Type



White



Black



Brushed Silver

**QUANTUM**  
Thermoplastic Exit Combo

**LHQM**



CS

Looking for Contractor Select readily available configurations? Click here to visit Contractor Select™ spec sheet or go to [www.contractorselect.com](http://www.contractorselect.com)

### ORDERING INFORMATION

Lead times will vary depending on options selected. Consult with your sales representative.

**Example:** LHQM S B RG MVOLT HO M6

LHQM Family	Face type	Housing color	Letter color	Voltage	Options
LHQM Stencil face, single face plate with extra face plate for field conversion from single face to double face	S Stencil	W White B Black BBS Black with brushed silver faceplate	RG Red/Green Switchable	MVOLT 120-277VAC; 50/60Hz	(blank) None HO High-output Ni-cad BAA Buy America(n) Act Compliant <sup>1</sup> SALIDA Salida signage, NOM standard (non-UL) <sup>2</sup>

#### Accessories: Order as separate catalog number.

ELA WG3 Wireguard, 30" W x 13-1/2" H x 6" D <sup>3</sup>	ELMRE LP220L SGL 1.2W Single Remote Head <sup>5</sup>
ELA LQMUS12 12" Stem kit, brushed aluminum with white canopy <sup>4</sup>	ELMRE LP220L T 2.4W Twin Remote Head <sup>5</sup>
	ELMRW LP220L SGL 1.2W Single Remote Head (Wet Location Rated) <sup>5</sup>
	ELMRW LP220 T 2.4W Twin Remote Head (Wet Location Rated) <sup>5</sup>

#### Notes

- BAA option only orderable for these 2 configurations in white housing: LHQM S W RG MVOLT BAA M6 and LHQM S W RG MVOLT HO BAA M6.
- SALIDA only orderable for these 2 configurations in white housing: LHQM S W RG MVOLT SALIDA (NON-UL) M6 and LHQM S W RG MVOLT HO SALIDA (NON-UL) M6.
- See spec sheet [ELA-WG](#).
- See spec sheet [ELA-Stemkits](#).
- See spec sheet [ELMRE](#) or [ELMRW](#).

LHQM Red/Green Selectable QUANTUM® Exit/Unit Combo

SPECIFICATIONS

Electrical				
Primary Circuit				
	Typical LED life¹	Supply voltage	Max amps	Max watts
Red and green LED	>5 years	120	.05	3.5
		277	.03	4.5

BATTERY

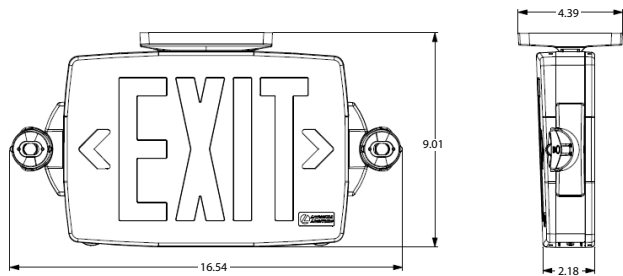
Ni-Cad				
Voltage	Typical Shelf life²	Typical life²	Maintenance³	Temperature range⁴
7.2	3 years	6-8 years	none	50-104°F (10-40°C)

- 1 Based on 24/7 operation. The typical life of the exit LED lamp is >5 years.
- 2 At 77°F (25°C).
- 3 All life safety equipment, including emergency lighting path of egress, must be maintained, serviced and tested in accordance with all National Fire Protection Association and local codes. Failure to perform the required maintenance, service or testing could jeopardize the safety of occupants and will void all warranties.
- 4 Temperature range where unit will provide capacity for 90 minutes. Higher and lower temperatures affect life and capacity.
- 5 Battery life is negatively impacted by many variables including temperature, charging rates, number of cycles and deep discharges due to long periods of time without AC power.

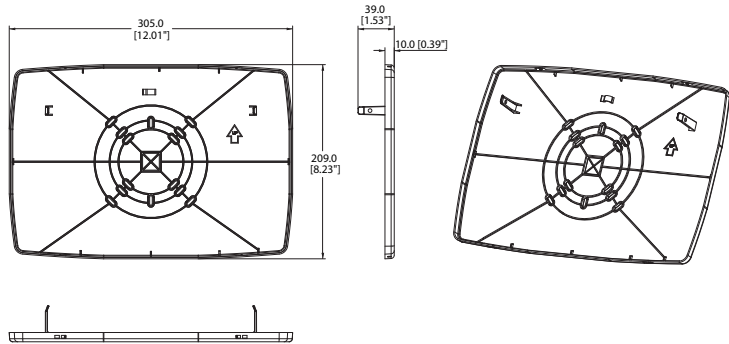
Remote Output Capacity		
Standard unit	Combo	Combo/high-output battery(HO)
NA	NA	2.4W

MOUNTING

All dimensions are inches (centimeters).  
Length: 16.5" (42)  
Width: 2.5" (6.2)  
Height: 8.2" (21)  
Weight: 3.3 lbs. (1.9 kgs.).  
(HO) 3.4 (1.54 kgs.)

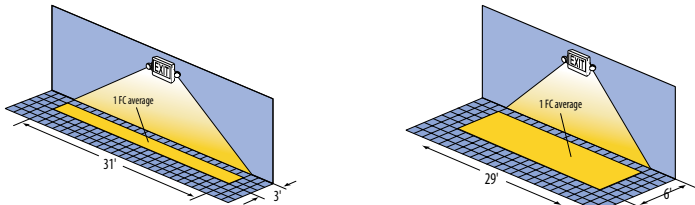


Back Mounting



LAMP PHOTOMETRICS

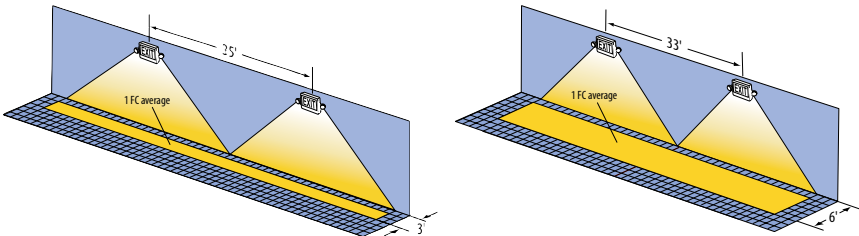
QUANTUM Red/Green Switchable – SINGLE COVERAGE  
2.4W Total White LEDs  
Using a single unit at a typical 7.5' mounting height delivers an average illuminance of 1.0 FC over a distance of 31' on a 3' path of egress and 29' on a 6' path of egress.



Example of single LHQM exit illuminating a 3' path of egress

Example of single LHQM exit illuminating a 6' path of egress

QUANTUM Red/Green Switchable SERIES – MULTIPLE COVERAGE  
2.4W Total White LEDs  
Using multiple units at a typical 7.5' mounting height delivers 35' center-to-center spacing on a 3' path of egress and 33' center-to-center spacing on a 6' path of egress.



Example of multiple LHQM exits illuminating a 3' path of egress

Example of multiple LHQM exits illuminating a 6' path of egress