



Visit our resources page  
for more information



**MODERN HORIZONTAL PRIVACY FENCE**  
INSTALLATION GUIDE (07/25)

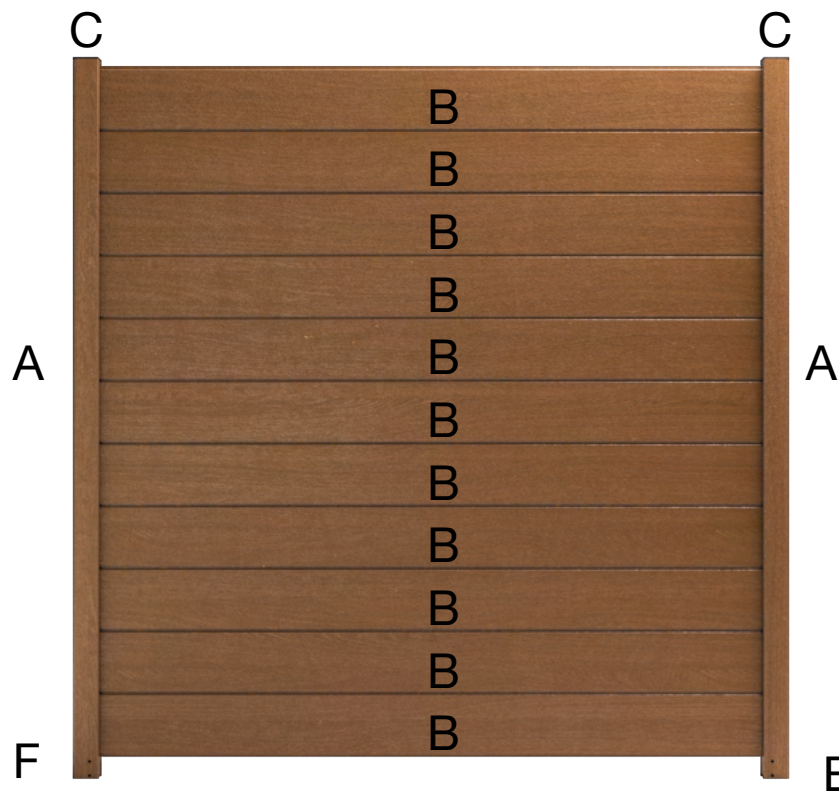
*Our products and/or processes are protected by the following patents, as well as other patents that are pending:*

**Composite Modern Horizontal Privacy Full Size  
Fence (6 ft. H x 6 ft. W) - Nominal Size: 69 in. x 70 in.**

**COMPONENTS**

ITEM	QTY	DESCRIPTION	NC PART
<b>Complete Product</b>	<b>1</b>	<b>Modern Horizontal Full Size Fence</b>	100301XX60600
<b>A</b>	2	2.5" X 2.5" X 94" COMPOSITE U-CHANNEL POST	300722XX094
<b>B</b>	11	TONGUE AND GROOVE BOARD 1" x 6" x 67"	300340XX067
<b>C</b>	2	2.5" U-CHANNEL SLIDING TOP CAP	200721BK00C
<b>D</b>	1	Top Cable Assembly	200030GV06900
<b>E</b>	1	Board Stop Assembly (Pre-Installed)	200720BK00000
<b>F</b>	8	#8 1-5/8" Truss Head Screw	ACSCR#8X1-5/8BRONZETRUS

*\*please note hardware kit is included in-between U-Posts in box*



## BEFORE YOU BEGIN

### Verify Underground Utilities

Use aids such as local building departments, utility companies, or utility location services to ensure the area is free from underground lines or hazards.

1. **Locate Property Lines**  
Ensure the fence is installed within your property boundaries to avoid encroachment and comply with legal requirements.
2. **Consult Local Building Codes**  
Review local codes to ensure the fence and gate installation meets all requirements. Obtain any necessary permits before starting the installation.
3. **Wear Appropriate Safety Equipment**  
Always wear gloves, safety goggles, and work boots to avoid injuries during installation.

## TOOLS REQUIRED

### Tools for Preparing the Fence and Post Burial

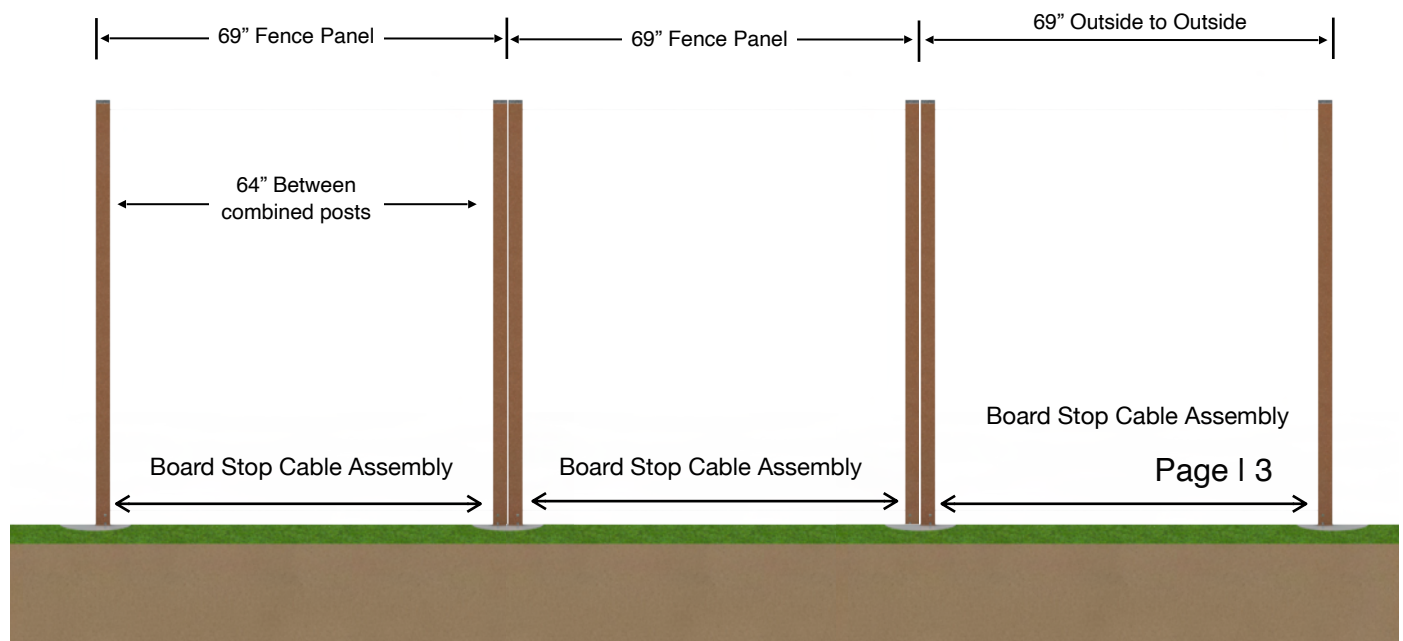
- Tape Measure
- Post Hole Digger & Shovel
- **Post Bubble Level** (for ensuring posts are vertically aligned at 90 degrees)
- Level and String Line
- Wheelbarrow
- Stakes or Markers
- **Torx T20 Bit** (for fastening the self-drilling composite screws provided by NC for both securing the posts and attaching the post cap)
- We recommend using a **power tool** for both operations to ensure proper installation of the fasteners.

## FENCE LOCATION

1. **Mark the Fence Layout:** Use stakes and a string line to outline the fence location. The string helps ensure the fence remains straight during installation.
2. **Locate Gate Placement:** Mark the post hole locations for gate posts according to the gate installation instructions.
3. **Mark Corners and Ends:** Identify the locations of corner and end posts.
4. **Mark Intermediate Fence Posts:** Posts should be placed no wider than **69 inches (5.75 feet)** between posts for each fence panel.

### Can I paint my fence?

No! Painting is not advisable. Our products come pre-finished with durable, lasting color and a textured, non-reflective surface. They're designed to maintain their appearance without the need for painting, staining, or sealing—just occasional cleaning with soap and warm water.



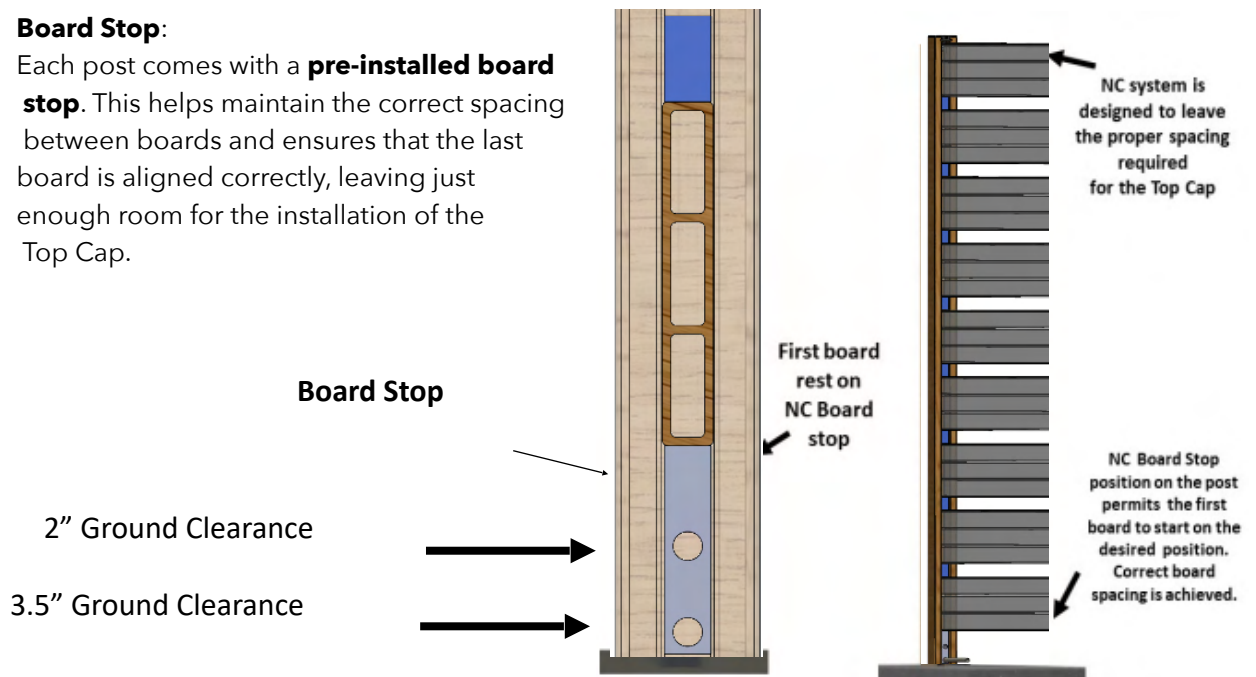
## Posts Set Up

The **NC patented Universal Post System** is designed for maximum flexibility. Unlike traditional systems that require specific post types (start/end posts, line posts, and corner posts), the NC Modern system uses a **single, versatile U-channel post** that can be adapted for any configuration, simplifying the ordering process and providing flexibility during installation.

Each NC panel system includes **two U-channel posts**, designed with features for smooth installation:

### Board Stop:

Each post comes with a **pre-installed board stop**. This helps maintain the correct spacing between boards and ensures that the last board is aligned correctly, leaving just enough room for the installation of the Top Cap.

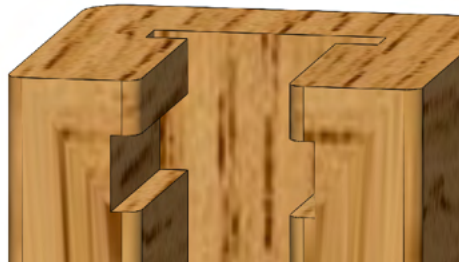


- **Grooves at the Top:**

The posts have **grooves at the top** to accommodate the **Top Cable Fastener** during installation. These grooves also serve as the attachment points for the **Top Cap**, which finalizes the installation and gives the fence a finished look.



TOP CABLE GROOVE



TOP CAP GROOVE



## Prepare Your Posts

### For **Multiple Panel Sections:**

- **Note:** When installing multiple panels, bolt the posts together before the burial process. This ensures proper alignment and simplifies installation.

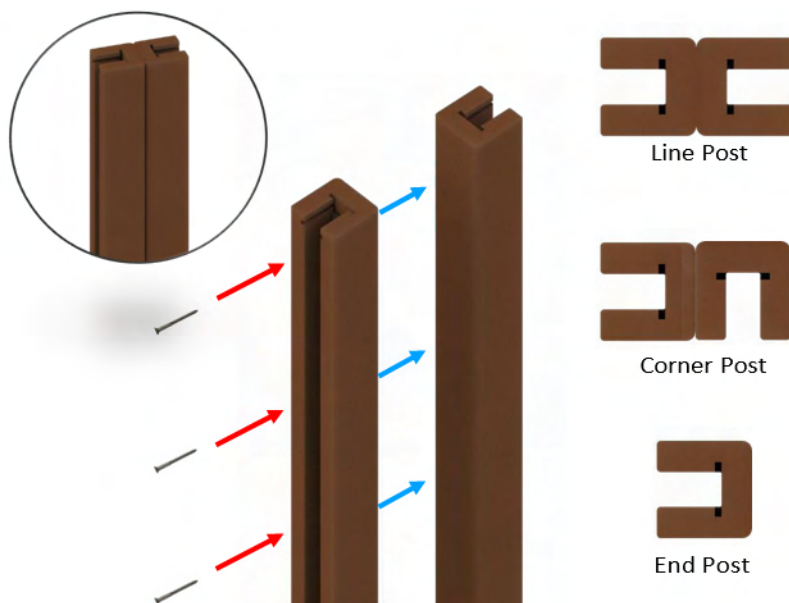
### Procedure for Line Sections, Corner Posts, and End/Gate Posts:

The **NC system** uses a patented design with a **versatile U-channel post**. The **5 composite screws** provided should be used to assemble the posts in the desired configuration. We recommend using a **Torx T20 Bit** and power tool for faster, secure assembly:

- **For Line Sections:** Install two U-channel posts **back-to-back** to seamlessly connect panels.
- **For Corner Posts:** Install two U-channel posts **adjacent to each other**, ensuring correct orientation for corners.
- **For Start/End or Gate Posts:** Install a **single U-channel post** at the start, end, or gate section.

### Do I need to buy a line, corner and start/end post?

No! Our patented U-Post system is designed for ultimate versatility, allowing you to use the same post for corners, line posts, and start/end posts with ease. This simplifies installation and reduces the number of different components needed.



### Can my fence be surface mounted or only buried?

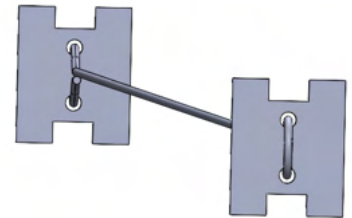
Our composite fence posts are engineered for maximum stability when buried directly into the ground. For best results, we recommend digging 12-inch diameter holes at least 26 inches deep, setting the posts 24 inches below grade. However, if in-ground installation isn't possible—such as on concrete patios or driveways—our posts can still be surface-mounted using common bracket systems. There are two installation options for concrete surfaces: 1. Attach the standard U-Posts included in any Modern Fencing Panel model using a bracket. Our U-posts are compatible with hardware like the RPBZ ZMAX Galvanized Retrofit Post Base for double 2x4 nominal lumber. 2. **For more stability**, purchase our [Commercial-Grade Posts](#) for a stronger and more polished installation, originally designed to support gates. These posts can be placed between each panel and anchored using the E-Z Base Black Powder-Coated Post Base for 4x4 Nominal Lumber. For added strength, we recommend inserting a 4x4 pressure-treated wood post inside the bracket and the composite post in this configuration. This ensures better support for screws and results in a sturdier overall installation. Additionally, securing the fence to an adjacent structure—such as a house, wall, or corner—will help minimize movement, as angles provide natural reinforcement *\*Please note surface mounts negate our warranty as we have tested our products as buried.*



## Precise Post Spacing for Installation

### NC Top Cable Solution

Another patented feature of the NC system is the **Top Cable Fastener**, which ensures precise post spacing during installation.



#### 1. Precise Post Spacing During Installation

- The **Top Cable system** consists of two H-type fasteners and a **69-inch cable** connecting them. This ensures the precise spacing required for the fence panels to function properly.
- **Install the Top Cable before the burial process:** Insert the H-shaped fasteners into the grooves of the U-shaped posts. Spread the posts apart until the cable is **fully extended**. This keeps the posts aligned and properly spaced during this critical stage. the posts are spaced at exactly **69 inches**.

2.

#### 3. Maintaining Post Alignment During Curing

The **Top Cable Fastener** should remain in place throughout the concrete curing process. This keeps the posts aligned and properly spaced during this critical stage.

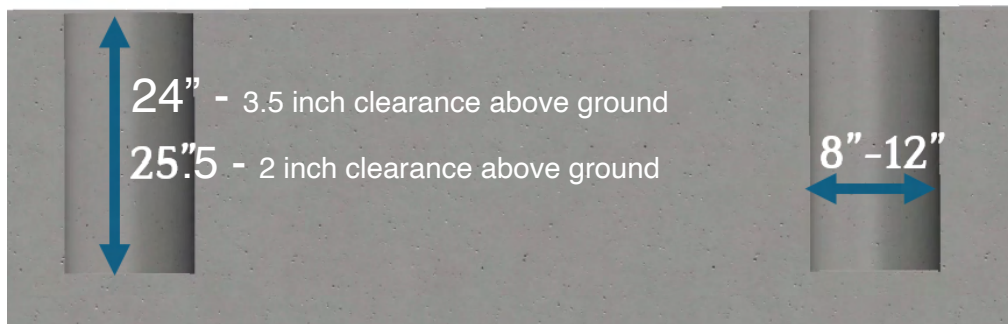
**Note:** The Top Cable Fastener is essential for maintaining the correct spacing for the free-floating board system, allowing the boards to move slightly without binding or falling out.

- **If Spacing is Too Short:** Boards will not fit correctly between the posts.
- **If Spacing is Too Wide:** Boards may become loose and potentially fall out of the channels.

## Post Installation

#### 1. Dig Post Holes to the Correct Depth

Dig **12-inch diameter holes** at least **25.5 inches deep** to ensure proper stability when



For any further information or questions please visit [www.naturescomposites.com](http://www.naturescomposites.com) or call us at (877) 810-4029





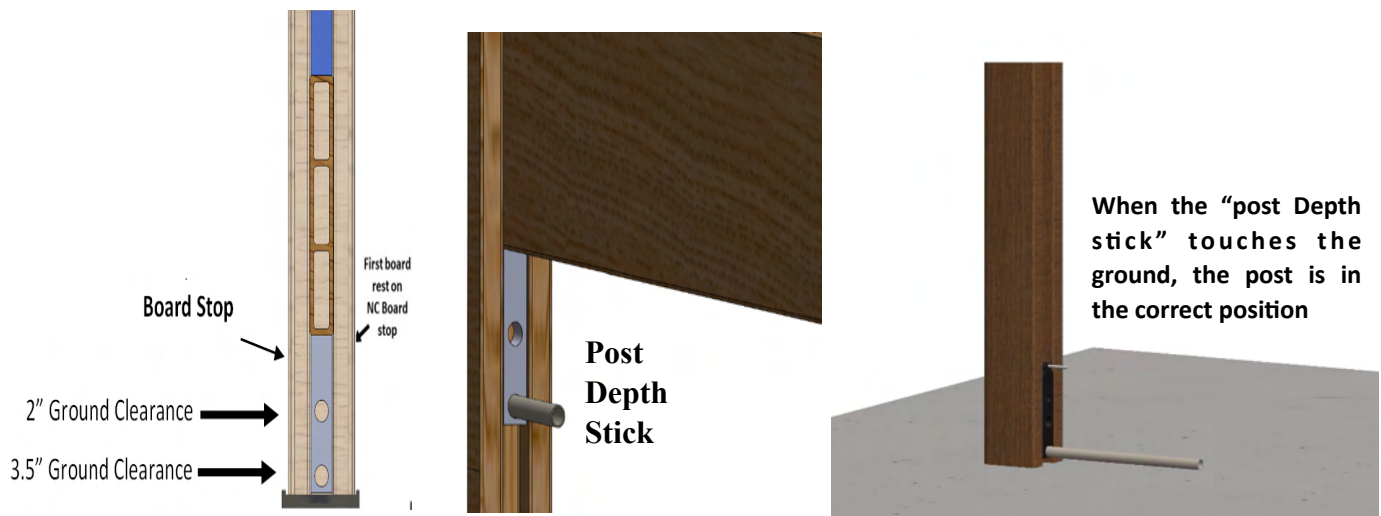
## 2. Add Gravel for Drainage

Pour **6 inches of gravel** into the bottom of each post hole to improve drainage and ensure long-term stability.

## 3. Set the Posts in Concrete: Two Critical Factors to Monitor

When setting the posts in concrete, monitor two critical factors to ensure the correct installation:

- **1. Precise Post Spacing:**  
Use the **NC Top Cable Fastener** to ensure posts are spaced correctly at **69 inches**. Before pouring the concrete, ensure that the **Top Cable is fully extended** to lock the posts in place at the correct distance, allowing proper fence panel installation. Keep the **Top Cable tensioned** throughout the curing process to prevent any movement or misalignment of the posts.
- **2. Ground Clearance:** Ground clearance is essential for the proper function and appearance of the fence. The **NC system** includes a **Post Depth Stick**, which provides a visual guide to ensure posts are buried to the correct depth, allowing for the intended ground clearance:
  - If the **Post Depth Stick** is installed in the **bottom cavity**, the ground clearance will be **3 ½ inches**.
  - If installed in the **top cavity**, the ground clearance will be **2 inches**.



Lower the post into the ground until the **Post Depth Stick** touches the surface. This ensures that the post has been buried to the correct depth. If the terrain is uneven, ensure that both posts are at a consistent depth and aligned horizontally. Use a **Post Bubble Level** to check for vertical alignment.

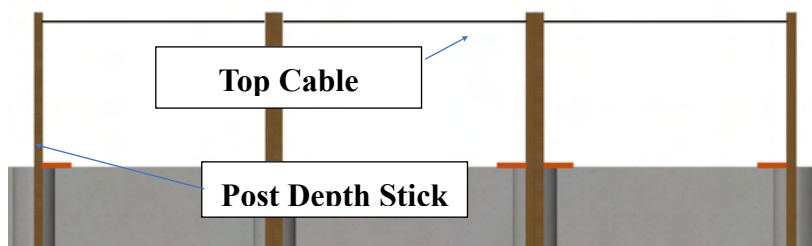


4. **Maintain Proper Post Alignment and Spacing**

Keep the **Base Cable Assembly** taut to ensure the posts remain correctly spaced. Additionally, continue to use the **Top Cable Fastener** to maintain proper post alignment during the curing process.

5. **Allow the Concrete to Cure**

Allow the concrete to cure for **24-48 hours** before proceeding with installation.



## Fence Board Installation

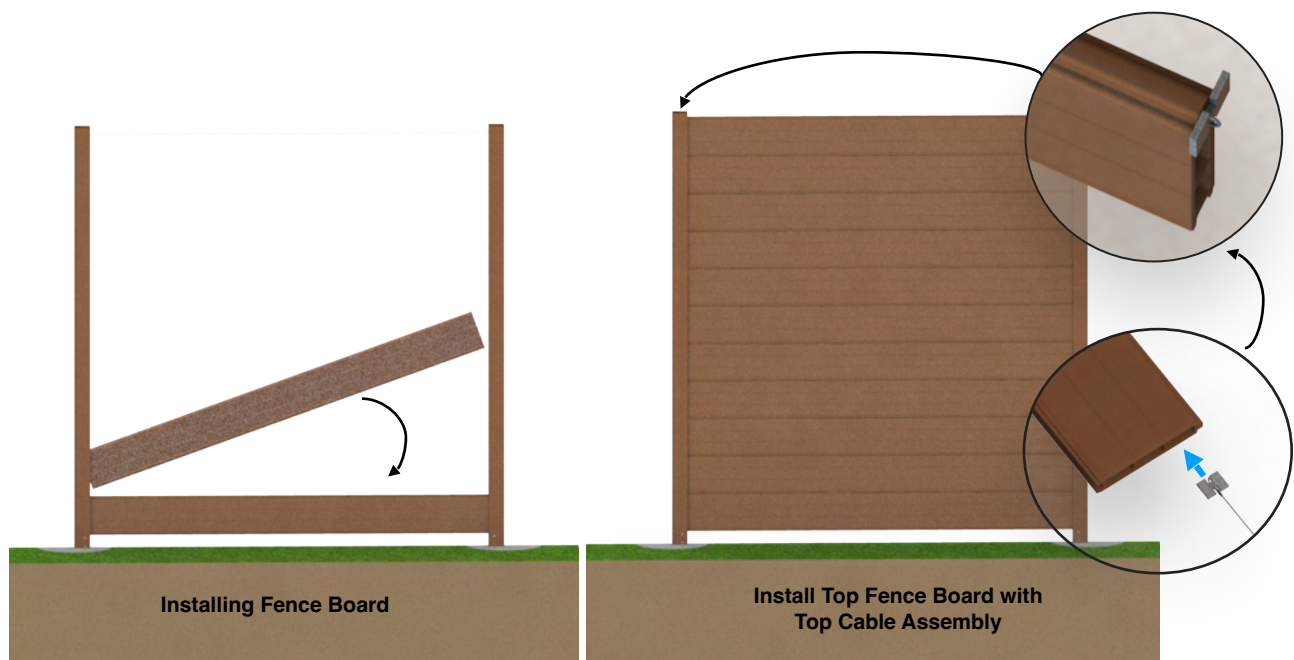
1. After concrete has set it is time to move into fence board installation.
2. The Hollow Tongue and Groove Boards come pre-cut to the proper post spacing. SEE IMAGE ON NEXT PAGE.
3. Install Hollow Tongue and Groove Boards with the tongue of the fence facing up and the groove in the fence board facing down. Hold the fence board at an angle and insert one end into the channel of the post. Then rotate the other end of the fence board down until it slides into the channel of the other post. Push the first fence board down until it comes to rest meeting the Board Stop Assembly.
4. Install fence boards about halfway up by repeating the above step, pressing each groove onto the other previous board's tongue. **DO NOT USE A HAMMER TO FORCE THE FENCE BOARD INTO POSITION, AS IT MAY DAMAGE THE COMPOSITE FENCE BOARDS!**
5. Remove the Top Cable Assembly from Posts and install into the Top Hollow Tongue and Groove Board
6. Install the remaining board, except the Top Board with the Top Cap Assembly
7. Insert the Cable Assembly through the inside of the top hollow board as shown in photo below.
8. Install Top Board with Top Cable Assembly, to do this rotate the Top Cable Bracket so that is perpendicular to the Board. Then slide the Board with the Cable assembly down the U-Channel Post so that the Top Cable Bracket lines up with the routed space. Continue pressing down the Top Board until its groove is on the previous board's tongue.

## Can I cut my fence to adjust the length?

Yes, our proprietary wheat-based composite formula can be cut just like wood using standard wood-cutting tools. When cutting a fence panel or ranch rail down, make sure to cut all boards at the same place to avoid creating an uneven alignment. Once the panel is cut, you will also need to adjust the Top Cable Assembly, which helps keep the posts plumb and properly spaced. To do this, cut the top cable to the desired length and remove the top cable bracket at the end, as it will need to be replaced. You will need to purchase an aluminum ferrule and stop set to reattach the shortened cable, ensuring it functions correctly. You can reattach it by hitting it with a hammer to crimp it back into place. Following these steps will help maintain proper spacing and stability during your fence installation.







## TOP CAP INSTALL

1. Slide the Top Cap into the Top Cap Routed space on the top of the U-Channel post.
2. Fasten the **Top Cap** using the provided 1-3/4 inch composite screws with a **Torx T20 Bit** and power tool.
3. Repeat for all U-Channel Posts.



***Our products and/or processes are protected by the following patents, as well as other patents that are pending: US 11,053,707; US 12,110,703; US 12,084,880***

