

Start Here



Serenellifehome.com/register

serenelife™



SLSUP925LED

Inflatable Stand-Up Paddle-Board

USER GUIDE



Important Warnings

- This board does NOT provide protection against drowning.
- Only use within recommended pressure levels.
- Designed for swimmers only—not a lifesaving device.
- Always supervise children in the water.

Prohibited Uses:

- Do not use in white water.
- Do not use in breaking waves.
- Do not use in offshore currents.
- Do not use in strong offshore winds.
- Not for children under 10 years old.

Usage Guidelines:

- Read instructions before use.
- Fully inflate all air chambers before use.
- One adult per board only.
- Safe distance from shore: Maximum 150 meters (492 ft).

California Prop 65 Warning



This product may expose you to chemicals, which is known to the state of California to cause cancer, birth defects and other reproductive harm. Do not ingest.

For more info go to: www.P65warnings.ca.gov

WARNING & SAFETY REMINDERS

Before Use:

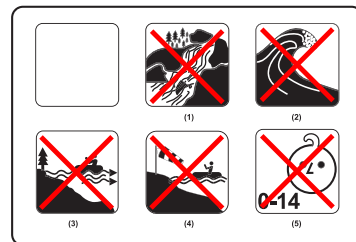
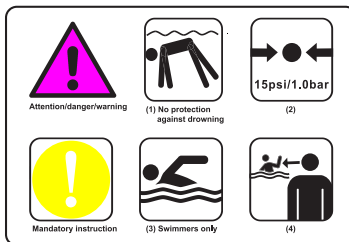
- Inspect your board and gear before heading into the water.
- Avoid paddling alone—use the buddy system.
- Carry a communication device while on the water.
- Check weather conditions and tides before riding.
- Avoid paddling when winds are blowing away from shore.

While On the Water:

- Be aware of tides and currents to estimate your travel time.
- Wear a wetsuit or dry suit when needed.
- Always wear a life jacket or flotation device.
- Take a first aid course and carry first aid equipment.

DO NOT:

- Use the board if you cannot swim.
- Go on the water if under the influence of alcohol or drugs.



Features:

- Stand-Up Paddleboard (SUP)
- Single-Person Inflatable Platform
- Water-ready with Everything Needed to Paddle
- Stable Design for Children, Teens, and Adults
- Marine-Grade, Waterproof, Corrosion-Resistant Build
- Lightweight, Portable and Convenient
- Built-in LED Lights, Multiple Color Options
- Hassle-Free Setup for Quick Water Fun
- Smooth Surface
- Advanced Double-Welded Seam
- Easy to Inflate and Deflate
- Non-Slip EVA Deck Pad
- Wide/ Stable Shape
- Quick Fin Installation and Removal
- Ideal for Beginner to Intermediate Young Paddlers
- Suitable for Lakes, Rivers, or Oceans

What's in the Box:

- SUP Paddle-Board
- Double-Action Hand Pump
- (3) Shaft Aluminum Paddle
- (1) Operating Box with Third Gen Battery
- (1) Leash

- (2) Small Fixed Fins
- (1) Big Removable Fin
- Repair Kit
- Backpack

Technical Specs:

- Construction Materials: Single-Layer Drop-Stitch + Double-Layer Side
- Number of Battery: 3
- Battery Construction Material: ABS
- Type of Battery: Rechargeable
- Battery Voltage: 12V
- Milliamp Hours (mAh): 2200
- Battery Wattage: 24.42 Wattage
- Battery Cells: Lithium Ion
- Battery Weight: 437g (including box)
- Weight Amount Lithium Battery
(If the Battery is Lithium): 138g
- Water Fun for Ages: 10+
- Recommended Air Pressure Inflation: 13 PSI (0.89 Bar)
- Max. Weight Capacity: 275 lbs.
- Item Weight: 18.94 lbs.
- Product Dimension (L x W x H): 10'6" x 32" x 6" -in. (Inflated)

INTRODUCTION

THIS INSTRUCTION BOOKLET CONTAINS IMPORTANT SAFETY INFORMATION. PLEASE READ AND KEEP FOR FUTURE REFERENCE.

Inflatable stand-up paddleboards (ISUPs) are an excellent option for camping trips, boating, and riders with limited transport or storage space. The board is impressively stiff due to its high-quality materials and professional design.

Our premium Drop-Stitch construction ensures unmatched stability and rigidity within the inflatable product category.

This manual has been compiled to help you operate your inflatable Stand-Up Paddleboard (hereinafter referred to as ISUP) safely and enjoyably. It contains details about the ISUP, the equipment provided, and their proper operation. Please read it thoroughly and familiarize yourself with the ISUP before use.

Even the strongest ISUP can be severely damaged if not used properly. Improper use is incompatible with safe boating. Always adjust the ISUP's speed and direction according to water conditions.

All users must wear a suitable buoyancy aid (life jacket or personal flotation device) when using the ISUP. In some countries, wearing a buoyancy aid that complies with national regulations is legally required at all times.



ISUP Structure Terminology



Important Information

- Read the product instructions thoroughly before use. Store the manual for future reference.
- Inspect the product carefully after opening the package. If you discover any damage, contact the after-sales department immediately.



Paddle



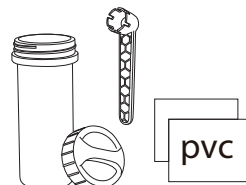
Backpack



Hand Pump



Operating Box



Repair Kit



Fins

SET-UP PREPARATION

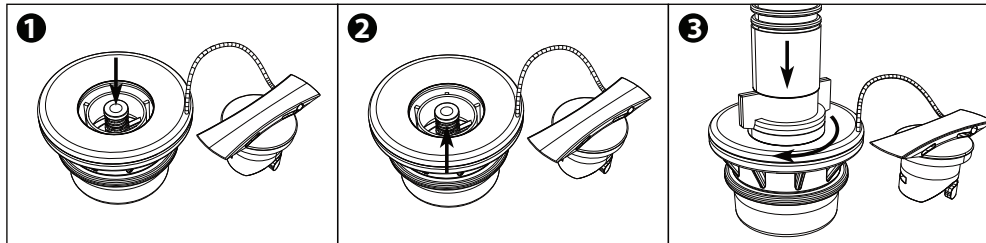
1. Unfold the Board

- Choose a smooth, clean surface to unfold the board.
- Roll out the board until it lays flat with the top side facing up.

2. Valve Operation

Follow the steps below for proper valve operation and correct inflation/deflation procedures:

- The inflation valve is located near the nose of the board.
- **For inflation:** Ensure the center valve pin is in the “UP” position. If the pin is in the “DOWN” position, press it once to return it to the “UP” position.
- **For deflation:** Press the valve pin to the “DOWN” position. You do not need to twist it.

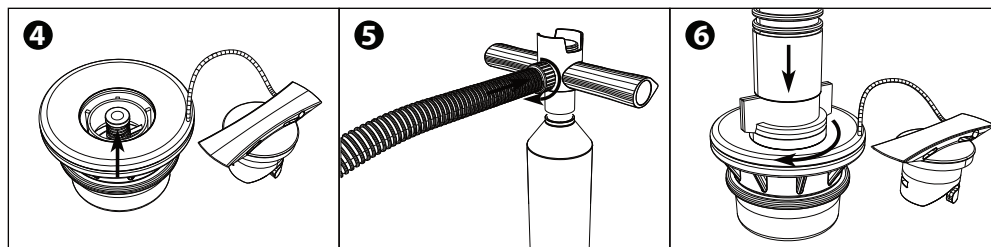


Important:

- Avoid sand or debris around the valve during deflation, as small particles may become airborne when air pressure is released.
- Always lock the valve cover over the valve stem during use to prevent accidental air release or entry of debris into the air chambers.

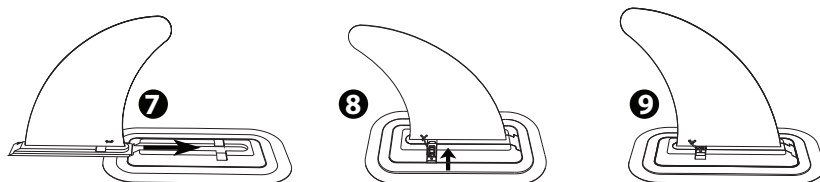
3. Board Inflation Steps

- a. Unscrew the valve cap and press down the valve pin to open the valve. Let air naturally flow into the board to save time.
Once some air has entered, press the valve pin again to return it to the "UP" position.
- b. Ensure the pump hose is connected to the "INFLATE" outlet.
- c. Connect the pump nozzle to the valve receptacle using a half-twist motion (clockwise).
- d. **Pump air into the board by sliding the pump piston up and down. Inflate until the required pressure is reached:**
 - **Minimum pressure:** 8 psi
 - **Recommended operating pressure:** 15 psi
- e. After inflation, tighten the valve cap securely. Only the valve cap ensures final airtightness.



4. Fin Installation

- The two side fins are pre-attached to the board.
- After inflation, slide the middle fin into its base and secure it by inserting the fixed pin.



5. Inflation Tips and Precautions

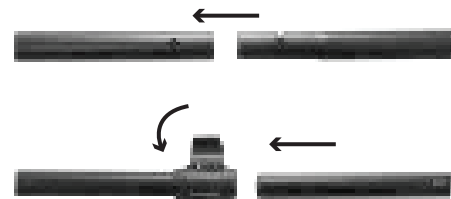
- **Do not use an air compressor.** Over-inflation caused by an air compressor can damage the board and is not covered under warranty.
- A slight pressure loss over 2–3 days is normal due to temperature changes. If needed, add air with the pump.
- Before long paddling trips, inflate the board for 24 hours beforehand to ensure it is airtight.
If you notice consistent air loss, refer to the “Board Repair” section for leak detection instructions.
- **Maximum pressure:** Do not exceed 15 psi. Proper pressure is achieved when the board feels firm under hand pressure.
- Avoid pumping the board to high pressure and leaving it in direct sunlight for extended periods.
In hot environments, slightly deflate the board, as heat will increase internal pressure.
- In colder water conditions, you may notice a slight pressure drop. Carry a pump with you to add air if necessary.

ALU Telescopic Kayak Paddle

Your paddle comes in three pieces. Follow these steps to assemble and adjust it:

1. Press and hold the button while sliding the paddle pieces together until they click into place.
2. Adjust the top section of the paddle to find the ideal height:
 - Start with the paddle approximately 6 inches taller than your height.
 - Adjust the top section up or down until the paddle length feels comfortable.
 - A longer paddle is better for smooth, easy paddling, while a shorter paddle is ideal for performance or competition.

Note: If the adjustable section feels loose after assembly, tighten the screw with a screwdriver to ensure a secure fit.



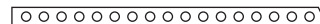
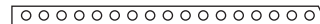
- **Adjustable Length:** 63" – 83" (160 – 210 cm)
- **Lightweight & Floating:** 2.1 lbs (960 g)
- **Shaft Material:** Alloy 6005-T6, with 1.14" (29 mm) and 1.06" (27 mm) diameter sections
- **Compact Design:** Disassembles into three 31" (79 cm) sections for easy storage and transport

Operating Box

- Waterproof Rating: IP67
- Dimensions: 4.92" × 3.19" × 2.05" (125 × 81 × 52 mm)
- Input: DC 12V
- Output: 12V RGB
- Battery Type: 3 × 3.7V – 42V Li-ion Battery
- Battery Capacity:
 - 1500mAh
 - 11.1V – 12.6V, 2200mAh
- Charging Duration: Approx. 35 hours (5V, 2A)

RGB LED Strip Lights

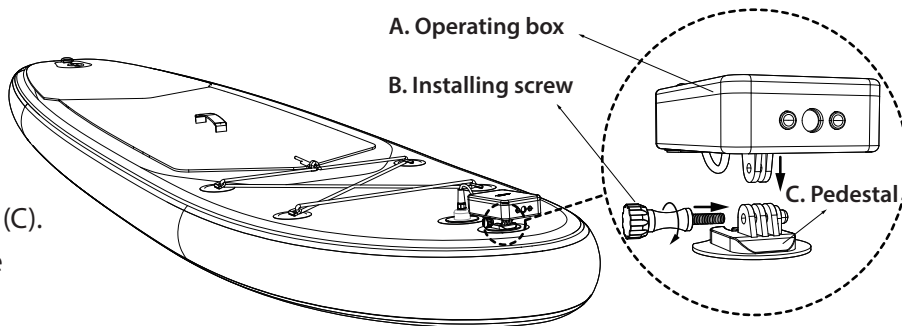
- Weight: 6.3 oz (180 g)
- Length: 23 ft (7 m) / 24.6 ft (7.5 m)
- Input: DC 12V
- Output Power: Max 19W



Operating Box Setup Instructions

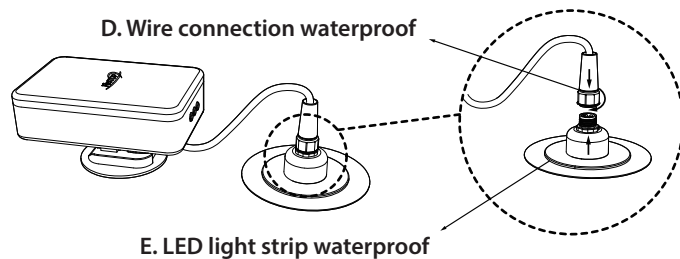
1. Install the Operating Box

- Insert the operating box (A) into the pedestal (C).
- Thread the screw (B) into the connecting hole and tighten it securely.

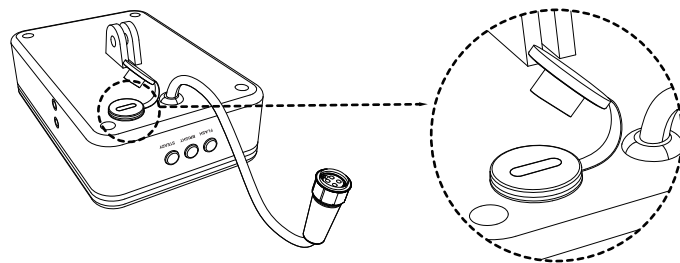


2. Connect the LED Light Strip

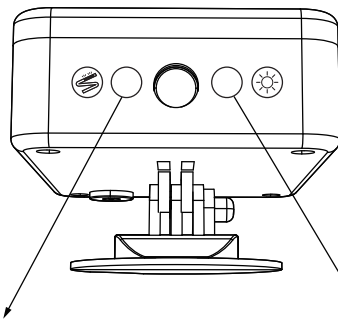
- Insert the waterproof wire connector (D) into the LED light strip waterproof connector (C).



- Tighten in the direction of the arrow to prevent water entry, which could damage the LED strip.

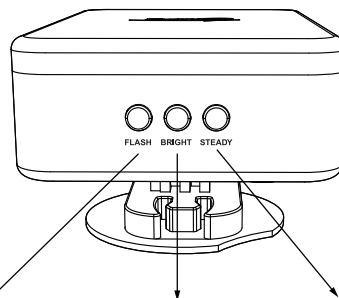


3. Type-C Charging Port



LED light strip On/Off button

Front light button

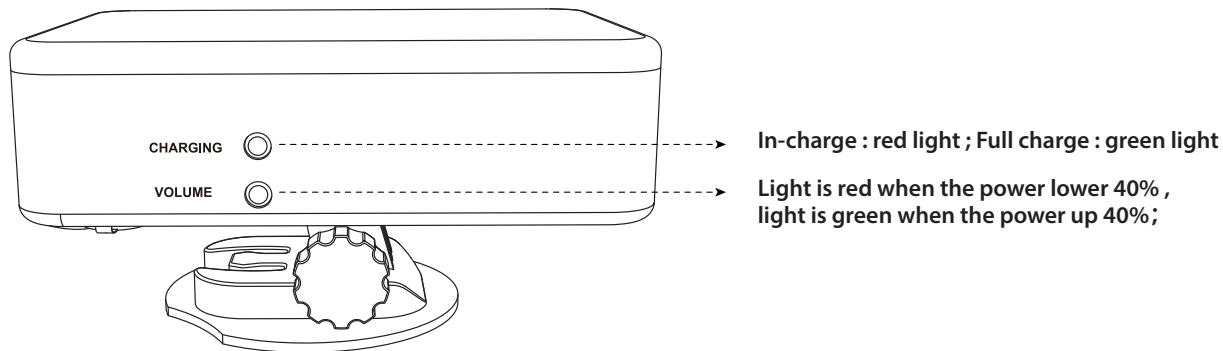


LED light control button

LED lightness level control button

LED strip color control button

4. Operating Box Button Diagram



5. Power/Charging Indicator Light Functions & Lighting Modes

FLASH Mode

- 7-Color Changing
- 7-Color Hopping
- 7-Color Flashing
- 3-Color Hopping
- 7-Color Brightness Adjustment
- 3-Color Brightness Adjustment

STEADY Mode

- Red
- Pink
- Blue
- Yellow
- Green
- White

Brightness Levels: Five adjustable settings

Attaching the LED Strip Lights

1. Locate the designated LED mounting points along the edges of the board.
2. Carefully attach the LED strip lights.
3. Secure the strips.
4. Connect the LED strip lights to the operating box.
5. Ensure the battery is fully charged before use.
6. Use the power button on the operating box to turn the lights on/off and cycle through colors.

Operating Box Instructions



LED Light Strip On/Off

Left Button: Turns the LED strip on/off



Front Light Button

Right Button: Turns the front light on/off

LED Brightness Control Button

Press and Hold: Adjusts brightness within these levels:

- 20%
- 40%
- 60%
- 80%
- 100%

FLASH Mode Button

Press Briefly: Cycles through lighting modes

STEADY Mode Button

Press Briefly: Cycles through steady color modes



WARNING

Battery Safety

- Keep the battery out of reach of children.
- If swallowed or inserted into any body part, seek immediate medical attention—severe or fatal injuries can occur within 2 hours.
- Handle with care and follow all safety instructions.



Waterproofing & Connections

- Ensure the Operating Box and LED strip light are correctly connected.
- Waterproof Level: IP67 (submersible in 3.3 ft (1 m) of water for 30 minutes).
- Before use, ensure the charging plug cover on the front light is securely fixed to prevent water entry.
- Always check for a sufficient power supply before use.

Operating Box General Safety

- Do not connect the LED strip or front light to any other device to prevent damage.
- When using near water (e.g., boating), always wear a life jacket and seat belt.
- Operating temperature: 32°F – 104°F (0°C – 40°C).
- Charging temperature: 50°F – 113°F (10°C – 45°C).
- For air travel, check airline regulations before transporting the battery.
- Keep the Operating Box away from gasoline, rubber solutions, and volatile substances.

Battery Handling

- Use only the provided charging plug. Using a different charger may impact battery performance, cause over-heating, or lead to safety hazards.
- Keep the battery away from flammable materials, liquids, and surfaces.
- Do not throw the charging box into fire.
- Do not place it in a microwave, high-pressure container, or induction cooker.
- Do not disassemble or repair the device—this may cause leakage, fire, or electric shock.
- If you notice any abnormalities, stop using immediately and contact customer service.

Lithium Battery Charging Methods & Precautions

1. Avoid High-Temperature Charging:

Charging the battery above 95°F (35°C) can reduce its lifespan and damage the battery.

2. Avoid Low-Temperature Charging:

Below 39°F (4°C), battery performance is reduced.

Some batteries may not charge at all in extreme cold. However, once warmed up, they return to normal capacity.

3. Frequent Use Extends Battery Life

- Use the battery regularly to maintain optimal performance.
- If not in use for an extended period, charge it fully once a month to maintain battery health.

LEAK DETECTION AND REPAIR

Air Leak Detection

If the board is losing air pressure (not due to temperature changes), check for leaks, starting with the valves. While a leaking valve is rare, if you find one, tighten it using the included wrench.

To locate a leak:

1. Mix soap and water in a spray bottle.
2. Spray the solution around the valve.
3. If you see bubbles forming, check the valve seating and base, ensuring the valve insert is tightly screwed.
4. If the issue persists, contact customer support.

If the valves are secure but the board is still losing air, there may be a small puncture. These can be repaired easily:

- Spray soap and water around the board until you see bubbles. Mark the leak location.
- If no bubbles appear, inflate the board to maximum pressure and listen carefully.
- Once you narrow down the leak, use the spray bottle again to confirm the exact spot.

Repair Kit Instructions

For Punctures Smaller Than 1/8"

1. Deflate the board and clean/dry the affected area.
2. Apply a small drop of glue over the puncture.
3. Allow it to dry for 12 hours before re-inflating.

For Larger Tears/Rips

1. Deflate the board completely and lay it flat. Allow it to dry.
2. Cut a patch at least 2 inches larger than the tear on all sides.
3. Clean the repair area with alcohol.
4. Apply three coats of adhesive to both the patch and the board, waiting 5 minutes between coats.
5. Place the patch carefully over the tear. The adhesive reacts quickly, so position it accurately.
6. Use a roller to ensure the patch is flat and even.
7. Wait 24 hours before re-inflating the board.

INSTRUCTIONS FOR CARE AND STORAGE

Follow these guidelines to maintain your board:

Before Storage:

- Rinse the board with fresh water and let it dry completely to prevent mildew.
- Use only mild soap and water for cleaning—avoid harsh chemicals.

Storage Options:

- You can store the board inflated or deflated.
- If deflated, store it in the protective bag provided.
- If storing outdoors, keep it off the ground and covered with a tarp to protect it from sun exposure.

What to Avoid:

- Hanging the board is not recommended.
- **Do not store the board in extreme temperatures:**
 - Above 150°F (66°C)
 - Below -10°F (-23°C)
- Do not roll the board too tightly when storing it deflated.

Fixing Bent Fins:

Place them in boiling water and use a hairdryer to reshape them.

Register Product

Thank you for choosing SereneLife. By registering your product, you ensure that you receive the full benefits of our exclusive warranty and personalized customer support. Complete the form to access expert support and to keep your SereneLife purchase in perfect condition.

Start Here



Model Number:
SLSUP925LED

[SereneLifeHome.com/pages/register](https://www.serenelifehome.com/pages/register)

serenelife™



Questions or Comments

We are here to help!

Phone: 1.718.535.1800

Serenelifehome.com/ContactUs