

Auto-Tracking Camera

Quick Start Guide

www.MyLumens.com

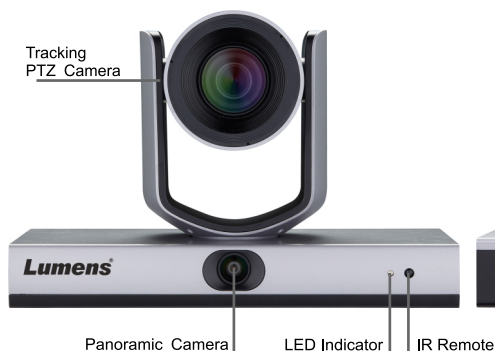
Lumens[®]

⚠ Important

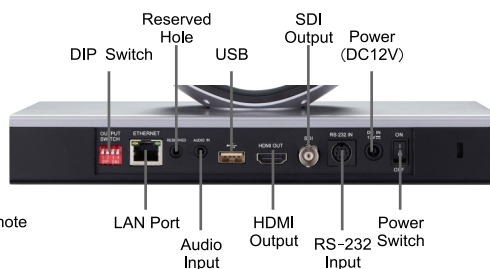
- * Please activate your warranty: www.MyLumens.com/reg.
- * To download the updated software, multilingual manuals, and Quick Start Guide, please visit Lumens[™] website at: <https://www.MyLumens.com/support>.

1. Product Introduction

1.1 Product Overview



1.2 I/O Interface



2. Instruction on OUTPUT SWITCH Setting

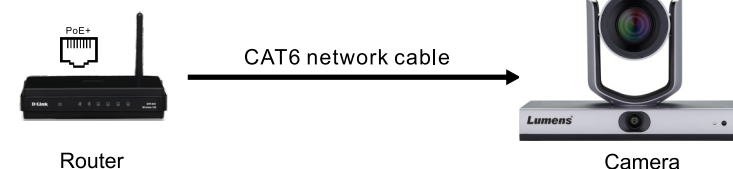
- 2.1 The factory default is MENU (depend on the setting menu), and the default resolution of the setting menu is 1080p60.
- 2.2 USB and IP may only choose one, because they cannot be output at the same time.
- 2.3 The camera will restart 5 seconds after modifying the DIP.
- * When all the DIP switches are set to ON, the resolution of the camera is determined by OSD.

Mode	Format	SW	Format	SW
USB		⬜⬜⬜⬜		
Ethernet	1080p60	⬜⬜⬜⬜	1080p50	⬜⬜⬜⬜
	1080p30	⬜⬜⬜⬜	1080p25	⬜⬜⬜⬜
	720p60	⬜⬜⬜⬜	720p50	⬜⬜⬜⬜
	MENU	⬜⬜⬜⬜		

OFF ON

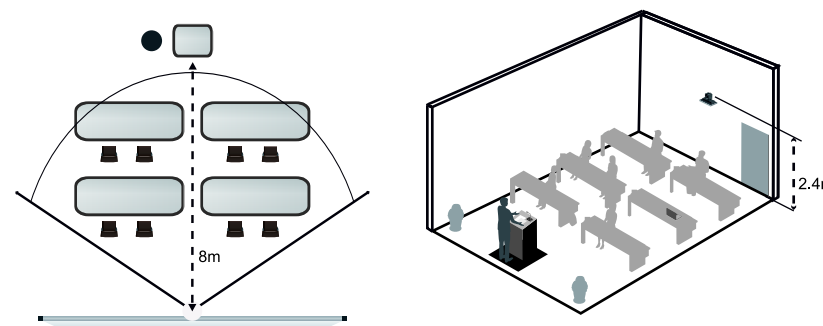
3. About the power supply

- 3.1 Connect the DC 12 V power adapter for power supply.
- 3.2 Access power by using a router that supports PoE or connecting to a HUB with an Internet cable.
- * The camera supports PoE+(IEEE802.3at)



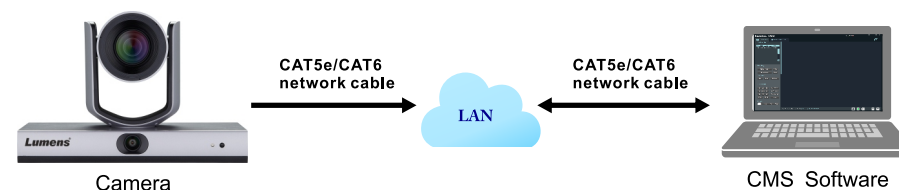
4. Installation Precautions

- 4.1 Applicable distance range of VC-TR1: 4-15 m, best tracking target distance recommended: 8m
- 4.2 Mounting height: 2-3 m, best height recommended: 2.4 m



- 4.3 To install the camera on the wall or ceiling, the accessories could be bought separately.

5. Camera connection description



Auto-Tracking Camera

Quick Start Guide

www.MyLumens.com

Lumens[®]

6. Instructions on Software Installation and Tracking Device

6.1 Confirm that the computer and the camera are in the same network segment

6.2 Install **LumensCMS** software

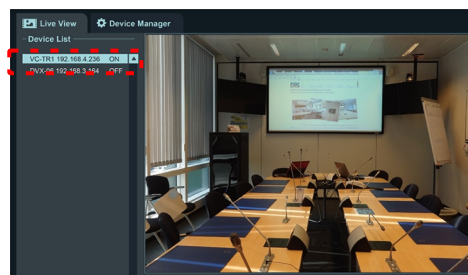
* Support Windows 7 and later versions

* Please download the relevant software from **Lumens** website

6.3 Open the **LumensCMS** software, and add in the camera

1. Automatically add it in

First, turn on the camera. After opening the LumensCMS software, the camera will be automatically added to the list for about 5~7 seconds. Double-click the camera to display the screen.



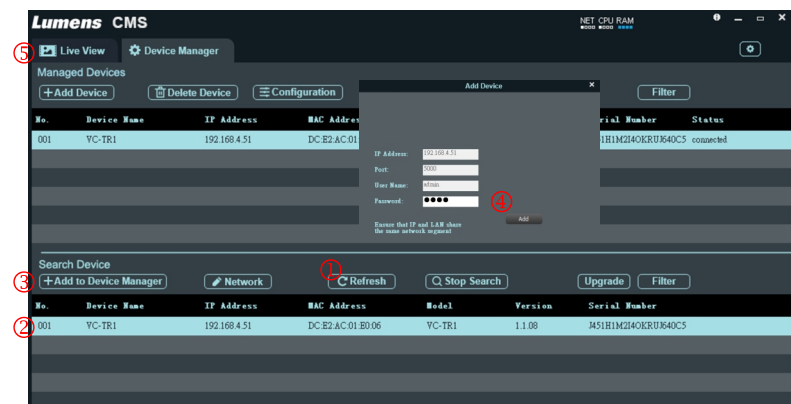
2. Manually add it in

Open the Device Manager page

2.1 Search Device: ①[Refresh]>②Click camera>③[Add to Device Manager]

④Click

2.2 Go back to ⑤[Live View]page. Double-click the camera added to the list to display the screen

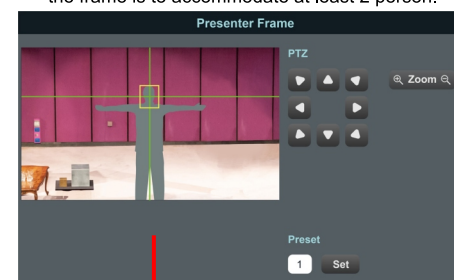


6.3 Set tracking parameters

1. Presenter Frame

Operate the PTZ to set the tracking screen. This setting determines the magnification and the vertical angle of the PTZ during tracking.

* Recommendation: The face shall be in the yellow auxiliary frame. After straightening the arms, the best distance between the left and right sides and the frame is to accommodate at least 2 person.



2. Stage Frame

Operate the PTZ to set the stage screen. When the camera loses the tracking target, the screen will automatically switch to the Stage Frame screen.



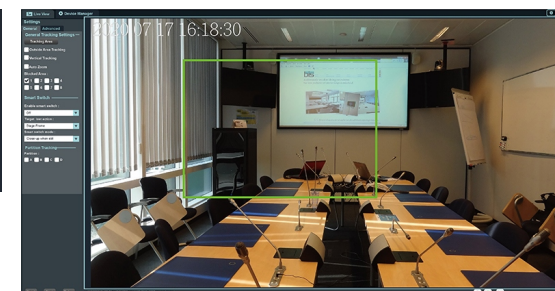
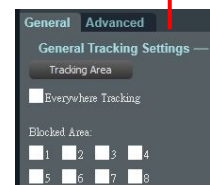
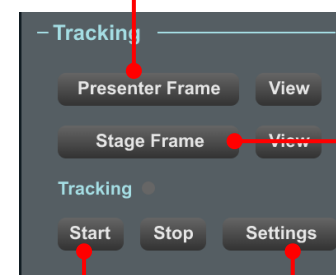
3. [Settings]>[Tracking Area]

Click **Tracking Area**

Drag the mouse to customize the tracking area (green frame), When the target appears in the tracking area, the camera will start the tracking.

■ Everywhere Tracking: After being checked, the target will still be tracked automatically if it is outside the green tracking area frame.

■ Blocked Area(1-8): Draw the Blocked Area. The Blocked Area can block the motion detection (but not the face detection).



4. Click **Start** to start the tracking.