

User Manual

INDEX

Most Important	1	Dash Cam Overview	2
Installation	3	Wifi Connection	4
APP INTRODUCTION	5	Q&A	6
SPECIFICATIONS	7		

MOST IMPORTANT

1 Please select the correct dash cam WiFi name when connect it:

WiFi name: HX300_*****2

Password: 12345678

2 Always keep the dash cam connected to the power for daily use because it is not a battery-powered camera, it will shut down immediately after you disconnect it from the power.

3 How to use the 24 hours parking monitor function?
You need buy a hardwire kit is required for this function.

Dash Cam Overview



Button Functions

Name	Functions
Power Button	Press-Once: Lock Video
	Long-Press(3 seconds): Turn Off the Machine
	Long-Press(5 seconds): To restore factory default settings

Installation

Just plug & Play

Our default settings of the dash cam allow you to use the camera as soon as you get it without modifying any settings. **Remember to format the SD card in the APP before using it for the first time.**

1. INSERT / REMOVE THE SD CARD

Please use CLASS 10, U3 Speed, and 64GB max SD card.

2. INSTALL DASH CAM TO WINDSHIEL



A Installation Area: Most of our customers will install dash cam next to the rearview mirror and close to the passenger side. Park your car in a safe and well-lit area before you start the installation.

B Please use wet & dry tissues to repeatedly wipe the place you choose to install the dash cam in order to clean the dust particles on the windshield and the grease evaporated.

C Tear off the adhesive film of the sticky pad and stick it onto car.

D Connect the car charger to the car cigarette lighter socket, then insert the USB end of the charger into the power port of the camera. Use the car wire trim tools to run the cable through the A-Pillar.

E Adjust the Angle: Please rotate the mount of the dash cam to get the complete video.

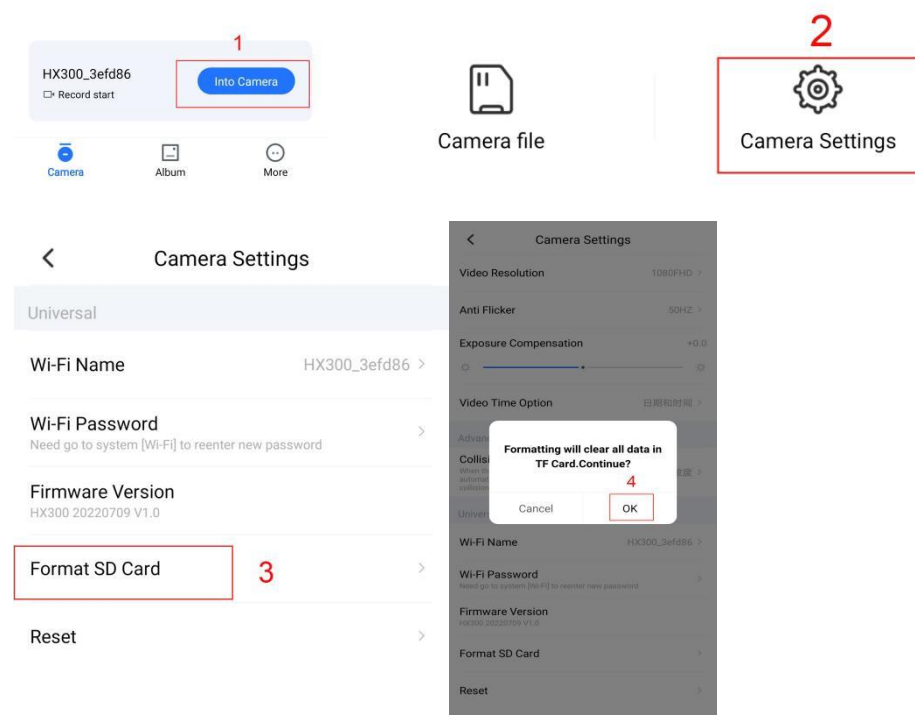


3. FORMAT THE SD CARD

A Connect the APP and Into Camera (See below “WiFi CONNECTION”).

B Click the “Camera Settings”

C On camera settings page, scroll down until you see “Format SD Card”, then choose “Format SD Card”, and click “OK” to confirm to format the memory card.



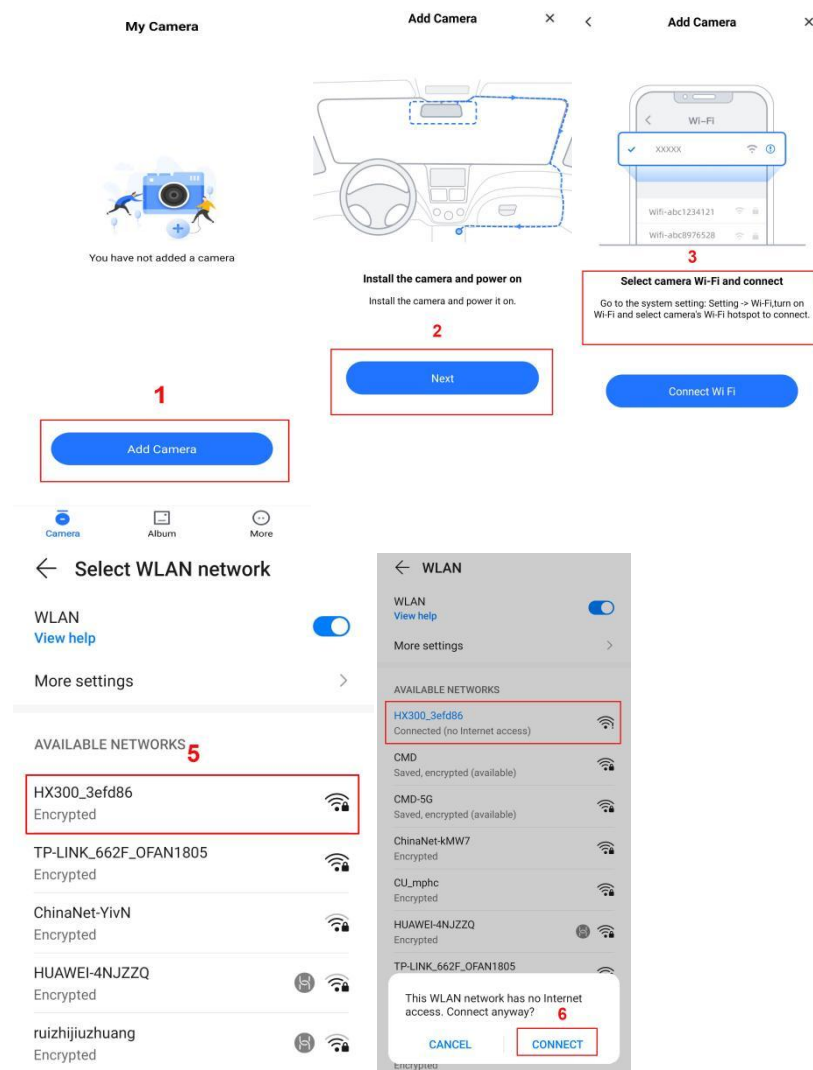
WiFi CONNECTION

A DOWNLOAD APP

Please scan the QR code of the relevant version below to download the APP and install it.



Or search for “**Viidure-Universal Dashcam View**” on Google Play Store and search for “**Viidure**” on App Store.



REMAIN POWER SUPPLY

Please remain the dash cam connected to the power while you are operating the WiFi function, otherwise the dash cam WiFi will become offline.

B AUTHORIZE PERMISSION

Just open the app you've downloaded, and authorize the permissions as below. When opening the app for the first time, please make sure to authorize the App with album, location, WLAN & cellular data, otherwise the app won't work correctly.

REMINDER

Once you connect to **HX300_***** WiFi**, it will say 'No internet connection', which is fine. As long as you keep the WiFi connection, you can still use the APP normally. That's because this WiFi is a hub-type WiFi, which can only be used to transmit data, but has no Internet access function. That is to say, after the WiFi connection, it will show that there is no network. If you want to use the phone network, just disconnect the camera WiFi. The camera will continue to record even when there is no WiFi connected.

Video Recording The dashcam will automatically start recording when you turn on your car's ignition. To manually start or stop recording, press the Record button. The dashcam records video in 1080p resolution at 30 frames per second. You can change the video quality and other settings in the Menu.

G-Sensor and Event Recording The built-in G-sensor detects impacts and automatically saves the current video clip as an event file. You can also manually save an event file by pressing the Emergency button. The event files are protected from being overwritten by loop recording.

Loop Recording The dashcam uses loop recording to overwrite old footage with new footage when the memory card is full. You can set the loop duration in the Menu. We recommend using a Class 10 microSD card with at least 32GB of storage for optimal performance.

Wi-Fi Connectivity To connect your mobile device to the dashcam's Wi-Fi network, search for the network name and enter the password provided in the user manual. Once connected, you can use the dedicated app (available for download in the App Store and Google Play) to view and transfer files wirelessly.

Troubleshooting If you encounter any issues with the dashcam, try the following solutions:

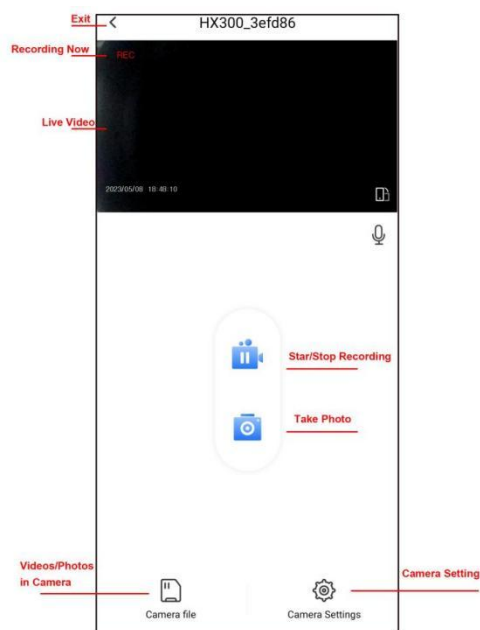
Make sure the dashcam is properly connected to the power source.

Check that the memory card is inserted correctly and has enough free space.

Reset the dashcam by pressing the Reset button.

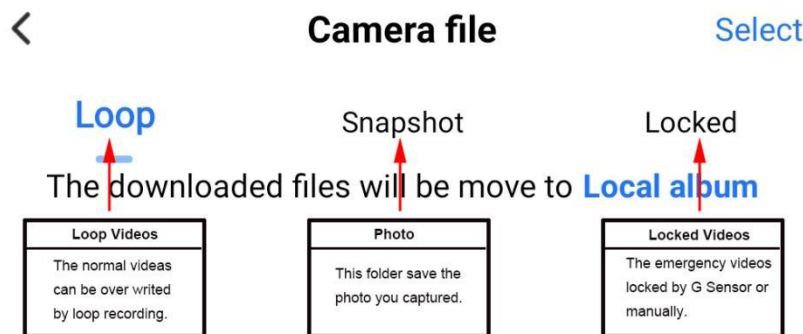
Contact our customer service for further assistance.

APP INTRODUCTION



Check Your Files on App

After you access the camera, you can press 'Camera Files' to check the recorded videos or photos of the dash cams. There are 3 folders for



FOR YOUR BEST EXPERIENCE

- (1) Please download the videos if you need a more detailed and smoothly video, the preview resolution is at only 480P. For a real 1080p video experience, please use a monitor that support 1080p resolution.
- (2) The downloaded videos / photos will be saved in your local albums.

ADVANCED SETTINGS

Collision Sensing

Built-in impact gravitational accelerometer, the video files will be locked and stored automatically when the collision sensor is triggered by emergency shock or collision, ensuring your most important footage is kept protected. To manually lock the video, just press the "Power" button to lock the current video and capture it.

Q&A

Can I Monitor Remotely?

The dash cam does NOT support remote monitor. Because the WiFi signal will not be turned on when the car is not powered on and the valid range of WiFi is 10FT. Therefore, the remote monitor function cannot be realized if both above conditions are not met.

Camera won't connect to the app and says connection failed.

When opening the app for the first time, please make sure to authorize the App with the album, location, WLAN & cellular data, otherwise, the connection will fail. Please contact us for support when you can't get this issue resolved.

Camera keeps saying "abnormal or no storage card" after inserting an sd card or formatting it in the settings

- (1) We suggest to format your SD card on APP, but if you failed to do it on your app, please format the SD card into FAT32 format on PC.
- (2) Make sure you are using the recommended, CLASS 10, U3 Speed, and 64GB max SD card. Otherwise you will get notice of a malfunction.

Can't record 24 hours?

Need buy a mini USB hardwire kit is needed for this function.

Do you have to connect to camera WiFi signal each time you get in the car in order for it to record?

No, the dash cam will automatically record without connecting to your WiFi.

What does it mean when the camera says "Video locked"?

It is caused by the collision sensing. Built-in 3-axis impact gravitational accelerometer, the video files will be locked and stored automatically when the collision sensor is triggered by emergency shock or collision, ensuring your most important footage is kept protected. We suggest you set the collision setting into "LOW" level in camera settings.

The video playback on APP is blurry and freezing.

Due to the limitation of WiFi transmission rate, the videos you watch is only 480P if you don't download the files. So we suggest you download the videos to your phone and watch them in local album. The downloaded video resolution can be up to 4K.

Loop recording doesn't work.

- (1) Please check your SD card version, this loop recording function requires a Class 10, U3 SD card within 64GB, otherwise your videos can't be saved or overwrite.
- (2) Make sure your loop recording is on and format your SD card, then set the G-Sensor at low sensitivity, your SD card may have too much locked videos and loop recording can't overwrite with these videos

No internet connection after connecting the camera WiFi.

Once you connect to HX300_*****2 WiFi, it will say 'No internet connection'. Which is fine. As long as you keep the WiFi connection, you can still use the APP normally. That's because this WiFi is a hub-type WiFi, which can only be used to transmit data, but has no Internet access function. That is to say, after the WiFi connection, it will show that there is no network. But the APP can be used normally

Missing Parts / Need accessories from us.

Don't worry, just email us, we will help you solve it.

SPECIFICATIONS

Wi-Fi connectivity	Yes
G-SENSOR	Built-in
Resolution	1080p at 30fps
Lens angle	170 degrees
Power source	Car charger (included)
Language	English, Spanish, etc
Car Charger	
Power interface	5V/1A
Hardwire Kit Type (for Parking mode)	Only Support 12V/300 mA Hardwire kit Hardwire not included.
App	viidure
Video Format	MOV
Picture Format	JPG
TF Card	Class10(8GB ~ 64GB) TF Card not included.