

POLARIS XPEDITION SUB ENCLOSURE KIT

PART #: UTVS-XPB-ENC-KIT

PARTS LIST:

UTVS Subwoofer Enclosure	x1
2" Seat Lift Bar	x1
Signature Series 10" Subwoofers	x2
Gas Struts	x2
Mounting Hardware:	
L-Bracket	x1
Buttonhead Bolt	x1
Large Hex Bolts	x4
Cap Head Bolt	x4
Large Nuts	x4
Small Lock Nut	x1
Flat Washers	x4
Large Rubber Seal Washers	x4
Small Rubber Seal Washer	x1

RECOMMENDED PRODUCTS:



Scan to watch
the Installation
Video!



UTVstereo
PERFORMANCE AUDIO



Lift the rear seat and remove the
OEM gas strut
*Repeat for other side



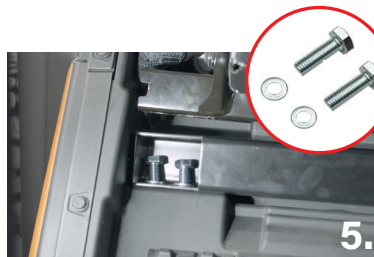
Remove the 2 OEM bolts shown here
*Repeat for other side



Place the 2" seat lift bar under the
seat with the notch facing the back of
the vehicle



Add the UTV Stereo gas strut to the
seat as shown
*Repeat for other side



Place the supplied bolts with a
washer into the lower part of the seat
lift bar as shown
*Repeat for other side



Place the OEM bolts through the top of
the seat mount and into the top of the seat
lift bar and add a nut to each. Tighten all
bolts securely
*Repeat for other side



Place the subwoofer into the
enclosure and pre-drill the holes as
shown
*Repeat for other side



Run your subwoofer wire through
the rubber grommet
*Repeat for other side



Remove the 5 OEM screws in the
floor shown here. Save the long
screw for next step



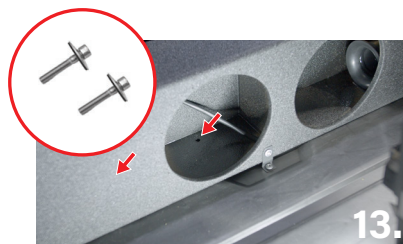
Place the OEM bolt through the bracket as
shown and secure it to the floor
*Leave loose until the enclosure is in vehicle



Place the enclosure into the vehicle
and align the hole in the enclosure
with the bracket



Use the included buttonhead bolt
with a rubber seal washer and nut to
secure the bracket to the enclosure



Use the included hardware to secure
the enclosure to the floor
(2 on each side)
*Repeat for other side



You can now tighten all hardware



Wire your subwoofer for your specific
impedance
*Repeat for other side



Place the subwoofer into the vehicle
and secure using the hardware
included with the subwoofer
*Repeat for other side