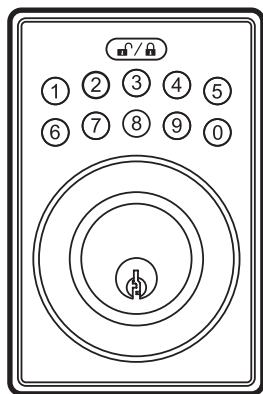
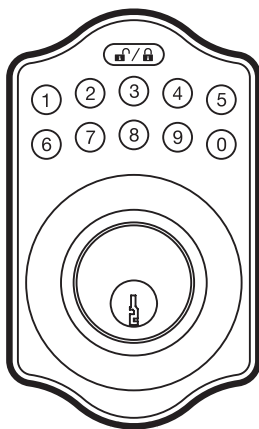


amazonbasics



## Electronic Keypad Deadbolt - Keyed Entry

Cerrojo con Teclado Electrónico - Entrada con Clave

Pêne Dormant à Clavier Électronique - Porte d'Entrée Munie de Clé

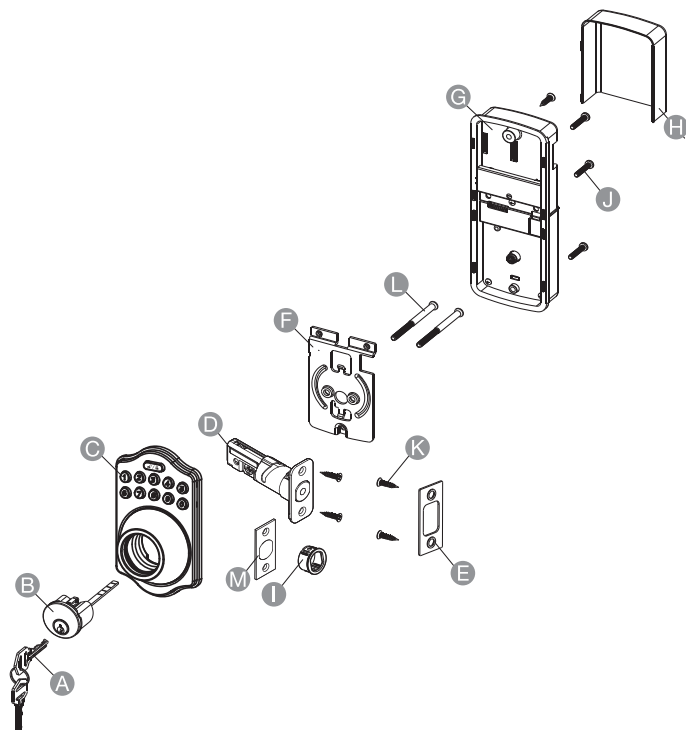
B07J4VHVN5, B07J4HXTWJ, B07J4VQCMF, B07J4HXTWT,  
B07J4VLVPF

■	English .....	3
---	---------------	---

# Welcome Guide • English

## Contents:

Before getting started, ensure the package contains the following components:



English

Español

Français

- |                                      |  |
|--------------------------------------|--|
| <b>A</b> Key x2                      | <b>H</b> Battery cover x1              |
| <b>B</b> Cylinder x1                 | <b>I</b> Drive-in sleeve (optional) x1 |
| <b>C</b> Deadbolt keypad assembly x1 | <b>J</b> Machine screws x3             |
| <b>D</b> Deadbolt latch x1           | <b>K</b> Wood screws x5                |
| <b>E</b> Strike plate x1             | <b>L</b> Deadbolt chassis screws x2    |
| <b>F</b> Mounting plate x1           | <b>M</b> Square corner latch x1        |
| <b>G</b> Receiver assembly x1        |  |

#### You will need



Screwdriver



Tape measure

## IMPORTANT SAFEGUARDS



Read these instructions carefully and retain them for future use. If this product is passed to a third party, then these instructions must be included.

When using electrical appliances, basic safety precautions should always be followed to reduce the risk of fire, electric shock, and/or injury to persons including the following:

- Do not use an electric screwdriver during installation.
- This manufacturer advises that no lock can provide complete security by itself.
- This lock may be defeated by forcible or technical means, or evaded by entry elsewhere on the property.
- No lock can substitute for caution, awareness of your environment, and common sense.
- The builder's hardware is available in multiple performance grades to suit the application.
- In order to enhance security and reduce risk, you should consult a qualified locksmith or other security professionals.
- Do not use any chemical liquid or lubricating oil with additives to clean the lock body. It will damage the surface or even the mainboard.

# Before First Use

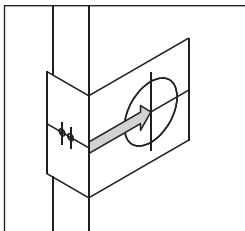
- Check for transport damage.

**DANGER**

**Risk of suffocation!** Keep any packaging materials away from children – these materials are a potential source of danger, e.g. suffocation.

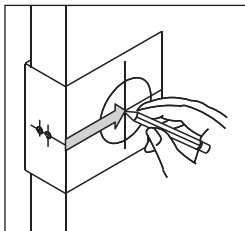
## Installation

### Step 1: Determine Backset



- The backset is the distance from the door edge to the center of the hole on the door face.
- The adjustable latch fits both backset of 2-3/8" (60 mm) and 2-3/4" (70 mm).

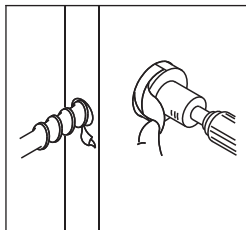
### Step 2: Mark the Door with Template



- Select the desired height and backset on the door face. Use the template as an indication to mark the center of the circle on the door face and the center of the door edge.

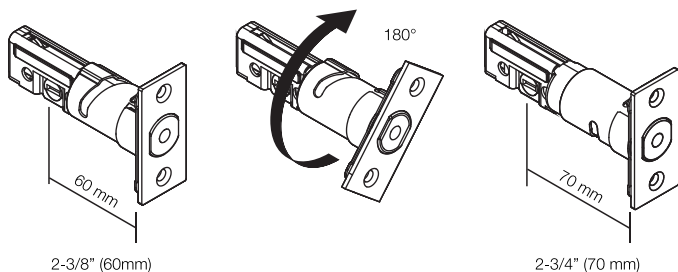
# Installation

## Step 3: Drill Holes



- Use the marks as a guide to drill a hole  $\varnothing 2\text{-}1/8"$  (54 mm) through the door face for the lockset, then a hole of  $\varnothing 1"$  (25.4 mm) for the latch.

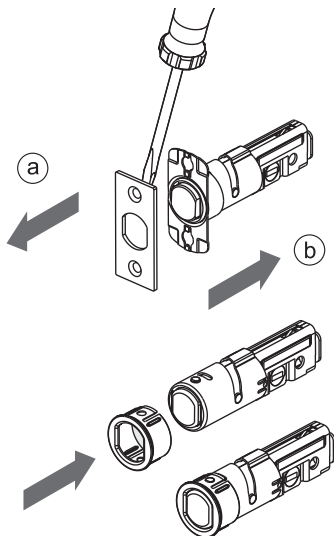
## Step 4 (optional): Latch Adjustment



- Determine if the latch needs to be adjusted to the 2-3/4" (70 mm) backset.
- To adjust, rotate the latch until it stops.
- Reverse the direction to return to the 2-3/8" (60 mm) backset.

# Installation

## Step 5 (optional): Replace Face Plate



Drive-in latch

- Determine which latch-mounting method will be used and make necessary adjustments.
  - No adjustment is required for the square latch face plate.
- a. Use a flat screwdriver to separate the face plate.
- b. Snap the selected latch face onto the back plate.

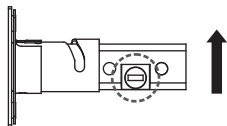
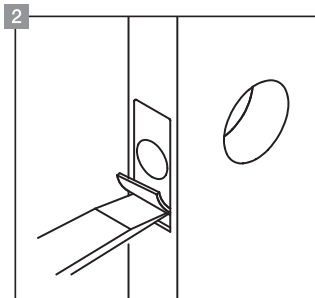
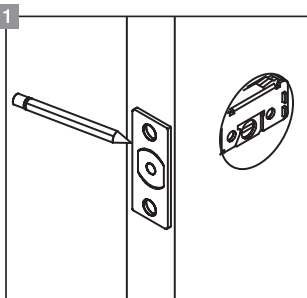
### Drive-in Installation

- Remove the original latch face plate.

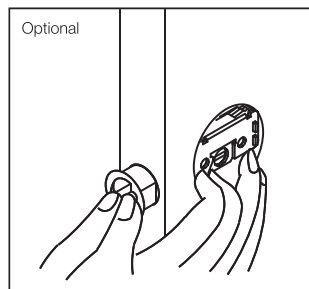
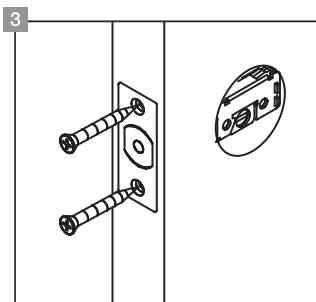
Align the drive-in sleeve as illustrated and snap it into the latch case.

# Installation

## Step 6: Install Latch



You need to stay this way upward when inserting the latch



1. Insert the latch and ensure it is parallel to the door face. Mark the outline of the face plate, then take out the latch.

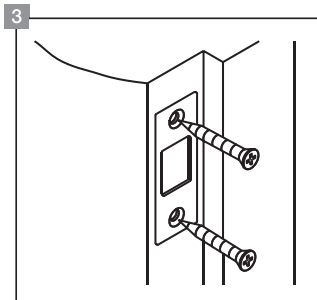
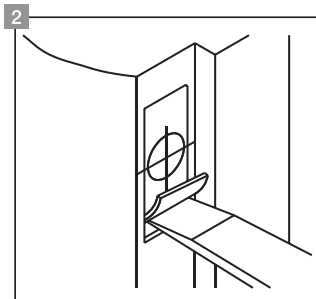
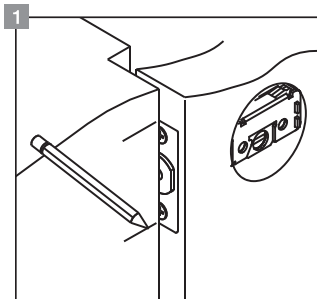


2. Chisel 5/32" (4 mm) deep along the outline to allow the face plate to be aligned with the door edge.
3. Insert the latch into the door. Use 2 wood screws to secure the latch. Please do not fully tighten the screws until the lock is completely installed.

#### Optional

- Install drive-in latch. Drive the latch into the hole on the edge of the door.

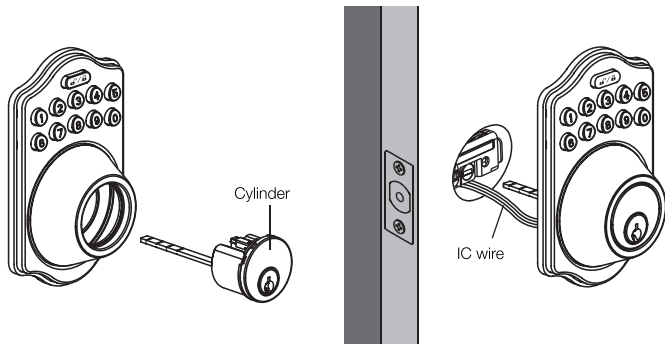
### Step 7: Install Strike



1. To identify the center of the strike: close the door to position the latch bolt against the door frame. Mark the center line on the door frame at exactly opposite of the latch hole in the door edge.

2. Measure one-half of the door thickness from the door stop and vertically mark the center line of the strike. Drill a 1" (25.4 mm) hole, 1" (25.4 mm) deep at the intersection of the horizontal and vertical lines of the strike. Chisel 5/64" (2 mm) deep along the strike outline to allow the strike to be aligned with the door frame.
3. Install the strike plate into your door frame and tighten with wood screws.

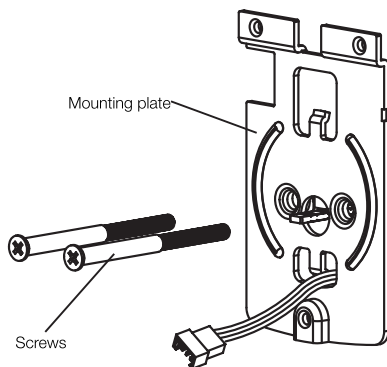
## Step 8: Install Keypad Assembly



- Install the cylinder into the deadbolt keypad assembly with tailpiece in horizontal position inserted through the hub of the latch.
- Pass the IC wire under the latch to the interior side of the door.

# Installation

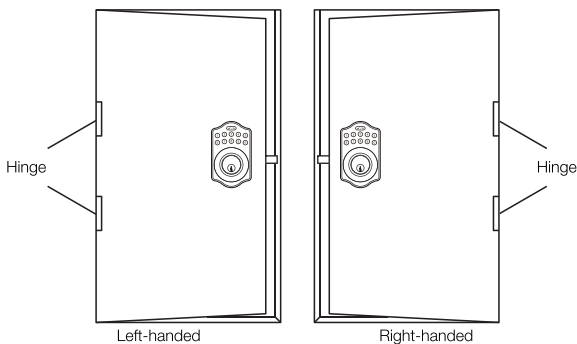
## Step 9: Install Inside Mounting Plate



- Pass the IC wire through the wire hole of the mounting plate. Fix the mounting plate with screws. If the outside lock assembly is lopsided, please loosen the screws to adjust its position and tighten the screws again.

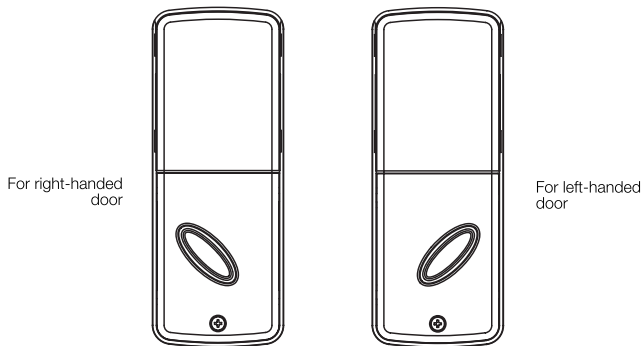
# Installation

## Step 10: Identify Door Handing



- Face the door from the outside. The door is left-handed if the hinges are on the left side of the door, whereas the door is right-handed if the hinges are on the right side of the door.

## Step 11: Adjust Thumb Turn Piece

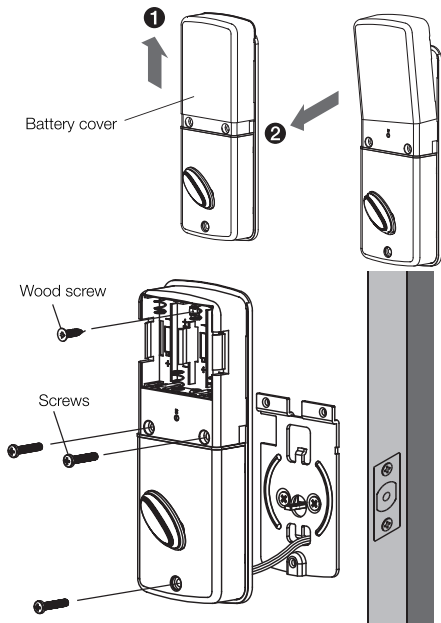


- Rotate the thumb turn piece to the left at 45 degrees for right-handed doors.
- Rotate the thumb turn piece to the right at 45 degrees for left-handed doors.

**⚠ NOTICE**

The thumb turn piece is opposite of the latching side.

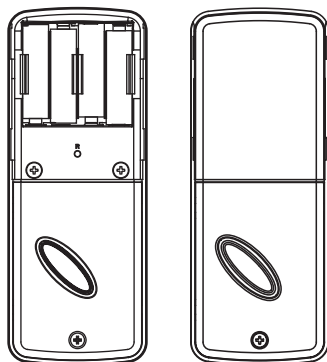
## Step 12: Install Receiver Module



- Remove the battery cover (push it up first then pull it out).
- Connect the IC wire into the back of the receiver module.
- Ensure that the deadbolt tailpiece is engaged with the turn piece, then attach the receiver module to the door with a screws.
- Use the optional wood screw to secure the receiver module to wood doors only.

# Installation

## Step 13: Insert Batteries

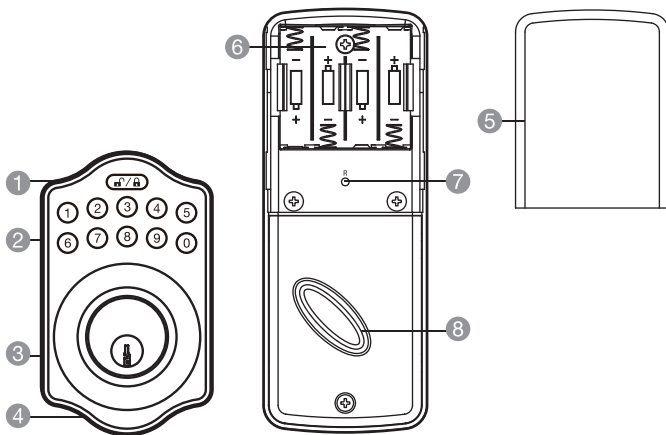


- Insert 4 (AA) 1.5 V alkaline batteries and slide the battery cover back onto the receiver module.

### NOTICE

Alkaline batteries are recommended in order to stabilize the power supply. If you don't use alkaline, battery performance will be drastically reduced.

# Operational Interface



- |   |                    |   |                  |
|---|--------------------|---|------------------|
| 1 | Programming button | 5 | Battery lid      |
| 2 | Number buttons     | 6 | Battery holder   |
| 3 | Cylinder           | 7 | R button (reset) |
| 4 | Washer             | 8 | Turn piece       |

## Operation

- Keep the door open while programming to avoid being accidentally locked out.
- The lock contains one factory preset user code, but can be programmed to store up to a total of ten additional unique user codes.
- Codes can be added and deleted at any time.
- For first-time programming, use the factory default programming code.
- It is recommended to change the default programming code and default user code right after you install the lock.
- Indicates that unlocking was successful.

## Operation Indicator Sounds and Lights

Sounds	Lights	Meaning
1 beep	Flashes green once	Successful operation
2 long beeps	Flashes green twice	Successful programming
3 beeps	Flashes red 3 times	Operation error
5 beeps	Flashes red 5 times	Code input error; system shuts down for 45 min
10 rapid beeps	Flashes red 10 times	Low battery power
3 long beeps	Flashes orange 3 times	Default settings restored
	Flashes orange slowly	In programming mode

Default programming code (PC): 0000

Default user code (UC): 1234

Your new programming code (PC) \_\_\_\_\_

Your new user code (UC) \_\_\_\_\_

The programming code and user code cannot be identical.

The lock will temporarily freeze if unauthorized codes are entered over 5 times.

The system will unfreeze after 45 seconds.

## Door Handing Identification Process

- The lock needs to know if your door is right-handed or left-handed.



Do this first

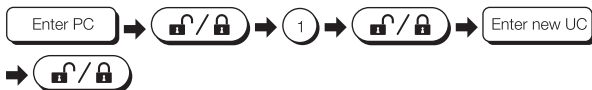


## Change Programming Code





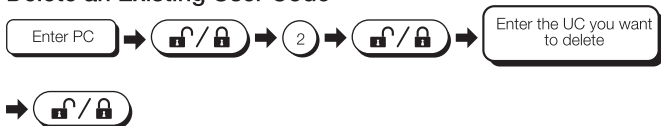
## Add New User Code



### NOTICE

Up to 10 sets of user codes can be saved. User codes should be 4–10 digits in length.

## Delete an Existing User Code



## Delete All User Codes at Once



### NOTICE

Auto-lock and keypad locking functions will be invalid when user codes are deleted. The lock can only be operated by key during this time.

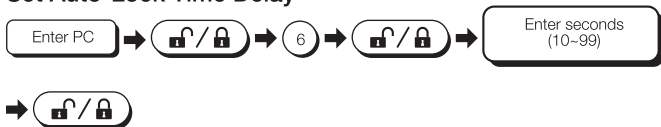
## Turn Auto-Lock On/Off



### NOTICE

The preset delay-time is 30 seconds, you can change the time by following instructions #7. Repeat the steps in #6 to cancel the auto-lock function.

## Set Auto-Lock Time Delay



### NOTICE

10–99 seconds delay time available.

## Turn Mute On/Off



### ⚠ NOTICE

Repeat the steps in #8 to turn the beeper On/Off. LED illumination is still functioning when it is in mute, but there will be no alarms.

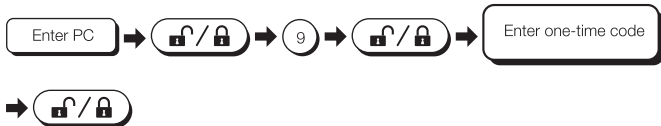
## Enable/Disable All User Codes



### ⚠ NOTICE

Auto-lock and keypad locking functions will be invalid when user codes are disabled. The lock can only be operated by key during this time. Repeat the steps to enable the user codes again.

## Create a One-Time User Code 4-10 Digits Long



### ⚠ NOTICE

The one-time user code will automatically be canceled after it is used.

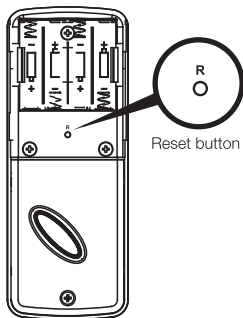
## Restore Default Settings

Press 

### ⚠ NOTICE

Press the button for more than 5 seconds. The programming is reset to the original factory codes once you hear 3 long beeps.

After restoring the default settings, you must run the door handing identifying process (#1) again before programming any other functions.



# Troubleshooting

Issue	Cause	Solution
After installing the lockset and batteries, the door can't be locked and three short beeps are emitted when you press the programming button.	The door handing identification process isn't complete yet.	Refer to step 1.
You have installed the lockset and batteries, but you still get no response when you press any button.	Batteries were installed incorrectly.	Check to see if the battery polarities have been reversed or if the battery is dead. If so, reinstall or change the battery. If not, please check to see if the cable is properly connected.
When you are in the door-handing identifying process, the red light flashes three times, and there are three short beeps.	Wrong door handing or the door handing stored in the memory was changed.	Press the R button to restore the system to factory default setting and re-execute door-handing identifying process (Refer to step 1)
Although you succeeded in the first execution of the door-handing identifying process, the latch still doesn't work. (i.e. You can feel the motor attempting to run, but the latch bolt is stuck, and the turnpiece can't be rotated.)	Low battery.	Replace with new alkaline batteries.
Although the electronic deadbolt has been functioning normally, the latch bolt suddenly locks up, and the turnpiece inside can't be rotated, not even with a key.	The deadbolt latch is stuck due to a warped door or misaligned door.	First, take out one battery, then press any button on the front panel for electric discharge, and put the battery back in. The latch bolt will automatically re-detect its position. Note: If the latch gets stuck frequently, please check and fix the alignment of the deadbolt latch and strike plate.

Issue	Cause	Solution
The door can be locked normally, but when you try to unlock it, you hear three short beeps and the lock won't unlock when you enter the user code and press the programming button.	The sensor did not detect the correct position of the bolt.	Unlock the door with the key and re-program the unit. If the problem persists, call our customer service department.
While the door is locked, you hear the latch bolt coming out when you press the gatehouse to lock the door; however, three short beeps are emitted. Conversely, while the door is open, no beeps are emitted when locking the latch bolt.	<ol style="list-style-type: none"> <li>1. The depth of the latch bolt hole is insufficient.</li> <li>2. The latch bolt is not aimed at the opening of the strike.</li> </ol>	<ol style="list-style-type: none"> <li>1. Dig the latch bolt hole used for the strike a little deeper. The minimum depth is 1" (2,5 cm).</li> <li>2. Adjust the strike to the appropriate position.</li> </ol>

## Battery Disposal



Do not dispose of used batteries with your household waste. Take them to an appropriate disposal/collection site.

# Warranty Information

To obtain a copy of the warranty for this product:



Visit [amazon.com/AmazonBasics/Warranty](https://amazon.com/AmazonBasics/Warranty)

— or —



Contact Customer Service at 1-866-216-1072

## Feedback

### Love it? Hate it?

Let us know with a customer review.

AmazonBasics is committed to delivering customer-driven products that live up to your high standards. We encourage you to write a review sharing your experiences with the product.

Please visit: [amazon.com/review/review-your-purchases#](https://amazon.com/review/review-your-purchases#)



For further services:



Visit [amazon.com/gp/help/customer/contact-us](https://amazon.com/gp/help/customer/contact-us)

— or —



Contact Customer Service at 1-866-216-1072

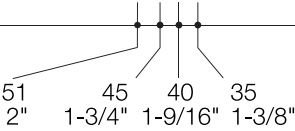


[amazon.com/AmazonBasics](https://amazon.com/AmazonBasics)

MADE IN TAIWAN

# Template

Fold on the dotted line and fit on the door edge.

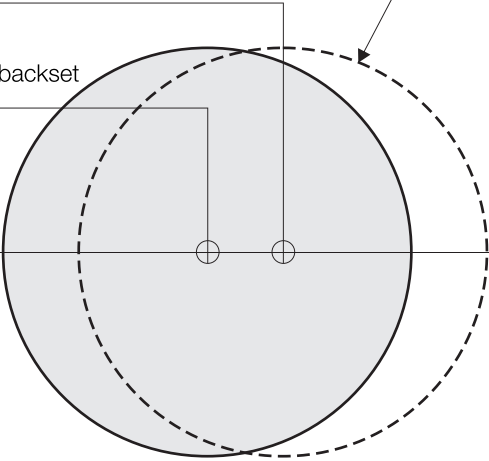


Make a 1" (25.4 mm) hole at the center of the door edge.

For a 2-3/4" (70 mm) backset

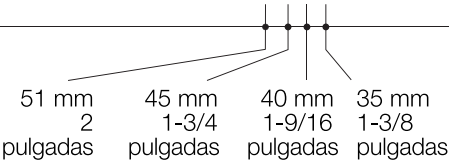
For a 2-3/8" (60 mm) backset

Fits 2-1/8" (54 mm)



# Plantilla

Doble por la línea punteada y encájela en el borde de la puerta.

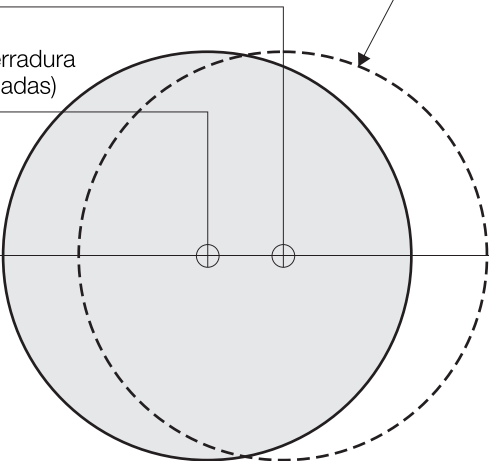


Taladre un agujero de 25,4 mm (1 pulgada) en el centro del borde de la puerta.

Para un agujero de cerradura de 70 mm (2-3/4 pulgadas)

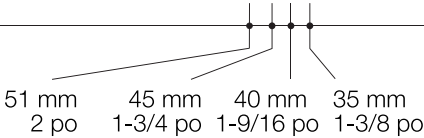
Para un agujero de cerradura de 60 mm (2-3/8 pulgadas)

Para 54 mm (2-1/8 pulgadas)



# Gabarit

Pliez-le sur la ligne pointillée, puis placez-le sur le rebord de la porte.



Percez un trou de 25,4 mm (1 po) au centre du rebord de la porte.

Pour un retrait de 70 mm (2-3/4 po)

Pour un retrait de 60 mm (2-3/8 po)

Correspond à 54 mm (2-1/8 po)

