


Artisan™



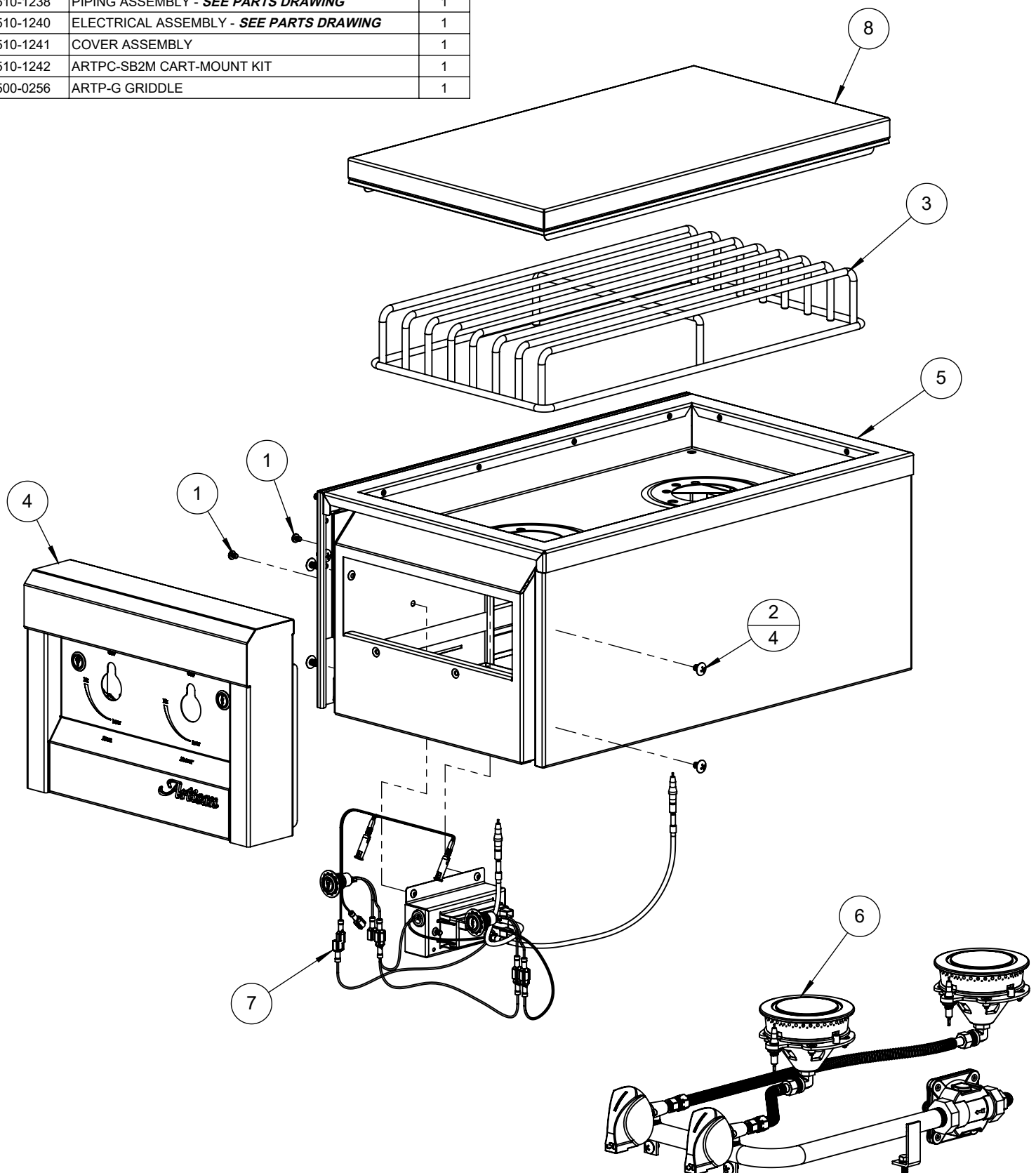
ARTP-SB2

BUILT-IN DUAL SIDE BURNER UNIT

 SUPERIOR EQUIPMENT SOLUTIONS 7033 EAST SLAUSON AVENUE COMMERCE, CA. 90040	THE INFORMATION CONTAINED IN THIS DRAWING IS THE SOLE PROPERTY OF SUPERIOR EQUIPMENT SOLUTIONS INC. ANY REPRODUCTION IN PART OR AS A WHOLE WITHOUT WRITTEN PERMISSION FROM SUPERIOR EQUIPMENT SOLUTIONS, INC. IS PROHIBITED.	PROJECT TITLE: ARTP-SB2 PART MANUAL	DRAWING NO.: 500-0229 MANUAL
	DRAWN BY: ADRIAN CRISCI CREATED: 8/22/2018 10:17:30 AM	DRAWING TITLE:	

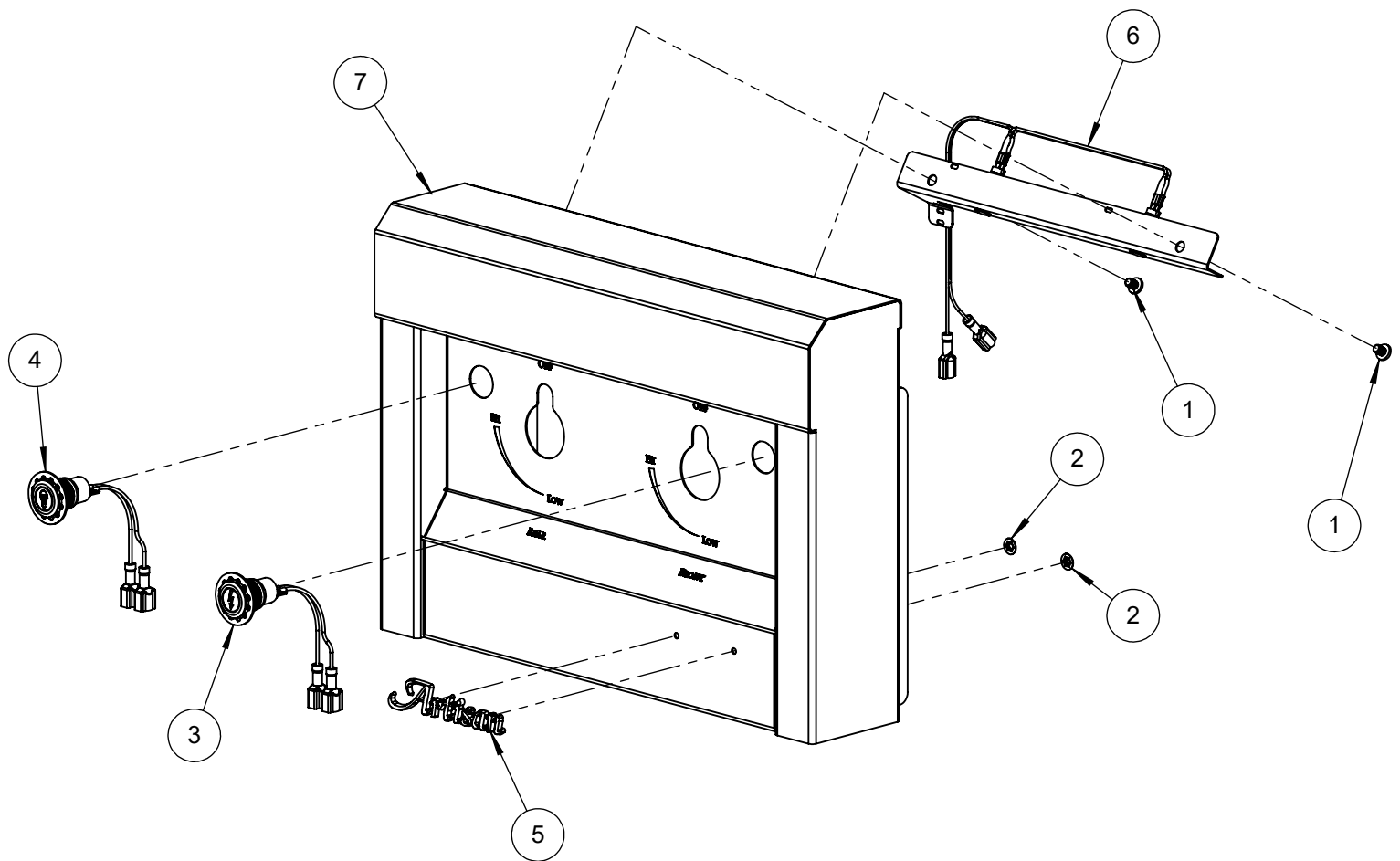
BILL OF MATERIALS

NO.	PART #	DESCRIPTION	QTY.
1	200-0082	10-32 X 1/4 - PAN HEAD - PHILIPS SCREW	2
2	200-0086	SCREW 1/4-20 X 3/8: - TRUSS HEAD PHILIPS	4
3	290-0069	GRATE - DUAL SIDE BURNER	1
4	510-1236	FRONT PANEL ASSEMBLY - <i>SEE PARTS DRAWING</i>	1
5	510-1237	TOP ASSEMBLY	1
6	510-1238	PIPING ASSEMBLY - <i>SEE PARTS DRAWING</i>	1
7	510-1240	ELECTRICAL ASSEMBLY - <i>SEE PARTS DRAWING</i>	1
8	510-1241	COVER ASSEMBLY	1
9	510-1242	ARTPC-SB2M CART-MOUNT KIT	1
10	500-0256	ARTP-G GRIDDLE	1



BILL OF MATERIAL			
NO.	PART #	DESCRIPTION	QTY.
1	200-0082	10-32 X 1/4 - PAN HEAD - PHILIPS SCREW	2
2	200-0093	WASHER - PUSH LOCK 1/8" ID X 3/8" OD (LOGO)	2
3	210-0583	SWITCH - IGNITION - MOMENTARY [ON]/OFF	1
4	210-0584	SWITCH - LIGHT - LATCHING [ON/OFF]	1
5	290-0356	ARTISAN LOGO	1
6	510-1239	LIGHT ASSEMBLY - SEE PARTS IN ASSEMBLY 510-1240 M1	1
7	510-1245	FRONT ASSEMBLY - WELDED PARTS	1

FOR REFERENCE ONLY SEE PARTS IN
ELECTRICAL ASSEMBLY 510-1240 M1

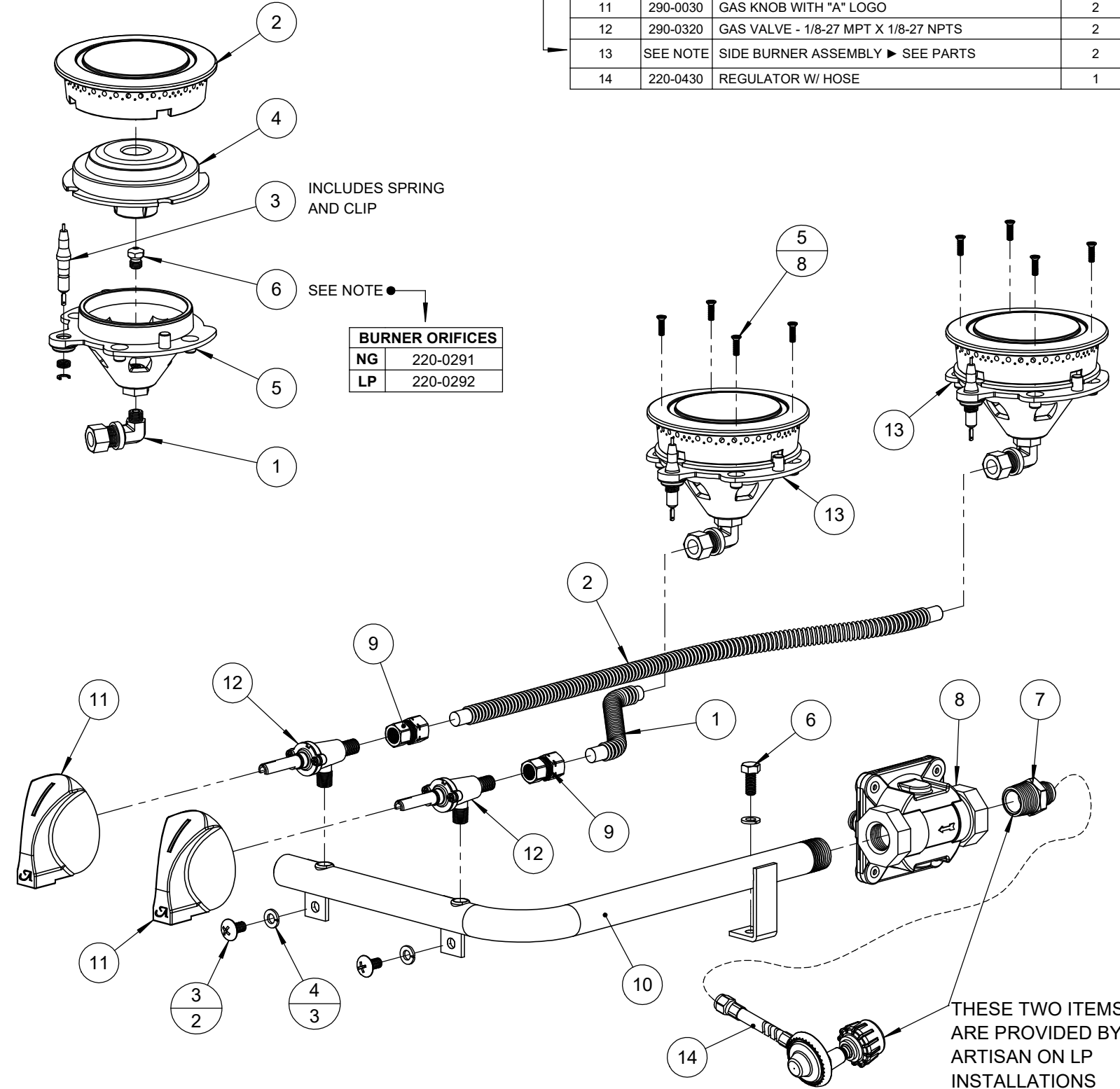


BILL OF MATERIALS - SIDE BURNER ONLY

NO.	PART #	DESCRIPTION	QTY
1	220-0293	ELBOW, 1/8 NPT x 3/8" COMP, BRASS (SIDE BURNER)	1
2	290-0072	SIDE BURNER - EXTERIOR CAP	1
3	290-0074	ELECTRODE ASSEMBLY	1
4	290-0222	SIDE BURNER - INNER CAP	1
5	290-0344	SIDE BURNER BODY	1
6	SEE NOTE	SIDE BURNER ORIFICE	1

BILL OF MATERIALS - PIPING ASSEMBLY

NO.	PART #	DESCRIPTION	QTY
1	100-0917	3/8" Ø X 8" FLEX GAS LINE	1
2	100-0941	3/8"Ø X 24" FLEX GAS LINE	1
3	200-0057	SCRW 1/4-20 X 1/2" - TRUSS HEAD PHILIPS	2
4	200-0087	WASHER, 1/4" - SPRING LOCK - SS	3
5	200-0098	SCREW 6-32 X 1/2" - FLAT HEAD 82° - PHILIPS	8
6	200-0219	SCREW 1/4-20 UNC X 5/8 LONG - HEX HD - SS	1
7	220-0275	NIPPLE, 1/2" NPT X 3/8" OD 45° FLARE, BRASS	1
8	220-0280	REGULATOR GAS - MAXITROL RV48CL440002, 5" w.c.	1
9	220-0438	COUPLING, 1/8-27 NPT-Female X 3/8" COMP., BRASS	2
10	220-0487	GAS MANIFOLD - DUAL BURNER	1
11	290-0030	GAS KNOB WITH "A" LOGO	2
12	290-0320	GAS VALVE - 1/8-27 MPT X 1/8-27 NPTS	2
13	SEE NOTE	SIDE BURNER ASSEMBLY ► SEE PARTS	2
14	220-0430	REGULATOR W/ HOSE	1



BILL OF MATERIALS

NO.	PART #	DESCRIPTION	QTY
1	100-3082	J-BOX	1
2	200-0004	GROMMET 9/16" OD, 1/16" MAT'L, 7/16" ID	1
3	200-0009	HEYCO STRESS RELIEF BUSHING # 1200 SR 6N3-4	1
4	200-0267	10-32 X 1/2 - PAN HEAD - PHILLIPS SCREW	2
5	200-0320	SCREW 8-32 x 3/8 - GROUNDING SCREW	1
6	210-0248	SIDE BURNER ELECTRODE A1202-E	2
7	210-0464	IGNITER MODULE (2 POINTS)	1
8	210-0499	NEMA 5-15 - 90° PLUG 18/3 EXTENSION CORD	1
9	210-0583	SWITCH - IGNITION - MOMENTARY [ON]/OFF	1
10	210-0584	SWITCH - LIGHT - LATCHING [ON/OFF]	1
11	210-0624	LIGHT - BLUE LED - 8mm Ø - 110 VAC	2
12	210-0675	LIGHT HARNESS	1
13	210-0677	ELECTRICAL WIRING KIT	1
14	210-0678	IGNITER WIRING KIT	1

