

NO.668-A9/A9C/A9L



DRONE

2.4 GHz 6-AXIS GYRO

Quadcopter with six-axis gyro built in

1.IMPORTANT NOTES

- This product is NOT A TOY! it may cause damage by use it wrongly.
- Please use this product follow by this instruction And please do not disassemble this product by yourself.
- This flying model requires practice before you use it. Please use the product follow by this instruction and please do not disassembly the product. Otherwise, manufacturer shall not be responsible to any damage of the product or injury to any person.

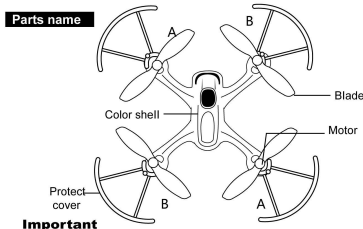
2.SAFETY NOTES

CAUTION Fly only in safe areas away from other people. Do not operate R/C aircraft within the vicinity of crowds or people. R/C aircraft are prone to accidents, failures for their actions and damage or injury occurred during Pilot error and radio interference. pilots are responsible for their actions and damage or injury occurred during the operation or as a result of R/C aircraft models.

FORBIDDEN Special despecial design for indoor & outdoor please keep it away from obstacle. This product is suitable for indoor(the wind grade should be no more than 4), please choose a place without obstacle and keep distance from crowd and pets don't play it under unsafely, for instance, heat source, heat source wire or electronic power source in order not to be damaged by collision landing, entanglement and lead to a fire, electric shock and cause losses of lives and property.

WARNING:Obtain the assistance of an experienced pilot
The products are suitable for more than 14 years old age, at the beginning it will have some certain difficulty in learning, suggestion guidance by experienced when playing.

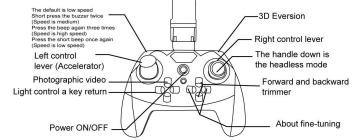
Parts name



Important

1. the fan must correspond to the fuselage to be replaced by relative position change. Blades need to be installed on A seat, blades B need to be installed in position B.
2. the fan when flying A clockwise, blades B counter-clockwise rotation

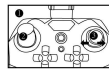
Introduction of transmitter



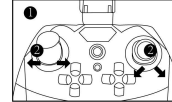
Two rocker. Meanwhile, to the lower right corner for about 4 seconds to play in the end let go, let rocker gyros. After the aircraft stopped at the bottom of the light starts flashing, on behalf of the calibration was successful.

Low pressure Description: When four-axis aircraft during flight if the lights start flashing at the bottom axis described the aircraft as soon as the battery is low to the ground and the aircraft flew back, remove the battery charged.

Product features: Forward / backward / left / right / hover / roll / fly left and right side / headless mode / a key return/Video camera (optional) / WIFI real-time transmission (optional)



1. High-speed rotation of Operation:
Step 1 position key transferred to third gear.
Step 2 left throttle stick to the middle position until after the aircraft flew off the ground about one meter away. Joystick hit the left or right of the middle positions intermediate position. Throttle height can be increased or decreased. You can achieve the high-speed rotation.



Assembled remote controller

Open the battery cover on the back of remote controller. Insert four #5 alkaline batteries in accordance with the instructions on battery box. (Battery should be purchased separately, old and new or different types of batteries shouldn't be mixed.)



Battery safety instructions:

- Different types of batteries or old and new batteries should not mix;
- Non-rechargeable batteries cannot be charged;
- Only use the provided charger, use charge;
- Follow the polarity correctly. Install batteries power supplies. Terminals shall not be short-circuited;
- Non-rechargeable batteries cannot be charged; rechargeable batteries can only be under the supervision of re-charge;
- Do not use rechargeable battery overcharging when charging;
- Exhausted batteries to be saved from the fire and leakage;
- Used batteries according to the environmental protection agency.

Recharge the quadcopter battery

Insert the factory equipped charger plug into the power; the recharger indicator is green, then connect the product battery; the indicator will turn to red; it indicates the battery is under recharging; when the indicator turns to green again under the recharge status, that means recharge finish and the battery is full. Whole recharge time will be around 30 minutes. Press 3D mode key; the transmitter indicator turns on; fly the quadcopter to 2 meters high and press the right control stick, to any direction quickly to its bottom and release it, the quadcopter will roll to the direction corresponding to the right control stick, if need to quit then press the key again.



Preparation before taking off

1. Please operate in spacious indoor or outdoor without rain or snow, and wind power should be below 4 grade, be away from people, animals and obstacle.
2. Insert the Li-po battery provided by factory into quadcopter, the indication light of the quadcopter is flashing, then put the quadcopter on leveled place and wait for frequency adjustment.
3. Pull the acceleration lever to the lowest, turn on the remote control's switchover, push the acceleration lever to the highest, then pull it back to lowest again. There will be 'd' sound and the quadcopter indication light turns on, then the frequency adjustment is completed and it's ready for taking off.

- TIPS:** When matching signal keep the quadcopter on horizontal position for faster matching and starting a stable light.
2. Indoor's flight please select spacious place without obstacle, pets and people for flight.
 3. Outdoor's flight please select a warm sunny no wind or breeze for flight.
 4. The control distance is about 60-80 meters of the aircraft.
 5. Do not fly this aircraft when the fuselage plug power plug disconnected battery to avoid battery damage.

- Notes:** 1. Don't fly in the extreme weather and the model maybe damaged in extreme heat or cold weather which will affect flight effect.
2. Don't fly in the strong wind weather which will cause limitations to the flight or hinder your flight control in the case of strong wind, your aircraft will vanish or damage.

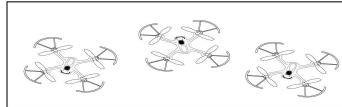
Flying controlled and fine tuning

Ascend /descend	When the left operating lever push up or pull down, the quadcopter is ascending or descending.	
Turning	When the left operating lever push left or right, the quadcopter turns left or right.	
Forward /backward	When the right operating lever push up/down, the quadcopter goes forth/back.	
Side Fly	When the right operating lever push left or right, the quadcopter goes to the left or right.	
Side-fly fine tuning	When the quadcopter is hovering and the quadcopter is deviate to left or right, then turn the side-fly fine tuning to right or left until the quadcopter keeps balance.	
Forward backward fine tuning	When the quadcopter is hovering and the quadcopter is deviate to forward or backward, turn the forward/backward fine tuning up or down until it keeps balance.	

Headless mode: In no open mode, the aircraft took off in the direction of East and West position, if the rear of the aircraft to take off this south, a tube aircraft flying far, what direction to go, then pull back forward, backward / left and right side joystick to fly the aircraft will fly back to retreat south. (Vehicle chassis have ON-OFF of the back)

A return key: Press a button to return the vehicle will automatically fly back to the starting position at takeoff.

3D roll over



Press 3D mode key, the transmitter indicator turns on, fly the quadcopter to 2 meters high and press the right control stick to any direction quickly to its bottom and release it, the quadcopter will roll to the direction corresponding to the right control stick, if need to quit then press the key again.

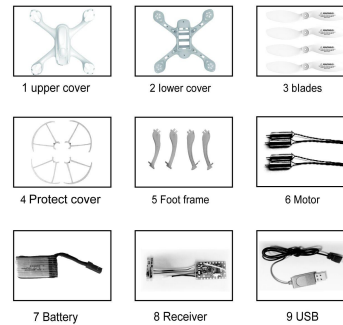
Camera led status description:

1. When the bottom camera kit blue indicator light, red LED flashes, then the vehicle has power but no SD card or the SD card is not inserted.
2. Photo button the remote control aircraft camera box red blinking lights on the bottom, then the aircraft take a photo and automatically stored in SD card photo.
3. Video button the remote control aircraft camera boxes on the bottom red light stay lit, it means that aircraft are video, photo/video button then press the remote control aircraft camera boxes on the bottom red led is not lit, it means that the fly exit the camera status, and automatically stored in SD card video.
4. Power off the aircraft, take out SD card through the card reader connected to the computer or SD card directly your mobile phone, using the corresponding format player to play videos and view photos.

Common problem and solution instruction:

The problem	Reason	Countermeasures
The indication light of the quadcopter is flashing and without reaction when operated	1. Frequency modulation between the quadcopter and remote control is not operated correctly. 2. Insufficient battery power	1. Refer to the Preparation for taking off, and re-modulate the frequency. 2. Recharge the battery
The quadcopter's blades turn around but the quadcopter cannot take off	1. Insufficient battery power 2. The blades distorted	1. Recharge the battery 2. Replace the blades
The quadcopter shakes hardly	The blades distorted	Replace the blades
The fine tuning button are all on but the quadcopter still couldn't keep balance	1. The blades distorted 2. The motor doesn't work properly	1. Replace the blades 2. Replace the motor
The quadcopter becomes out of control after crashing	Three-axis acceleration sensor lose its balance after crashing	Put the quadcopter on the ground for 5-10 seconds

Accessories(choose to buy)



CAUTION

Make sure that no people or obstructions in the vicinity. You must first practice hovering for flying safety. This is a basic flight action. (Hovering means keeping the flight vehicle in mid air in a fixed position) Please stand behind are about 2 metres of the vehicles flying.

-Headless mode:

In headless mode, the orientation of the aircraft to take off in all directions, if the aircraft behind when it took off for the South. No matter how far the flight of aircraft, go to any direction pull back forward, backward/left-side flight joystick flight will be back to fly back to the South. (Behind the vehicle chassis)

A key to returning: press key to return to flight, aircraft will fly back to where started to take off.