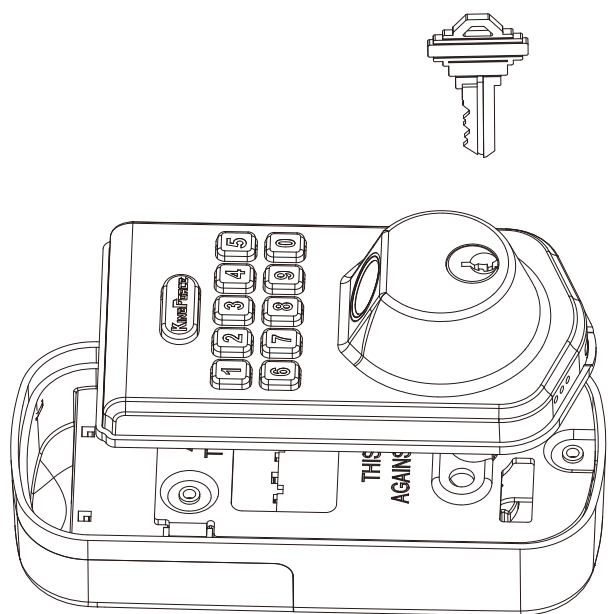


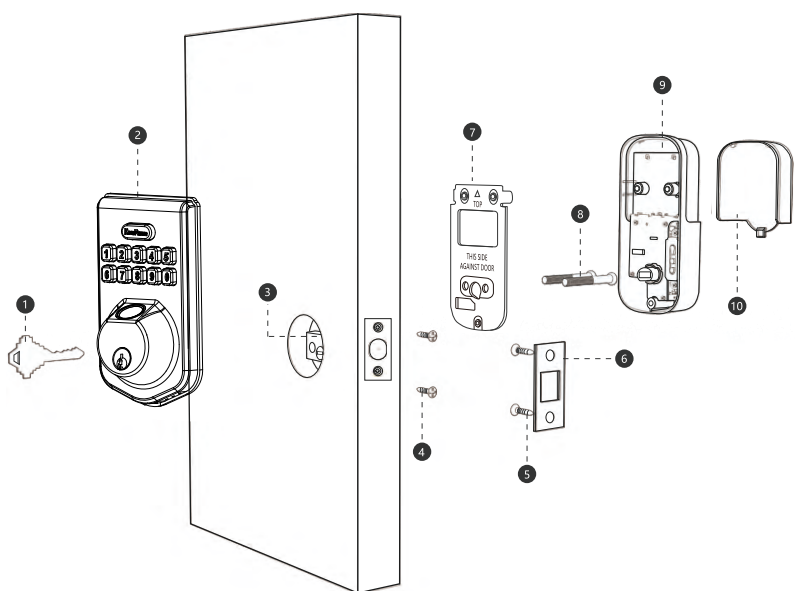
Installation & Operation Guide

Model: D1F

This guide contains important information about your lock. Please keep this guide.



Overall



- 1 Backup Key
- 2 Exterior Assembly
- 3 Latch
- 4 Screw
- 5 Screw
- 6 Striking Plate
- 7 Mounting Plate
- 8 Screw
- 9 Interior Assembly
- 10 Battery Cover

Tips: Specifications are subject to change without prior notice

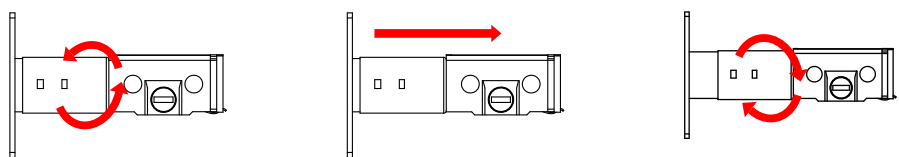
Parts List

Backup Key A	Exterior Assembly B	Latch C	Screws for Latch/Striking Plate D
Striking Plate E	Mounting Plate F	Screws for Mounting Plate and Exterior Assembly G	Interior Assembly H
Battery Cover I	Screws for Interior Assembly J	Reset Tool K	Hole-Aligning Device L (can use or not)

Adjustable Deadbolt Latch Set

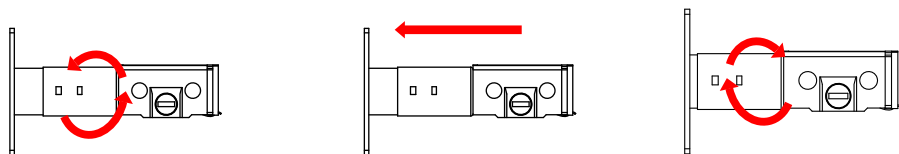
1. TO CONVERT BACKSET FROM 2-3/8" (60mm) TO 2-3/4" (70mm)

a. Rotate the latch in a clockwise direction, then pull out, and twist the extension plate in an anti clockwise direction until hear a lock sound.



2. TO CONVERT BACKSET FROM 2-3/4" (70mm) TO 2-3/8" (60mm)

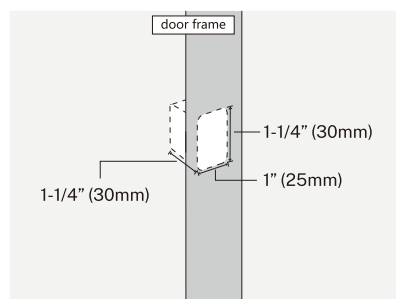
a. Rotate the latch in an clockwise direction, then push in until the end, and twist the extension plate in an anticlockwise direction until hear a lock sound.



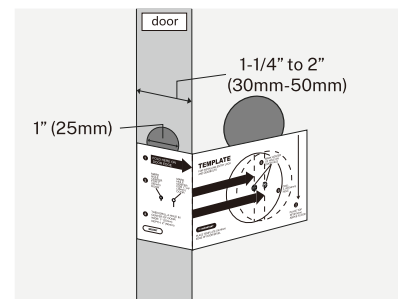
Installation Guide

1 PREPARE THE DOOR AND CHECK DIMENSIONS (with the TEMPLATE card)

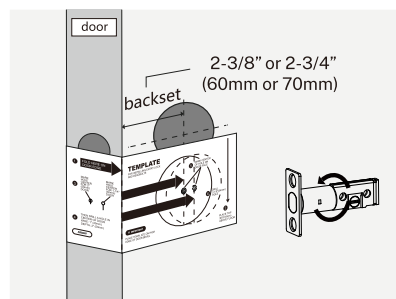
A Measure to confirm the size of hole in the door frame. The wide is 1" (25mm), the length is 1-1/4" (30mm), the depth is 1-1/4" (30mm).



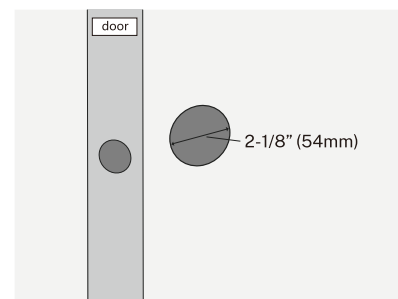
B Measure to confirm the thickness of door is 1-1/4" to 2" (30mm-50mm), the hole in the side of door is 1" (25mm).



C Measure to confirm the backset is 2-3/8" or 2-3/4" (60mm or 70mm). And adjust the length of the latch accordingly.

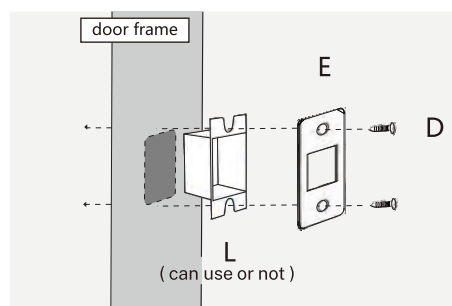


D Measure to confirm the size of hole in the door is 2-1/8" (54mm).

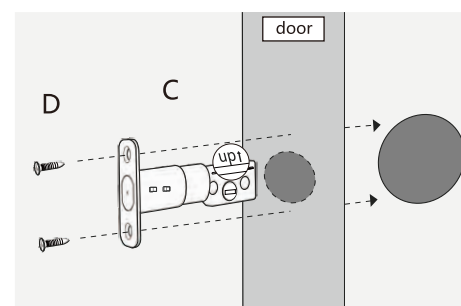


2 INSTALL THE LATCH AND STRIKING PLATE

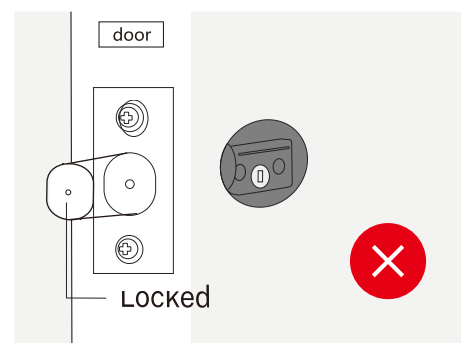
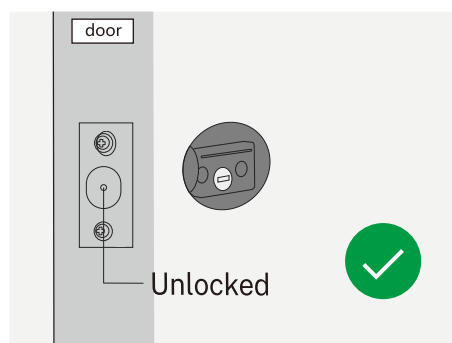
A Install striking plate and hole-aligning device in the door frame with two screws (D) provided.



B Insert latch into hole in side of door with the word "UP" up, and screw latch into door with two screws (D) provided.



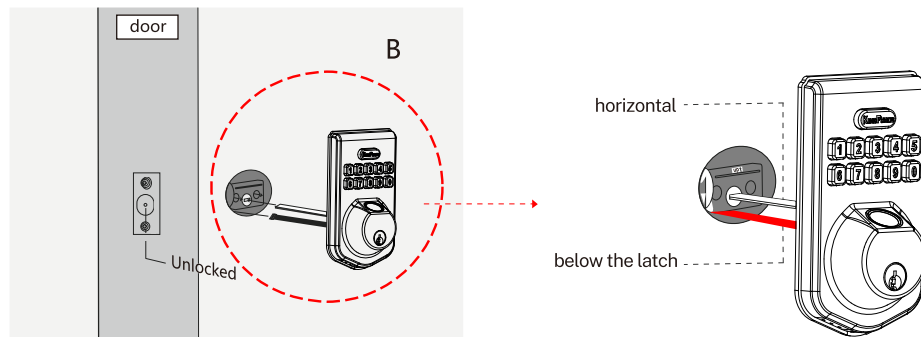
IMPORTANT: Please make sure the latch bolt is fully retracted (in the unlocked position) before installation.



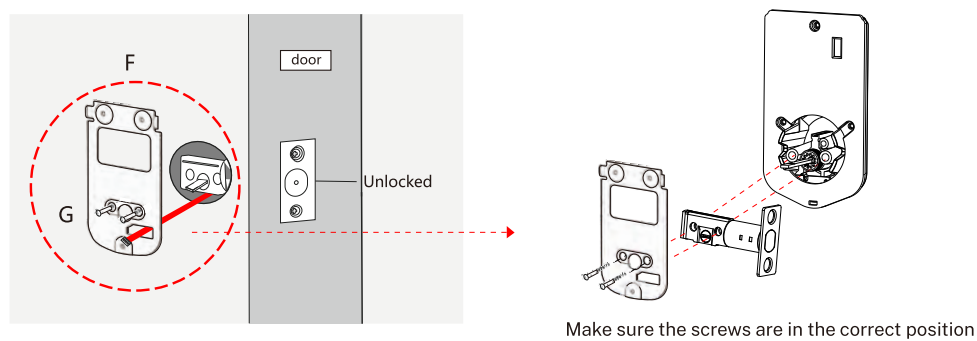
3 INSTALL THE EXTERIOR ASSEMBLY AND MOUNTING PLATE

IMPORTANT: Please make sure the latch bolt is fully retracted (in the unlocked position) before installation.

A Insert torque blade horizontally through slot in the latch, and route the cable below the latch.



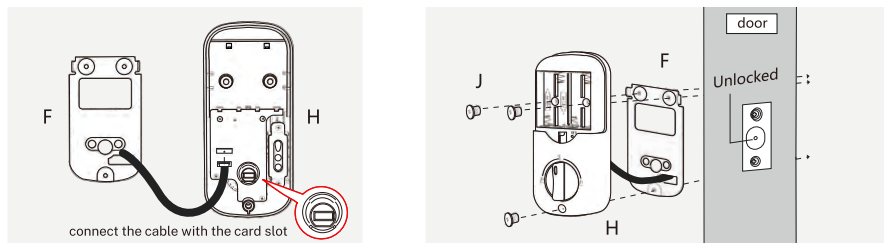
B Install mounting plate with two screws (G) provided.



4 INSTALL THE INTERIOR ASSEMBLY AND BATTERY COVER

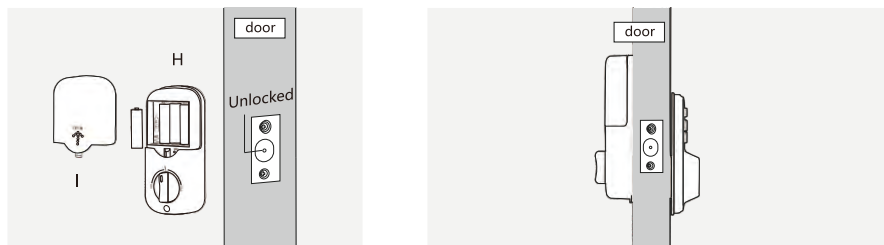
A Connect the cable and ensure connection is tight. Then install interior assembly with three screws (J) provided.

IMPORTANT: Please make sure the knob is in vertical position, and the latch bolt is fully retracted (in the unlocked position) before installation.

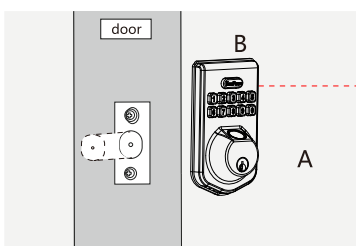


B Load 4 batteries and install the battery cover.

C Finish Installation.



5 DETECT LEFT/RIGHT HAND DOOR INSTALLATION



Click the keypad KingForce, the lock will go into locking position automatically. This is for the smart lock to memorize the orientation of the door.

Note: The default setting for auto lock is disabled. If you want to enable it, please refer to Quick Set Up 4: Set Auto Lock Time Delay.

Factory Default Settings

Settings	Factory Default
Master Code	123456
Auto Lock	Disabled
Silent Mode	Disabled
Wrong Code Entry Limit	10 times
Shutdown Time	30 seconds
Vacation Mode	Disabled

Definitions

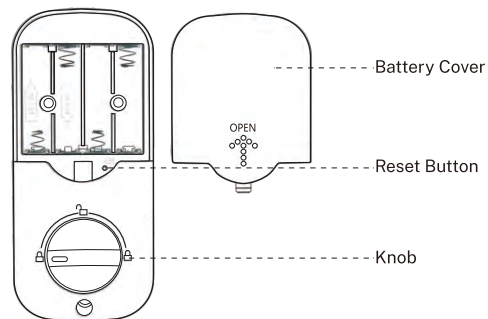
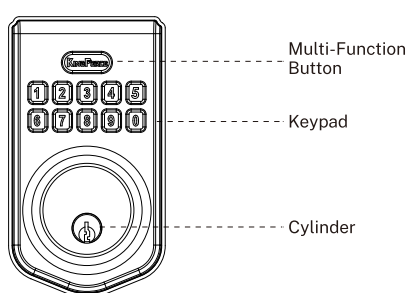
- MASTER CODE**
Required for programming and feature settings. Master code can be used to unlock the door under vacation mode.
△ Property owner/manager should keep this information confidential.
- AUTO LOCK**
The lock will be automatically locked in setting seconds after unlocking if auto lock enabled.
- WRONG ENTRY LIMIT**
After 10 unsuccessful attempts at entering a valid pin code, the unit will shut down for 30 seconds.
- SILENT MODE**
The beep sounds can be muted when pressing keypad. But you will still hear the ale key prompts such as alerts.
- VACATION MODE**
This is a security feature for you when you are leaving your home for vacation or long trip. Enabling vacation mode will restrict all user codes until master code is entered on keypad.

- UNLOCK DIRECTION**
The machine has function of automatically judging unlocking direction. When not in use or reset, unlocking direction is not determined. When pressing key to unlock/lock first time, it will automatically find unlock/lock direction. It will records if successful, then it will be executed based on record.
If its voice failed, it will continue to look for unlocking direction next time. Manually turning knob to unlock/lock will not record unlocking direction. If need to change unlocking direction after recorded, disconnect the power and reconnect it, then successfully unlock/lock one time.
- UNLOCK METHOD**
Enter the password and press the keypad KingForce to unlock. Manually turn the knob to unlock. Press the registered fingerprint to unlock.
- LOCKING METHOD**
Click keypad KingForce to lock. Manually turn the knob to lock. If the auto lock is enabled, the lock will be automatically locked after the set time is over.
- LOW BATTERY ALARM**
When the correct unlock password is entered, the battery power will be automatically detected, if the voltage under below 4.8V(± 0.1), it will voice low power.
- Emergency power supply**
The USB TypeC interface below the front panel can be connected to a mobile power supply for emergency unlocking.

Parts Illustrations

Exterior Assembly

Interior Assembly



△ The default Master Code is 123456.

Programming Instructions

- MASTER CODE** (4 to 10 digits)
The default Master Code is 123456.
- USER CODE** (4 to 10 digits)
a. A total of 20 User Codes and one temporary one-time User Code may be programmed.
b. A total of 100 user fingerprints.

Quick Set Up

△ The default Master Code is 123456.

- Red light flash appear at every wrong and overtime step.
- Long green light means you can go on until succeed.
- While you enter Management mode, you will see all keypads light flash constantly.

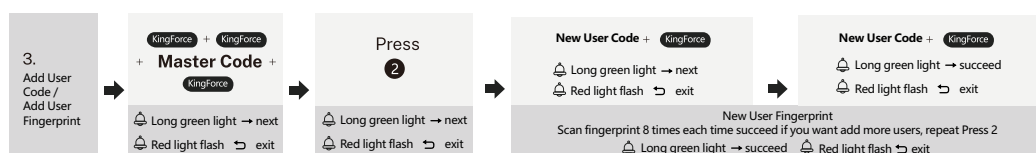
note: KingForce is the Multi-Function button in Exterior Assembly.



△ Note: You will enter Management Mode only in lock state.



△ default master code:123456



△ Note: While Vacation mold enabled, if you use master code to unlock or enter management mode, then Vacation mode will be disabled.



Restore To Factory Default Settings

The default Master Code is 123456

- Open and unlock the door.
- Take out one battery, then press random keypad to consume the rest of power.
- Press the Reset Button with the Reset tool (K), then keep pressing and place the battery back.
- Keep holding the Reset Button until you hear voice succeeded. (if you hear failed, please do it again from step 1)

