

SMART LED BULB

User Manual



Download Surplife App

Download "Surplife" APP from Apple Store and Google Play Store, or scan the QR code.



SURLIFE APP



INSTRUCTION

FAQ

Scan the "Instruction" QR code to read the electronic manual. Or enter the APP "FAQ" to learn more.

Parameters

5 Channels:	RGB+CCT
Lamp Socket:	E26/ E27/ B22
Power& Voltage:	7W 100- 240V, AC 9W/ 15W 100-130V, AC 10W/ 15W 190- 240V, AC
Color Temperature:	2700K-6500K
Working Temperature:	- 20~ 45°C

1

How to connect smart device via WiFi?

1. Open your phone Ble , turn on device.
2. Enter "Surplife" APP, tap "Add Device" or click "+" at the top right corner.
3. Tap the device on the list, then select your WiFi network, enter the pass word , done!

How to connect smart device via Ble ?

1. Open your phone Ble, turn on device.
2. Enter "Surplife" APP, tap "Add Device" or click "+" at the top right corner.
3. Tap the device on the list, then select upper right corner "Ble Local Mode", done!

Tips:

1. WiFi and Ble connection can't be connected simultaneously.
2. Pls reset the device first when you switch the connection method.

How to reset the factory setting?

Turn on and off the bulbs 5 times in a row, not too fast, until the bulbs start to flash, that means reset is completed

2

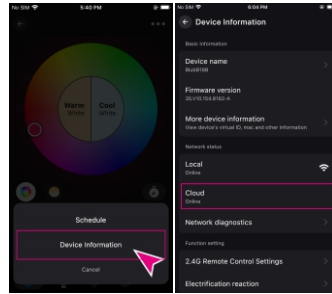
How do I connect to Amazon Alexa?



Tips:

1. Please rename your device in alexa app and make sure there is a device on the list.
2. Check whether the device is " Cloud Online".

Step 1: Click the device icon > tap upper right corner "... " > Device Information > Cloud "online" .

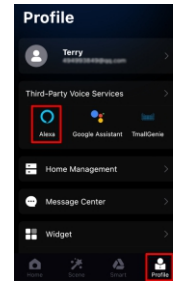


3

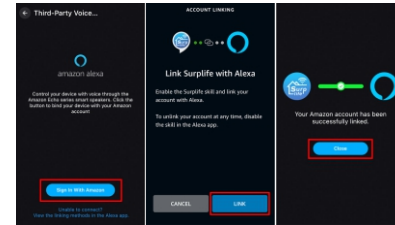
Step 2:

Link with Alexa Directly

1. Enter " Profile" page, then click" Alexa" icon.



2. Enter Login Page, sign in your Amazon Alexa account, then click is "Link Now".



4

Step 3:

Send commands to your Alexa

Supported voice commands :

- Turn on/ off < light name >.
- Dim < light name >.
- Brighten < light name >.
- Set < light name > to [0-100%].
- Turn < light name > to [color].

Supported Color Options:

Blue, Crimson, Cyan, Fuchsia, Gold, Green, Lavender, Lime, Magenta, Orange, Purple, Red, Salmon, Teal, Sky Blue, Turquoise, Violet, Yellow.

For Scenes:

You can activate scenes by following voice commands:

Alexa, activate {scene name}.

Alexa, turn on {scene name}.

Notes:

1. If Alexa can't control your light, please check whether the light is Cloud Online.
2. Please check the device name you are calling is the same as the device in the Alexa app, thank you!

5

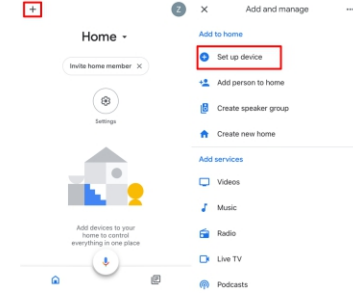
How do I connect to Google Assistant?



Tips:

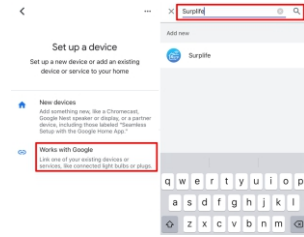
1. Please rename your device in Google Home app and make sure there is a device on the list.
2. Check whether the device "Cloud Online".

Step 1: Enter Google Home App and click on the "+" at the top left corner> set up device.

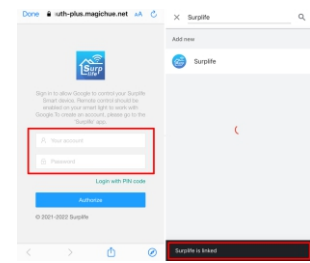


6

Step 2: Click "Work with Google", then enter "Surplife".



Step 3: Login your " Surplife" account.



7

Step 4 : Send commands to your Google, after the app links with Google Home successfully.

Supported voice commands:

- Turn on/off < light name >.
- Dim < light name >.
- Brighten < light name >.
- Set < light name> to [0-100%].
- Turn < light name> to [color].

Supported Color Options:

Blue, Crimson, Cyan, Fuchsia, Gold, Green, Purple, Lime, Magenta, Orange, Red, Salmon, Turquoise, Sky Blue, Teal, Lavender, Violet, Yellow.

For Scenes:

You can activate scenes by following voice commands:

Hey Google, activate {scene name}.

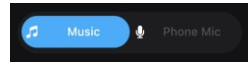
Hey Google, turn on {scene name}.

Notes:

1. If Google Home can't control your light, please check whether the light is Cloud Online.
2. Please check the device name you are calling is the same as the device in the Google Home app, thank you!

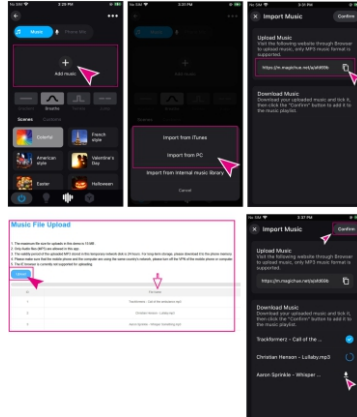
8

Light Colors Sync With Music-IOS



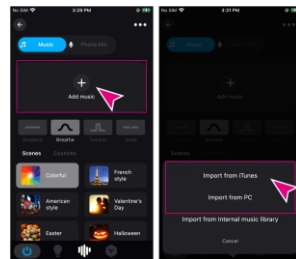
1. For the music files that have been loaded, click "Add music"- **Import from PC**

Step: Copy the link and open the web on PC, then upload your music files, back to the app, tap "Confirm"

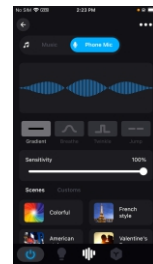


9

2. For the music files that have been loaded, click "Add music"- **Import from iTunes**



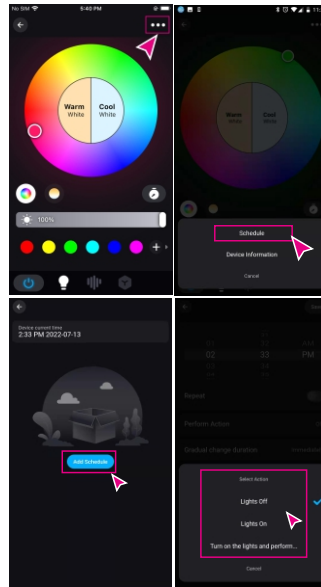
3. For the music files that CAN'T be loaded, click "Phone Mic" page.



10

Create a Schedule

Click the device icon > tap upper right corner "... " > Schedule.

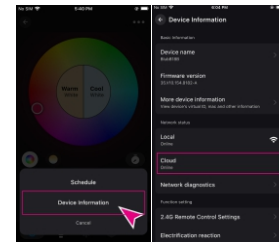


11

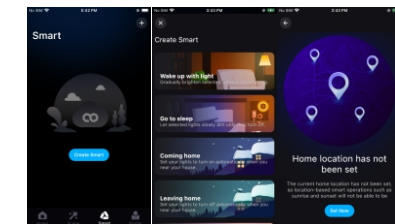
Create a SMART Home

Please make sure your device is "Cloud on line".

Step 1: Click the device icon > tap upper right corner "... " > Device Information > Cloud "on line".

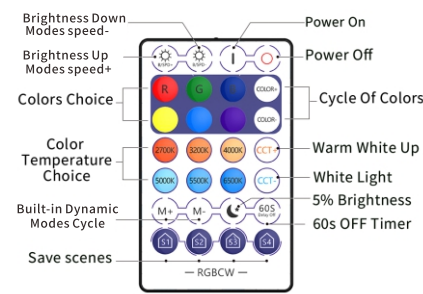


Step 2 : Enter SMART page > Create Smart > Choose a mode you need > Set your Location.



12

2.4G Remote Controller



(Additional purchase required)

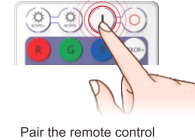
Instruction:

1. Built-in Modes: There are 20 Built-in modes.
2. "CCT+/CCT-" only works under 2700K-6500K.
3. Save scenes: Hold "S1" when the light stay a status until the light flashes then release the key. Like: Lamp1 is warm, lamp2 is pink gradient dynamic mode... then hold "S1" key for a while, now you can display "Scene1" with 1 key.

13

A. Pair the remote control:

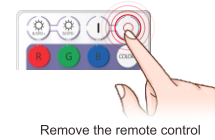
After the lamp is powered on, press the power button for 5 seconds immediately (within 3 seconds). When the lamp flashes slowly for 3 times, it means the pairing is successful.



Pair the remote control

B. Remove the remote control:

After the bulb is powered on, press the power button for 5 seconds immediately (within 3 seconds). When the bulb flashes for 3 times, it means the removing is successful.



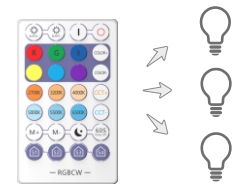
Remove the remote control

① One-to-many control

The remote control can be paired with multiple WiFi bulbs at the same time, and multiple WIFI bulbs can be controlled with one key without limitation.

14

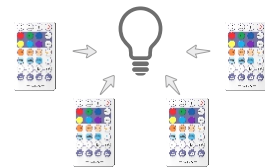
Note: Please refer to the steps of pairing or removing the remote control.



② Many-to-one control

A single WIFI bulb can be paired with multiple remote controls, and each remote control can control the same WIFI bulb separately. (a single bulb can support up to 16 remote controls).

Note: Please refer to the steps of pairing or removing the remote control.



15