

VEIKK



# User Manual

VK1200 PEN DISPLAY

## Precautions

1. Please read this manual carefully before using, and keep it well for future reference.
2. Before cleaning the display, please unplug the USB cable and wipe with a soft damp cloth, and don't use any kind of detergents.
3. Please don't place the display near water sources such as bathtub, washbasin, sinks, washing machine, damp basement, swimming pool, etc.
4. Do not place this display on an unstable surface.
5. Do not step or place heavy objects on this display as this could damage it.
6. Do not place the display a height for children reaching easily in order to avoid danger. Make sure that a child does not put the pen or pen tip in his/her mouth.
7. Do not place the display and digital pen close to the magnetic field.
8. To protect your display, please switch off the power when it is not in use.
9. If the display has a breakdown, do not open the main case and try to repair it by yourself. Please ask for a service for proper repair and maintenance.
10. When the following situations occur, please unplug the power and you may need a service for full repair and maintenance:
  - A. There is liquid splashed inside of the display;
  - B. The display has fallen or the LED is broken;
  - C. When obvious abnormalities occur to the display.

11. While getting the components replaced, you are supposed to guarantee that the repairman is using the substitute components specified by the manufacturer. Unauthorized component replacement might cause fire, electric shocks or other dangers.

# Catalog

<b>1 Product Overview</b>	1
1.1 About VK1200	1
1.2 Product and Accessories	1
1.2.1 Product overview	1
1.2.2 Pen	2
1.2.3 Other accessories	3
1.3 Specifications	4
1.3.1 Display	4
1.3.2 Tablet	4
1.4 Display Connection	5
<b>2 Driver Installation</b>	
2.1 System Requirement	6
2.2 Driver Installation	6
<b>3 Monitor Mapping</b>	8
<b>4 Driver setting</b>	11
4.1 Pen	11
4.1.1 Pen Function Settings	11
4.1.2 Current Pen Pressure	12
4.1.3 Click Sensitivity	12
4.2 Mapping	13
4.2.1 Monitor Setting	13
4.2.2 Rotate	14
4.2.3 Screen Mapping	15
4.2.4 Calibration	15
4.2.5 Enable Windows Ink Function	16
4.3 Functions	17
4.3.1 Shortcut Keys Setting	17
4.4 About Us	21

# 1 Product Overview

## 1.1 About VK1200

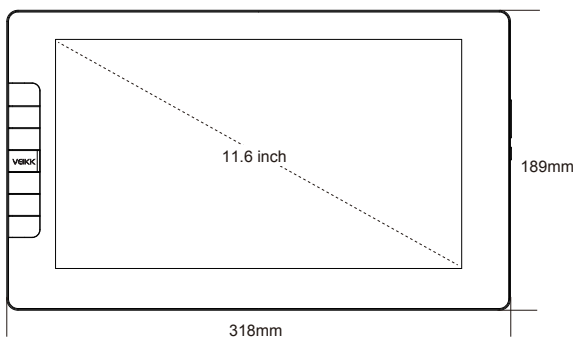
Thanks so much for choosing VEIKK VK1200 Pen Display.

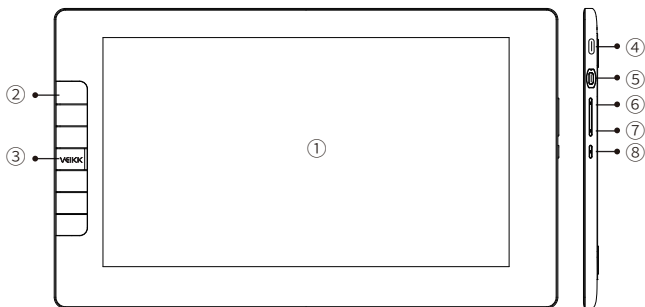
This is a new generation of drawing display, which adopting full-laminated technology, seamlessly combines the glass and the screen, to create a distraction-free working environment. You can naturally draw as you would with the real pen and paper, brings you a real fresh experience.

To give you a better understanding and using of your VK1200 display, please read this user manual carefully. The user manual only shows the information under Windows, unless otherwise specified, this information applies to both Windows and Mac systems.

## 1.2 Product and Accessories

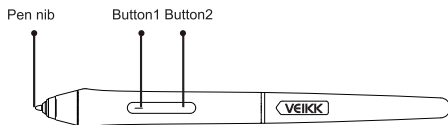
### 1.2.1 Product overview





- |                 |   |
|-----------------|---|
| ① Working Area  | ⑦ Brightness down   |
| ② Shortcut Keys | ⑧ Power button and Status indicator light                         |
| ③ VEIkk Logo    | a. Blue: The VK1200 is connected to your computer and powered on. |
| ④ USB Port      | b. No Light: The VK1200 is powered off.                           |
| ⑤ HDMI Port     |   |
| ⑥ Brightness up |   |

### 1.2.2 Pen



**Note:** Battery-free pen, no need to charge.

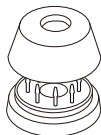
### 1.2.3 Other accessories



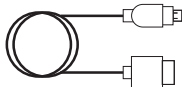
Pen x1



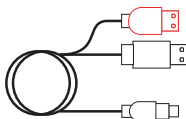
Pen Pocket x1



Pen Holder x1  
(Including 8 pen nibs)



HDMI Cable x1



USB Cable x1



Nib Remover x1



Driver Download  
Reminder x1



Quick Start  
Guide x1

## 1.3 Specifications

### 1.3.1 Display

Item	Specification
Technology	Full-Laminated
Display	IPS
Active Area	11.6 inch(256.32 x144.18mm)
Resolution	1920X1080
Brightness	230 cd/m2
Response Time	25ms
Visual Angle	178° (H) -178° (V)
Support Color	16.7M
Display LED Life	≥20000 hours
Interface	Micro HDMI

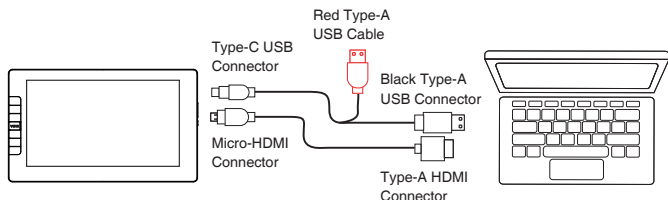
### 1.3.2 Tablet

Item	Specification
Technology	Electromagnetic
Pen	Battery-free
Resolution	5080LPI
Pen Pressure	8192 Levels
Accuracy	±0.25mm
Keys	6 shortcut keys
Reading Height	10mm
Interface	Type-c USB

## 1.4 Display Connection

Connect the pen display to your computer with the USB cable and HDMI cable.

1. Plug Micro-HDMI connector into VK1200, then connect Type-A HDMI connector into computer.
2. Plug the Type-C USB connector into VK1200, then connect the black Type-A USB connector into computer.



### Note:

1. Generally the device can be powered on when the black USB-A connector is connected to your computer. A flashing screen of the device may indicate a low battery, in which case, you are suggested connect the red colored USB-A cable to another USB interface on your computer or the power adaptor. The power adaptor is not included in the package. Power adaptor of your mobile phone is also compatible.
2. If connected properly, the VK1200 display will start up successfully once you press the power button.

## 2 Driver Installation

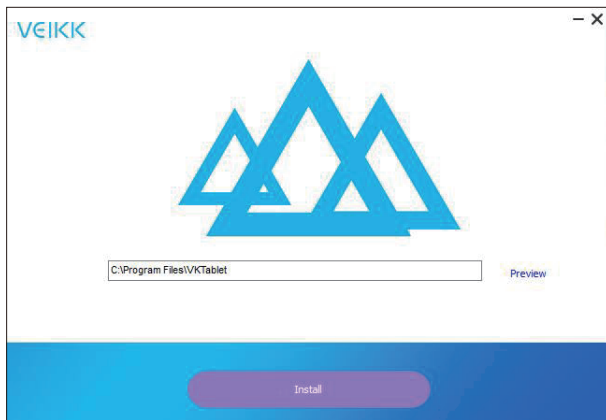
### 2.1 System Requirement


Windows 10/8/7/(32/64 bits)  
Linux OS / Chrome 88 or later

Mac OS 10.12 or later

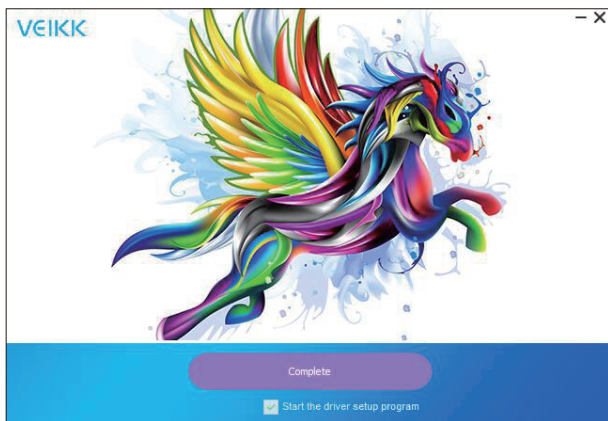
### 2.2 Driver Installation

1. Before installing VEIKK driver, please uninstall all tablet drivers from your computer completely.
2. Disable all antivirus program or firewall, keep all drawing softwares closed.
3. Connect VK1200 to your computer.
4. Please download VEIKK driver from our official website: [www.veikk.com](http://www.veikk.com)
5. Click “VK Tablet Driver.exe” and follow the prompts to install. If Mac system, please open it with default installer.

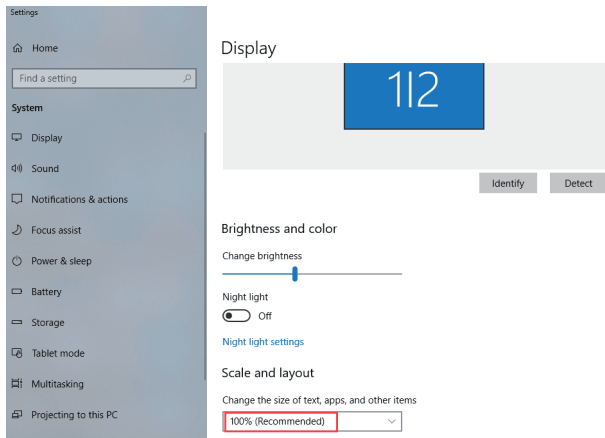


6. Once the driver is completely installed, you will see an icon  appearing on the system tray (lower right corner) and the desktop (Windows) and system Preference (Mac).
7. After a successful installation, the digital pen should be able to control the cursor, and activated for configuration on the pressure test area.

**Note:** If your computer operating system is the new system **Mojave (10.14)** or **Catalina (10.15)**, please add the “Tablet Driver Center” into the white list first after installing the driver on your computer. Please refer to the website's FAQ for more details.



8. Right click your computer desktop and choose “Display Setting”---  
“Set monitor’s “---“Size to text,app and other items” to 100%.



### 3 Monitor Mapping

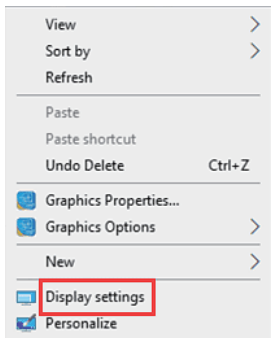
On the display setting, you can see your monitors to “Extend these display” or “Duplicate these displays”.

#### How to Change to Extended Display.

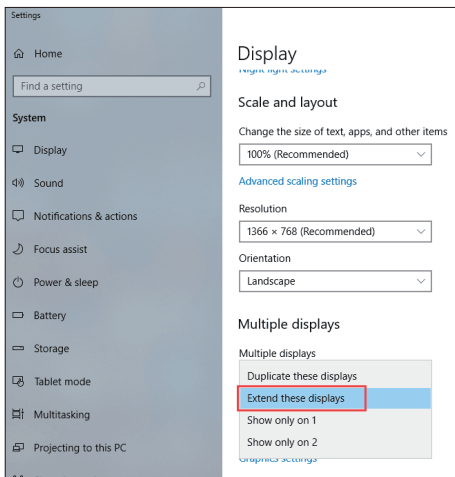
Extended Display means you work with a larger Windows desktop area spanning your computer monitor and VK1200 Display. Applications can be moved from one display to the other, and will allow you to work in different screen resolutions.

## Windows:

1. Right-click your desktop and select "Display Setting".

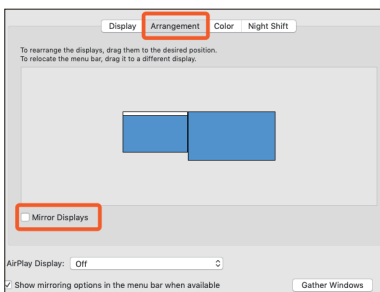
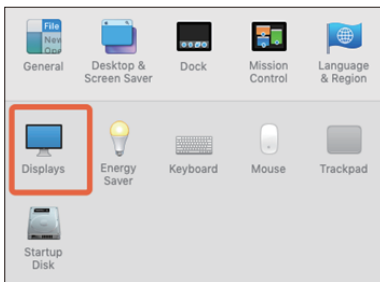



2. In Multiple Displays dropdown, change to **[Extend these Displays]**.



## Mac:

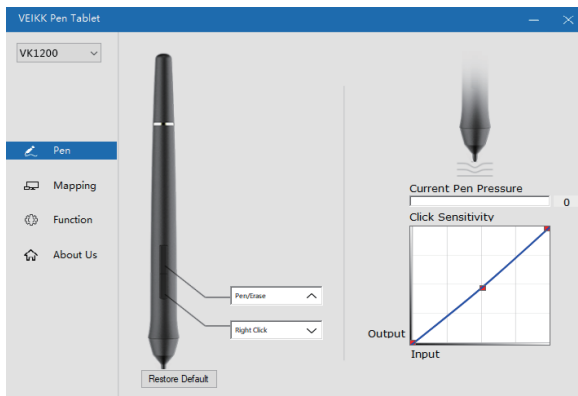
1. Please open “System Preferences---“Displays”---“Arrangement”, don’t choose the “Mirror Displays”.



2. If your computer is equipped with more than one monitor, your VK1200 pen display will map to the monitors based on how they are configured in the DISPLAY PROPERTIES control panel.
3. After you have correctly configured your computer for multiple monitors, then you can adjust your VK1200 pen display mapping by opening the driver icon  and changing the appropriate options. This enables you to toggle the current VK1200 mapping and screen cursor between the system desktop or primary display and your other monitors.

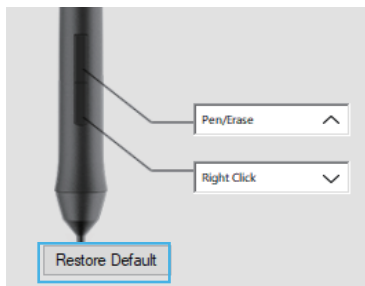
## 4 Driver setting

### 4.1 Pen



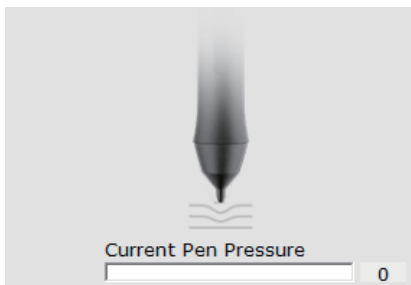
#### 4.1.1 Pen Function Settings

You may customize the functions of pen buttons. Use the “Pen” option to program custom keystrokes.



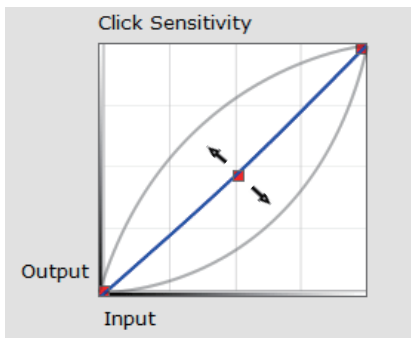
### 4.1.2 Current Pen Pressure

Current Pen Pressure shows the current pressure level being exerted on your tablet and can be used to test pen pressure.



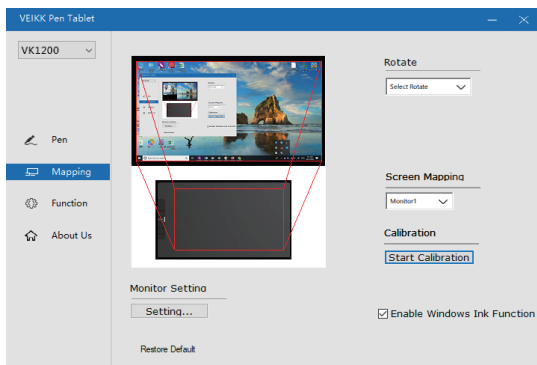
### 4.1.3 Click Sensitivity

You can adjust pen pressure to “Output” or “Input” sensitivity on here.



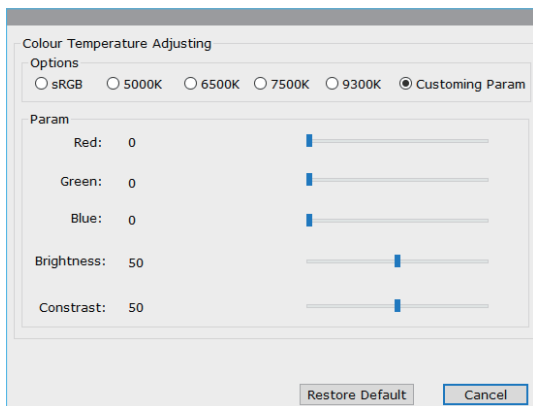
## 4.2 Mapping

Define the display area that will be mapped to the computer screen area.



### 4.2.1 Monitor Setting

Here you can adjust the monitor color temperature and parameter.

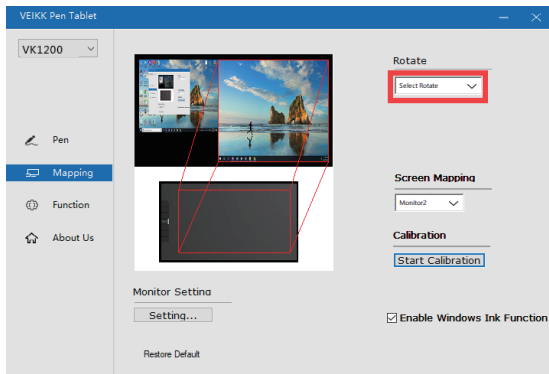


### 4.2.2 Rotate

It can freely rotate the pen display, and satisfy left hand users .

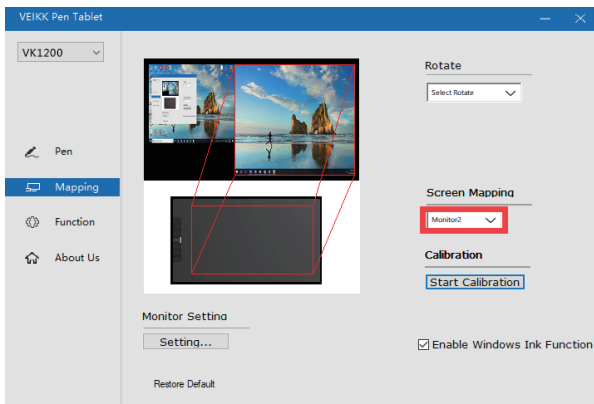
**Note:**

- When you set the rotate function, you must also rotate your VK1200.
- Before setting the rotate function, you have to set your computer to "Extend These Display".



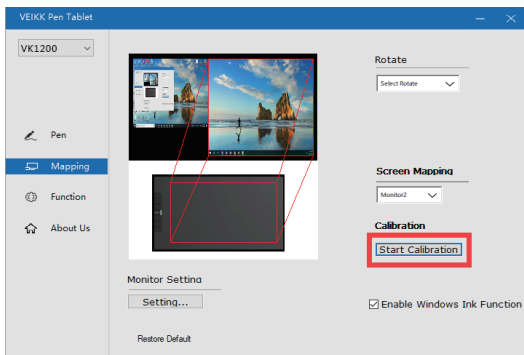
## 4.2.3 Screen Mapping

If working in Extended Display, choose which monitor the VK1200 pen display to track with. To learn which monitor is Monitor 1 and which is Monitor 2, Please go to Start > Settings > Display and click Identify.



## 4.2.4 Calibration

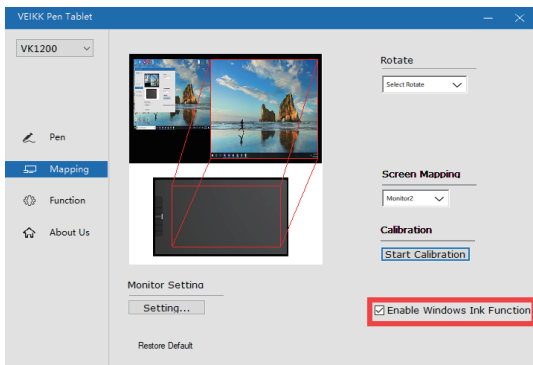
Click "Start Calibration" to activate the calibration screen. Press the crosses appearing on the screen one by one with the pen to calibrate the screen.



**Note:** Before calibration, you have to set your computer to "Extend These Display" firstly.

#### 4.2.5 Enable Windows Ink Function

Microsoft Windows provides extensive support for pen input. Pen features are supported in such as Microsoft Office, Adobe Photoshop, AI and so on.



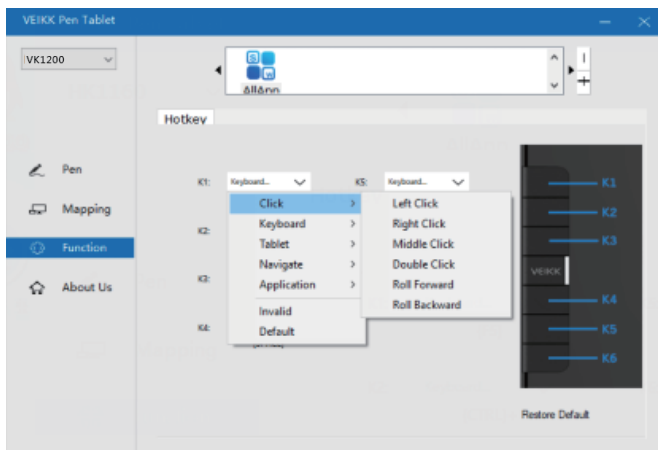
## 4.3 Functions

### 4.3.1 Shortcut Keys Setting

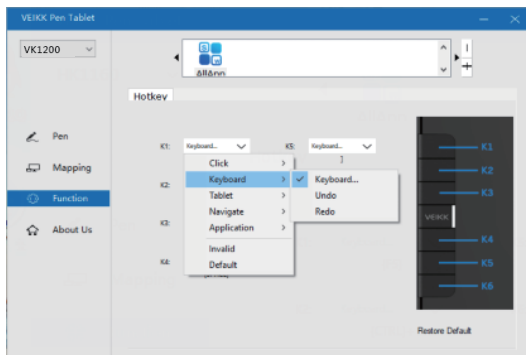
**Note:**

- a. The VK1200's shortcut keys are designed to work with US English. Keys may not function correctly with the other keyboard languages.
- b. By Default, the VK1200 express keys are mapped to standard Photoshop keyboard shortcuts. Keys can be customized to function efficiently in other software.
- c. Most creative software will not accept keystroke inputs when the pen is in use. To avoid invalid keystroke actions, hold the pen away from the screen before pressing your touchkey.

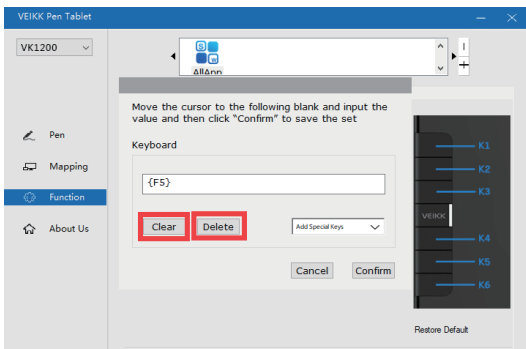
1. Set the keys features directly in the driver interface (Click, Tablet, Navigate, Application, Invalid, Default) Click the “>” to find more specific features.



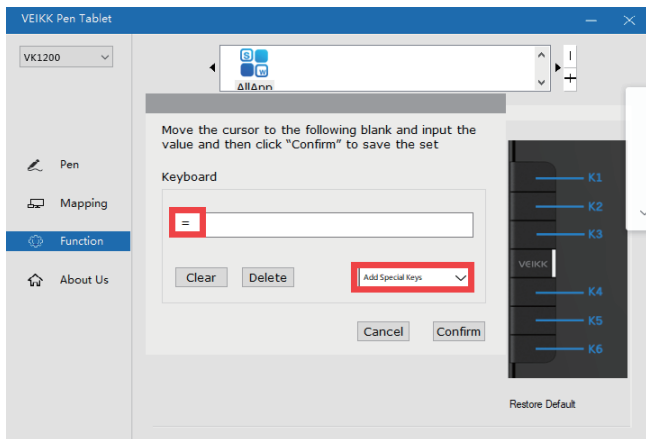
2. Set the keys features by computer keyboard input Choose “keyboard”.



Delete the default features and input the features you prefer by your computer keyboard.

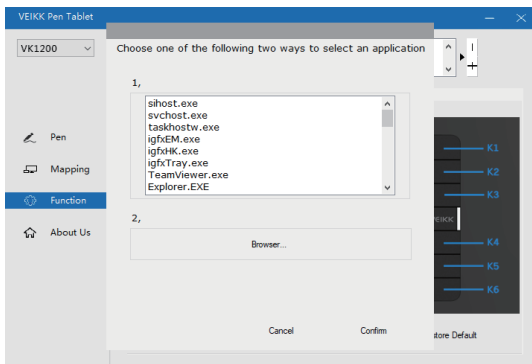


Input special characters from your computer keyboard.

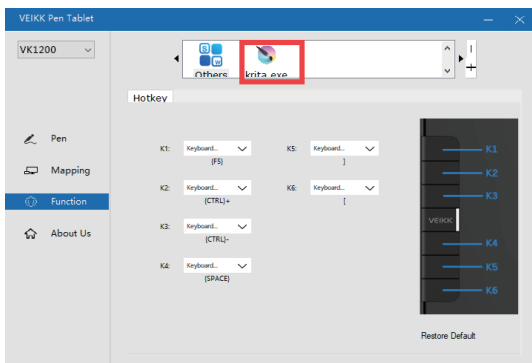


## You can set each shortcut key for different software

a. Click the "+" button go to select program tab.

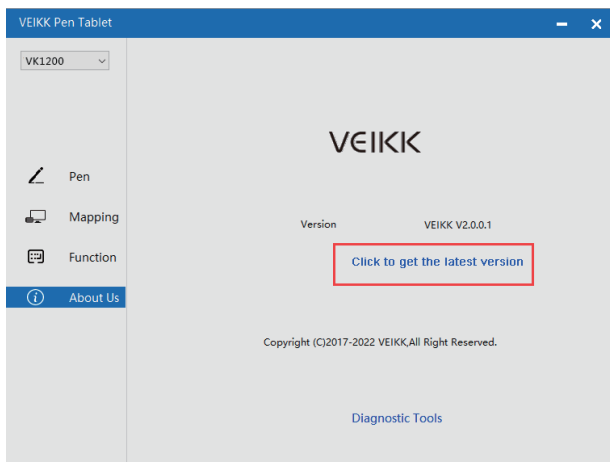


- b. You can choose Default or use Browse to select your choice of software.
- c. Return the shortcut key setting tab, click the tablet icon, and then customize the shortcut keys.

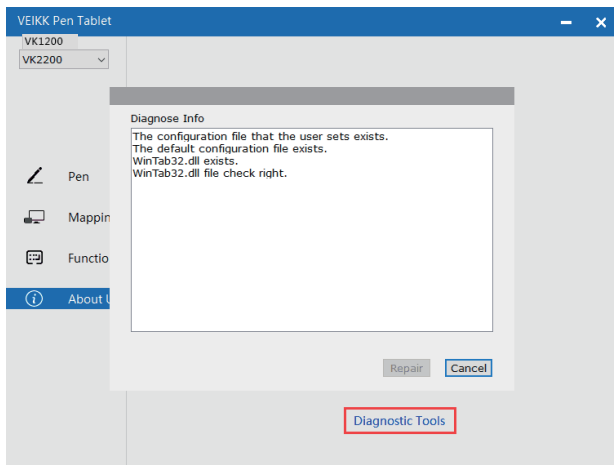


## 4.4 About Us

Click to get the latest version: If you want to install the latest driver, click “Click to get the latest version”, if there is no response, that means the driver you installed is the newest. If you find newest driver in the list, you just need to update.



Diagnostic Tools: Check for missing key files.



## Mac:

**Note:** Driver settings in Mac system are the same as in Windows system. Users who use Mac system can refer to Windows system.

# VEIKK

Any question, please contact us

---

**Beijing Veikk E-commerce Co., Ltd.**

Email : [service@veikk.com](mailto:service@veikk.com)

Skype : [veikk service](#)

Website : [www.veikk.com](http://www.veikk.com)