

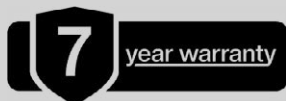


1BOX C2030

HIGH POWERED LED DOWNLIGHT

The 1BOX-C2030 LED Downlight features an incredible six high powered downlight options in one fitting, truly living up to the 1BOX name. Choose between three output colours (white, neutral white and warm white) and select between 20W and 30W power modes (selectable with a switch on the dimmable driver).

Simply select the desired colour output on the driver or choose Auto mode. When auto mode is selected, just flick the standard wall switch to change between the three colour outputs. The built-in memory will save the selected colour for the next use.



TECHNICAL INFORMATION

	ML-1BOX-C2030
Total Power	24W* 34W*
Lumen Output	24W: WW 2514lm NW 2785lm W 2533lm 34W: WW 3251lm NW 3663lm W 3268lm
Efficacy	97 - 121lm/W
Colour Temperature	WW 3000K NW 4000K W 6000K
IP Rating	IP20 Back IP54 Front
CRI	80+
Beam Angle	96°
Dimmable	Yes, Trailing
Power Supply	ML-1BOX-C2030-DV2 (Constant current)
Frequency	50/60Hz
Input Voltage	200-265V
Output Voltage	30-40V
Input Current	0.13A / 0.19A
Output Current	610/840mA
Average Life	50,000hrs***
Operating Temperature	-10°C to +25°C
Compliance	AS/NZS 60598.2.2:2016 Driver: AS 61347.2.13:2018
Dimensions	Ø 228mm Depth 76mm Cut-out 185mm
Weight	2.1kg
Kit Includes	1x LED Downlight, 1x Dimmable Driver with Flex & Plug

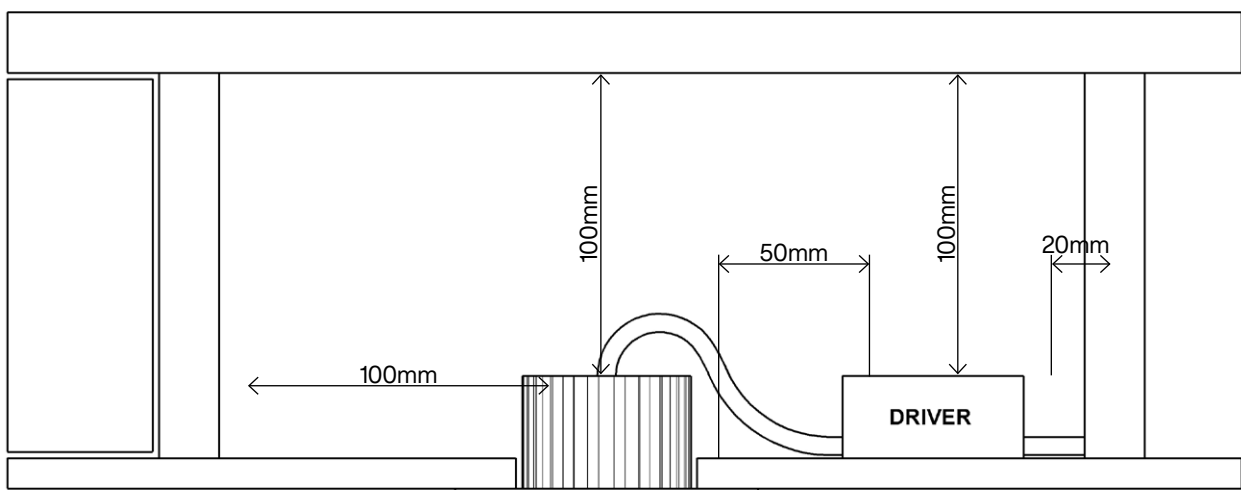
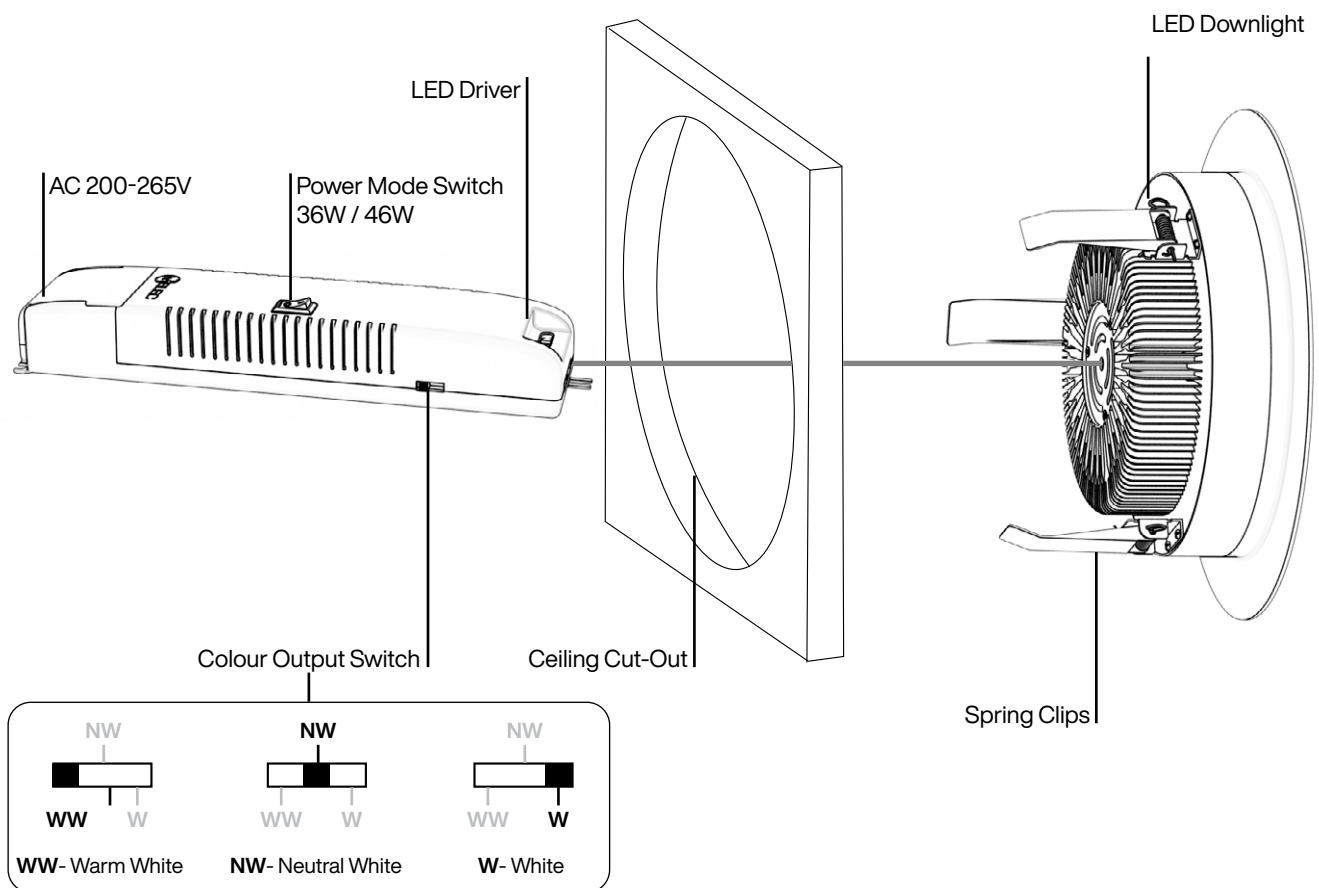
* Total power consumed including driver

** Lumen output may vary upon installation environment

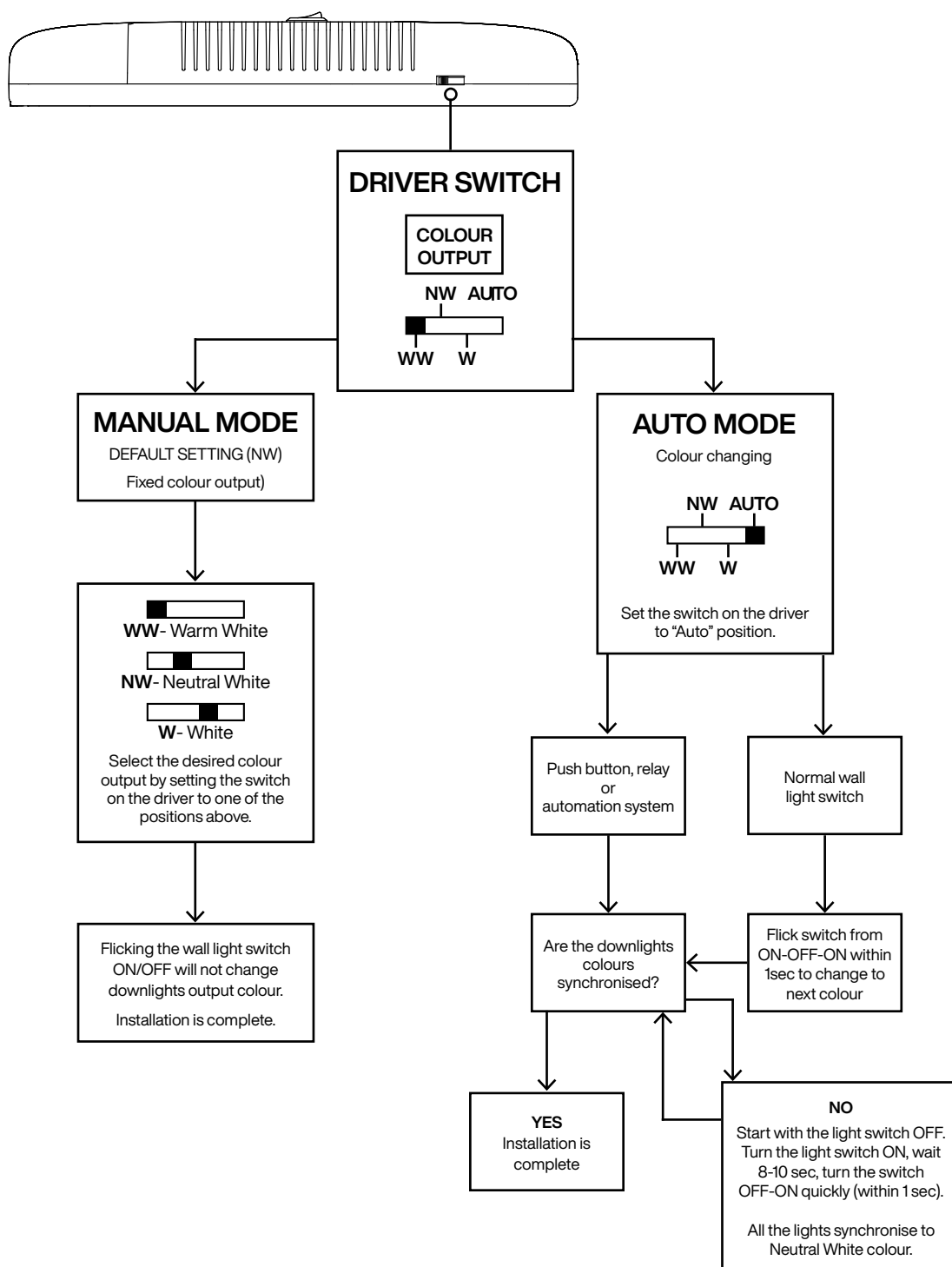
*** Average life is calculated on expected average lifespan

INSTALLATION GUIDE

1. Disconnect mains before proceeding.
2. Remove existing downlight and disconnect old transformer OR mark and cut out 185mm hole in ceiling.
3. Wire up new LED power supply in accordance with marked terminals.
4. Set the switch on the driver to 20W / 30W power mode (refer to Power Mode Switch).
5. Set the switch on the side of the driver to desired colour setting (refer to Colour Output Switch).
6. Plug-in high powered downlight to the connector from the power supply.
7. TEST to ensure all downlights are producing same output colour if in AUTO mode. If not, follow the "Master Reset" steps on the next page.
8. Carefully bend spring clips upwards and install new LED downlight.



DRIVER FACTORY SET



MASTER RESET

If any of the 1BOX-C2030 downlights are out of synchronisation when on "AUTO" mode (are in different colour output than the rest), please follow the steps below.

1. Start with the light switch OFF.
2. Turn the light switch ON, wait 8-10 sec, then turn the switch OFF-ON quickly (within 1 sec).
3. All the lights synchronise to Neutral White colour.

ADDITIONAL INFORMATION

HCB = MIC = SCB = SCI = 0mm

Building insulation may abut the sides of the luminaire

HCB – Height clearance to building element

Minimum distance as specified by the luminaire manufacturer between the top of the recessed luminaire and any building element above it.

MIC – Minimum insulation clearance

Minimum distance as specified by the luminaire manufacturer between the top of any building insulation and the building element above it.

SCB – Side clearance to building element

Minimum distance between the side of the recessed luminaire and any building element as specified in AS/NZS 3000 or as specified by the luminaire manufacturer.

SCI – Side clearance to insulation

Minimum distance as specified by the luminaire manufacturer between the recessed luminaire and any building insulation.

Type Y attachments: if the external flexible cable or cord of this luminaire is damaged, it shall be exclusively replaced by the manufacturer or his service agent or a similar qualified person in order to avoid a hazard.

Non-user replaceable light sources: The light source contained in this luminaire shall only be replaced by the manufacturer or his service agent or a similar qualified person.

PLEASE NOTE

- MUST BE INSTALLED BY LICENSED ELECTRICIAN
- Do not extend low voltage cables from the output of power supply
- All components must not be mechanically stressed
- Be careful not to damage or destroy conductive paths on the circuit board
- Follow all relevant electrical and safety standards (including AS3000)
- Correct electrical polarity must be observed as the wrong polarity may destroy the product and is not covered under warranty
- Damage by corrosion will not be honoured as a material defect claim. It is the user's responsibility to provide suitable protection against corrosive agents such as moisture, condensation and other harmful elements.
- For further information including photometrics & dimming range, please visit www.melec.com.au
- Type Y attachments: if the external flexible cable or cord of this luminaire is damaged, it shall be exclusively replaced by the manufacturer or his service agent or a similar qualified person in order to avoid a hazard.



At **M-Elec** our goal is to not to just supply electricians with the best products but the best services as well. Be part of the electrical community today.

Register for free now
sparkysunited.com.au/osw-claim

Free onsite warranty for 3 years.
Includes labour & hire.
In conjunction with your standard product warranty.

We've got your back!

