

SIRIUS REMOTES

TIMER



TIMER & DIMMER



FUNCTIONS

Turn ON/OFF your product

Use the TIMER function to automatically turn the product ON/OFF at the same time every day.

Use the DIMMER function to choose between 3 luminosities of light.

SIRIUS

INSTRUCTIONS

USING THE SIRIUS REMOTE

Turn your product ON/OFF – the on-button on the product must be activated for the remote to work.

- 1) Choose how many hours you want the product to be turned on by pressing the timer button according to your choice *
- 2) Choose the luminosity of the light by pressing the dimmer button. Keep pressing the button to change the strength of the light. (Full/medium/low)
- 3) If you want to reset the timer or dimmer function, simply turn your product off by using the on/off button on the remote or on the product.
- 4) Please note that when using the remote timer function the working time on your product will decrease slightly due to the battery being on standby.

* If you turn on your product at Five o'clock using the remote, the product will automatically turn on at the same time next day.

SIRIUS

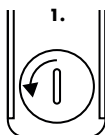
Remote CONTROL

Quick Manual to the Sirius Remote

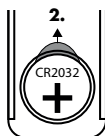
SIRIUS
SHINING MOMENTS



How to remove
battery isolation
plastic tab
before use



Turn to unlock
and remove
the lid.



Pull and
remove
the plastic tab.

SIRIUS

CHANGING THE BATTERY

- 1) Open the battery lid by turning the lid to the left. Using a coin or a coin-shaped object will help to open the lid.
- 2) Insert 1 pcs. CR2032 battery.
- 3) Put the lid back on and tighten it by turning it to the right.

WARRANTY

Sirius provides a limited warranty in accordance with national legislation. For products identified as having a limited lifetime, the warranty is correspondingly limited. SIRIUS will only accept claims filed within the period of limited warranty. The consumer should note the date of purchase and save the receipt as valid warranty from that date. All warranty repairs must be made by a dealer authorized by Sirius. The warranty does not apply if failures occur due to external injuries, abuse, misuse, careless handling, incomplete or improper installation/mounting.

www.sirius.dk